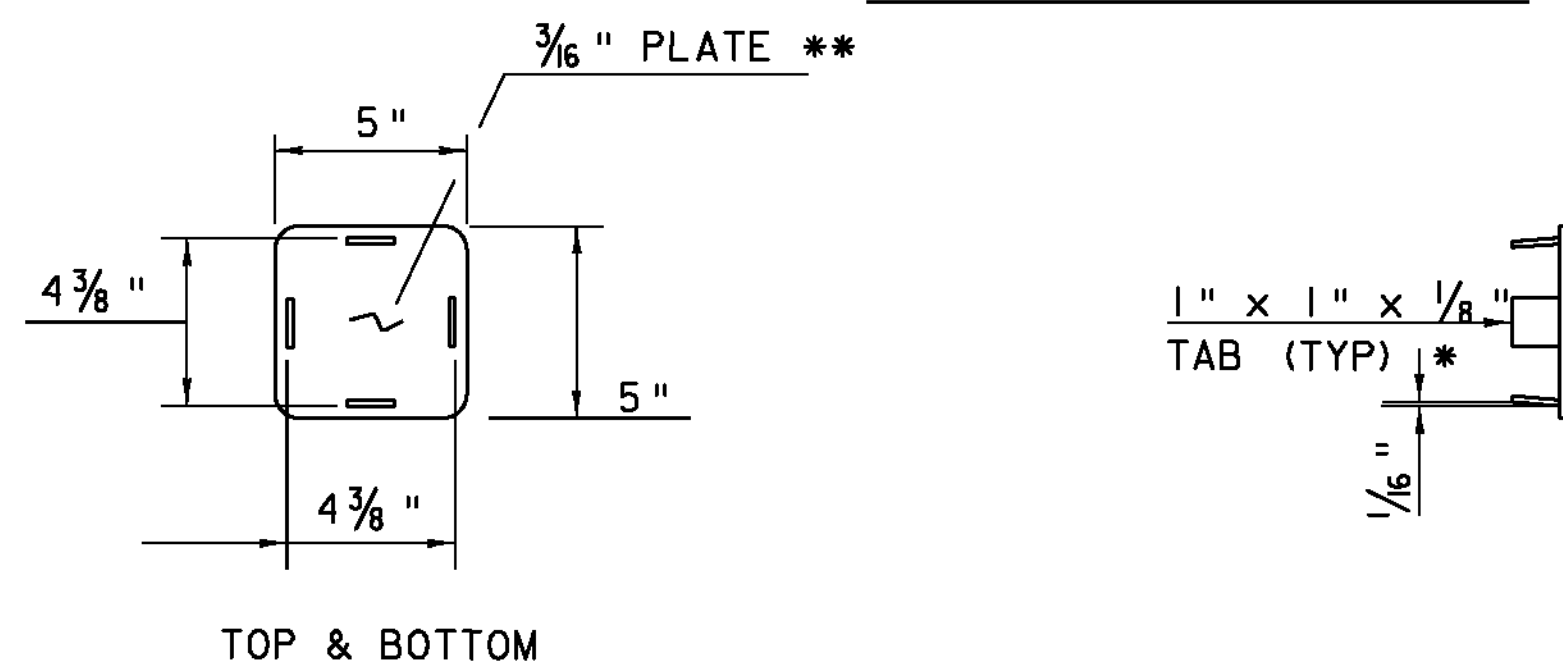


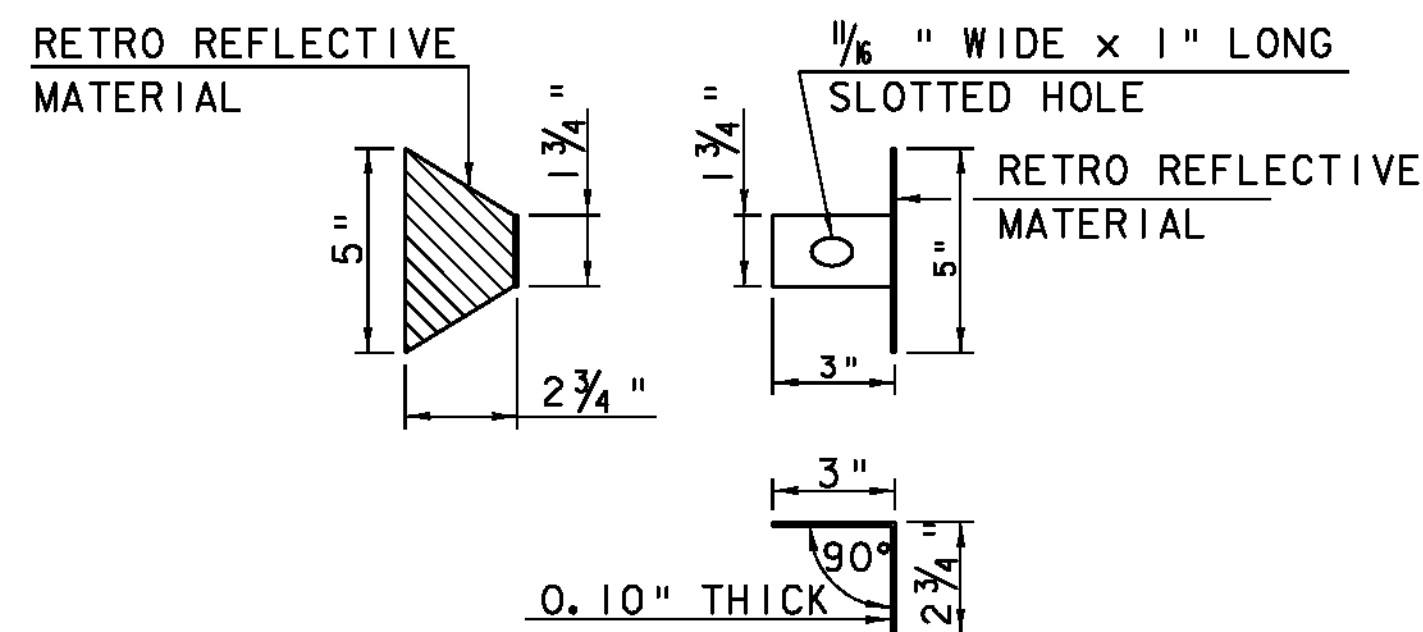
RAILING ELEVATION



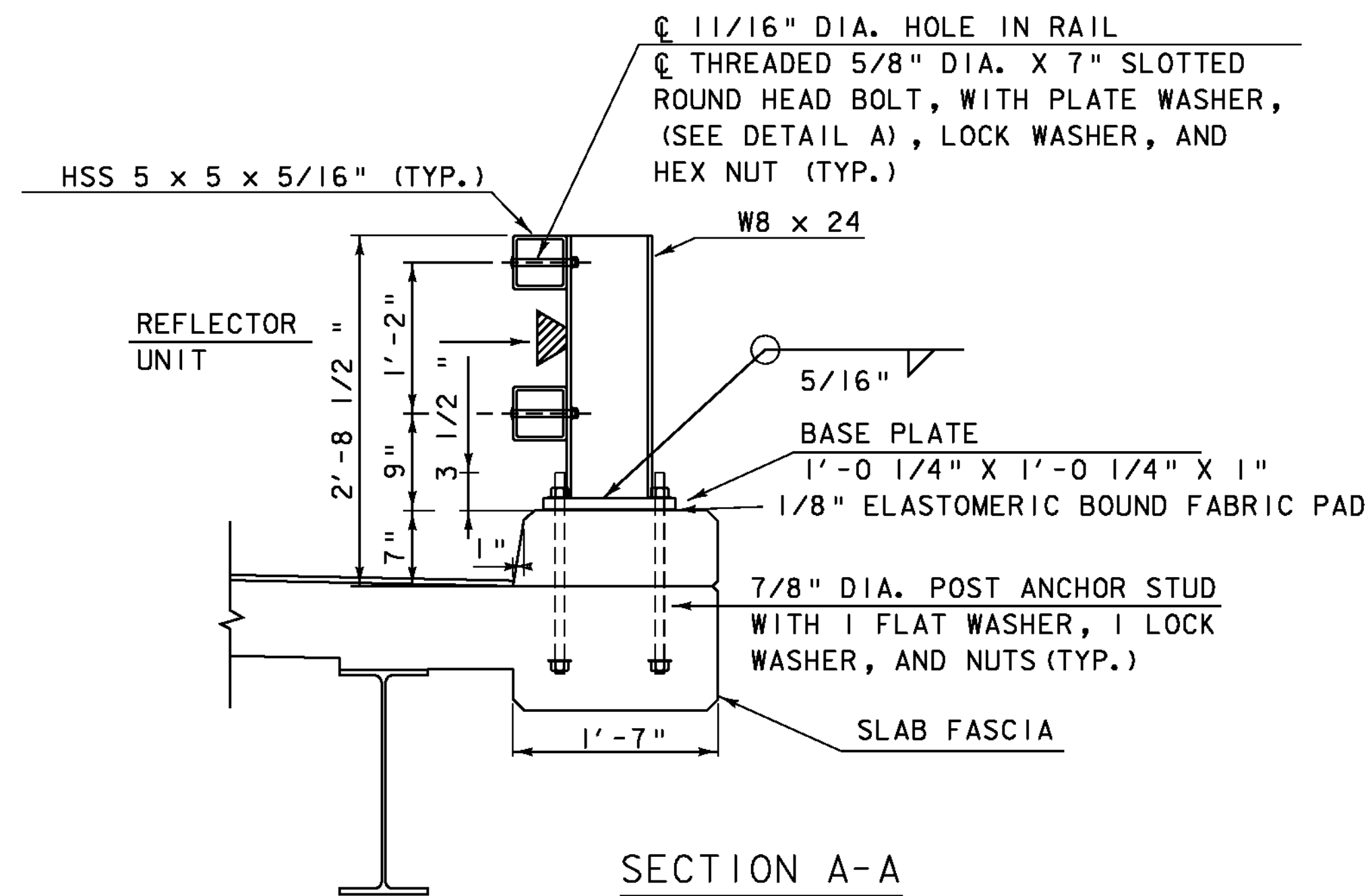
TOP & BOTTOM

END CAP DETAIL

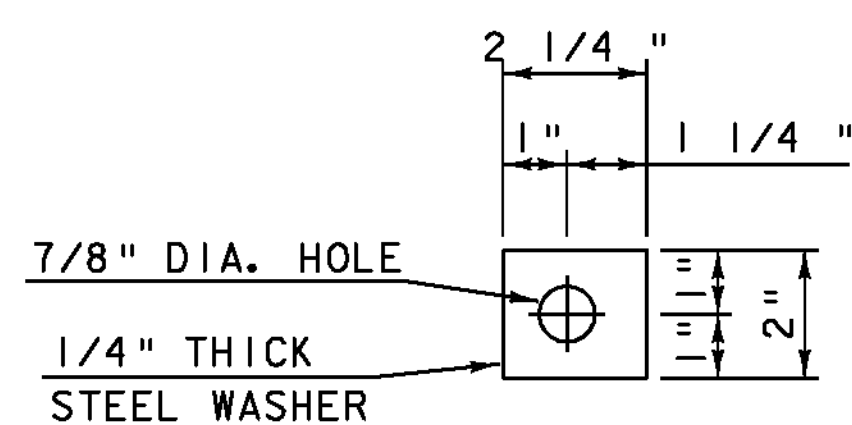
- * WELD TABS TO END CAP PLATE IN TAPERED POSITION SO CAP CAN BE JAMMED INTO END OF RAIL TUBE.
- ** ROUND CORNERS 1/2" RADIUS (TYP)



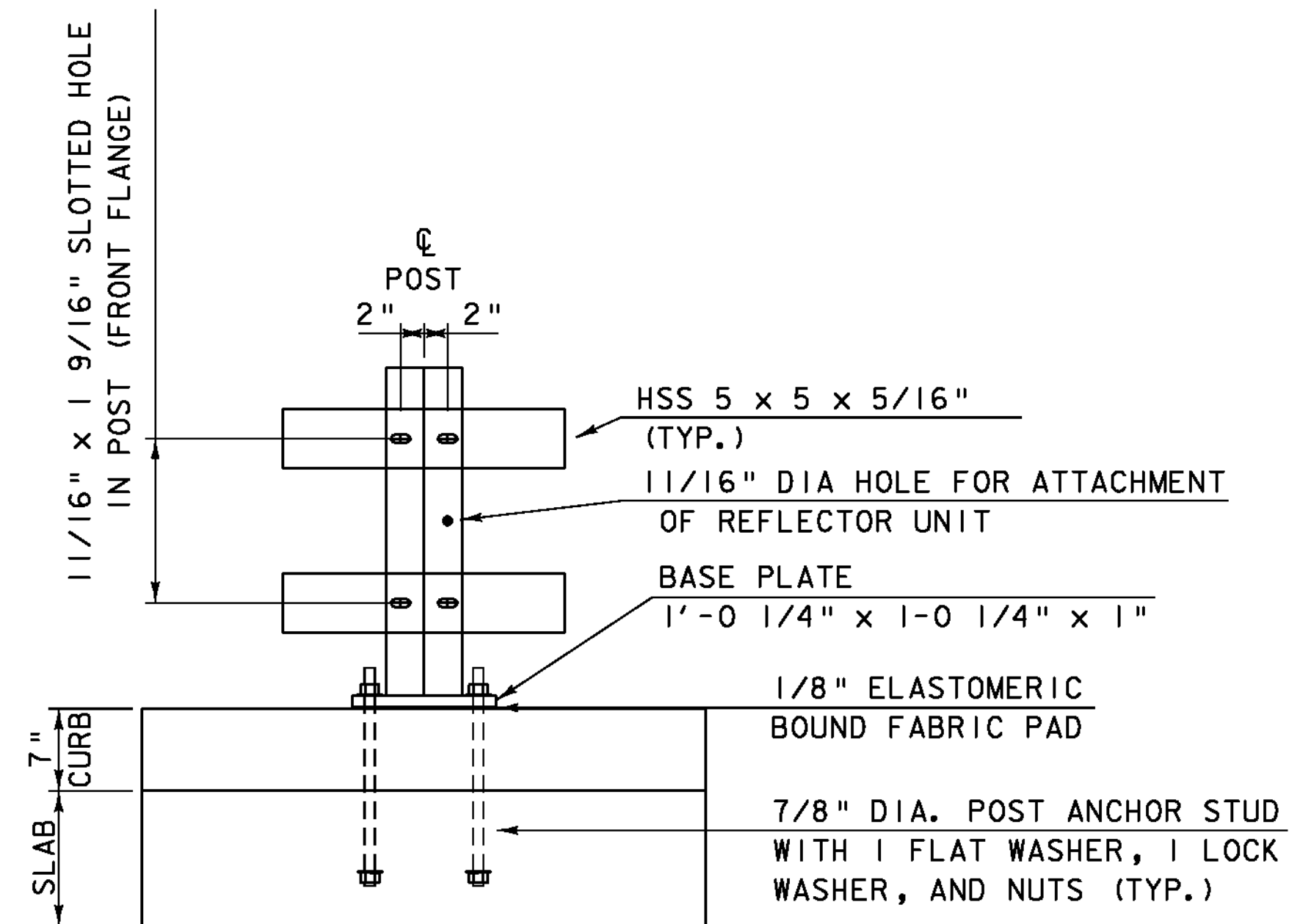
DELINEATION DEVICE DETAILS



SECTION A-A



DETAIL A



POST ELEVATION

NOTES:

1. ALL WORK AND MATERIALS SHALL CONFORM TO SECTION 525.
2. RAILING MATERIAL SHALL MEET THE REQUIREMENTS OF SECTION 732.
3. ALL EXPOSED CUT OR SHEARED EDGES SHALL BE ROUNDED TO A 1/16" RADIUS AND BE FREE OF BURRS.
4. RAIL POSTS SHALL BE SET NORMAL TO GRADE.
5. SECTIONS OF RAIL TUBE SHALL BE ATTACHED TO A MINIMUM OF TWO BRIDGE RAIL POSTS AND PREFERABLY TO AT LEAST FOUR POSTS.
6. RAIL POSTS ANCHORING NUTS SHALL BE TIGHTENED TO A SNUG FIT AND GIVEN AN ADDITIONAL ONE-EIGHTH TURN.
7. RAIL TUBES SHALL BE ATTACHED USING ASTM A 449 (TYPE 1) ROUND HEAD BOLTS INSERTED THROUGH THE FACE OF THE TUBE,
8. HOLES IN RAILS FOR RAIL TUBE ATTACHMENT MAY BE FIELD-DRILLED. HOLES SHALL BE COATED WITH AN APPROVED ZINC-RICH PAINT PRIOR TO ERECTION.
9. ANY BENDING OF RAIL SHALL BE DONE AT A FABRICATION PLANT, ACCORDING TO A PROCEDURE PROVIDED BY THE FABRICATOR.
10. THE FABRICATOR SHALL SUBMIT FABRICATION DRAWINGS INCLUDING WELDING PROCEDURES IN ACCORDANCE WITH SECTION 105.
11. 1/8" PAD SHALL COMPLY WITH STANDARD SPECIFICATION SUBSECTION 731.01 OR 731.02.

PROJECT NAME: BRIDGEWATER
PROJECT NUMBER: BRS 0149(4)

FILE NAME: s86e062raildet.dgn PLOT DATE: 31-DEC-2009
PROJECT LEADER: K. HIGGINS DRAWN BY: G. LAROCHE
DESIGNED BY: G. LAROCHE CHECKED BY: T. FILLBACH
RAIL DETAIL #1 SHEET 40 OF 58