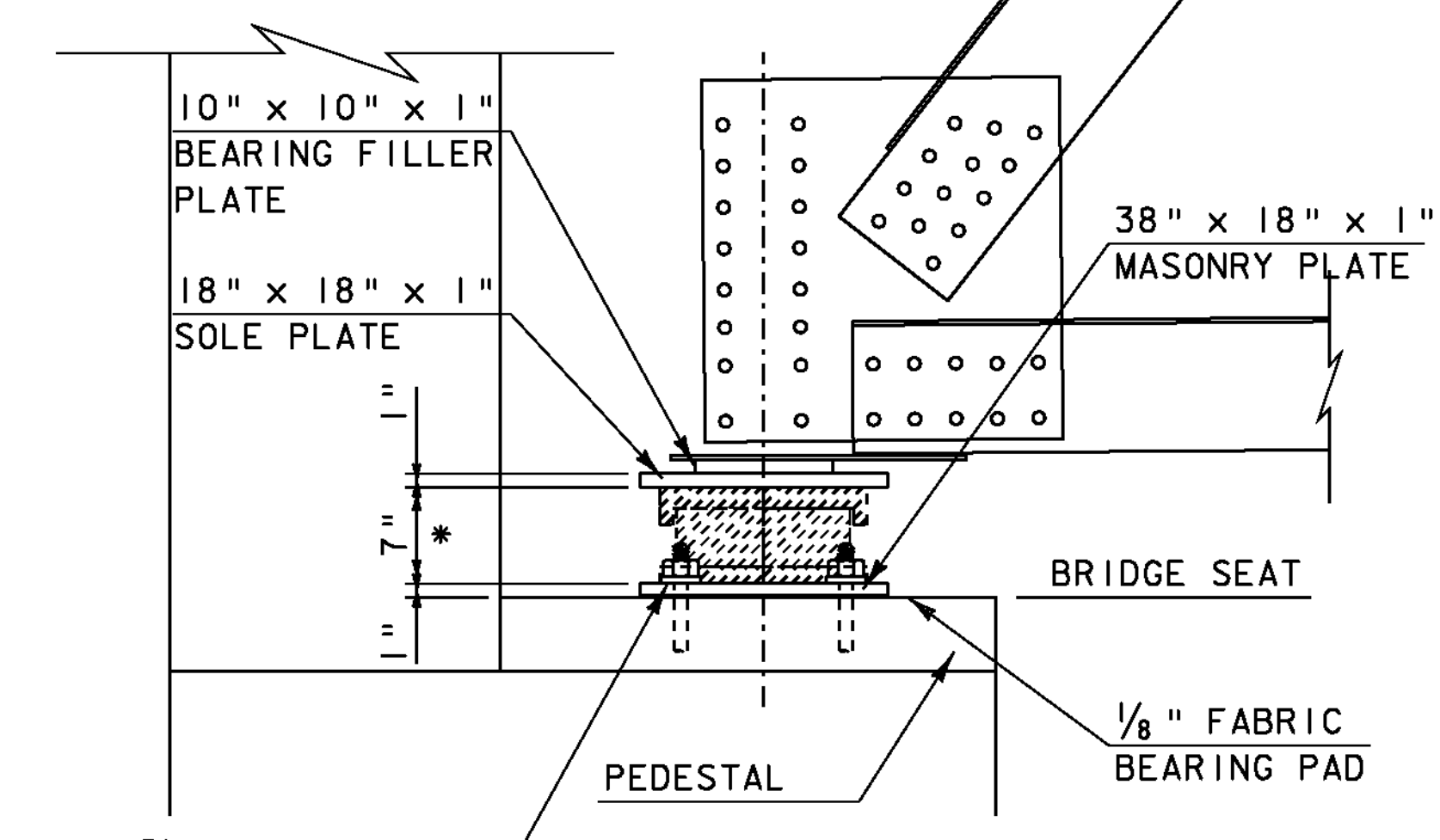
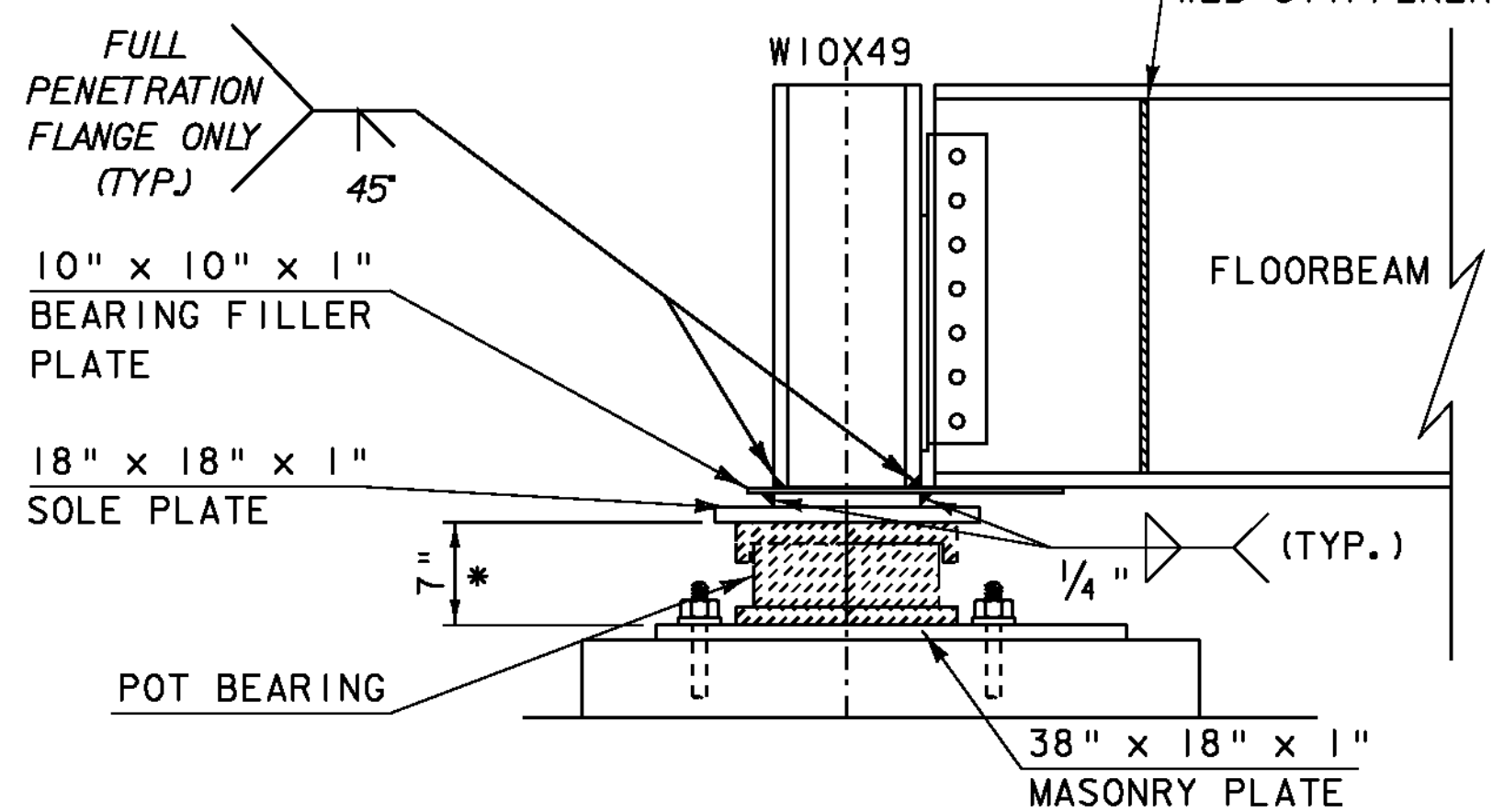


PLAN

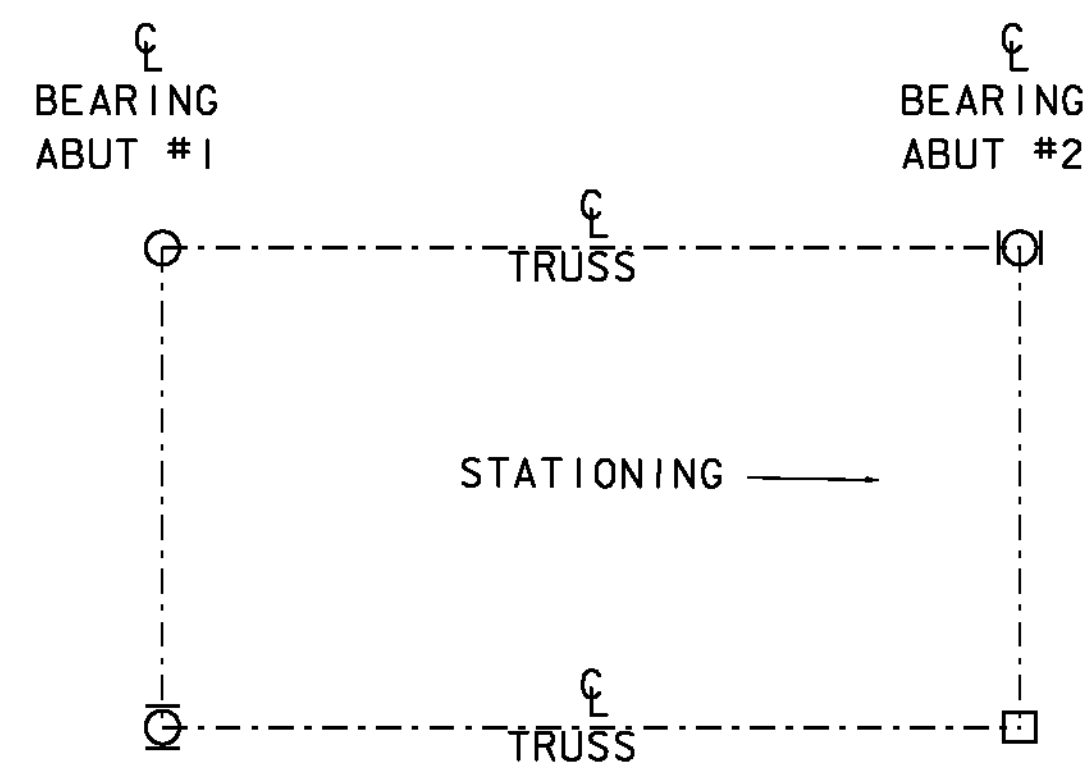


ELEVATION



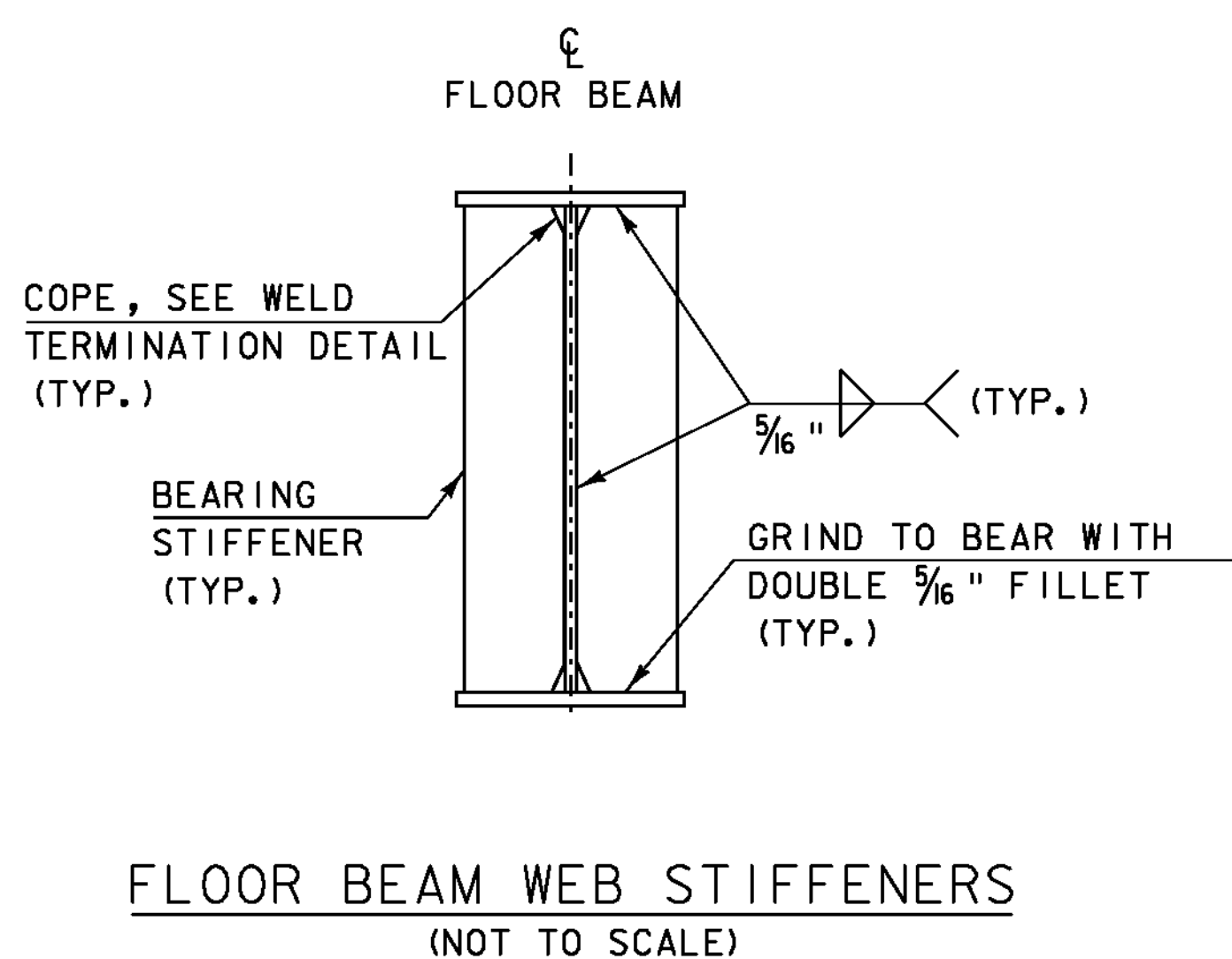
SECTION A-A

Design Load (kip)	Service Limit State	Vertical	Max	290
			Min	115
Strength Limit State			Permanent	120
			Transverse	15
			Longitudinal	40
			Vertical	435
Translation (in)	Service Limit State	Irreversible	Transverse	0
			Longitudinal	5/16
		Reversible	Transverse	1/8
			Longitudinal	5/8
Rotation (rad)	Service Limit State	Irreversible	Transverse	0.005
			Longitudinal	0.007
		Reversible	Transverse	0.003
			Longitudinal	0.005

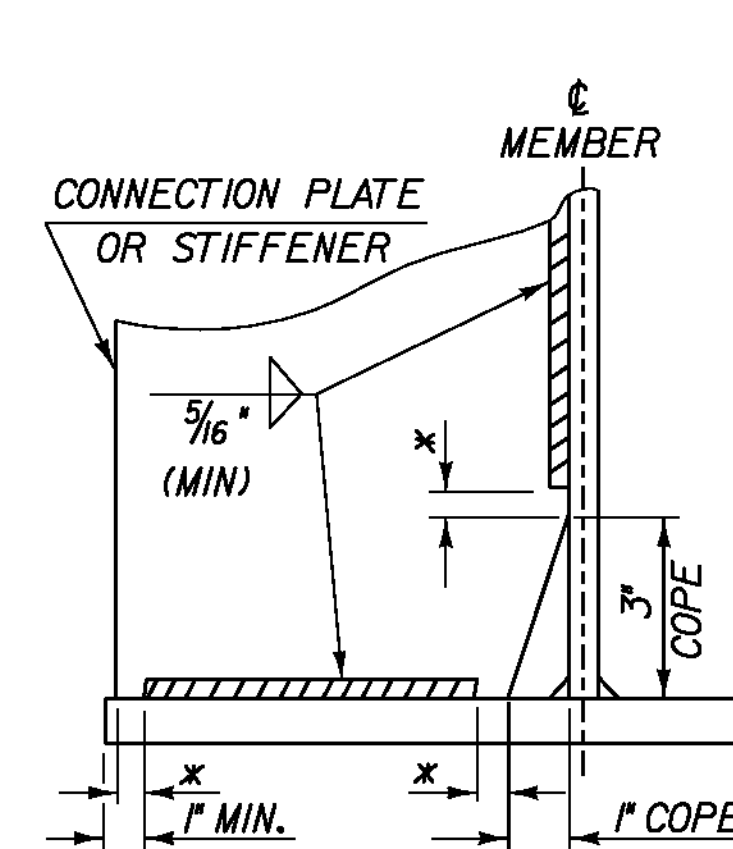


BEARING LAYOUT

LEGEND	
□	FIXED POT BEARING
○	GUIDED POT BEARING
○	UNRESTRAINED POT BEARING



FLOOR BEAM WEB STIFFENERS (NOT TO SCALE)



WELD TERMINATION AND COPING DETAILS FOR STEEL MEMBERS

* NO WELD FOR 3/8" MIN. 7/8" MAX. (EXCEPT MUST MAINTAIN 1" MINIMUM FROM EDGE OF FLANGE)

BEARING NOTES

- BEARINGS SHALL CONFORM TO APPLICABLE SUBSECTIONS OF STANDARD SPECIFICATIONS SECTIONS 513 AND 731.
- BEARINGS SHALL BE PAID FOR UNDER ITEM 531.12 "BEARING DEVICE ASSEMBLY, POT."
- ANCHOR BOLTS, INCLUDING DRILLING AND GROUTING, WASHERS AND NUTS SHALL BE PAID FOR UNDER ITEM 531.12 "BEARING DEVICE ASSEMBLY, POT."
- ALL WASHERS SHALL BE 3/8" PLATE (MINIMUM).
- ALL POTS, PLATES, NUTS, WASHERS AND ANCHOR BOLTS, UNLESS NOTED OTHERWISE, SHALL BE GALVANIZED OR METALIZED AS PER SUBSECTIONS 531.04 (B) AND 506.15 OF THE STANDARD SPECIFICATIONS. IF THE BEARINGS ARE METALIZED, THEY SHALL BE SEALED WITH AN APPROVED SEALER AS SPECIFIED IN SUBSECTION 506.15 (B) OF THE STANDARD SPECIFICATIONS. AREAS OF GALVANIZING OR METALIZING DAMAGED BY FIELD WELDING OR HANDLING SHALL BE REPAIRED IN CONFORMANCE WITH STANDARD SPECIFICATION SECTION 513. THE INSIDE OF THE POTS SHALL NOT BE GALVANIZED OR METALIZED.
- ALL STEEL IN BEARING DEVICES SHALL BE AASHTO M270M/M270 GRADE 50, UNLESS NOTED OTHERWISE.
- ANCHOR BOLTS SHALL BE ASTM A307 GRADE C WITH A MINIMUM YIELD STRENGTH OF 58 KSI AND HAVE A MINIMUM EMBEDMENT OF 15" INTO THE CONCRETE AND SHALL CONFORM TO SUBSECTION 714.08.
- THE CONCRETE UNDER THE BEARING DEVICE SHALL BE LEVEL.
- THE CONNECTION BETWEEN THE POT BEARING AND SOLE PLATE AND THE POT BEARING AND THE MASONRY PLATE SHALL BE DESIGNED AND DETAILED BY THE BEARING SUPPLIER.
- ALL DESIGNS DONE FOR THE BEARINGS SHALL BE PER THE AASHTO LRFD BRIDGE DESIGN SPECIFICATIONS 4TH EDITION AND ITS LATEST REVISIONS.
- ALTERNATE CONFIGURATIONS FOR BEARINGS MAY BE SUBMITTED FOR APPROVAL. ANY ALTERNATE SUBMITTED SHALL BE DESIGNED AND CERTIFIED TO MEET THE DESIGN LOADS AND CRITERIA SHOWN ON THE PLANS.
- BRIDGE SEAT ELEVATIONS MAY BE REVISED TO ACCOMMODATE AN ALTERNATIVE CONFIGURATION.
- ALL BEARINGS SHALL BE MARKED PRIOR TO SHIPPING. THE MARKS SHALL INCLUDE THE BEARING LOCATION ON THE BRIDGE AND A DIRECTION ARROW THAT POINTS UP-STATION. ALL MARKS SHALL BE PERMANENT AND BE VISIBLE AFTER THE BEARING IS INSTALLED.

* THE CROSS HATCHED COMPONENTS OF THE POT BEARINGS ARE SHOWN FOR REPRESENTATIVE PURPOSES ONLY. THE ACTUAL CONFIGURATION OF THE COMPONENTS WILL BE DEPENDENT UPON THE BEARING FABRICATOR.

PROJECT NAME: BRIDGEWATER
PROJECT NUMBER: BRS 0149(4)

FILE NAME: s86e062brldgeend.dgn PLOT DATE: 31-DEC-2009
PROJECT LEADER: K. HIGGINS DRAWN BY: R. PELLET
DESIGNED BY: T. FILLBACH CHECKED BY: T. FILLBACH
BEARING DETAILS SHEET 34 OF 58