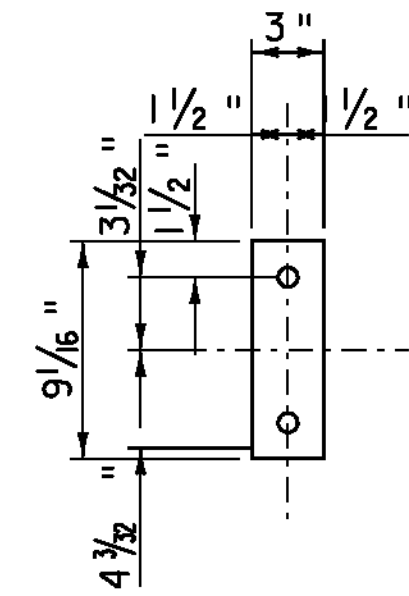


**PORTAL WEB  
PLATE**

PL  $\frac{5}{16} \times 9\frac{1}{16} \times 1'-0"$

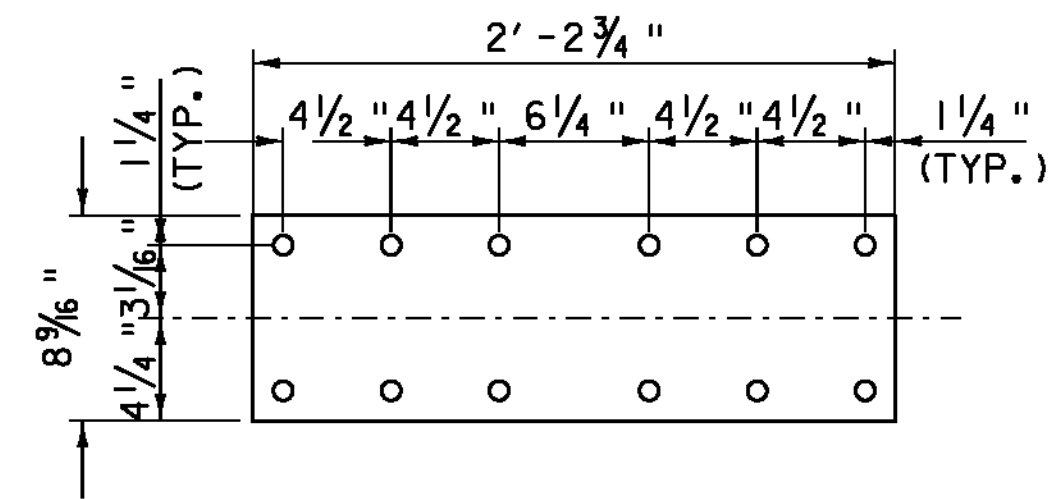
SCALE  $1\frac{1}{2}'' = 1'-0''$



**PORTAL WEB  
BAR**

PL  $\frac{5}{16} \times 3 \times 9\frac{1}{16}$

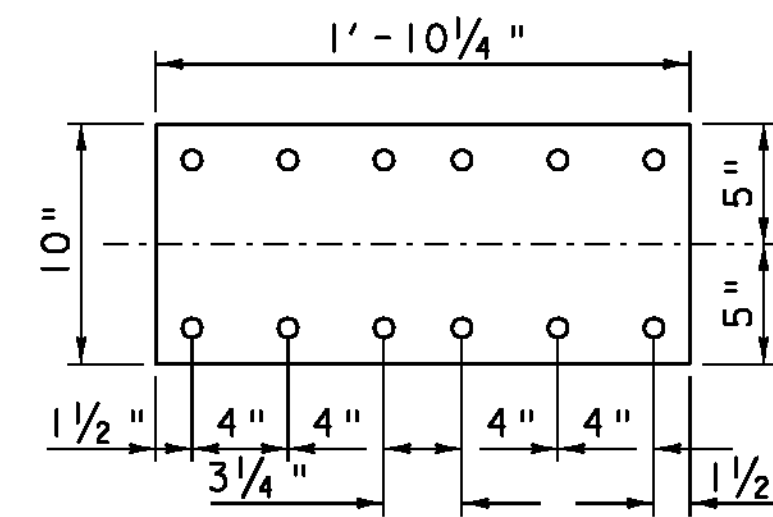
SCALE  $1\frac{1}{2}'' = 1'-0''$



**PORTAL WEB  
SPLICE PLATE**

PL  $\frac{5}{16} \times 8\frac{7}{16} \times 2'-2\frac{3}{4}"$

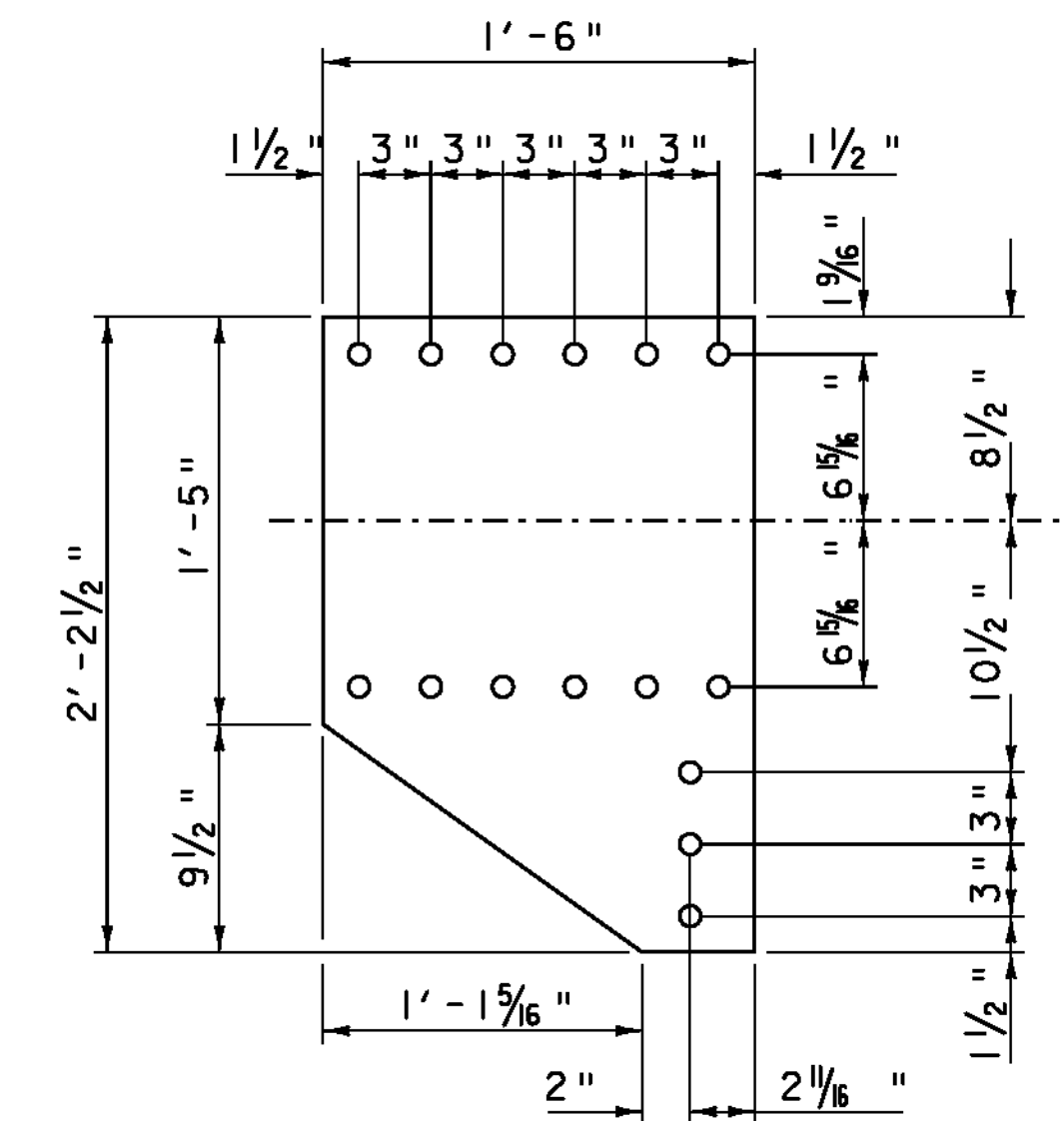
SCALE  $1\frac{1}{2}'' = 1'-0''$



**SWAY BRACE  
COVER PLATE**

PL  $\frac{5}{16} \times 10 \times 1'-10\frac{1}{4}"$

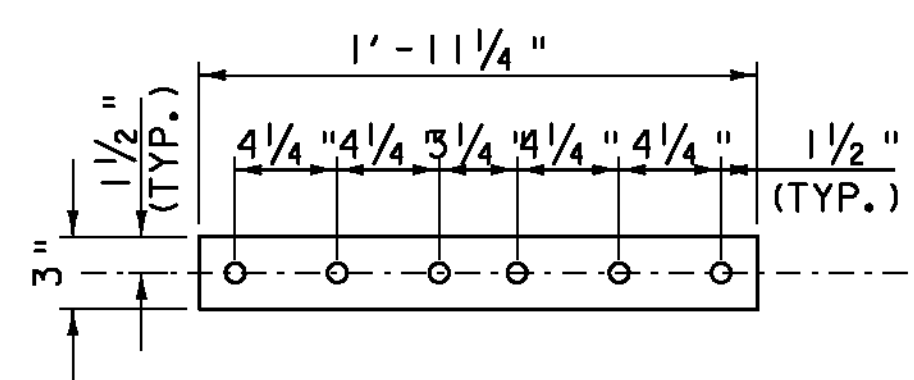
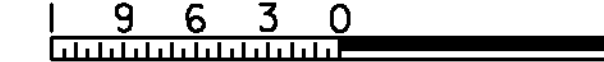
SCALE  $1\frac{1}{2}'' = 1'-0''$



**LOWER PORTAL PLATE**

PL  $\frac{3}{8} \times 18 \times 2'-2\frac{1}{2}"$

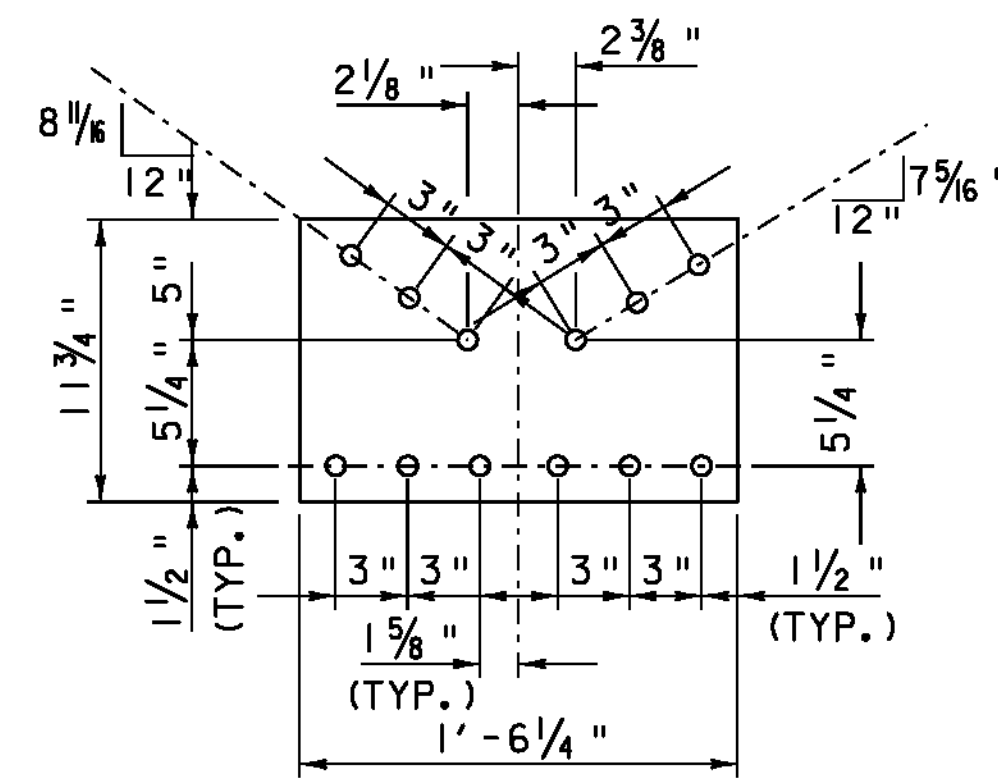
SCALE  $1\frac{1}{2}'' = 1'-0''$



**PORTAL REAR  
SPLICE PLATE**

PL  $\frac{5}{16} \times 3 \times 1'-11\frac{1}{4}"$

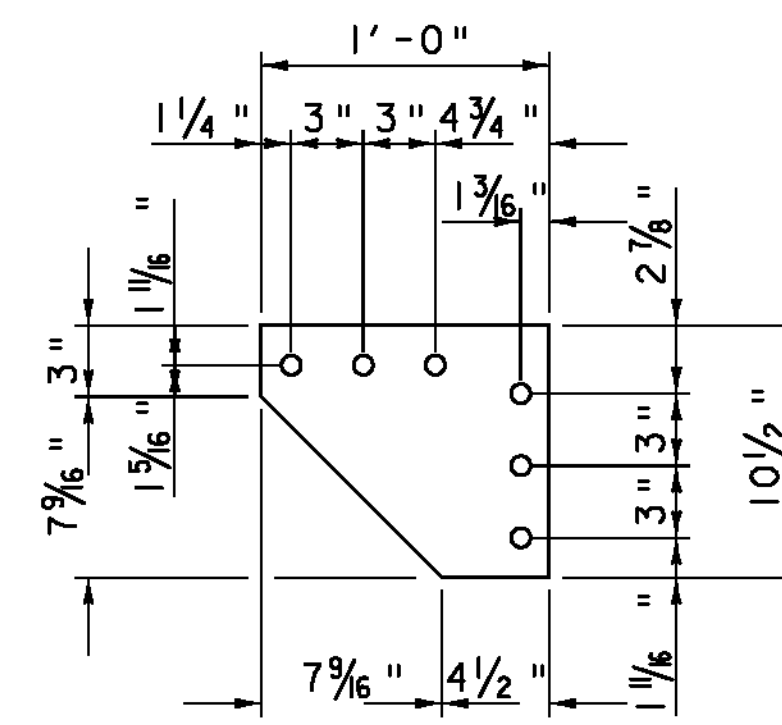
SCALE  $1\frac{1}{2}'' = 1'-0''$



**PORTAL FACE  
SPLICE PLATE**

PL  $\frac{5}{16} \times 11\frac{3}{4} \times 1'-6\frac{1}{4}"$

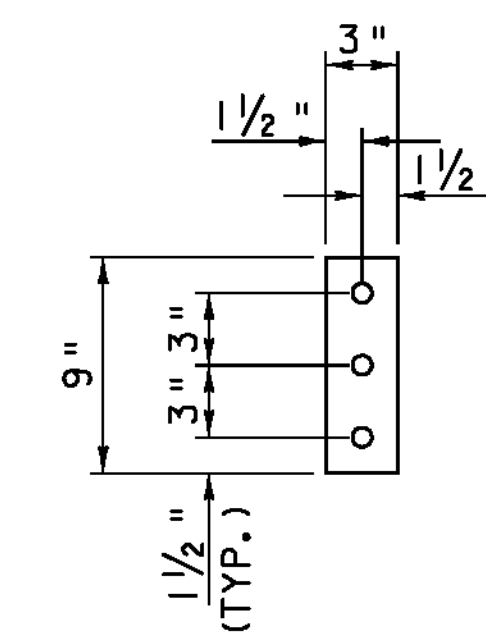
SCALE  $1\frac{1}{2}'' = 1'-0''$



**PORTAL BRACE  
CONNECTION PLATE**

PL  $\frac{5}{16} \times 10\frac{1}{2} \times 1'-0"$

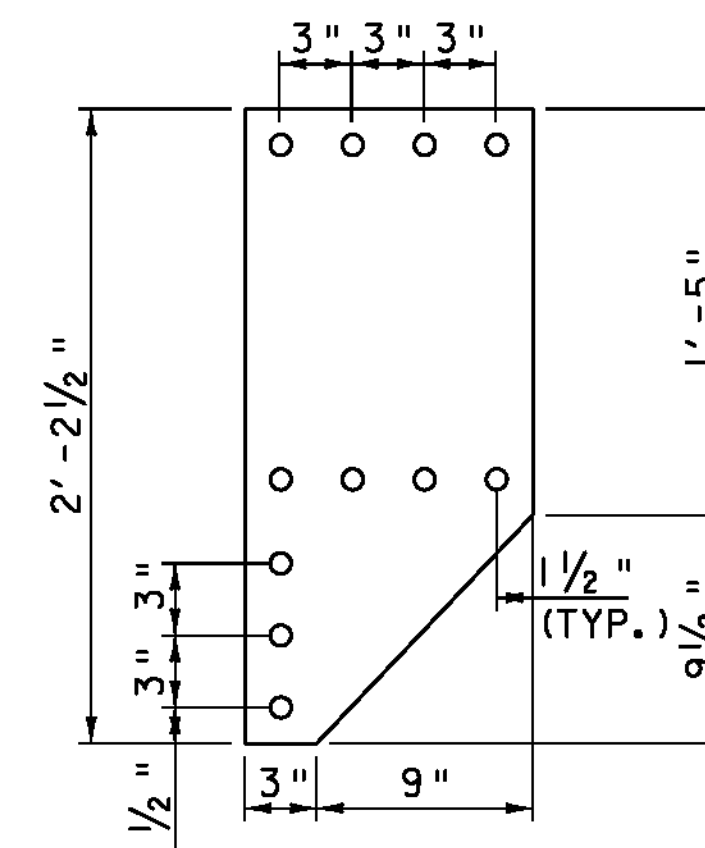
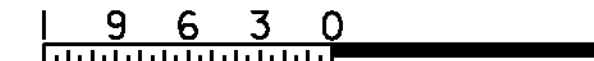
SCALE  $1\frac{1}{2}'' = 1'-0''$



**FILLER PLATE**

PL  $\frac{5}{16} \times 3 \times 9$

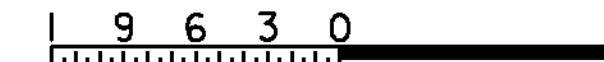
SCALE  $1\frac{1}{2}'' = 1'-0''$



**UPPER PORTAL PLATE**

PL  $\frac{5}{16} \times 12 \times 2'-2\frac{1}{2}"$

SCALE  $1\frac{1}{2}'' = 1'-0''$



**NOTE:**

1. HATCHED COMPONENTS ARE NEW
2.  $\frac{3}{4}$ " DIAMETER BOLTS IN  $\frac{5}{16}$ " HOLE, UNLESS OTHERWISE NOTED.
3. MINIMUM BOLT EDGE AND DISTANCE =  $1\frac{1}{2}$ ", UNLESS OTHERWISE NOTED.

PROJECT NAME: BRIDGEWATER

PROJECT NUMBER: BRS 0149(4)

FILE NAME: s86e062roof.dgn

PROJECT LEADER: K. HIGGINS

DESIGNED BY: T. FILLBACH

PORTAL DETAILS

PLOT DATE: 31-DEC-2009

DRAWN BY: C. MOONEY

CHECKED BY: T. FILLBACH

SHEET 32 OF 58