

BEARING
ABUTMENT 1
EXPANSION

REPLACE MEMBER

BEARING
ABUTMENT 2
FIXED

TYPICAL TRUSS ELEVATION

(UP STREAM TRUSS LOOKING EAST
DOWNSTREAM TRUSS SIMILAR)

SCALE 1/8" = 1'-0"

10 2 4 6 8

THE MEMBERS SHOWN TO BE REPLACED ABOVE ARE THE MINIMUM REQUIREMENT. FIELD INSPECTION MAY REQUIRE THAT ADDITIONAL MEMBERS BE REPLACED. ALL REPLACEMENT MEMBERS SHALL BE OF EQUAL GEOMETRY AND SECTION PROPERTIES AS THOSE BEING REPLACED (UNLESS OTHERWISE NOTED).

TRUSS MEMBER SUMMARY

BOTTOM CHORD (SEE SHEETS 21 & 22)

L0-L2-L0 2-C9x20
PL 5/16 x 10

END PORTAL (SEE SHEET 26)

EPI 2-C10x20x24'-6 1/4"
PL 5/8 x 17x24'-6 5/8"

VERTICALS (SEE SHEET 24)

L0 W10x49x2'-4 1/2"
L1-U1 W10x49x18'-4"
L2-U2 W10x49x19'-9"
L3-U3V W10x49x19'-9"

TOP CHORD (SEE SHEETS 27 & 28)

U1-3 2-C10x20x31'-10 5/16"
PL 5/8 x 17x31'-10 5/16"
U3-3 2-C10x20x15'-10 5/16"
PL 5/8 x 17x15'-10 5/16"

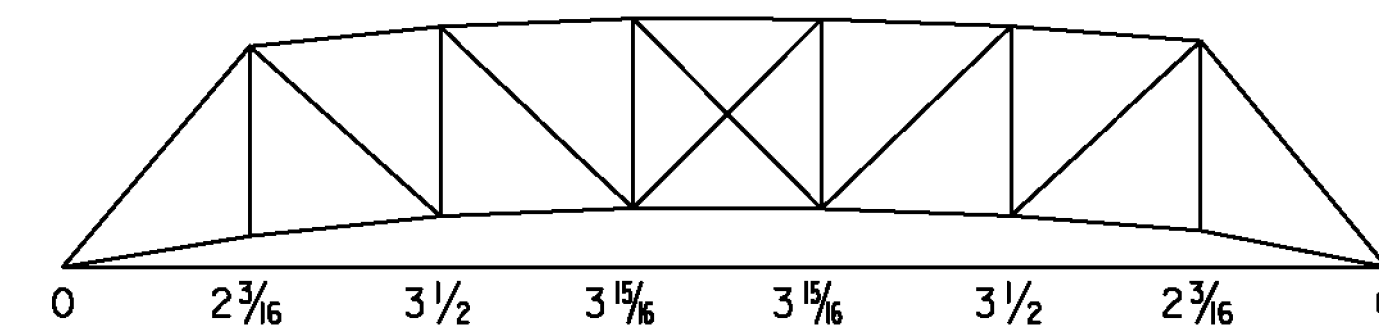
DIAGONALS (SEE SHEET 25)

L2-U1 2-WT 4x14 23'-8 1/4"
L3-U2 2-L5x3x3/8 23'-8 1/4"

REHABILITATION OF TRUSS BRIDGE

- REPLACE ALL FLOOR BEAMS WITH NEW FLOOR BEAMS WITH SHEAR CONNECTORS.
- REPLACE ALL STRINGERS WITH NEW STRINGERS WITH SHEAR CONNECTORS.
- REPLACE BOTTOM LATERAL BRACING WITH NEW ANGLES AND PLATES.
- REPLACE ALL CONNECTIONS BETWEEN STRINGERS AND FLOOR BEAMS, AND FLOOR BEAMS TO TRUSS MEMBERS.
- REPLACE TRUSS MEMBERS AS SHOWN.
- REPLACE BEARINGS.
- REPLACE BRIDGE RAILING.
- REPLACE CONCRETE DECK WITH HALF-FILLED GRID DECK.
- CLEAN AND PAINT EXISTING MEMBERS.

ALL NEW
STEEL TRUSS



CAMBER DIAGRAM

NOT TO SCALE

PROJECT NAME: BRIDGEWATER

PROJECT NUMBER: BRS 0149(4)

FILE NAME: s86e062truss.dgn

PROJECT LEADER: K. HIGGINS

DESIGNED BY: T. FILLBACH

TRUSS REPAIRS

PLOT DATE: 25-JAN-2010

DRAWN BY: C. MOONEY

CHECKED BY: T. FILLBACH

SHEET 19 OF 58