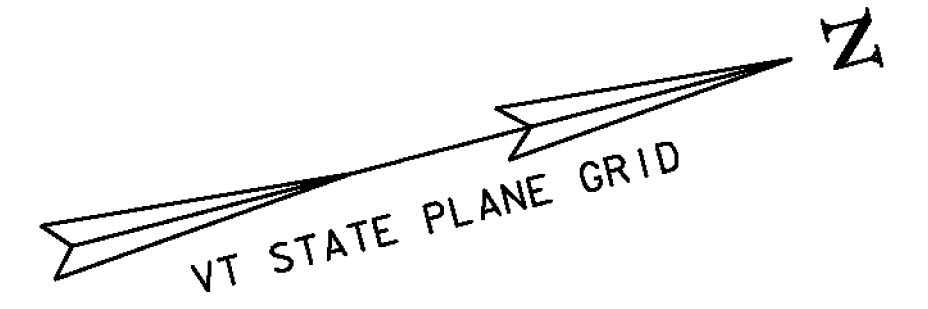


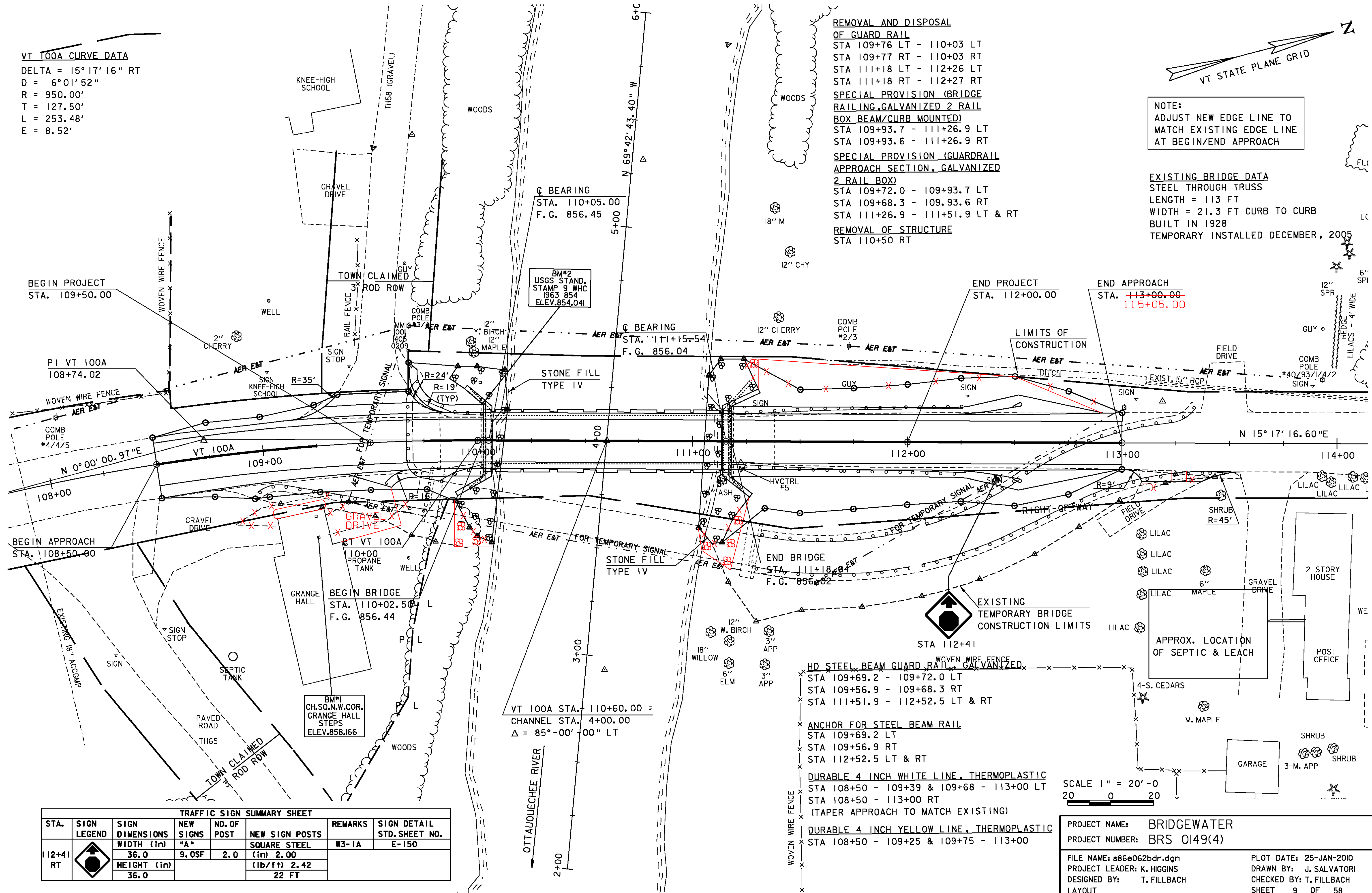
VT 100A CURVE DATA  
 DELTA = 15° 17' 16" RT  
 D = 6° 01' 52"  
 R = 950.00'  
 T = 127.50'  
 L = 253.48'  
 E = 8.52'



**REMOVAL AND DISPOSAL OF GUARD RAIL**  
 STA 109+76 LT - 110+03 LT  
 STA 109+77 RT - 110+03 RT  
 STA 111+18 LT - 112+26 LT  
 STA 111+18 RT - 112+27 RT  
**SPECIAL PROVISION (BRIDGE RAILING, GALVANIZED 2 RAIL BOX BEAM/CURB MOUNTED)**  
 STA 109+93.7 - 111+26.9 LT  
 STA 109+93.6 - 111+26.9 RT  
**SPECIAL PROVISION (GUARDRAIL APPROACH SECTION, GALVANIZED 2 RAIL BOX)**  
 STA 109+72.0 - 109+93.7 LT  
 STA 109+68.3 - 109.93.6 RT  
 STA 111+26.9 - 111+51.9 LT & RT  
**REMOVAL OF STRUCTURE**  
 STA 110+50 RT

NOTE:  
 ADJUST NEW EDGE LINE TO MATCH EXISTING EDGE LINE AT BEGIN/END APPROACH

**EXISTING BRIDGE DATA**  
 STEEL THROUGH TRUSS  
 LENGTH = 113 FT  
 WIDTH = 21.3 FT CURB TO CURB  
 BUILT IN 1928  
 TEMPORARY INSTALLED DECEMBER, 2005



TRAFFIC SIGN SUMMARY SHEET						
STA.	SIGN LEGEND	SIGN DIMENSIONS	NEW SIGNS	NO. OF POST	NEW SIGN POSTS	REMARKS
112+41 RT		WIDTH (in) 36.0	9.0SF	2.0	(in) 2.00 (lb/ft) 2.42 22 FT	W3-1A
		HEIGHT (in) 36.0				E-150

**HD STEEL BEAM GUARD RAIL, GALVANIZED**  
 STA 109+69.2 - 109+72.0 LT  
 STA 109+56.9 - 109+68.3 RT  
 STA 111+51.9 - 112+52.5 LT & RT  
**ANCHOR FOR STEEL BEAM RAIL**  
 STA 109+69.2 LT  
 STA 109+56.9 RT  
 STA 112+52.5 LT & RT  
**DURABLE 4 INCH WHITE LINE, THERMOPLASTIC**  
 STA 108+50 - 109+39 & 109+68 - 113+00 LT  
 STA 108+50 - 113+00 RT  
 (TAPER APPROACH TO MATCH EXISTING)  
**DURABLE 4 INCH YELLOW LINE, THERMOPLASTIC**  
 STA 108+50 - 109+25 & 109+75 - 113+00

SCALE 1" = 20'-0"  
 20 0 20

PROJECT NAME: BRIDGEWATER  
 PROJECT NUMBER: BRS 0149(4)  
 FILE NAME: s86e062bdr.dgn  
 PROJECT LEADER: K. HIGGINS  
 DESIGNED BY: T. FILLBACH  
 LAYOUT  
 PLOT DATE: 25-JAN-2010  
 DRAWN BY: J. SALVATORI  
 CHECKED BY: T. FILLBACH  
 SHEET 9 OF 58