

GPS CONTROL POINTS

**HVCTRL #1**  
 BRIDGEWATER CORNER  
 NORTH = 397008.317  
 EAST = 1598023.065  
 ELEV. = 865.63

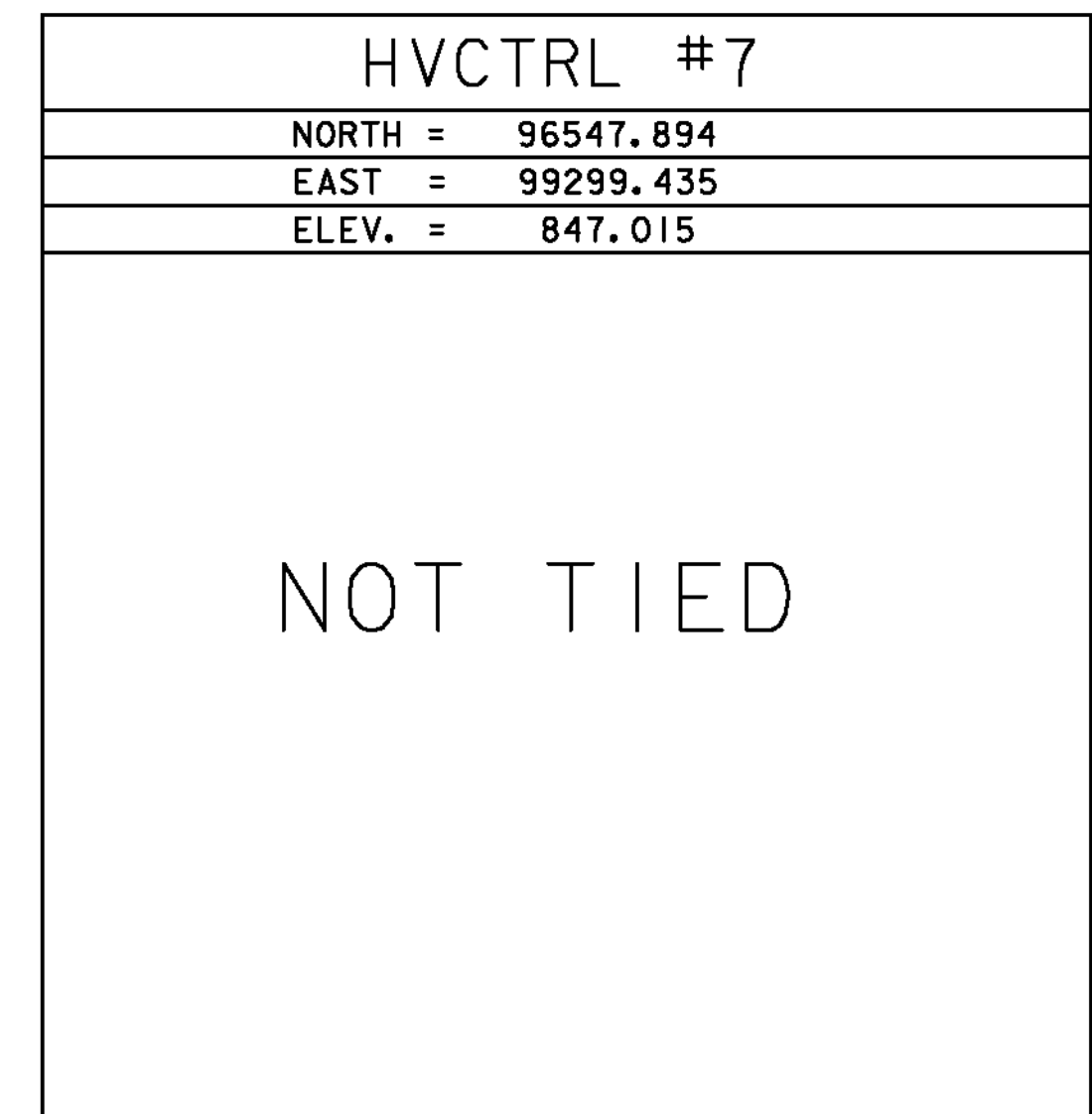
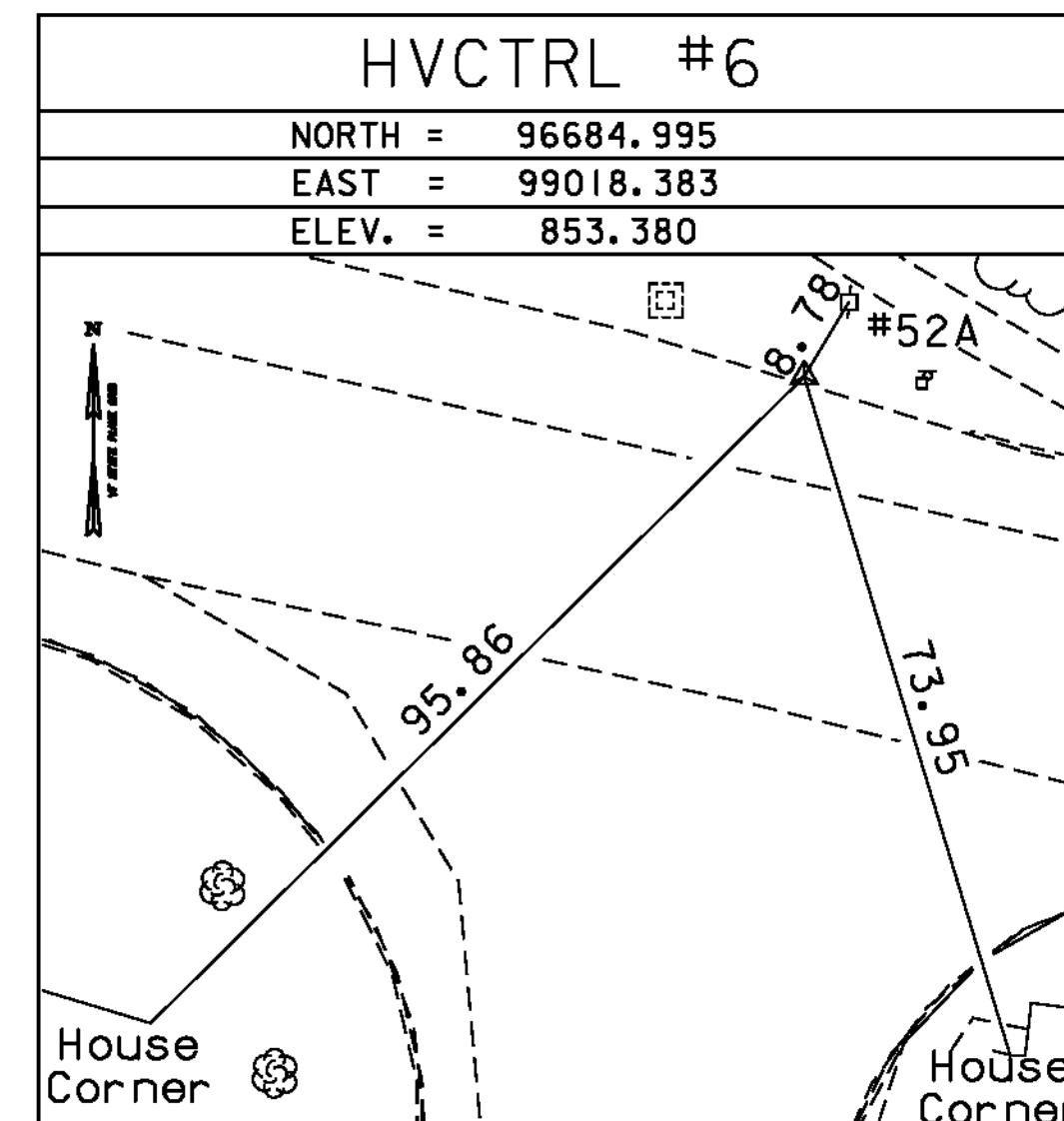
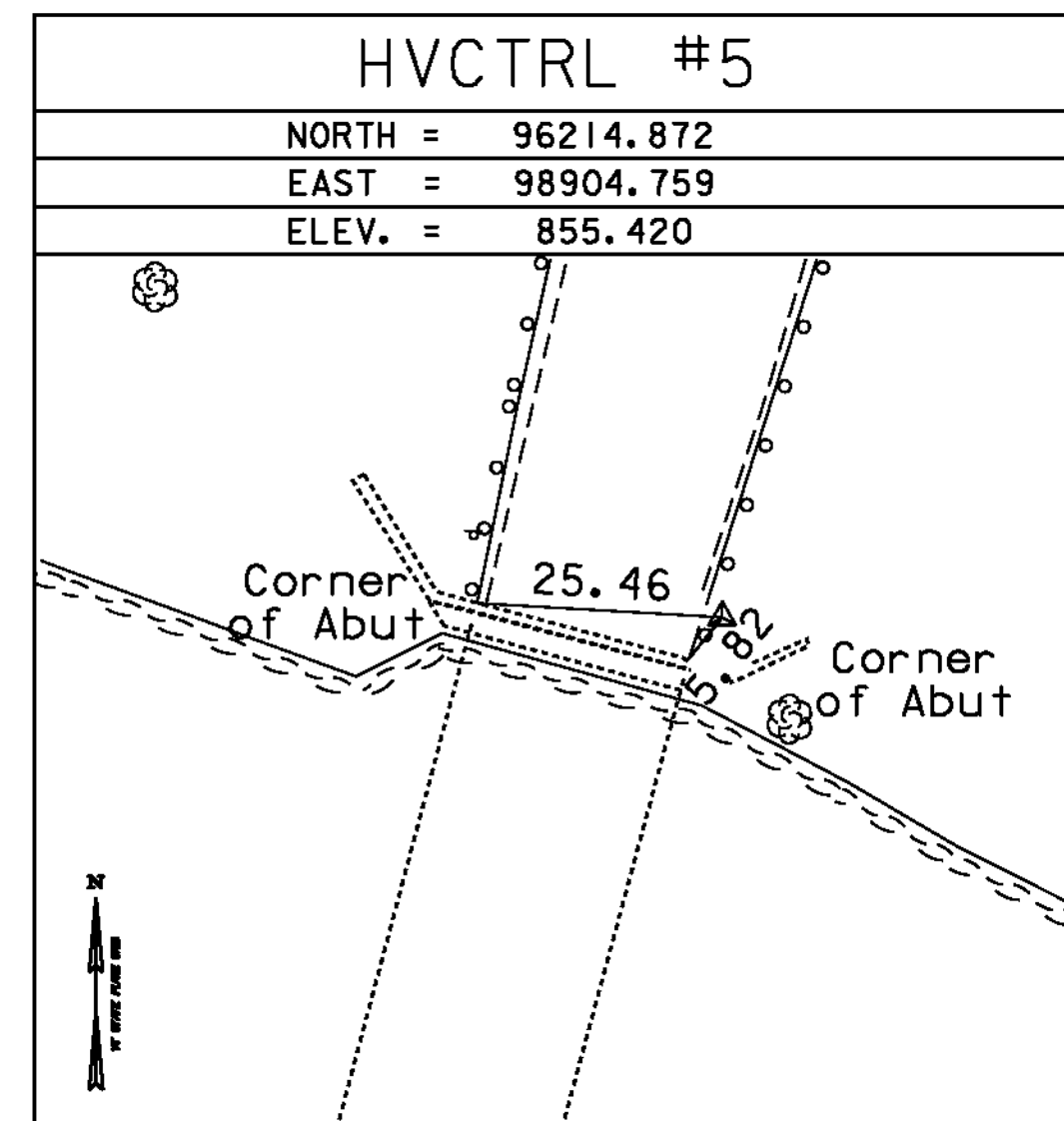
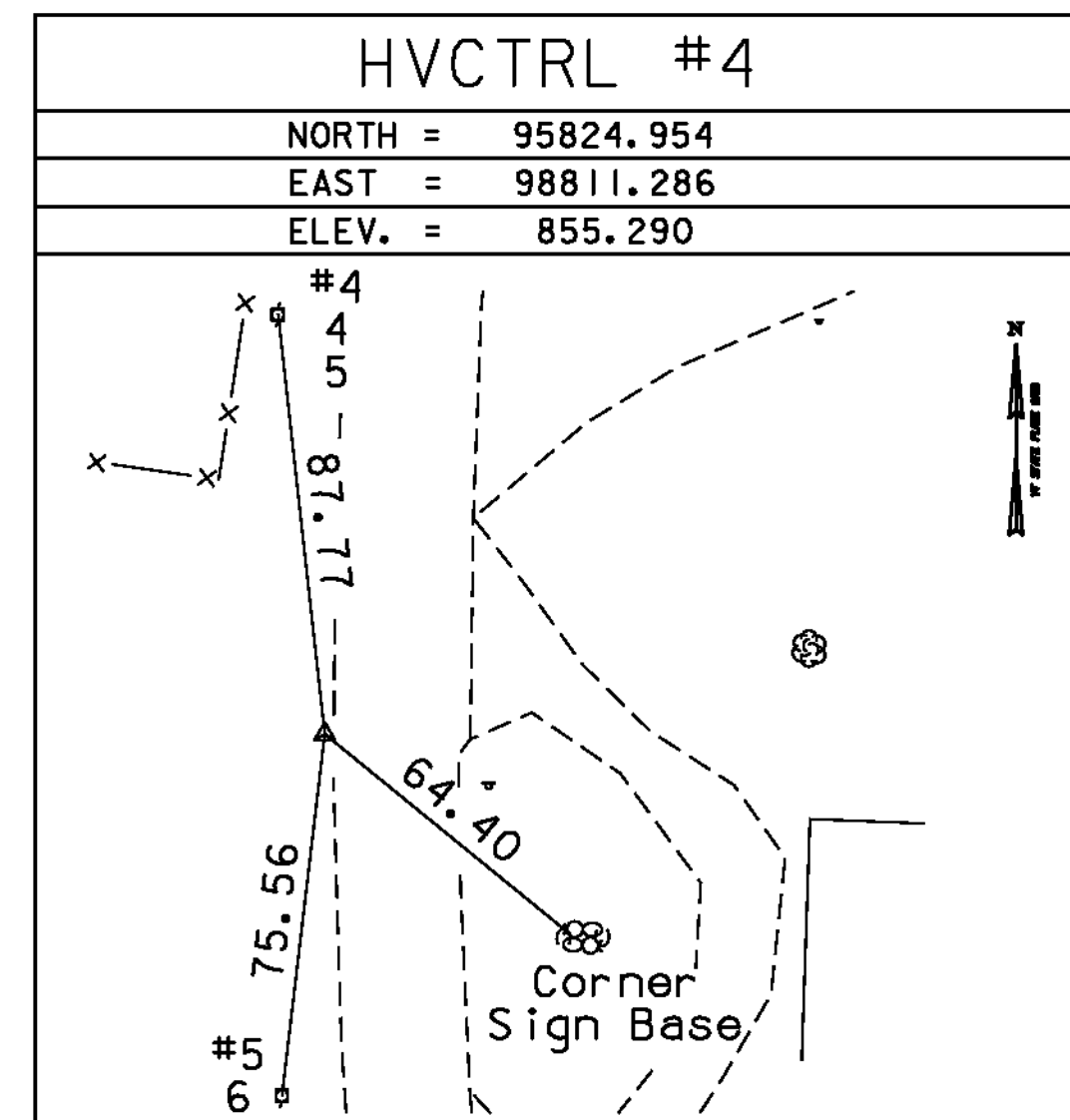
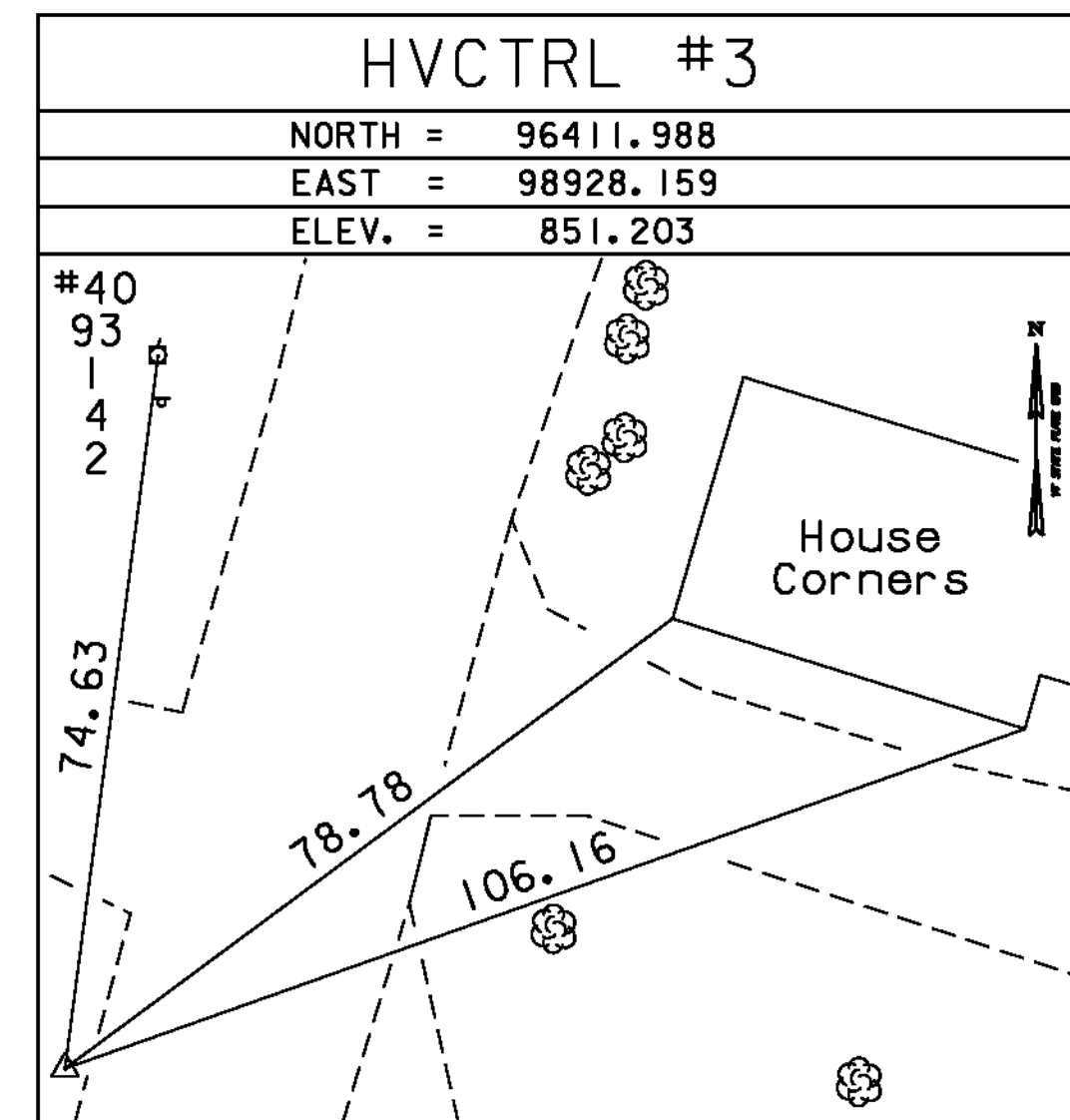
GENERAL LOCATION, BRIDGEWATER CORNERS, ABOUT 15.5 MI (24.9 KM) EAST OF RUTLAND, ABOUT 7.5 MI (12.1 KM) WEST OF WOODSTOCK. TO REACH FROM THE INTERSECTION OF U.S. ROUTE 4 AND VT ROUTE 100A IN BRIDGEWATER CORNERS GO WEST ALONG U.S. ROUTE 4 FOR 0.2 MI (0.3 KM) TO THE MARK ON THE LEFT, OPPOSITE THE CENTER ROAD. THE MARK IS 1.7 M (5.6 FT) SOUTHWEST OF AND ABOUT LEVEL WITH THE SOUTHWEST EDGE OF PAVEMENT OF U.S. ROUTE 4, 23.5 M (77.1 FT) NORTHWEST OF AN INFORMATIONAL SIGN, AND 0.6 M (2.0 FT) NORTHEAST OF A FIBERGLASS WITNESS POST. IT IS SET FLUSH WITH GROUND SURFACE IN THE TOP OF A 30-CM DIAMETER CONCRETE MONUMENT. NOTE--STAMPING B94039 ADDED ON 10081994.

**HVCTRL #2**  
 BRIDGEWATER CORNER AZ  
 NORTH = 396232.940  
 EAST = 1600185.429  
 ELEV. = 862.92

GENERAL LOCATION, BRIDGEWATER CORNERS, ABOUT 15.5 MI (24.9 KM) EAST OF RUTLAND, ABOUT 7.5 MI (12.1 KM) WEST OF WOODSTOCK. TO REACH FROM THE INTERSECTION OF U.S. ROUTE 4 AND VT ROUTE 100A IN BRIDGEWATER CORNERS GO EAST ALONG U.S. ROUTE 4 FOR 0.25 MI (0.40 KM) TO THE MARK ON THE RIGHT, ABOUT 40 M (131.2 FT) WEST OF THE INTERSECTION OF THE CORNERS INN ROAD. THE MARK IS 1.0 M (3.3 FT) SOUTH OF AND ABOUT LEVEL WITH THE SOUTH EDGE OF PAVEMENT OF U.S. ROUTE 4, 57.2 M (187.7 FT) EAST OF THE CENTERLINE OF A FIELD DRIVE ENTRANCE, AND 0.4 M (1.3 FT) NORTH OF A FIBERGLASS WITNESS POST. IT IS SET FLUSH WITH GROUND SURFACE IN THE TOP OF A 30-CM DIAMETER CONCRETE MONUMENT.

\*\*To bring this project to Vermont State Plane coordinates add 300,000 to the northings and add 1,600,000 to the eastings

TRAVERSE TIES



\* Main Traverse Completed 8/12/91 by R. Moreau P.C. L. Orvis

ALIGNMENT TIES

Mainline			
	STATION	NORTHING	EASTING
POB	107+00.00	95802.7508	98826.4403
Tangent Direction:		N 0°00'00.97" E	
Tangent Length:		46.52	
PC	107+46.52	95849.2708	98826.4406
PI	108+74.02	95976.7677	98826.4412
PT	110+00.00	96099.7529	98860.0583
Radius:		950.0	
Design Speed (mph):		50.00	
Delta:		15°17'15.63" Right	
Degree of Curve (Arc):		6°01'52.08"	
Length:		253.48	
Tangent:		127.50	
Chord:		252.73	
Middle Ordinate:		8.44	
External:		8.52	
POE	114+50.00	96533.8287	98978.7098
Tangent Direction:		N 15°17'16.60" E	
Tangent Length:		450.00	

NORTH =
EAST =
ELEV. =

NORTH =
EAST =
ELEV. =

NORTH =
EAST =
ELEV. =

\* Alignment Data as of 18 May 2009

DATUM	
VERTICAL	NAVD 88
HORIZONTAL	NAD 83(86)
ADJUSTMENT	Least Sq

PROJECT NAME:	Brldgewater
PROJECT NUMBER:	BRS 0149(4)
FILE NAME:	86e062\survey\x86e062fl.dgn
PROJECT LEADER:	K. HIGGINS
DESIGNED BY:	SURVEY
TIE	
PLOT DATE:	31-DEC-2009
DRAWN BY:	R. Bullock
CHECKED BY:	SURVEY
SHEET	8 OF 58