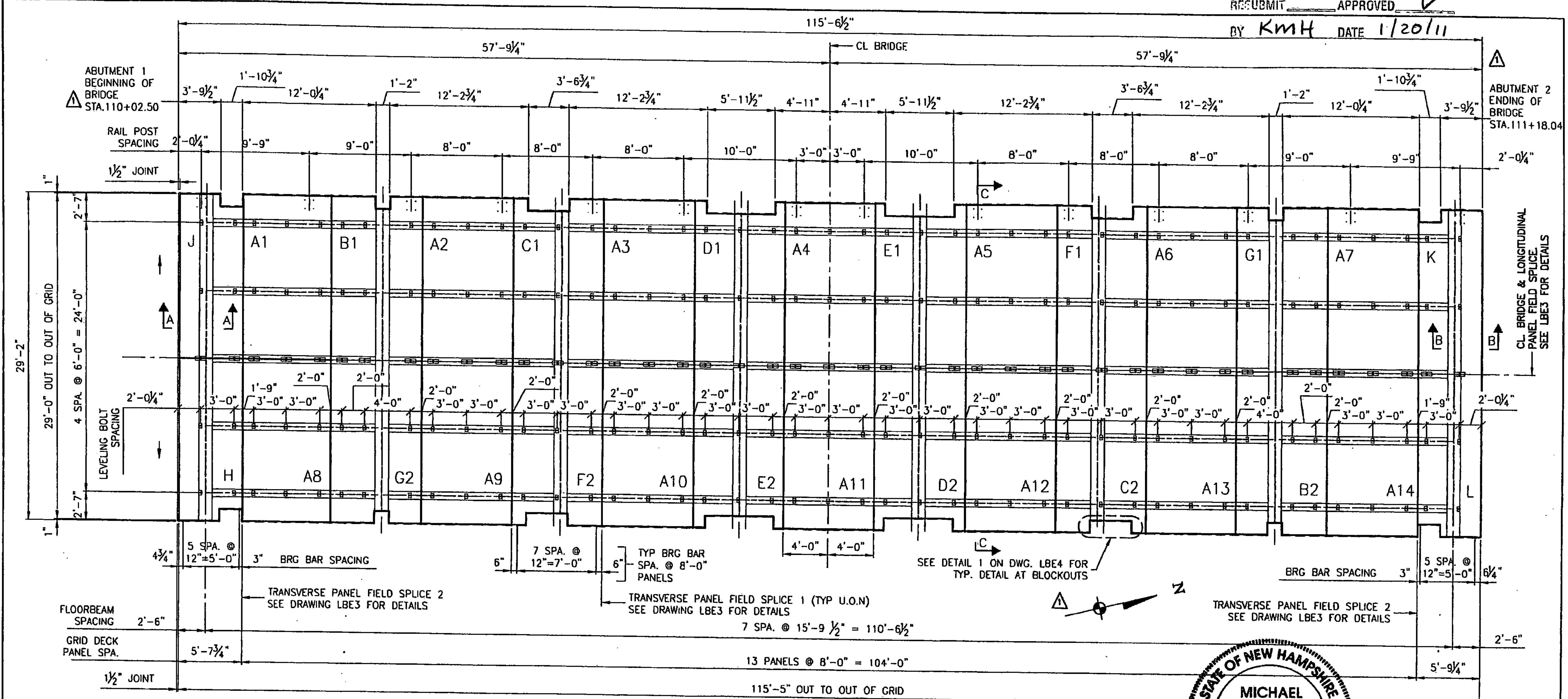


RECEIVED
 767

JAN 17 2011

RESUBMIT _____ APPROVED
 BY KMH DATE 1/20/11

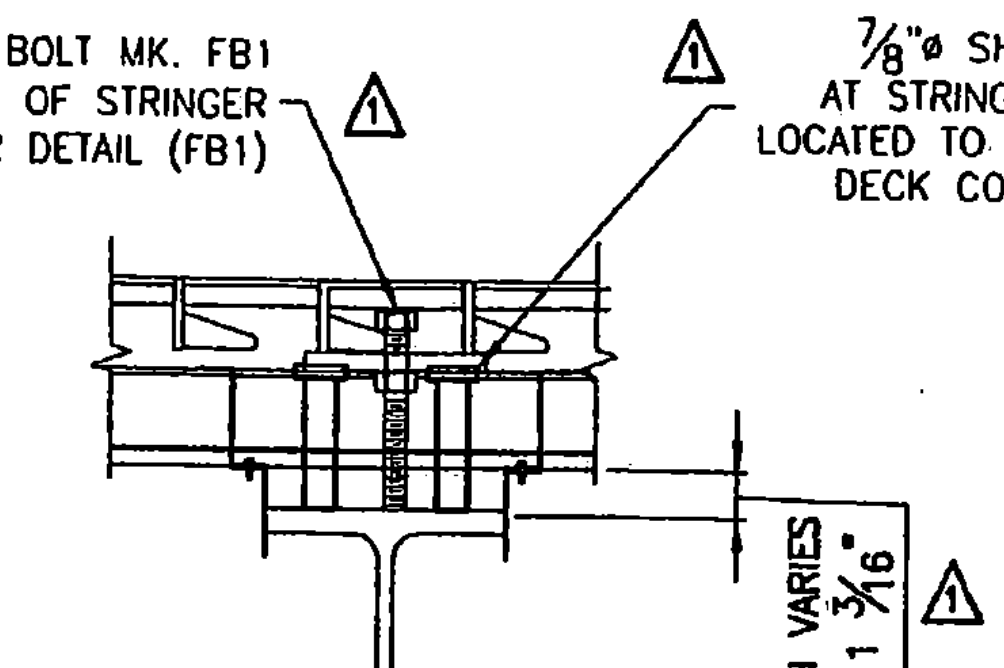


NOTES:
 DURING ERECTION OF GRID FLOOR UNITS, CARE MUST BE EXERCISED, TO PLACE EACH UNIT IN ITS PROPER LOCATION, MEASURING IN ALL CASES FROM SOME FIXED POINT AS OTHERWISE A CUMULATIVE ERROR IN SPACING WILL APPEAR CAUSING THE SPACE FOR THE FINAL UNITS TO BE MORE OR LESS THAN THE ACTUAL WIDTH OF UNITS.
 PANELS WITH LIKE MARKS SUCH AS A1, A2, A3, ETC. ARE ALIKE AND INTERCHANGEABLE.
 SEE SHEET LB1 FOR GENERAL NOTES AND TYPICAL DETAILS.

INDICATES DIRECTION OF SLOT IN BEARING BAR

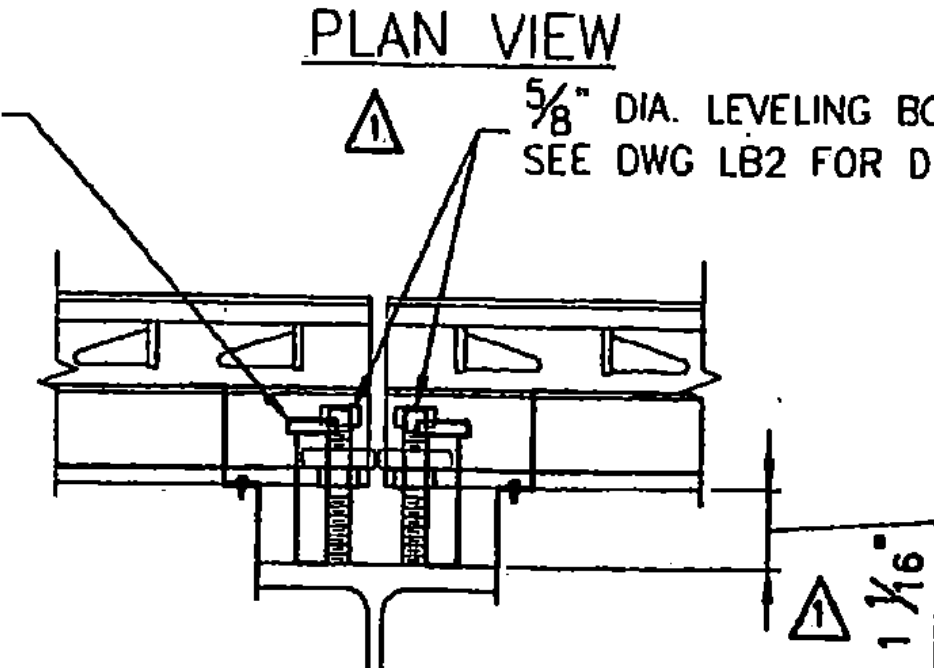
5/8" DIA. LEVELING BOLT MK. FB1 AT ABOUT THE CL OF STRINGER SEE DWG LB2 FOR DETAIL (FB1)

7/8" SHEAR STUD AT STRINGER TO BE LOCATED TO MISS GRID DECK COMPONENTS



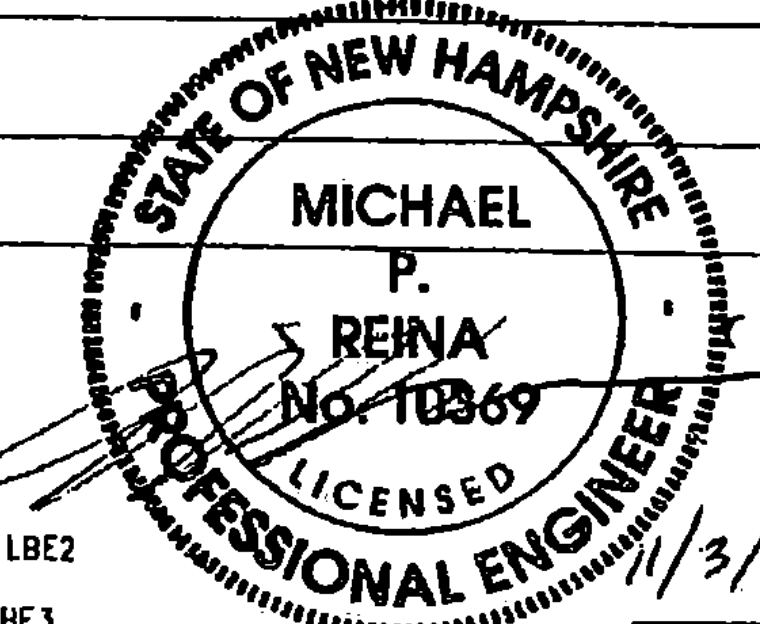
GRID LEVELING DETAIL AT STRINGERS S1 & S2

5/8" DIA. LEVELING BOLTS MK. FB2 SEE DWG LB2 FOR DETAIL (FB2)



GRID LEVELING DETAIL AT STRINGER S3

FOR SECTIONS AA, BB & CC SEE DWG LBE2
 FOR PANEL SPICE DETAILS SEE DWG LBE3.
 COORDINATE PANEL SPACING, BEARING BAR SPACING HSI SPACING AND LEVELING PLATE SPACING WITH STRINGER AND FLOORBEAM SHOP DRAWINGS IN ORDER TO AVOID CONFLICT WITH SHEAR STUDS.
 SEE DWG. LBE2 FOR HAUNCH FORMING DETAILS
 U.O.N.: UNLESS OTHERWISE NOTED.



| | |
|---|----------------|
| APPROVED: | DATE: |
| L. B. FOSTER CO. | |
| PITTSBURGH, PENNSYLVANIA 15220 | |
| FOR: MILLER CONSTRUCTION | |
| STATE OF VERMONT AGENCY OF TRANSPORTATION | |
| TOWN OF BRIDGEWATER, COUNTY OF WINDSOR | |
| VT. ROUTE 100A, BR14 PROJ. NO. BRS 0148 (4) | |
| GENERAL NOTES AND TYPICAL DETAILS | |
| WPO DATE: 8/18/10 | JOB NO. SD0339 |
| RLP DATE: 9/11/10 | DWG. NO. LBE1 |
| REVISED PER APPROVER'S COMMENTS | DATE |
| 1 | 10/25 |
| 2 | 10 |
| 3 | |
| 4 | |
| 5 | |
| 6 | |
| 7 | |
| 8 | |
| 9 | |
| 10 | |
| 11 | |
| 12 | |
| 13 | |
| 14 | |
| 15 | |
| 16 | |
| 17 | |
| 18 | |
| 19 | |
| 20 | |
| 21 | |
| 22 | |
| 23 | |
| 24 | |
| 25 | |
| 26 | |
| 27 | |
| 28 | |
| 29 | |
| 30 | |
| 31 | |
| 32 | |
| 33 | |
| 34 | |
| 35 | |
| 36 | |
| 37 | |
| 38 | |
| 39 | |
| 40 | |
| 41 | |
| 42 | |
| 43 | |
| 44 | |
| 45 | |
| 46 | |
| 47 | |
| 48 | |
| 49 | |
| 50 | |
| 51 | |
| 52 | |
| 53 | |
| 54 | |
| 55 | |
| 56 | |
| 57 | |
| 58 | |
| 59 | |
| 60 | |
| 61 | |
| 62 | |
| 63 | |
| 64 | |
| 65 | |
| 66 | |
| 67 | |
| 68 | |
| 69 | |
| 70 | |
| 71 | |
| 72 | |
| 73 | |
| 74 | |
| 75 | |
| 76 | |
| 77 | |
| 78 | |
| 79 | |
| 80 | |
| 81 | |
| 82 | |
| 83 | |
| 84 | |
| 85 | |
| 86 | |
| 87 | |
| 88 | |
| 89 | |
| 90 | |
| 91 | |
| 92 | |
| 93 | |
| 94 | |
| 95 | |
| 96 | |
| 97 | |
| 98 | |
| 99 | |
| 100 | |

182 PREFAB DECK PANELS