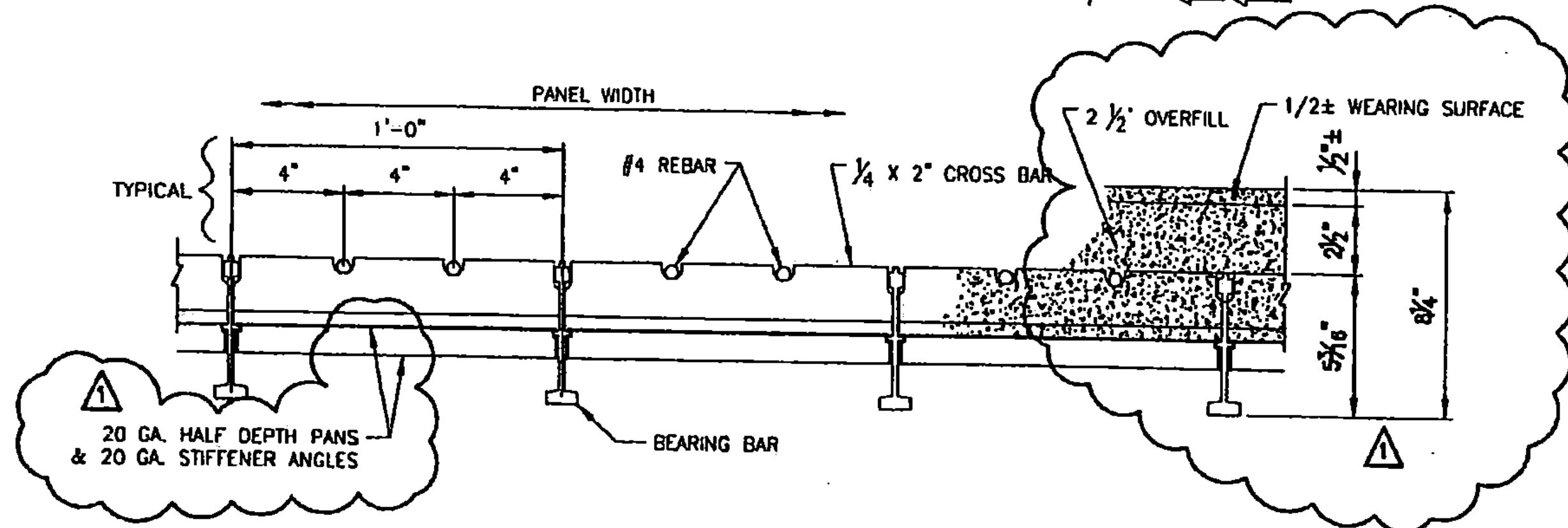


STANDARD PANEL TOLERANCES	
PANEL WIDTH	+0 -1/8
PANEL LENGTH	±1/4
SQUARENESS	±1/2
TRANSVERSE CAMBER (WIDTH)	.004 x WIDTH
LONGITUDINAL CAMBER (LENGTH)	.003 x LENGTH
SIDE BOW (SWEEP)	.025 x LENGTH
MAIN BAR VERTICALITY	.04 x HEIGHT
CROSS BAR VERTICALITY	.04 x HEIGHT

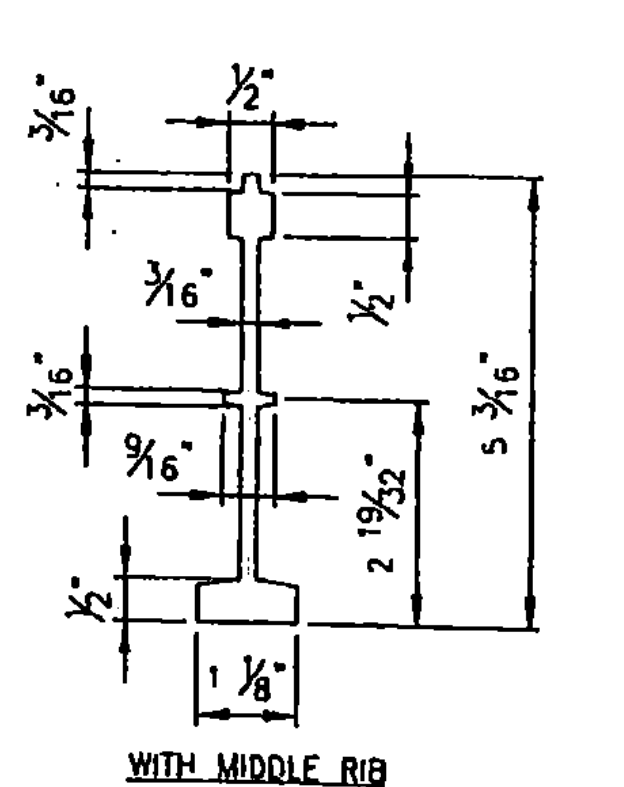
MATERIAL SPECIFICATIONS			
DESCRIPTION	ASTM	ALLOY / GR.	REMARKS
BEARING BARS, CROSS BARS, & TRIM PL'S	A 709	GRADE 50	GALVANIZED
REBAR	A 615	GR. 60	HOT DIPPED GALV'D
16 GA. FORM PANS 20 GA. FLAT PANS 20 GA. HAUNCH PANS 20 GA. STIFFENER ANGLES 20 GA. HAUNCH STRAPS	A 653	GR. 90 OR BETTER	GALV'D-FIELD INSTALLED OR PANS INSTALLED AFTER GALV
5/8" FULLY THREADED ROD	A 449		HOT DIPPED GALV'D
5/8" HVY HEX NUTS	A 563	GR. DH	HOT DIPPED TAPPED GALV'D OVERSIZE
TEK SCREWS			S-MD 8-18X1/2HWH #2 ZINC PLATED



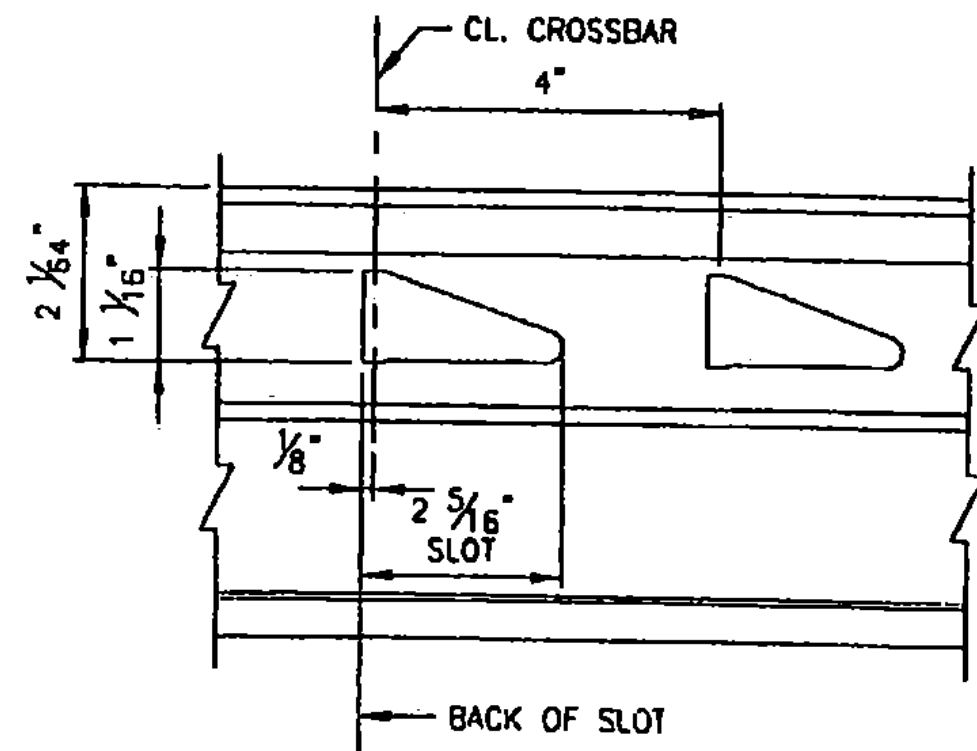
PROPOSED TYPICAL FLOORING DETAILS
(FORM PANS NOT SHOWN IN PLAN VIEW)

- GENERAL NOTES:
- MATERIAL AND WORKMANSHIP SHALL BE IN ACCORDANCE WITH THE VERMONT AGENCY OF TRANSPORTATION 2006 STANDARD SPECIFICATIONS FOR CONSTRUCTION INCLUDING ALL ADDITIONS AND REVISIONS AND THE CONTRACT DOCUMENTS.
 - SHOP WELDING SHALL BE PERFORMED BY THE GAS METAL ARC PROCESS (MIG) USING ER70S-3 FILLER METAL PER AWS D1.5 OF THE BRIDGE WELDING CODE.
 - AFTER FABRICATION, GRID PANELS SHALL BE HOT DIPPED GALVANIZED PER ASTM A123. DUE TO THE GALVANIZING PROCESS, PANELS MAY HAVE SOME DISTORTION AND SIDE SWEEP WHICH WILL REQUIRE ADJUSTMENT BY THE CONTRACTOR PRIOR TO INSTALLATION.
 - CUT ENDS OF REBAR TO BE TOUCHED UP AT THE GALVANIZER WITH COLD GALV. SPRAY, PER ASTM A 780.
 - PAY ITEM: 900.670 HALF-FILED GRID DECK
PAY AREA: 3,347 SQ. FT.

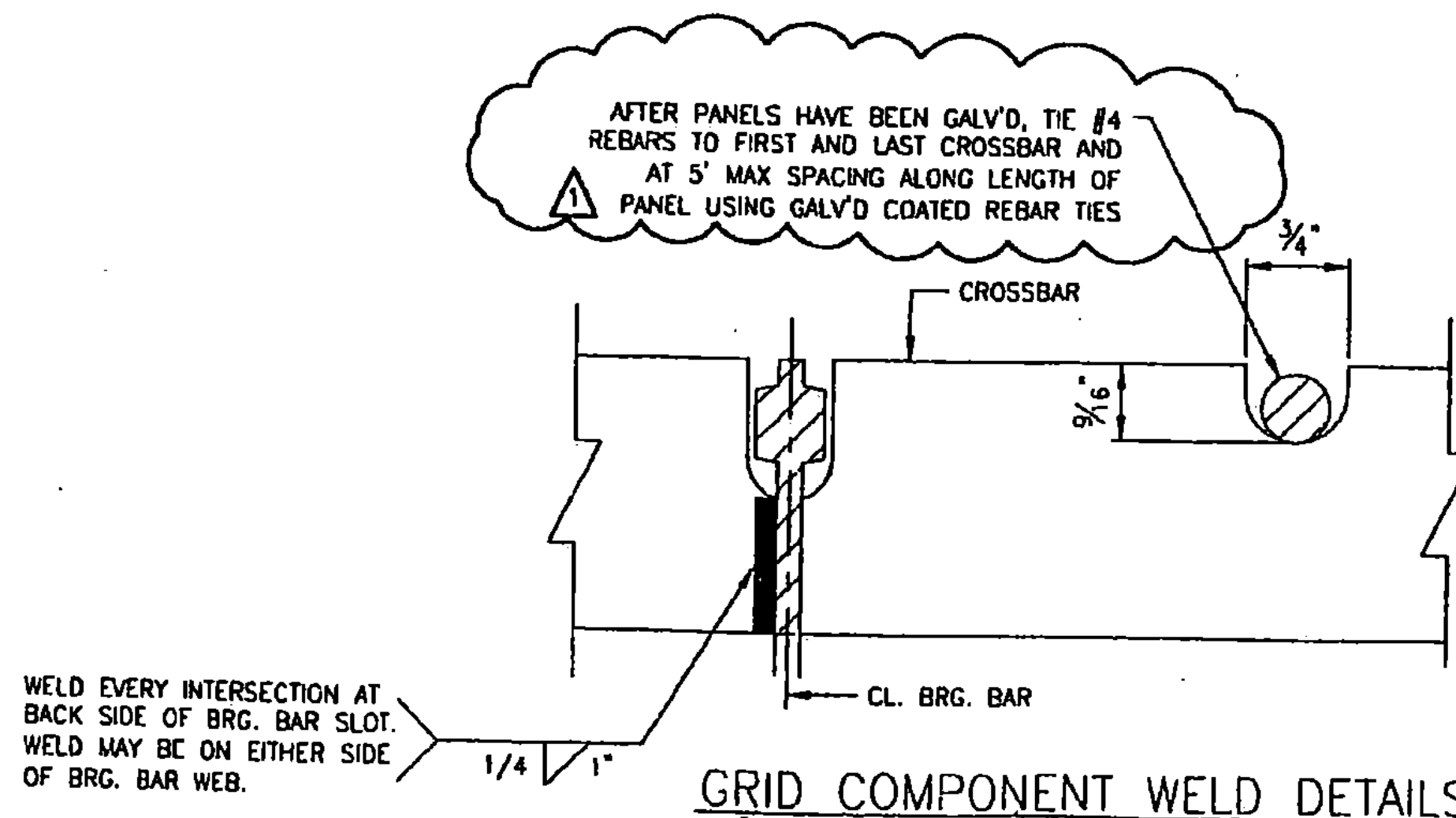
RECEIVED
OK'D BY 107 OK'D BY _____
JAN 17 2011
RESUBMIT _____ APPROVED ✓
BY KMH DATE 1/20/11



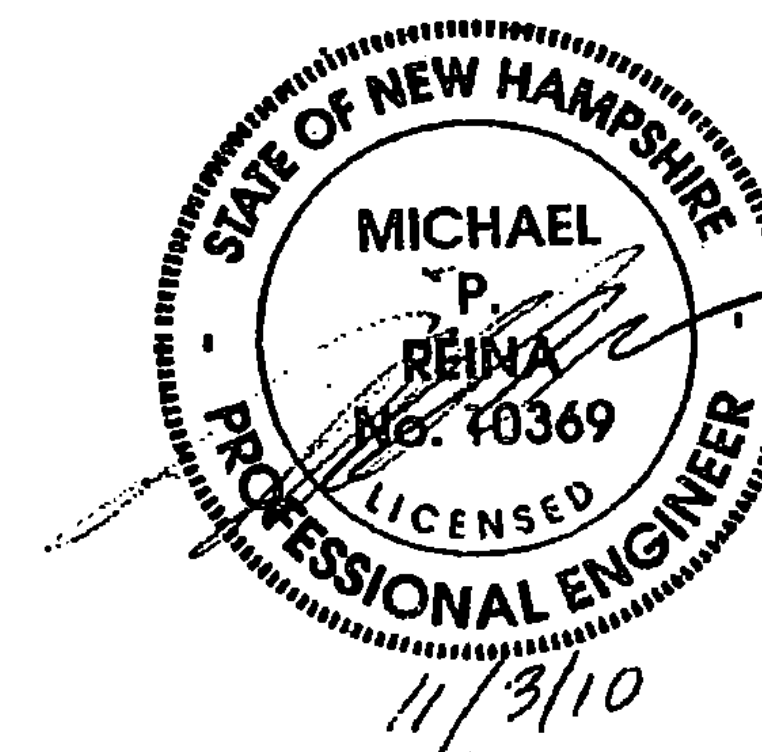
BEARING BAR PROFILES



BEARING BAR SLOT DETAIL



GRID COMPONENT WELD DETAILS



APPROVED:	DATE:
L. B. FOSTER CO.	
PITTSBURGH, PENNSYLVANIA 15220	
FOR: MILLER CONSTRUCTION	
STATE OF VERMONT AGENCY OF TRANSPORTATION	
TOWN OF BRIDGEWATER, COUNTY OF WINDSOR	
VT. ROUTE 100A, BR14 PROJ. NO. BRS 0149 (4)	
GENERAL NOTES AND TYPICAL DETAILS	
WFO	DATE 8/18/10
RLP	DATE 9/11/10
REV. NO.	1

180 PRE FAB
DECK PANELS