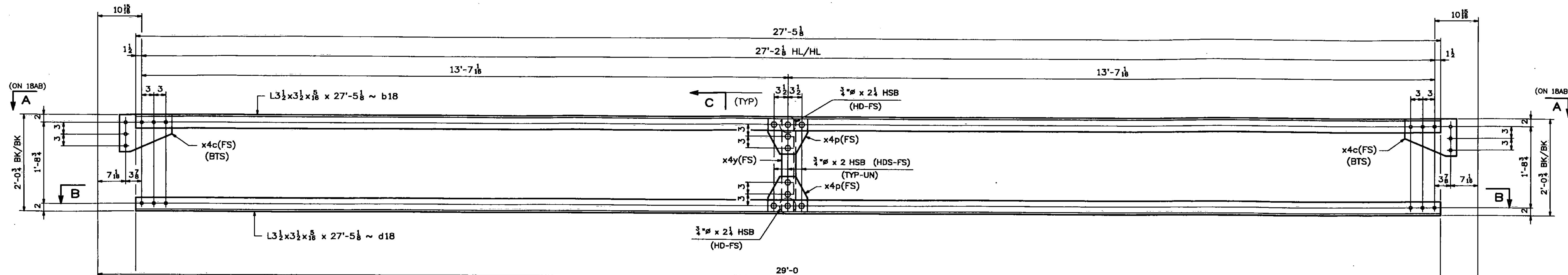
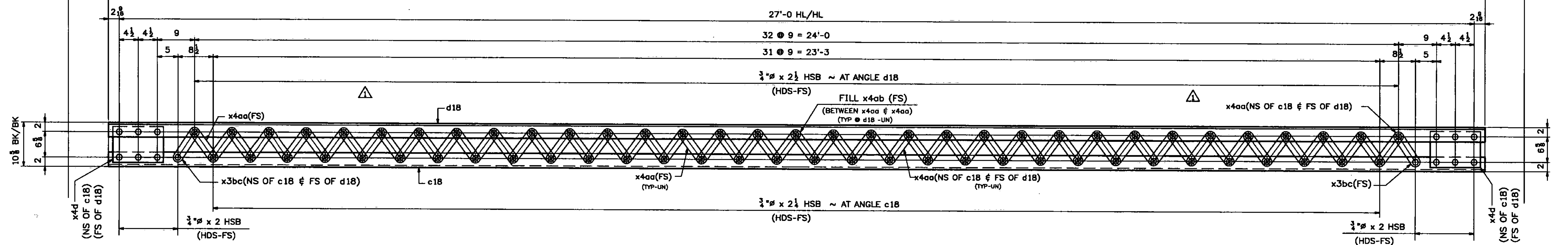


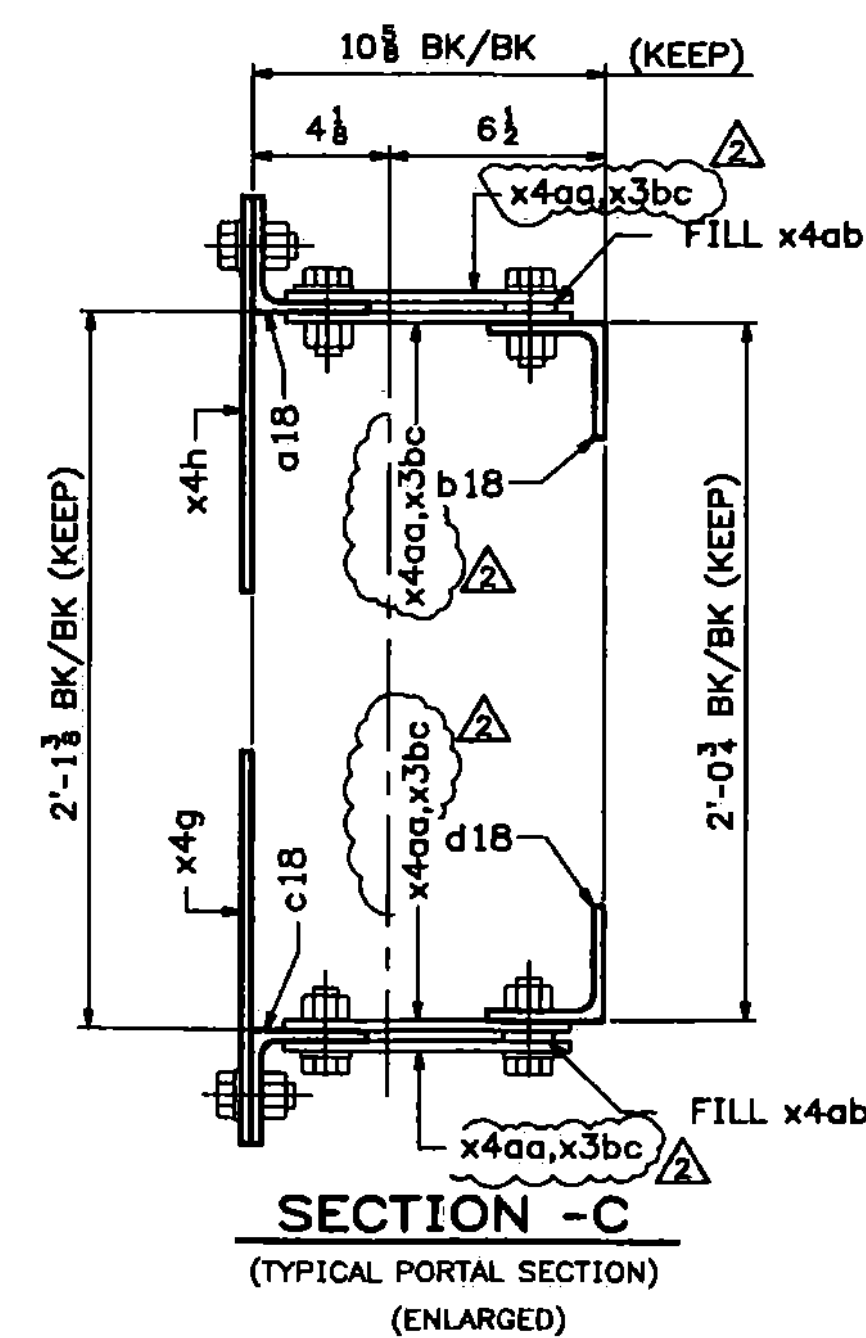
160 STRUCTURAL STEEL



REAR VIEW OF PORTAL  
(LOOKING TOWARDS THE CENTER OF SPAN)



BOTTOM SECTION B-B



SECTION - C  
(TYPICAL PORTAL SECTION)  
(ENLARGED)

Vermont Agency of Transportation

**RECEIVED**

CK'D BY TCF OK'D BY SSS

7:43 am, Apr 12, 2011

RESUBMIT \_\_\_\_\_ APPROVED X  
BY KMH DATE 4-12-11

ABM INFO	SHIP	BILL OF MATERIAL				JOB NO.	DRAWING NO.	REV.	
PAGE	LINE	MARK	QTY	MARK	MATERIAL	LENGTH	REMARKS	WT	PROCUREMENT NOTES
						FT	INCHES		
7	D		16	x4v	L 3 1/2 x 3 1/2 x 1/8	2	11		(GALVANIZED) M270-5012
7	E		2	x4w	L 3 1/2 x 3 1/2 x 1/8	2	18		(GALVANIZED) M270-5012
7	E		2	x4y	L 3 1/2 x 3 1/2 x 1/8	1	11 1/2		(GALVANIZED) M270-5012
7	L		256	x4aa	PL 1/8 x 2 1/2	0	10 1/2		(GALVANIZED)
7	L		132	x4ab	PL 1/8 x 2 1/2	0	2 1/2		(GALVANIZED)
10	C		280	1 # HSB		0	2		(GALVANIZED) S325-1
10	D		132	1 # HSB		0	2 1/2		(GALVANIZED) S325-1
10	E		132	1 # HSB		0	2 1/2		(GALVANIZED) S325-1
10	P		544	1 # HSB					(GALVANIZED) F336

ABM INFO	SHIP	BILL OF MATERIAL				JOB NO.	DRAWING NO.	REV.	
PAGE	LINE	MARK	QTY	MARK	MATERIAL	LENGTH	REMARKS	WT	PROCUREMENT NOTES
						FT	INCHES		
7	B		2	c18	L 3 1/2 x 3 1/2 x 1/8	27	5 1/2		(GALVANIZED) M270-5012
7	B		2	b18	L 3 1/2 x 3 1/2 x 1/8	27	5 1/2		(GALVANIZED) M270-5012
7	B		2	c18	L 3 1/2 x 3 1/2 x 1/8	27	5 1/2		(GALVANIZED) M270-5012
7	B		2	d18	L 3 1/2 x 3 1/2 x 1/8	27	5 1/2		(GALVANIZED) M270-5012
7	L		8	x3bc	PL 1/8 x 2 1/2	0	10		(GALVANIZED) M270-5012
7	F		2	x4a	PL 3/8 x 2 1/2	2	9 1/2		(GALVANIZED) BENT
7	F		2	x4b	PL 3/8 x 2 1/2	2	9 1/2		(GALVANIZED) BENT
7	G		4	x4c	PL 1/8 x 9 1/2	1	1		(GALVANIZED)
7	H		8	x4d	PL 1/8 x 9 1/2	1	0		(GALVANIZED)
7	J		4	x4g	PL 1/8 x 12	1	6 1/2		(GALVANIZED)
7	J		8	x4h	PL 1/8 x 12 1/2	1	5 1/2		(GALVANIZED)
7	J		4	x4k	PL 1/8 x 12	1	5 1/2		(GALVANIZED)
7	J		2	x4m	PL 1/8 x 12	2	0		(GALVANIZED)
7	K		2	x4n	PL 1/8 x 9	1	0		(GALVANIZED)
7	K		4	x4p	PL 1/8 x 9	0	10		(GALVANIZED)
7	C		4	x4s	L 3 1/2 x 3 1/2 x 1/8	3	1 1/2		(GALVANIZED) M270-5012

T2 - DENOTES MATERIAL SUBJECT TO CHARPY V-NOTCH TESTING

WORK THIS DWG. WITH DWG. 18AB.

REV.	DATE	REMARKS	DWN	CHK	APVL	SHOP
0						
03/24/11		REVISED AS NOTED	JM	PWR		
03/02/11		REVISED AS PER APPROVAL COMMENTS	JM	PWR		

MATERIAL:	SURFACE PREP. & PAINT:	HOLES:	SHOP BOLTS:
M270-50 (U.N.)	SEE DWG GN1	1/8"	AS NOTED

DESCRIPTION: PORTALS

**CASCO BAY STEEL STRUCTURES, INC.**  
75 SPRING HILL ROAD SACO, MAINE 04072  
PHONE (207) 282-7360 FAX. (207) 282-1179

STRUCTURE:	Vermont Route 100A	DRAWN:	DATE:
	Bridge No. 14	RB	10/7/10
	Bridgewater	CHKD:	DATE:
	County of Windsor	WJL	10/19/10

LOCATION:	BRIDGEWATER, VERMONT	JOB NO.	DWG NO.
PROJ NO.	BRS 0149(4)	454	18B
CUSTOMER:	VT AOT		REV. 1