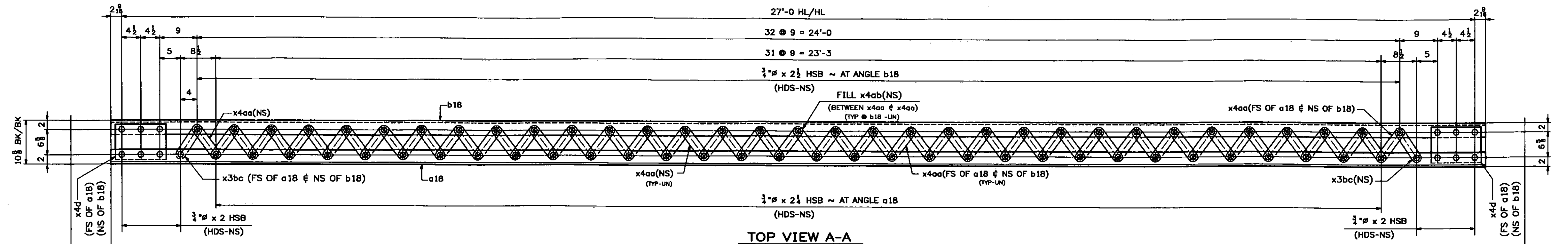
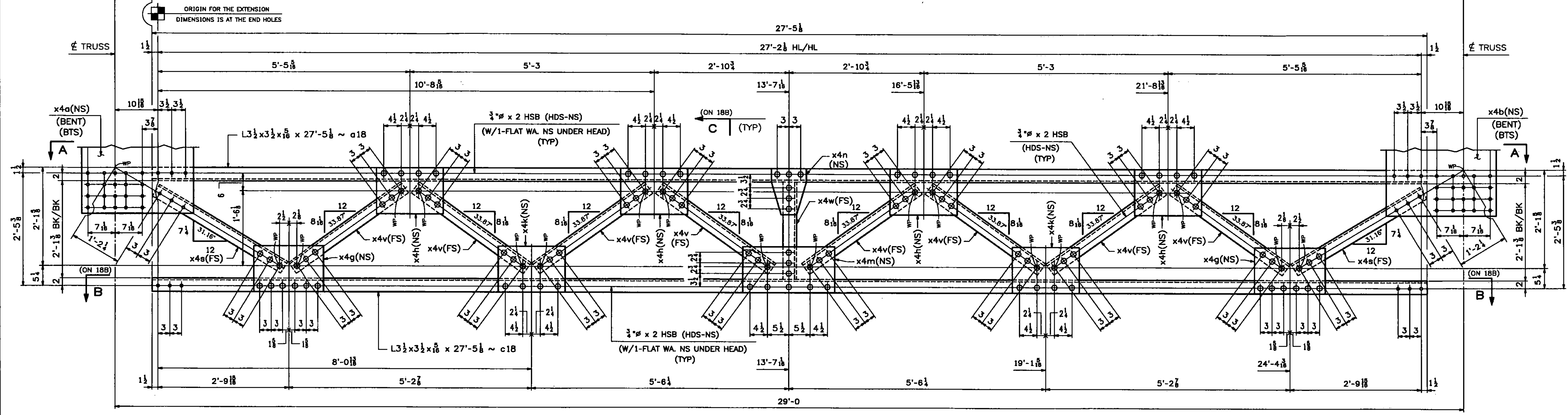


159 STRUCTURAL STEEL



TOP VIEW A-A



FRONT VIEW OF PORTAL
(LOOKING TOWARDS THE CENTER OF SPAN)

2 - PORTALS - 18PA1
(END PORTALS @ U1 & U1')

SHOP NOTE:
ALL STEEL FOR PORTAL ASSEMBLIES SHALL BE GALVANIZED

- NOTES:
1. FOR GENERAL NOTES SEE DWG. GN1.
 2. FOR STANDARD DETAILS SEE DWG. X4.
 3. ALL BOLTS SHALL BE FULLY TORQUED (UN).
 4. BTS - DENOTES BOLT TO SHIP OR SECURE FOR SHIPMENT.
 5. HDS - DENOTES BOLT HEADS.

Vermont Agency of Transportation
RECEIVED
CK'D BY TCF OK'D BY SSS
7:43 am, Apr 12, 2011
RESUBMIT _____ APPROVED X
BY KMH DATE 4-12-11

REV.	DATE	REMARKS	DWN	CHK	APVL	SHOP
03/24/11		REVISED BEVELS & ANGLES	JM	PWR		
03/02/11		REVISED AS PER APPROVAL COMMENTS	JM	PWR		
0						

MATERIAL: M270-50 (U.N.)	SURFACE PREP. & PAINT: SEE DWG GN1	HOLES: 1/8"	SHOP BOLTS: AS NOTED
DESCRIPTION: PORTALS			
CASCO BAY STEEL STRUCTURES, INC.			
75 SPRING HILL ROAD		SACO, MAINE 04072	
PHONE (207) 282-7360		FAX. (207) 282-1179	
STRUCTURE: Vermont Route 100A Bridge No. 14 Bridgewater County of Windor	DRAWN: RB	DATE: 10/7/10	
	CHKD: WJL	DATE: 10/19/10	
LOCATION: BRIDGEWATER, VERMONT	JOB NO. 454	DWG NO. 18AB	
PROJ NO. BRS 0149(4)	CUSTOMER: VT AOT	REV. 1	

WORK THIS DWG. WITH DWG. 18B.