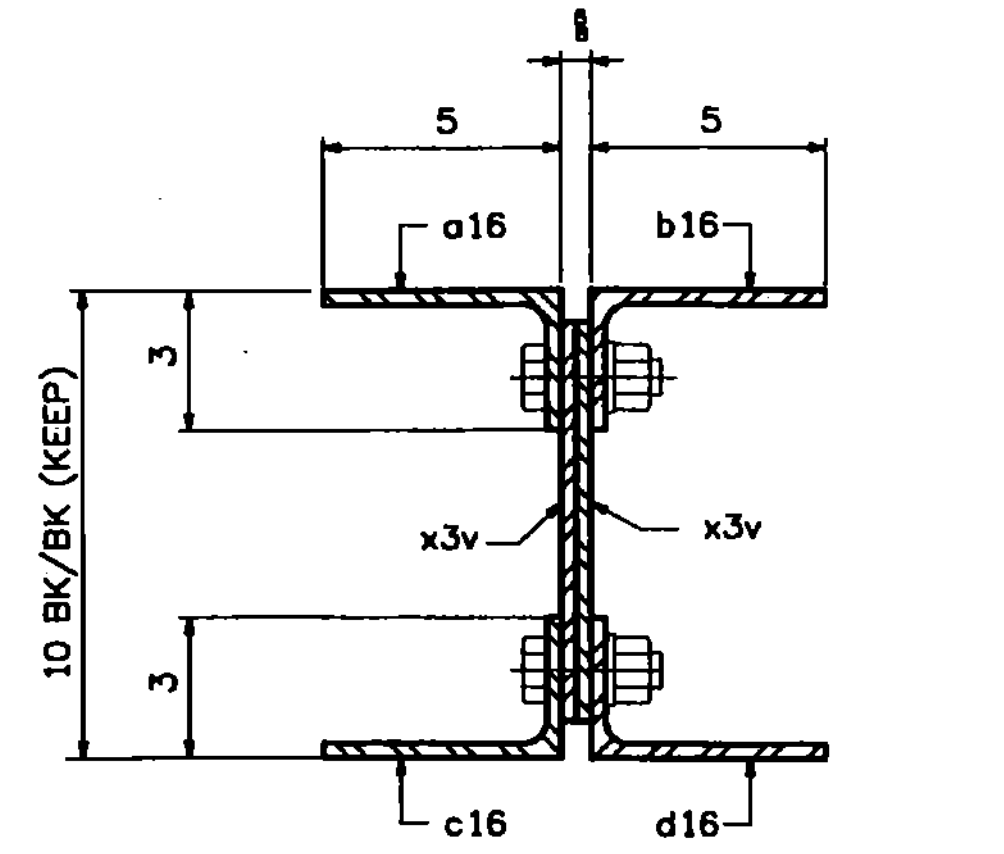


157 STRUCTURAL STEEL



SECTION -C  
(ON 16AB) (ENLARGED)  
(TYPICAL STRUT SECTION SHOWN AT CENTER SPAN OF STRUT)

ASM INFO		SHIP		BILL OF MATERIAL				JOB NO.	DRAWING NO.	REV.
PAGE	LINE	MARK	QTY	MARK	MATERIAL	LENGTH	REMARKS	WT	PROCUREMENT NOTES	
						FT	INCHES			
		16SB1	2		SWAY STRUTS			149.2		
6	B	2	a16	L	5x3x $\frac{1}{8}$	27	6	(GALVANIZED) M270-5012		
6	B	2	b16	L	5x3x $\frac{1}{8}$	27	6	(GALVANIZED) M270-5012		
6	B	2	c16	L	5x3x $\frac{1}{8}$	27	6	(GALVANIZED) M270-5012		
6	B	2	d16	L	5x3x $\frac{1}{8}$	27	6	(GALVANIZED) M270-5012		
6	L	4	x3a	PL	$\frac{1}{8}$ x29	2	8 $\frac{1}{2}$	(GALVANIZED)		
6	M	4	x3b	PL	$\frac{1}{8}$ x14 $\frac{1}{2}$	1	7 $\frac{1}{2}$	(GALVANIZED)		
6	N	4	x3d	PL	$\frac{1}{8}$ x10	0	11 $\frac{1}{2}$	(GALVANIZED)		
6	D	4	x3f	PL	$\frac{1}{8}$ x9	0	9 $\frac{1}{2}$	(GALVANIZED)		
6	F	4	x3h	PL	$\frac{1}{8}$ x18 $\frac{1}{8}$	1	8 $\frac{1}{2}$	(GALVANIZED)		
6	P	12	x3t	PL	$\frac{1}{8}$ x2 $\frac{1}{2}$	0	9 $\frac{1}{8}$	(GALVANIZED)		
6	P	104	x3v	PL	$\frac{1}{8}$ x2 $\frac{1}{2}$	0	9 $\frac{1}{8}$	(GALVANIZED)		
6	P	12	x3w	PL	$\frac{1}{8}$ x2 $\frac{1}{2}$	0	2 $\frac{1}{2}$	(GALVANIZED)		
10	E	194		1	# HSB	0	2 $\frac{1}{2}$	(GALVANIZED) A325-1		
10	P	194		1	# HSW			(GALVANIZED) F436		
		16SB2	2		SWAY STRUTS			150.6		
6	B	2	a16	L	5x3x $\frac{1}{8}$	27	6	(GALVANIZED) M270-5012		
6	B	2	b16	L	5x3x $\frac{1}{8}$	27	6	(GALVANIZED) M270-5012		
6	B	2	c16	L	5x3x $\frac{1}{8}$	27	6	(GALVANIZED) M270-5012		
6	B	2	d16	L	5x3x $\frac{1}{8}$	27	6	(GALVANIZED) M270-5012		
6	L	4	x3ba	PL	$\frac{1}{8}$ x29	2	8 $\frac{1}{2}$	(GALVANIZED)		
6	M	4	x3c	PL	$\frac{1}{8}$ x14 $\frac{1}{2}$	2	2	(GALVANIZED)		
6	N	4	x3d	PL	$\frac{1}{8}$ x10	0	11 $\frac{1}{2}$	(GALVANIZED)		
6	D	4	x3f	PL	$\frac{1}{8}$ x9	0	9 $\frac{1}{2}$	(GALVANIZED)		
6	F	4	x3h	PL	$\frac{1}{8}$ x18 $\frac{1}{8}$	1	8 $\frac{1}{2}$	(GALVANIZED)		
6	P	12	x3t	PL	$\frac{1}{8}$ x2 $\frac{1}{2}$	0	9 $\frac{1}{8}$	(GALVANIZED)		
6	P	104	x3v	PL	$\frac{1}{8}$ x2 $\frac{1}{2}$	0	9 $\frac{1}{8}$	(GALVANIZED)		
6	P	12	x3w	PL	$\frac{1}{8}$ x2 $\frac{1}{2}$	0	2 $\frac{1}{2}$	(GALVANIZED)		
10	E	194		1	# HSB	0	2 $\frac{1}{2}$	(GALVANIZED) A325-1		
10	P	194		1	# HSW			(GALVANIZED) F436		

T2 - DENOTES MATERIAL SUBJECT TO CHARPY V-NOTCH TESTING

Vermont Agency of Transportation

**RECEIVED**

CK'D BY TCF OK'D BY SSS

7:43 am, Apr 12, 2011

RESUBMIT APPROVED X  
BY KMH DATE 4-12-11

MATERIAL: M270-50 (U.N.)	SURFACE PREP. & PAINT: SEE DWG GN1	HOLES: $\frac{1}{8}$ Ø	SHOP BOLTS: AS NOTED
DESCRIPTION: SWAY BRACE TOP STRUTS			
CASCO BAY STEEL STRUCTURES, INC. 75 SPRING HILL ROAD SACO, MAINE 04072 PHONE (207) 282-7360 FAX. (207) 282-1179			
STRUCTURE: Vermont Route 100A Bridge No. 14 Bridgewater County of Windsor	DRAWN: RB	DATE: 10/5/10	CHKD: WJL
DATE: 10/19/10	LOCATION: BRIDGEWATER, VERMONT	JOB NO. 454	DWG NO. 16B
REV. DATE	REMARKS	DWN	CHK
APVL	SHOP	CUSTOMER: VT AOT	REV. <input checked="" type="checkbox"/>

WORK THIS DWG. WITH DWG. 16AB.