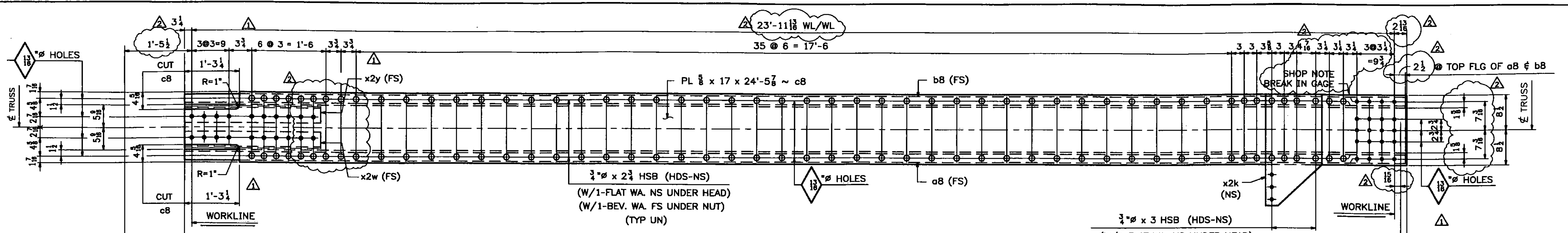
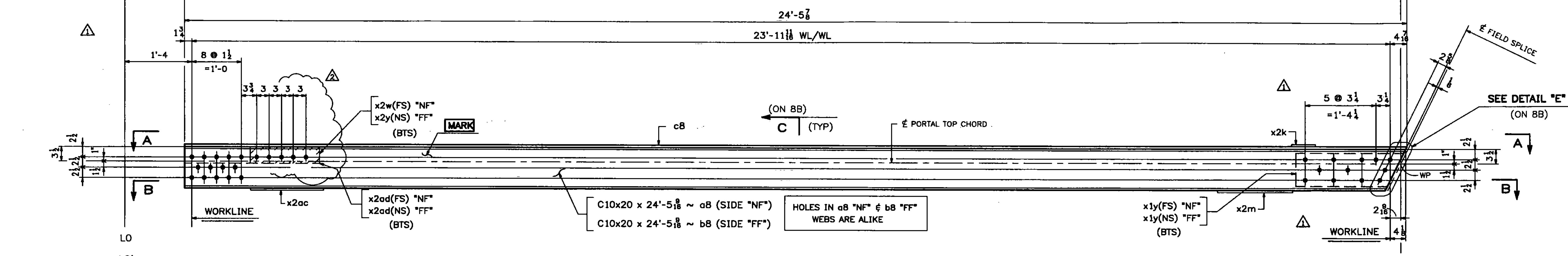


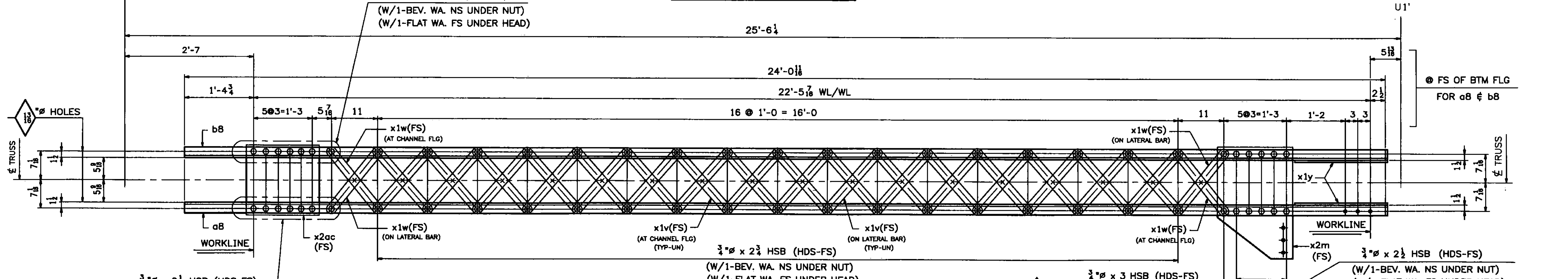
145 STRUCTURAL
STEEL



TOP VIEW A-A



SIDE ELEVATION VIEW



BOTTOM SECTION B-B

Vermont Agency of Transportation
RECEIVED
CK'D BY TCF OK'D BY SSS

7:43 am, Apr 12, 2011
RESUBMIT BY KMH APPROVED DATE 4-12-11

ONE - PORTAL TOP CHORD - 8D1W (LO-U1 WEST)
ONE - PORTAL TOP CHORD - 8D9E (LO-U1 EAST)
ALIKE EXCEPT FOR MARK

SHOP NOTE:
ALL STEEL FOR PORTAL TOP CHORD ASSEMBLIES SHALL BE GALVANIZED

- NOTES:
1. FOR GENERAL NOTES SEE DWG. GN1.
 2. FOR STANDARD DETAILS SEE DWG. X1 & X2.
 3. "NF" - DENOTES NEAR FACE OF ASSY.
 4. "FF" - DENOTES FAR FACE OF ASSY.
 5. "BF" - DENOTES BOTH FACES OF ASSEMBLY.
 6. ALL BOLTS SHALL BE FULLY TORQUED (UN).
 7. BTS - DENOTES BOLT TO SHIP OR SECURE FOR SHIPMENT.
 8. HDS - DENOTES BOLT HEADS.

REV.	DATE	REMARKS	DWN	CHK	APVL	SHOP
1	03/23/11	REVISED AS PER APPROVAL COMMENTS	JM	PWR		
2	03/02/11	REVISED AS PER APPROVAL COMMENTS	JM	PWR		
0						

MATERIAL: M270-50 (U.N.)	SURFACE PREP. & PAINT: SEE DWG GN1	HOLES: 1/8" (U.N.)	SHOP BOLTS: AS NOTED
DESCRIPTION: PORTAL TOP CHORD 8D1W & 8D9E			
CASCO BAY STEEL STRUCTURES, INC. 75 SPRING HILL ROAD SACO, MAINE 04072 PHONE (207) 282-7360 FAX. (207) 282-1179			
STRUCTURE: Vermont Route 100A Bridge No. 14 Bridgewater County of Windsor	DRAWN: RB	DATE: 9/30/10	
	CHKD: WJL	DATE: 10/19/10	
LOCATION: BRIDGEWATER, VERMONT	JOB NO. 454	DWG NO. 8AB	
PROJ NO. BRS 0149(4)	CUSTOMER: VT AOT	REV. 454	

WORK THIS DWG. WITH DWG. 8B.