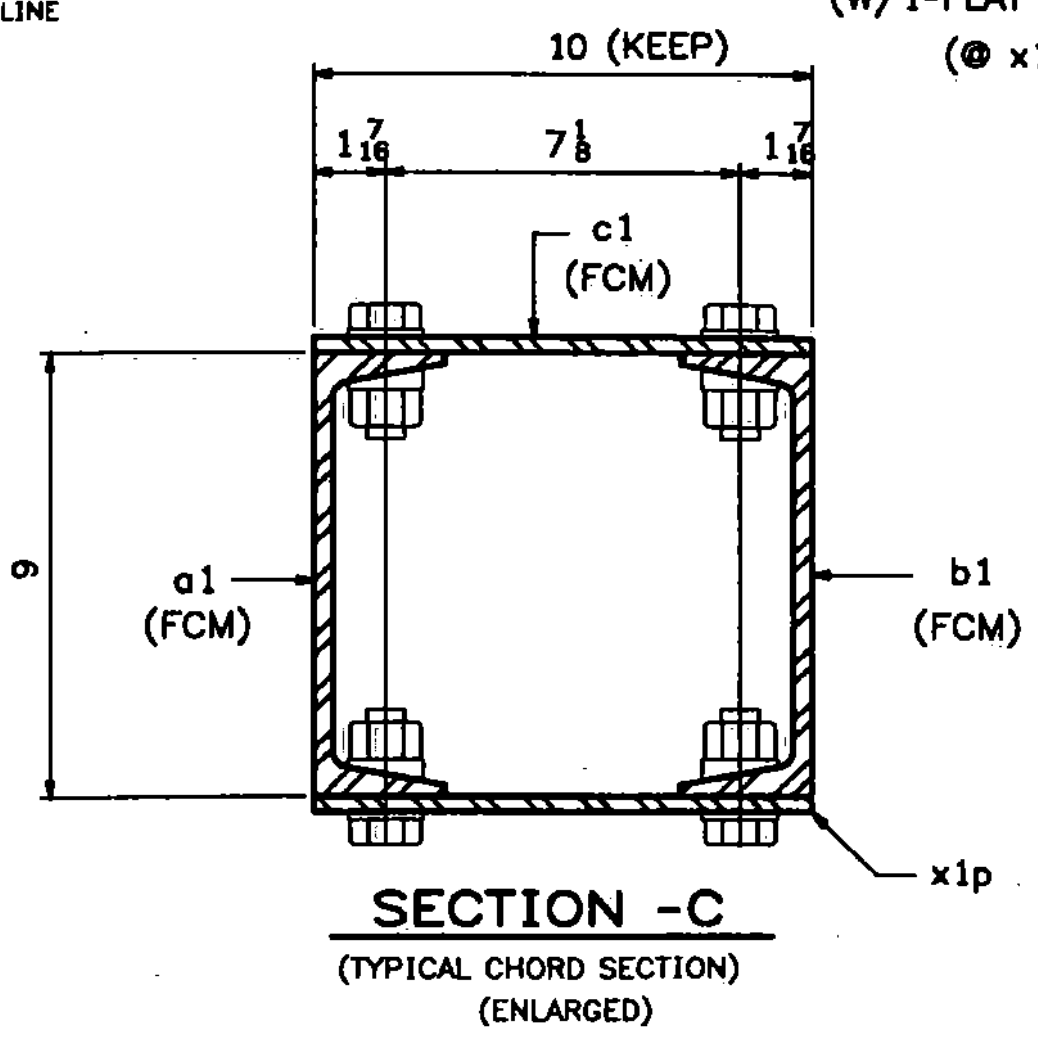
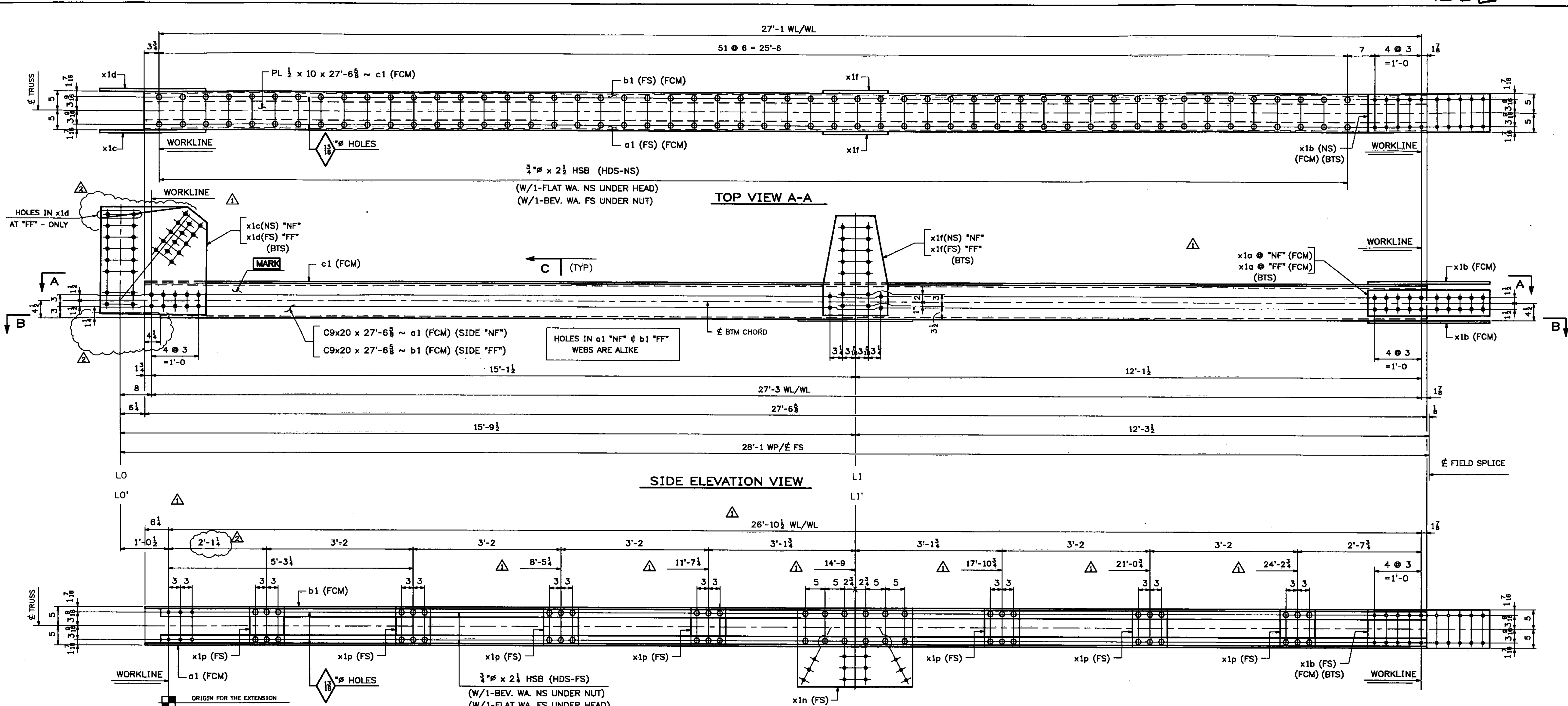


130 STRUCTURAL  
STEEL



ONE - BOTTOM CHORD - 1BC1W  
(L0'-L2 WEST)  
ALIKE EXCEPT FOR MARK

ONE - BOTTOM CHORD - 1BC3E  
(L0'-L2 EAST)

- NOTES:
1. FOR GENERAL NOTES SEE DWG. GN1.
  2. FOR STANDARD DETAILS SEE DWG. X1.
  3. "NF" - DENOTES NEAR FACE OF ASSY.
  4. "FF" - DENOTES FAR FACE OF ASSY.
  5. "BF" - DENOTES BOTH FACES OF ASSEMBLY.
  6. FCM - DENOTES FRACTURE CRITICAL MATERIAL.
  7. ALL BOLTS SHALL BE FULLY TORQUED (UN).
  8. BTS - DENOTES BOLT TO SHIP OR SECURE FOR SHIPMENT.
  9. HDS - DENOTES BOLT HEADS.

SHOP NOTE:  
ALL STEEL FOR BOTTOM CHORD ASSEMBLIES SHALL BE GALVANIZED

Vermont Agency of Transportation  
**RECEIVED**  
CK'D BY TCF OK'D BY SSS  
7:43 am, Apr 12, 2011  
RESUBMIT APPROVED X  
BY KMH DATE 4-12-11 WJG. 1B.

03/23/11	REVISED AS PER APPROVAL COMMENTS	JM	PWR		
02/28/11	REVISED AS PER APPROVAL COMMENTS	JM	PWR		
0					
REV. DATE	REMARKS	DWN	CHK	APVL	SHOP
MATERIAL:	SURFACE PREP. & PAINT:	HOLES:		SHOP BOLTS:	
M270-50 (U.N.)	SEE DWG GN1	1/8" (U.N.)		AS NOTED	
DESCRIPTION: BOTTOM CHORD 1BC1W & 1BC3E					
<b>CASCO BAY STEEL STRUCTURES, INC.</b>					
75 SPRING HILL ROAD			SACO, MAINE 04072		
PHONE (207) 282-7360			FAX. (207) 282-1179		
STRUCTURE: Vermont Route 100A					
Bridge No. 14					
Bridgewater					
County of Windsor					
DRAWN: RB				DATE: 9/21/10	
CHKD: WJL				DATE: 10/15/10	
LOCATION: BRIDGEWATER, VERMONT				JOB NO. DWG NO.	
PROJ NO. BRS 0149(4)				454 1AB	
CUSTOMER: VT AOT				REV. A	