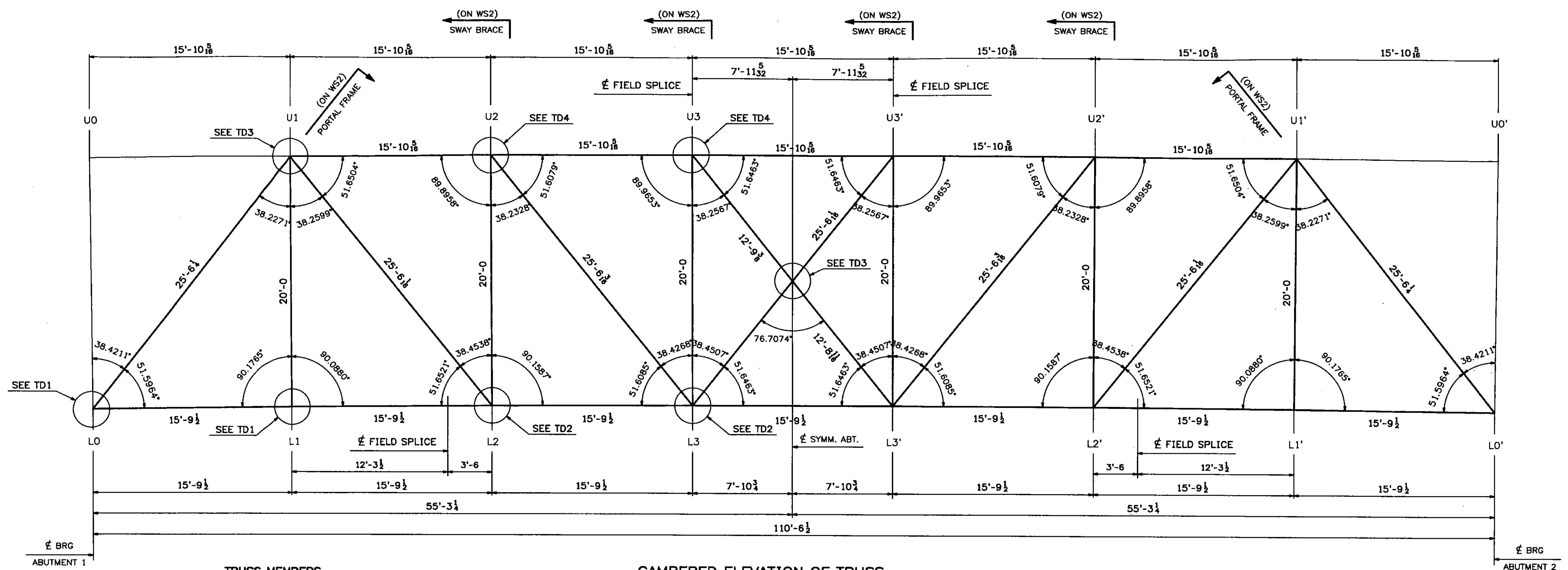


122 STRUCTURAL
STEEL



TRUSS MEMBERS

| | | |
|------------------|---------|---------------------|
| BOTTOM CHORDS | L0-L2 | 2~C9x20 (FCM) |
| | L2-L2' | 1~PL 1/2 x 10 (FCM) |
| | L2'-L0' | |
| TOP CHORDS | U1-U3 | 2~C10x20 |
| | U3-U3' | 1~PL 3/8 x 17 |
| | U3'-U1' | |
| VERTICALS | L0 | W10x49 |
| | L0' | |
| | L1-U1 | |
| | L2-U2 | |
| | L3-U3 | |
| | L3'-U3' | |
| | L2'-U2' | |
| L1'-U1' | | |
| DIAGONALS | L2-U1 | 2~WT4x15.5 |
| | L2'-U1' | |
| | L3-U2 | |
| | L3'-U2' | |
| | L3-U3 | |
| PORTAL TOP CHORD | L0-U1 | 2~C10x20 |
| | L0'-U1' | 1~PL 3/8 x 17 |

CAMBERED ELEVATION OF TRUSS
(LOOKING WEST)

Vermont Agency of Transportation
RECEIVED
CK'D BY TCF OK'D BY SSS
7:43 am, Apr 12, 2011
RESUBMIT APPROVED X
BY KMH DATE 4-12-11

**** NOTE ****
THE PURPOSE OF THIS DRAWING IS TO COORDINATE GEOMETRIC CONTROL INFORMATION. THIS DWG IS SUBMITTED FOR INFORMATION ONLY AND IS NOT INTENDED FOR SHOP FABRICATION.

- NOTES
1. ALL DIMENSIONS ARE TAKEN ALONG THE CENTERLINE OF MEMBER, WITH CORRECTIONS MADE FOR GRADE & DL CAMBER (UN).
 2. TRANSVERSE DIMENSIONS ARE IN A HORIZ. PLANE (UN).
 3. ALL ANGLES ARE BASED ON THE CAMBERED SHAPE.
 4. FOR LAYOUTS SEE "TD" DRAWINGS.
 5. FCM - DENOTES FRACTURE CRITICAL MATERIAL.

| 02/18/11 | REVISED DIAGONALS AS PER APPROVAL | JM | PWR | | | |
|------------------------------------------|-----------------------------------|------------------------|--------|---------------|-------------|-------------|
| 10/14 | REVISED VERTICALS AT L0,L0' | RB | WJL | | | |
| 0 | | | | | | |
| REV. | DATE | REMARKS | DWN | CHK | APVL | SHOP |
| MATERIAL: | | SURFACE PREP. & PAINT: | HOLES: | | SHOP BOLTS: | |
| DESCRIPTION: TRUSS ELEVATION - CAMBERED | | | | | | |
| CASCO BAY STEEL STRUCTURES, INC. | | | | | | |
| 75 SPRING HILL ROAD SACO, MAINE 04072 | | | | | | |
| PHONE (207) 282-7360 FAX. (207) 282-1179 | | | | | | |
| STRUCTURE: Vermont Route 100A | | DRAWN: RB | | DATE: 9/7/10 | | |
| Bridge No. 14 | | CHKD: WMJ | | DATE: 9/27/10 | | |
| Bridgewater | | | | | | |
| County of Windsor | | | | | | |
| LOCATION: BRIDGEWATER, VERMONT | | | | JOB NO. 454 | | DWG NO. WS1 |
| PROJ NO. BRS 0149(4) | | | | | | REV. 1 |
| CUSTOMER: VT AOT | | | | | | |