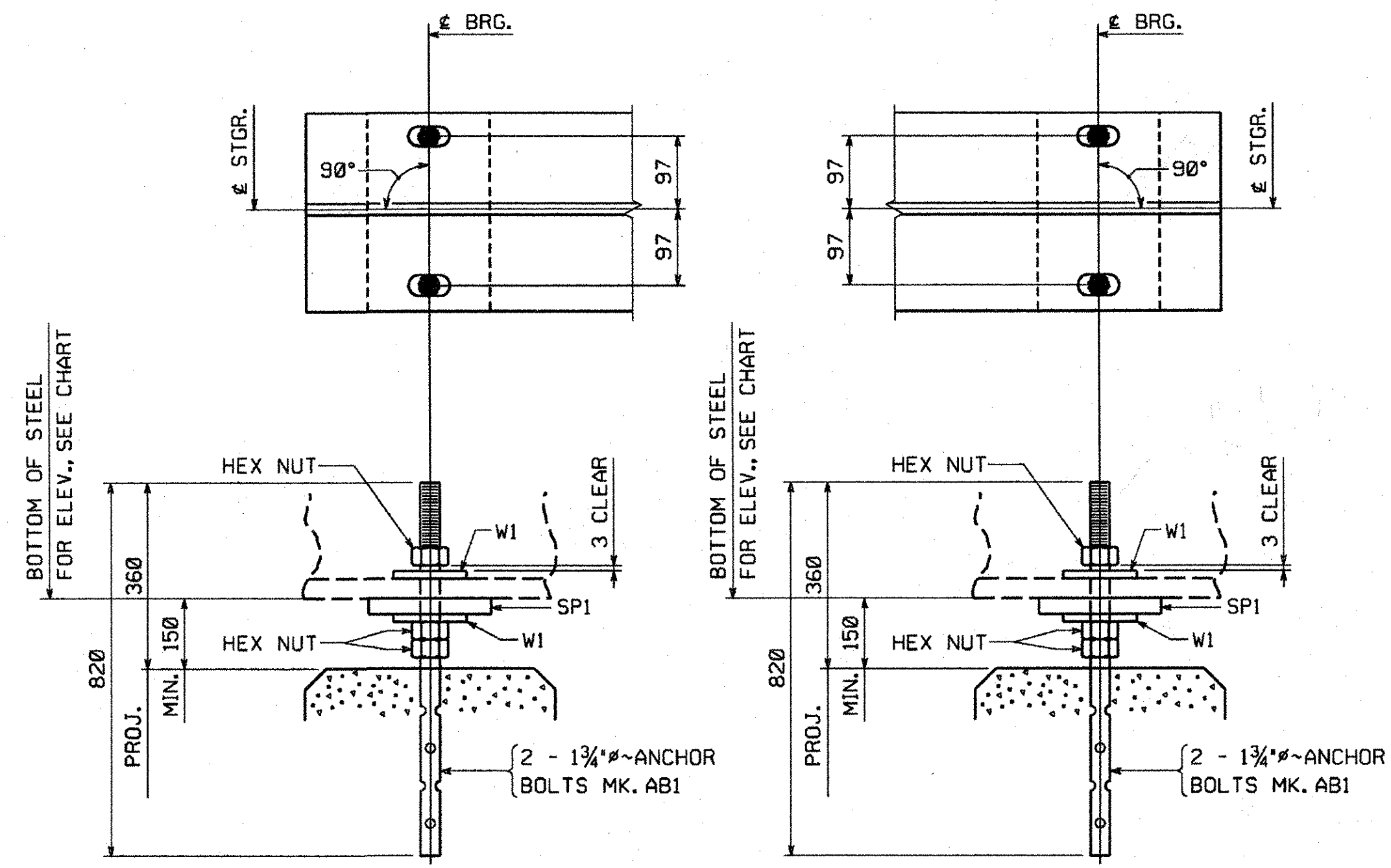
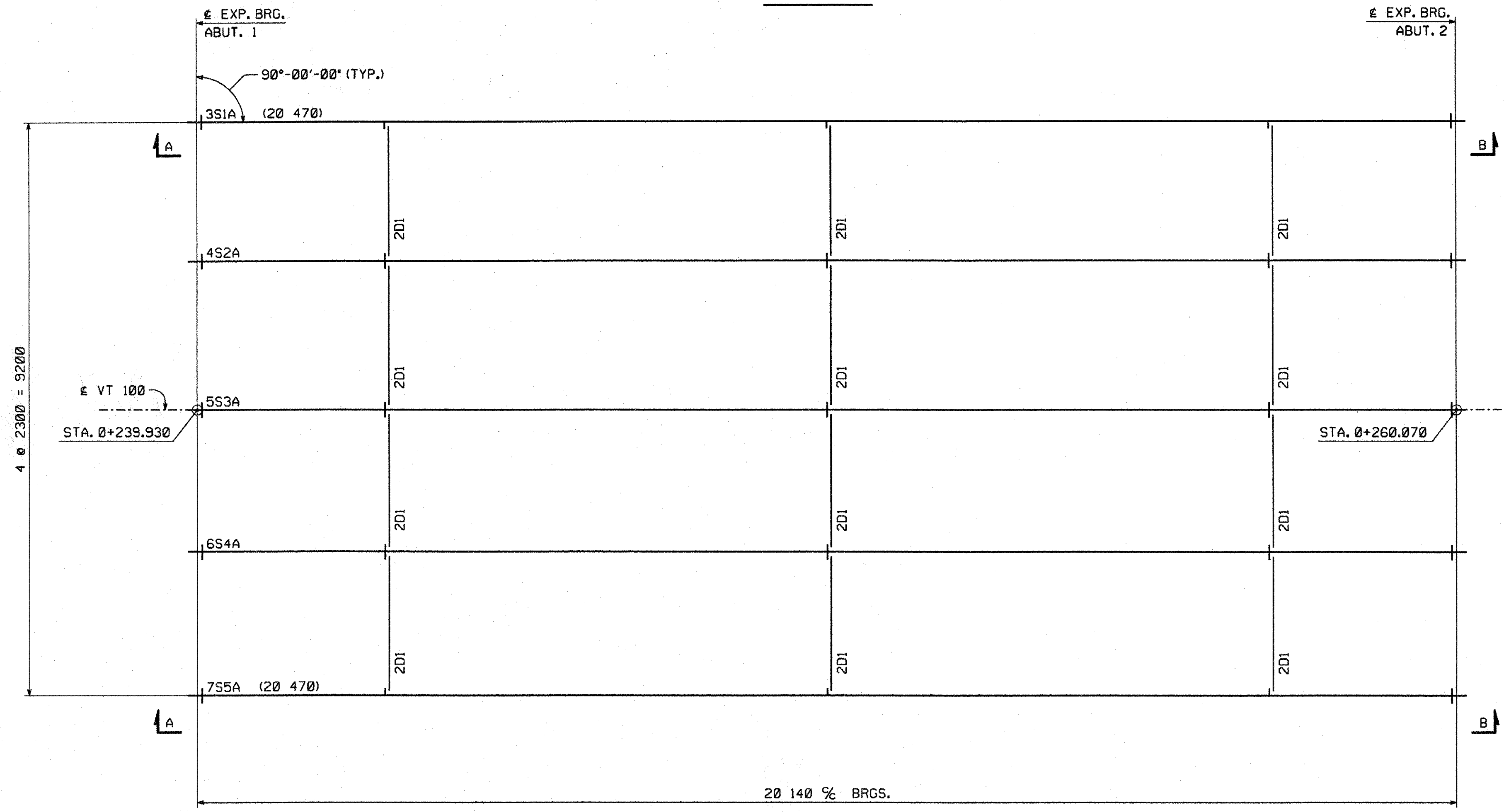


METRIC

1. ALL DIMENSIONS ARE IN MILLIMETERS UNLESS OTHERWISE NOTED.
2. ALL WEIGHTS ARE IN KILOGRAMS.

FED. ROAD DIST. NO.	STATE	FED. AID PROJ. NO.
	VT	
SHIPPING PIECE MARK	WEIGHT EA (KG)	
S1A	4,715	
S2A	4,745	
S3A	4,745	
S4A	4,746	
S5A	4,716	

SPAN - 1



SECTION A

STRINGER LINE	ELEVATION @ ABUT. 1
S1	217.551
S2	217.632
S3	217.712
S4	217.793
S5	217.873

SECTION B

STRINGER LINE	ELEVATION @ ABUT. 2
S1	217.137
S2	217.195
S3	217.252
S4	217.310
S5	217.367

ERECTION FRAMING AND ANCHOR BOLT PLAN

FIELD BOLT SUMMARY

(2% ADDITIONAL BOLTS ADDED + 3 EA. FOR TESTING) *nuts and washers*
 AASHTO M164 TYPE 3 BOLTS WITH HVY. HEX HEAD AND
 AASHTO M291 GRADE DH3 HVY. HEX NUT *4 per diameter*
 125 - 7/8" HIGH STRENGTH BOLTS x 0'-2 1/2"
 247 HARD, FLAT AASHTO M293 WEATHERING WASHERS FOR 7/8" H. S. BOLTS (RCT)
 (RCT) INDICATES ROTATIONAL CAPACITY TESTED BOLTS. DO NOT MIX NUTS, BOLTS AND WASHERS FROM DIFFERENT CONTAINERS UNLESS ALL NUTS, BOLTS AND WASHERS HAVE THE SAME LOT NUMBER.

NOTES:

NO CREDIT WILL BE ALLOWED FOR WORK PERFORMED BY OTHERS IN REPLACING OR CORRECTING MATERIALS OR WORKMANSHIP COVERED BY THIS DRAWING UNLESS EXPRESSLY AUTHORIZED BY HIGH STEEL STRUCTURES, INC.
 ALL FIELD CONNECTIONS TO BE MADE WITH 7/8" HIGH STRENGTH (AASHTO M164, TYPE 3) BOLTS (U.N.).
 ALL DIMENSIONS ARE GIVEN HORIZONTALLY (U.N.).
 DIMENSIONS GIVEN THUS: (20 470) ARE THE SHIPPING LENGTHS OUT TO OUT OF FASCIA STRINGERS.
 HIGH STEEL STRUCTURES, INC. DOES NOT SUPPLY SHEAR STUDS AND HOLES OR BOLTS FOR FLEMMING BRACKETS.
 WORK THIS DRAWING WITH DRAWING E2.
 NOTICE: WEIGHTS OF MEMBERS LISTED ON THESE DRAWINGS ARE ESTIMATED WEIGHTS AND ACTUAL WEIGHTS WILL VARY. HIGH STEEL STRUCTURES, INC. WILL NOT BE RESPONSIBLE FOR ANY ERECTION PROCEDURES, SHIPPING PROCEDURES, ETC. DEVELOPED USING ESTIMATED WEIGHTS AS SHOWN.
 FOR BOLTED CONNECTIONS WITH OVERSIZED HOLES, A WASHER IS TO BE USED UNDER BOTH THE HEAD AND THE NUT.
 THE SHIPPING MARKS SHOWN CONSIST OF THE PREFIX INDICATING THE SHEET NUMBER UPON WHICH THE PIECE IS DETAILED ALONG WITH THE SHIPPING PIECE MARK.
 ALL ELEVATIONS AND STATIONS ARE GIVEN IN METERS.
 ELEVATIONS ARE GIVEN TO BOTTOM OF STRINGER FLANGE.
 ANCHOR BOLT SETTINGS MUST BE EXACT IN EVERY DETAIL IN ACCORDANCE WITH THIS DRAWING.
 ANCHOR BOLTS ARE FURNISHED BY HIGH STEEL STRUCTURES, INC. AND SET BY OTHERS.

ERECTOR NOTE: ALL BOLTS MUST BE LOCATED IN ACCORDANCE WITH THIS LIST OF FIELD CONNECTIONS. HIGH STEEL STRUCTURES WILL NOT BE RESPONSIBLE FOR FURNISHING ADDITIONAL BOLTS OR FOR ANY OTHER RELATED COSTS OR DAMAGES RESULTING FROM IMPROPER LOCATIONS OF BOLTS

LIST OF FIELD CONNECTIONS

LINE	ACTUAL NUMBE R REQ'D	BOLT DIAM.	BOLT LENGTH	BOLTS PER CONN.	NO. OF CONN.	GRIP	THICKNESS OF PIECES JOINED			PIECES CONNECTED AND REMARKS
1	120	7/8"	2 1/2"	5	24	30.3	14.3	11	5	INTERMEDIATE DIAPH. TO CONN. PLATE W/2 WASHERS
2										
3										

RECEIVED
 OK'D BY *WAS* OK'D BY *JTR*
 FEB 14 2006
 RESUBMIT APPROVED *A. Nelt*
 BY *Wjg Sgd* DATE *3/1/06*

NO.	REVISION	BY	DATE
 HIGH STEEL STRUCTURES, INC. 1770 Hemstead Road Lancaster, PA 17605-0008 Phone 717/299-528 A Division of High Industries, Inc.			
ERECTION FRAMING AND ANCHOR BOLT PLAN VERMONT ROUTE 100 OVER DOWSVILLE BROOK VERMONT ROUTE 100 STA. 0+239.930 TO STA. 0+260.070 TOWN OF DUXBURY, WASHINGTON COUNTY, VERMONT STATE OF VERMONT AGENCY OF TRANSPORTATION			
STATE CONTRACT OR REF. NO. BRIDGE NO. 107, DUXBURY STP 013-4 (24)			
CONTRACTOR AUSTIN CONSTRUCTION, INC.			
IN CHARGE: BRITIGAN (IH) MADE: MGK CHR'D. BY: WBW DATE: 2/6/06			
CONTRACT NUMBER: VT-05124-1 DRAWING NUMBER: E1 OF E2			