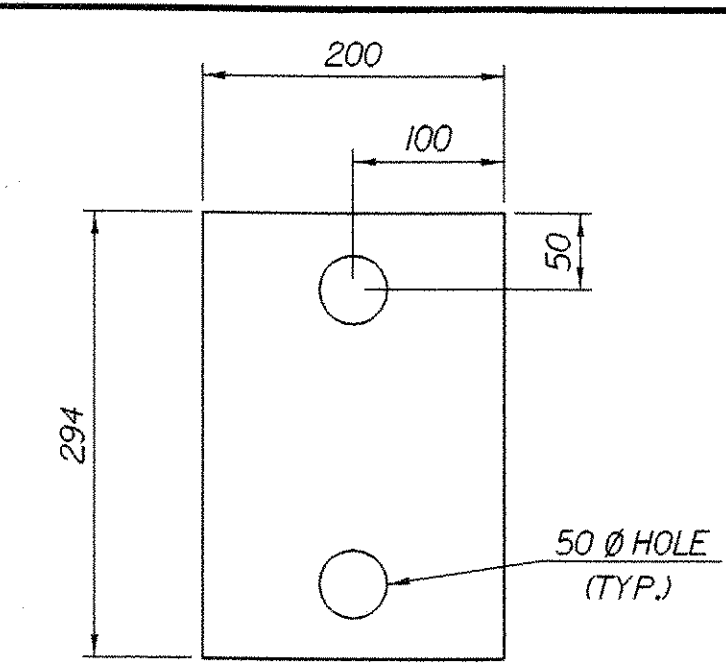


PLAN VIEW - END OF STEEL MEMBER AT ABUTMENT
SCALE = 1:5



SOLE PLATE DETAIL
SCALE = 1:5

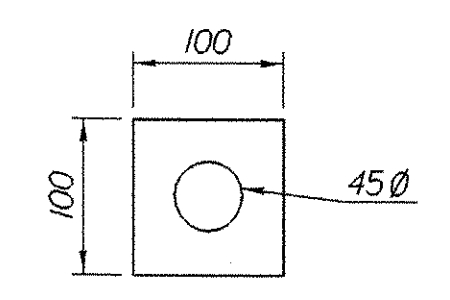
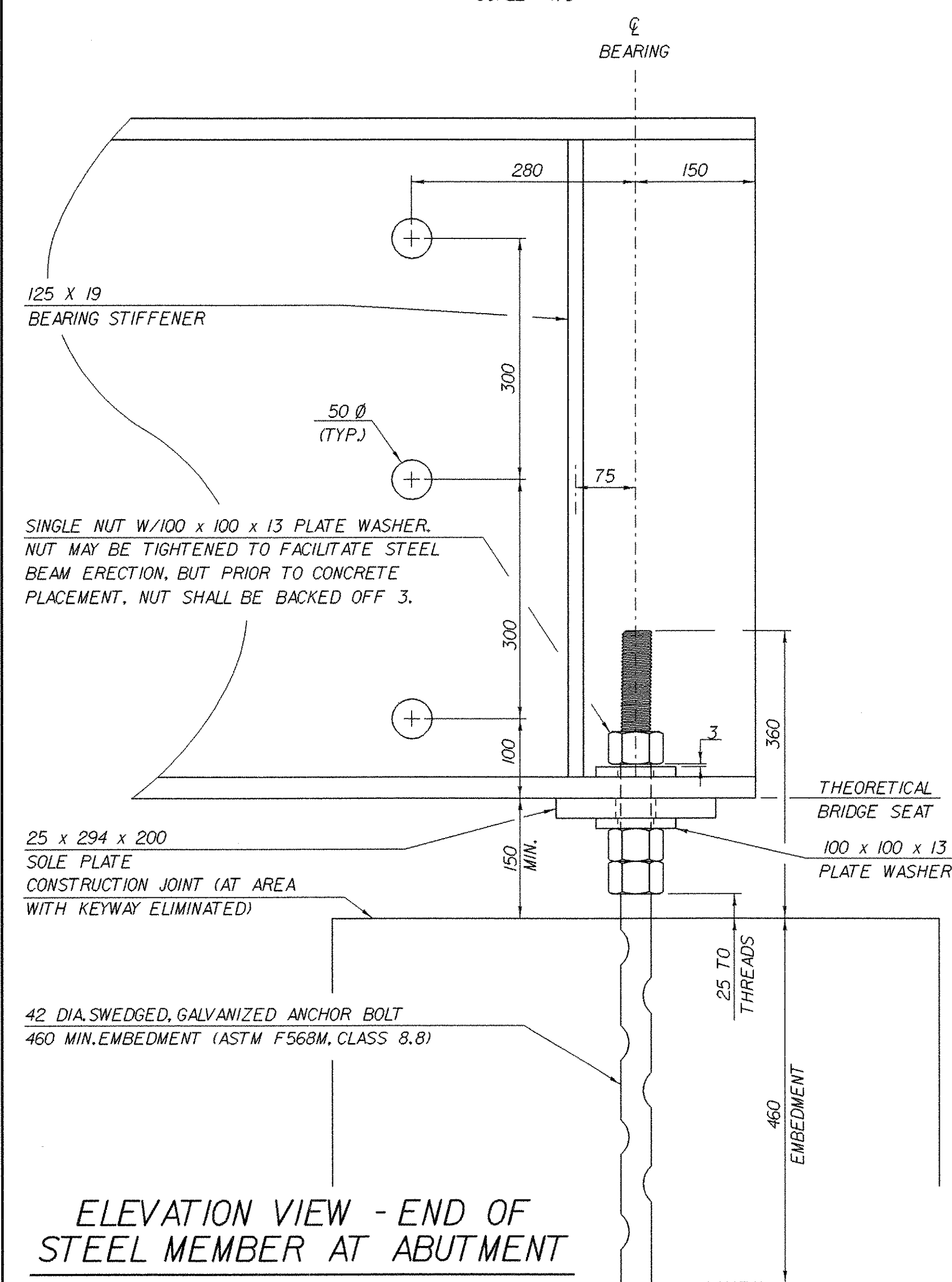
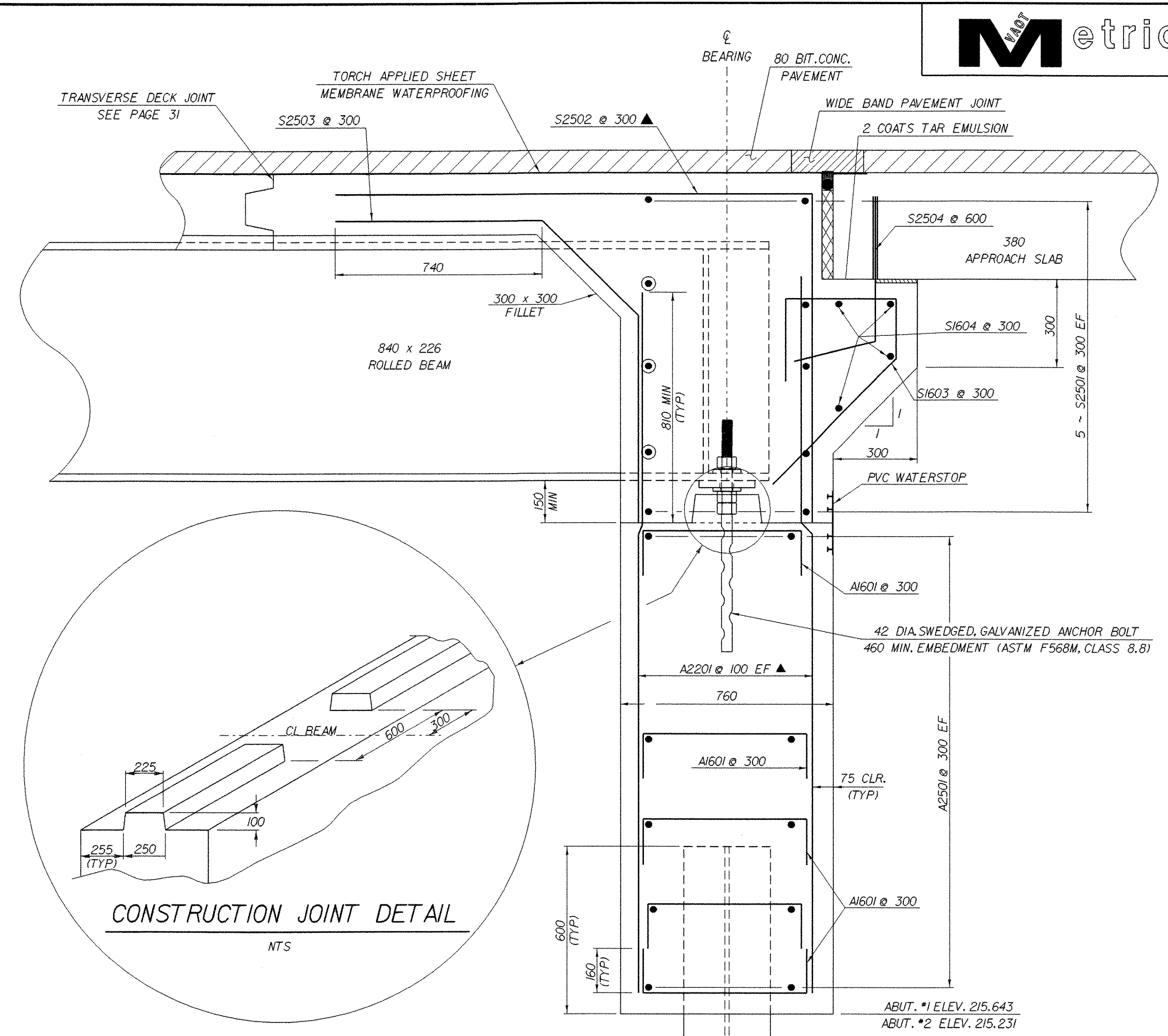


PLATE WASHER DETAIL
SCALE = 1:5

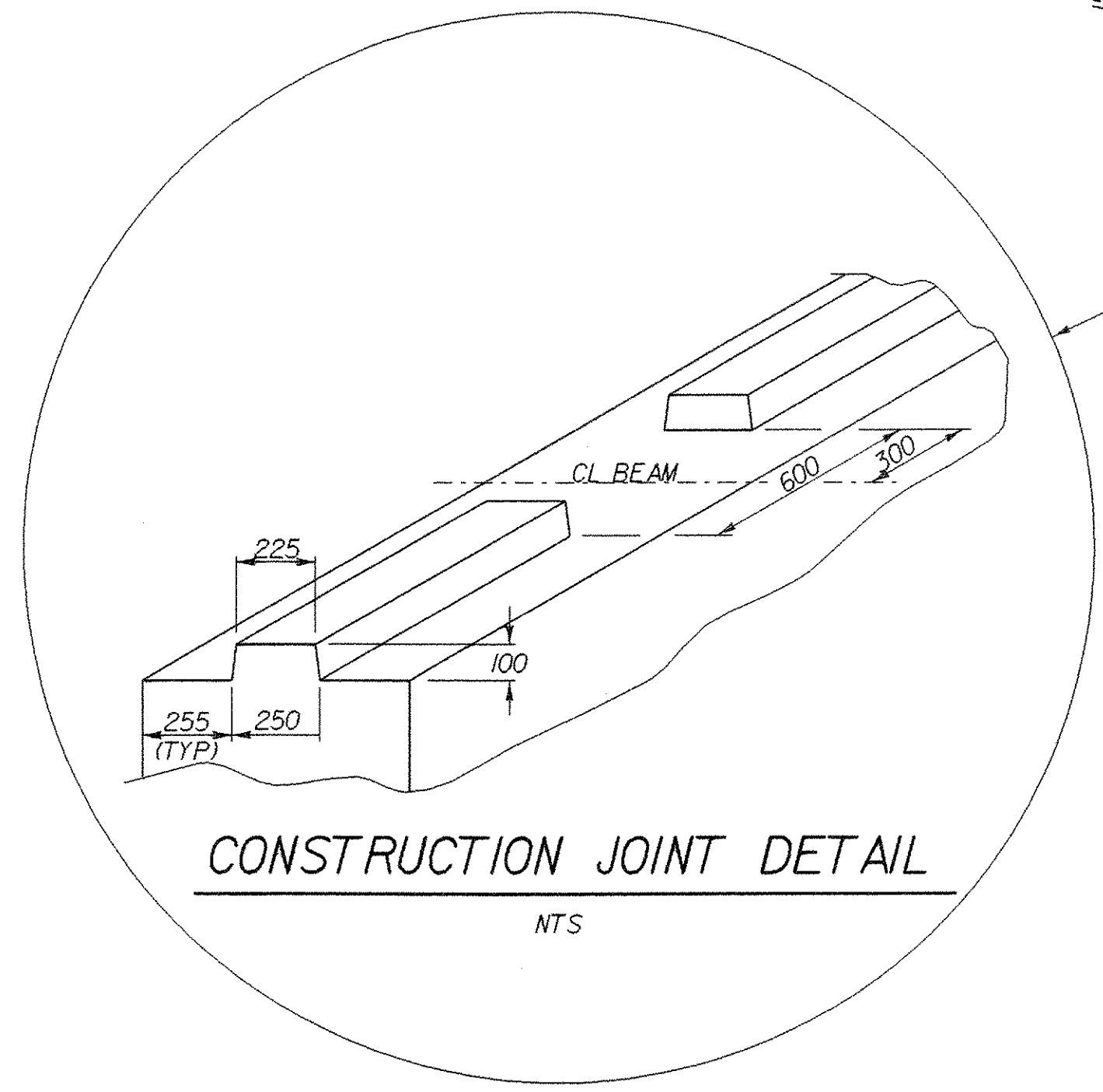
- NOTES:**
- 1) THE SOLE PLATES, ANCHOR BOLTS, WASHERS AND NUTS SHALL BE PAID FOR UNDER ITEM 531.10 "BEARING DEVICE ASSEMBLY" AND SHALL CONFORM TO SECTIONS 531 AND 731 OF VAOT STANDARD SPECIFICATIONS.
 - 2) THE SOLE PLATES, ANCHOR BOLTS, WASHERS AND NUTS SHALL BE GALVANIZED OR METALIZED PER VAOT STANDARD SPECIFICATIONS 531.04 AND 506.15 (b) AND (c).
 - 3) ALL STEEL IN BEARING DEVICE ASSEMBLY SHALL BE AASHTO M270 GRADE 50, EXCEPT ANCHOR BOLTS, WHICH SHALL BE ASTM F568M, CLASS 8.8.



ELEVATION VIEW - END OF STEEL MEMBER AT ABUTMENT
SCALE = 1:5



BRIDGE END DETAIL & ABUTMENT TYPICAL SECTION
SCALE = 1:10



CONSTRUCTION JOINT DETAIL
NTS

THEORETICAL BRIDGE SEAT CHART

	ABUTMENT # 1	ABUTMENT # 2
BEAM 1	217.551	217.137
BEAM 2	217.632	217.195
BEAM 3	217.712	217.252
BEAM 4	217.793	217.310
BEAM 5	217.873	217.367

ABUTMENT TYPICAL SECTION

- NOTE:**
- NF = NEAR FACE
 - FF = FAR FACE
 - EF = EACH FACE
 - ▲ = CUT TO FIT IN FIELD
 - 75 CLR. UNLESS OTHERWISE SPECIFIED ON THE PLANS.

PROJECT NAME:	DUXBURY	PLOT DATE:	20-OCT-2005
PROJECT NUMBER:	STP 013-4(24)	DRAWN BY:	R. VANHAMBURG
FILE NAME:	/str5/86e059/se059sub.dgn	CHECKED BY:	T. SUMNER
PROJECT LEADER:	C. KELLER	SHEET	38 OF 62
DESIGNED BY:	W. FARLEY		
se059ots.j			