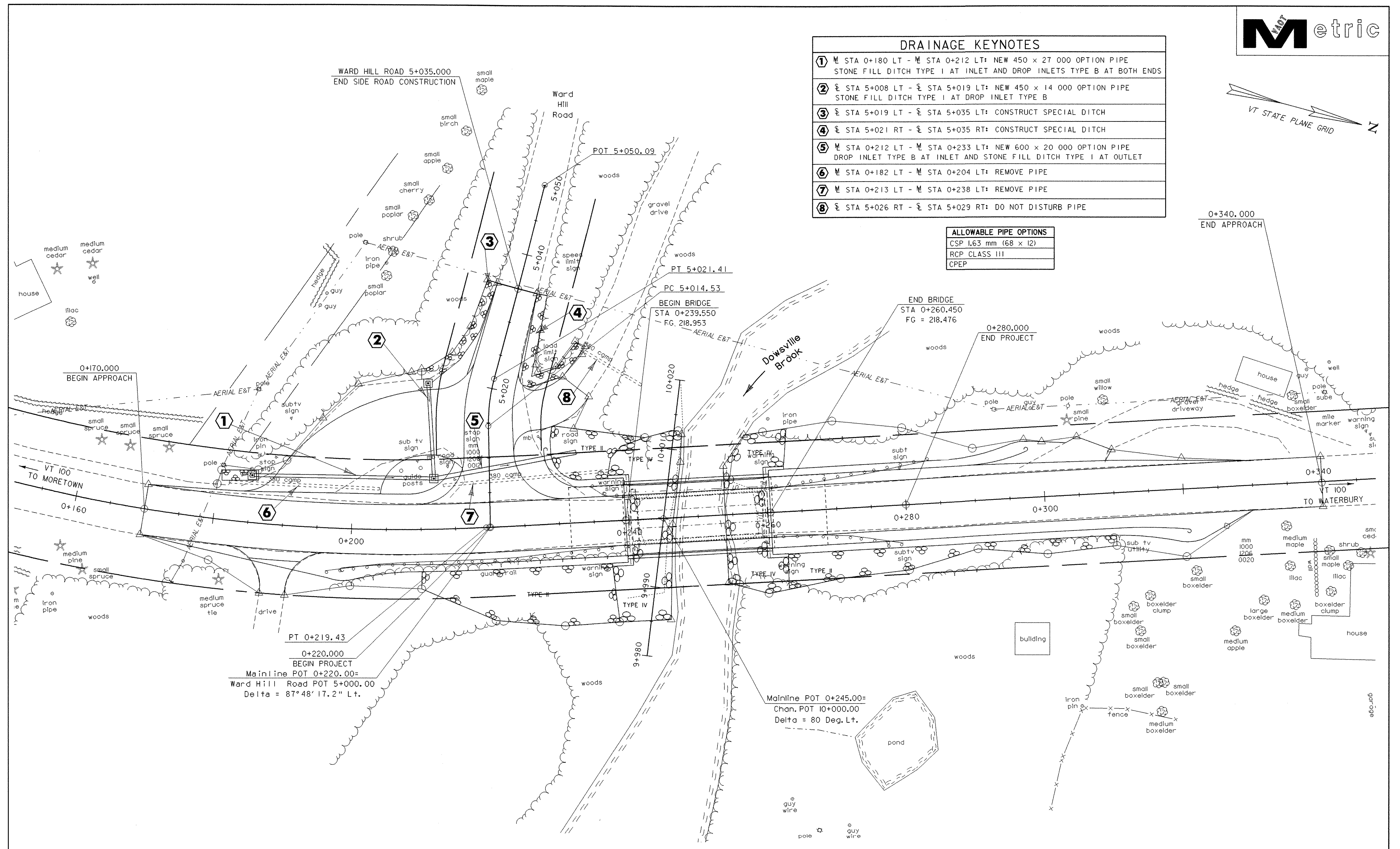


DRAINAGE KEYNOTES	
①	M STA 0+180 LT - M STA 0+212 LT: NEW 450 x 27 000 OPTION PIPE STONE FILL DITCH TYPE I AT INLET AND DROP INLETS TYPE B AT BOTH ENDS
②	E STA 5+008 LT - E STA 5+019 LT: NEW 450 x 14 000 OPTION PIPE STONE FILL DITCH TYPE I AT DROP INLET TYPE B
③	E STA 5+019 LT - E STA 5+035 LT: CONSTRUCT SPECIAL DITCH
④	E STA 5+021 RT - E STA 5+035 RT: CONSTRUCT SPECIAL DITCH
⑤	M STA 0+212 LT - M STA 0+233 LT: NEW 600 x 20 000 OPTION PIPE DROP INLET TYPE B AT INLET AND STONE FILL DITCH TYPE I AT OUTLET
⑥	M STA 0+182 LT - M STA 0+204 LT: REMOVE PIPE
⑦	M STA 0+213 LT - M STA 0+238 LT: REMOVE PIPE
⑧	E STA 5+026 RT - E STA 5+029 RT: DO NOT DISTURB PIPE

ALLOWABLE PIPE OPTIONS
CSP 1.63 mm (68 x 12)
RCP CLASS III
CPEP



PT 0+219.43  
 0+220.000  
 BEGIN PROJECT  
 Mainline POT 0+220.00=  
 Ward Hill Road POT 5+000.00  
 Delta = 87°48'17.2" Lt.

Mainline POT 0+245.00=  
 Chan. POT 10+000.00  
 Delta = 80 Deg. Lt.

### DRAINAGE SHEET

PROJECT NAME: DUXBURY	PLOT DATE: 20-OCT-2005
PROJECT NUMBER: STP 013-4(24)	DRAWN BY: J. GILMORE
FILE NAME: /str5/86e059/se059drn.dgn	CHECKED BY: T. SUMNER
PROJECT LEADER: C. KELLER	SHEET 29 OF 62
DESIGNED BY: B. NYQUIST	

