

BRIDGE RAILING - NETC 2 RAIL  
 0+236.470 RT - 0+263.530 RT  
 0+236.470 LT - 0+263.530 LT

GUARDRAIL APPROACH SECTION, NETC RAIL  
 0+228.850 - 0+236.470 LT.  
 0+229.445 - 0+236.470 RT.  
 0+263.530 - 0+271.150 LT.  
 0+263.530 - 0+271.150 RT.

STEEL BEAM GUARDRAIL  
 0+209.800 - 0+228.850 RT.  
 WARD 5+011.025 RT. - M.L. 0+229.554 LT.  
 0+271.150 - 0+286.390 LT.  
 0+271.150 - 0+309.250 RT.

STONE FILL FOR SLOPE STABILIZATION (TYPE III)  
 0+210 RT - 0+238 RT  
 0+263 RT - 0+310 RT

CONSTRUCT SPECIAL DITCH  
 5+019.556 - 5+035.000 LT  
 5+021.330 - 5+035.000 RT

MANUFACTURED TERMINAL SECTION  
 0+198.843 - 0+209.800 RT.  
 0+286.390 - 0+297.820 LT.  
 0+309.250 - 0+320.680 RT.

REMOVAL OF EXISTING GUARDRAIL  
 0+196.294 - 0+279.333 RT  
 0+234.728 - 0+283.732 LT

ANCHOR FOR STEEL BEAM GUARDRAIL  
 WARD 5+090.0 RT.

RELOCATE MAILBOX, SINGLE SUPPORT  
 5+022 RT.

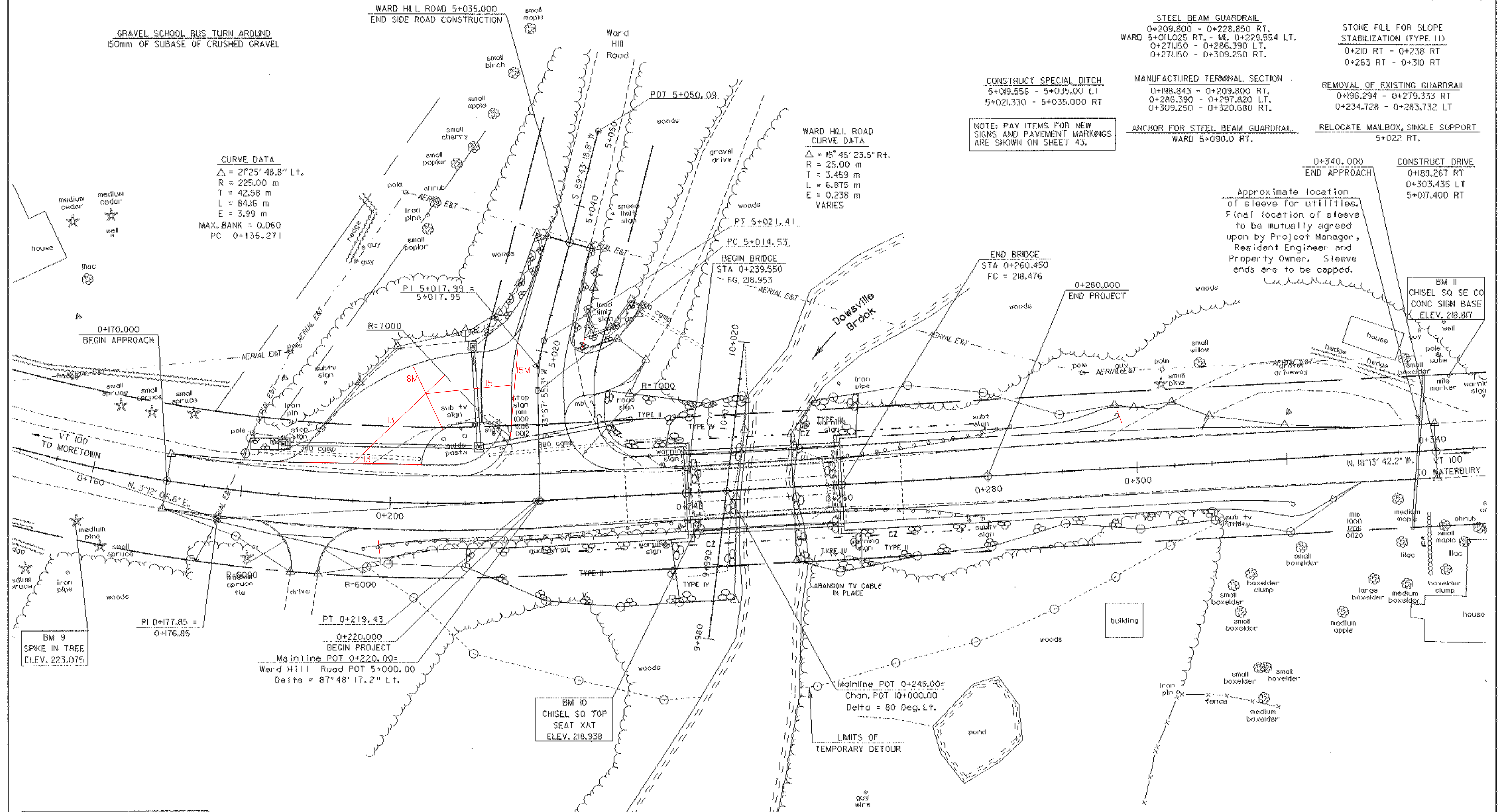
NOTE: PAY ITEMS FOR NEW SIGNS AND PAVEMENT MARKINGS ARE SHOWN ON SHEET 43.

CURVE DATA  
 $\Delta = 21^{\circ}25'48.8''$  Lt.  
 R = 225.00 m  
 T = 42.58 m  
 L = 84.16 m  
 E = 3.99 m  
 MAX. BANK = 0.060  
 PC 0+135.271

WARD HILL ROAD CURVE DATA  
 $\Delta = 15^{\circ}45'23.5''$  Rt.  
 R = 25.00 m  
 T = 3.459 m  
 L = 6.875 m  
 E = 0.238 m  
 VARIES

CONSTRUCT DRIVE  
 0+183.267 RT  
 0+303.435 LT  
 5+017.400 RT

Approximate location of sleeve for utilities. Final location of sleeves to be mutually agreed upon by Project Manager, Resident Engineer and Property Owner. Sleeve ends are to be capped.



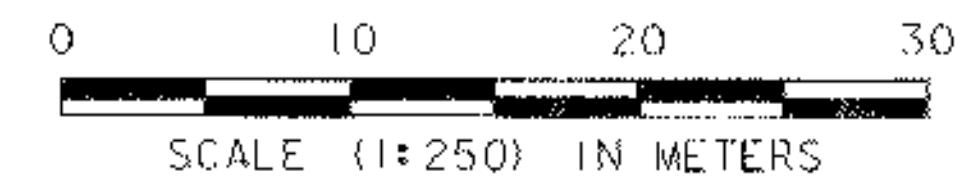
BM 9  
 SPIKE IN TREE  
 ELEV. 223.075

BM 10  
 CHISEL SQ SE CO  
 SEAT XAT  
 ELEV. 218.938

Existing Bridge Data  
 Bridge Width = 20'-0"  
 Roadway Width = 17'-0"  
 Bridge Length = 63'  
 Clear Span = 58'

The existing structure is a concrete deck on rolled beam stringers. The existing abutments are poured in-place concrete.

ALL UTILITIES CURRENTLY ON THE EXISTING BRIDGE WILL BE ABANDONED. THESE UTILITIES WILL BE MOVED TO THE EXISTING AERIAL UTILITY LINE JUST WEST OF THE BRIDGE.



PLAN SHEET

PROJECT NAME:	DUXBURY	PLOT DATE:	20-OCT-2005
PROJECT NUMBER:	STP 013-4(24)	DRAWN BY:	Crav
FILE NAME:	/str5/86e059/se059br2.dgn	CHECKED BY:	T. SUMNER
PROJECT LEADER:	C. KELLER	SHEET	12 OF 62
DESIGNED BY:	B. NYQUIST		
se059pil1			