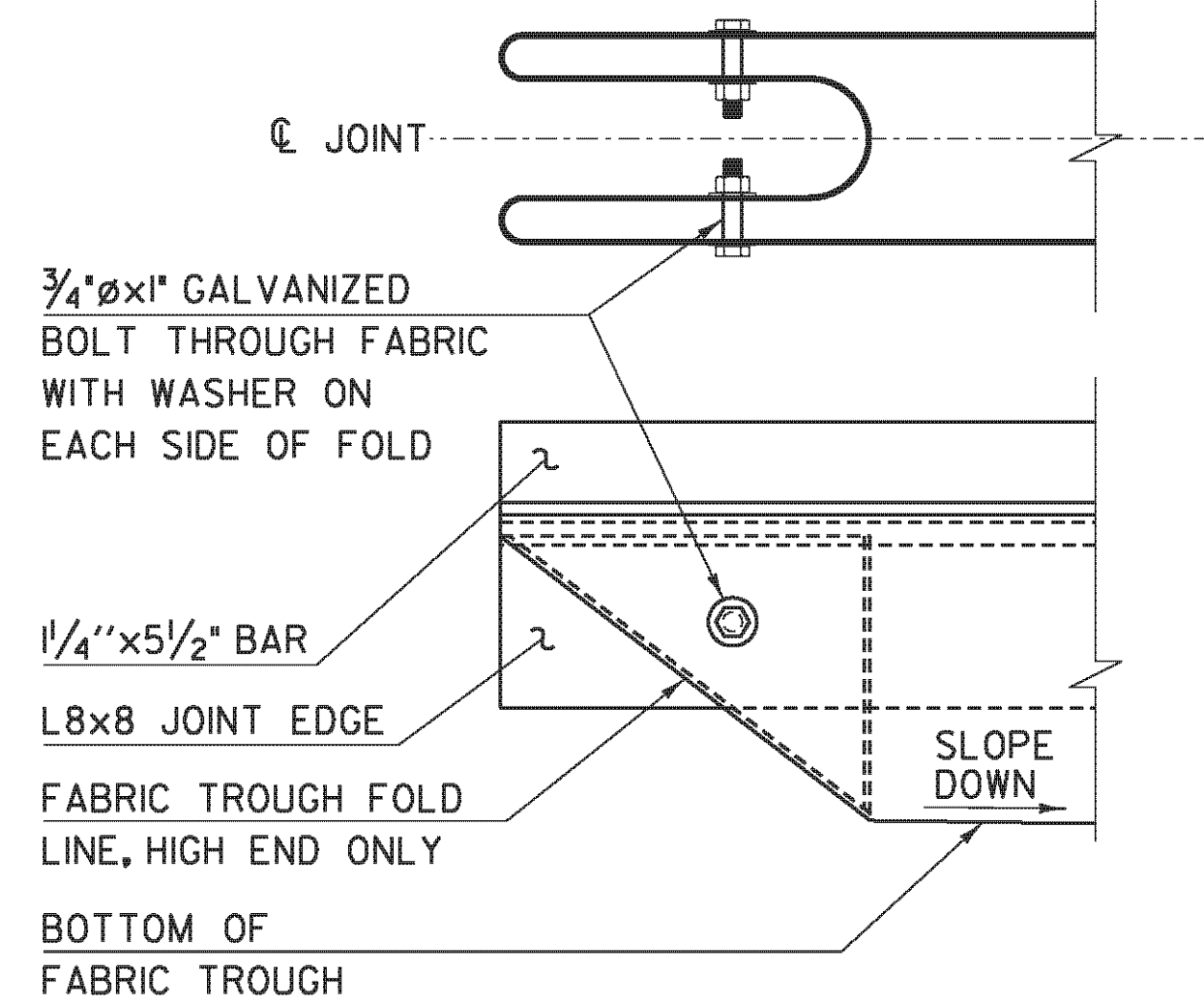
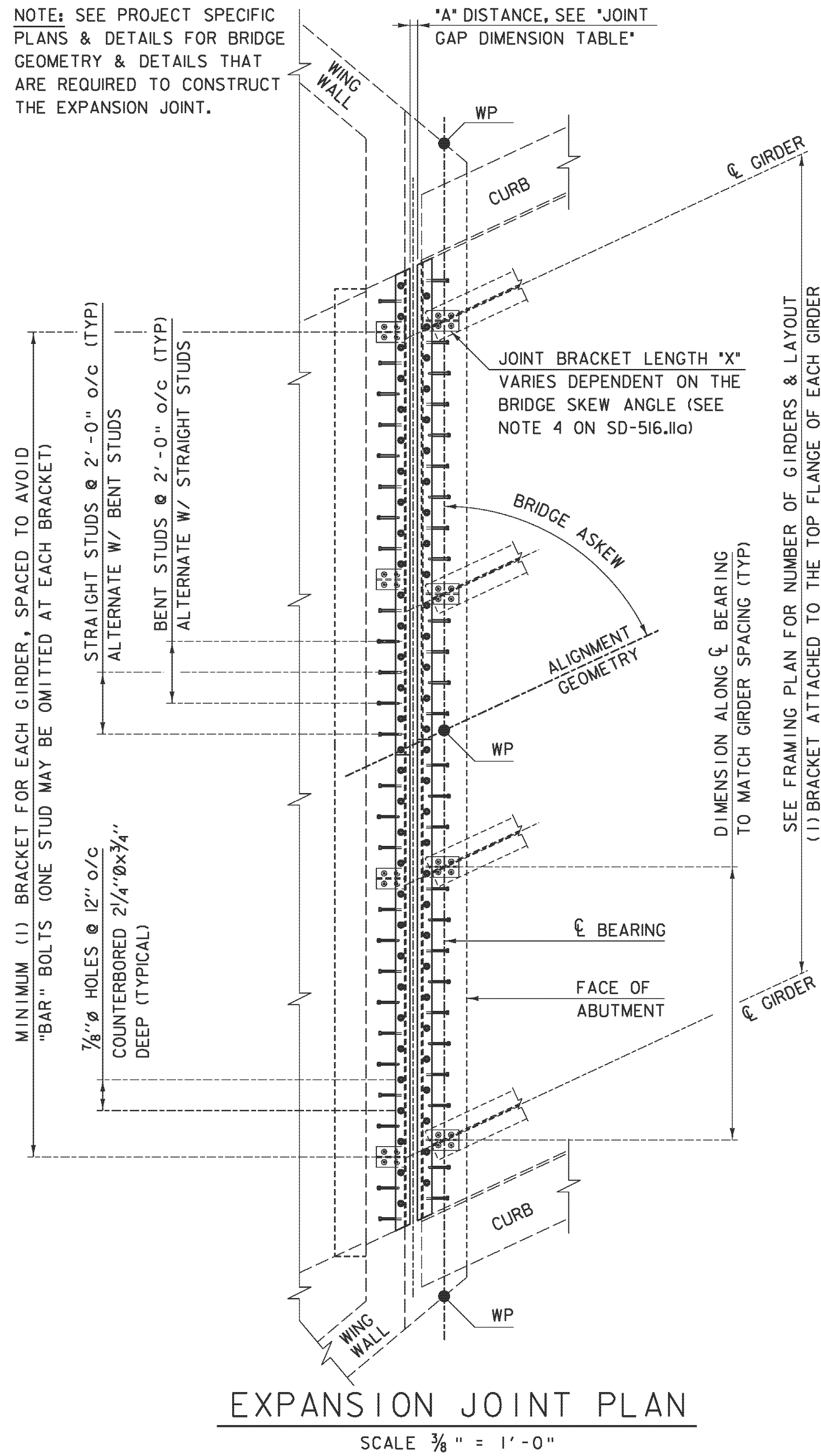


NOTE: SEE PROJECT SPECIFIC PLANS & DETAILS FOR BRIDGE GEOMETRY & DETAILS THAT ARE REQUIRED TO CONSTRUCT THE EXPANSION JOINT.

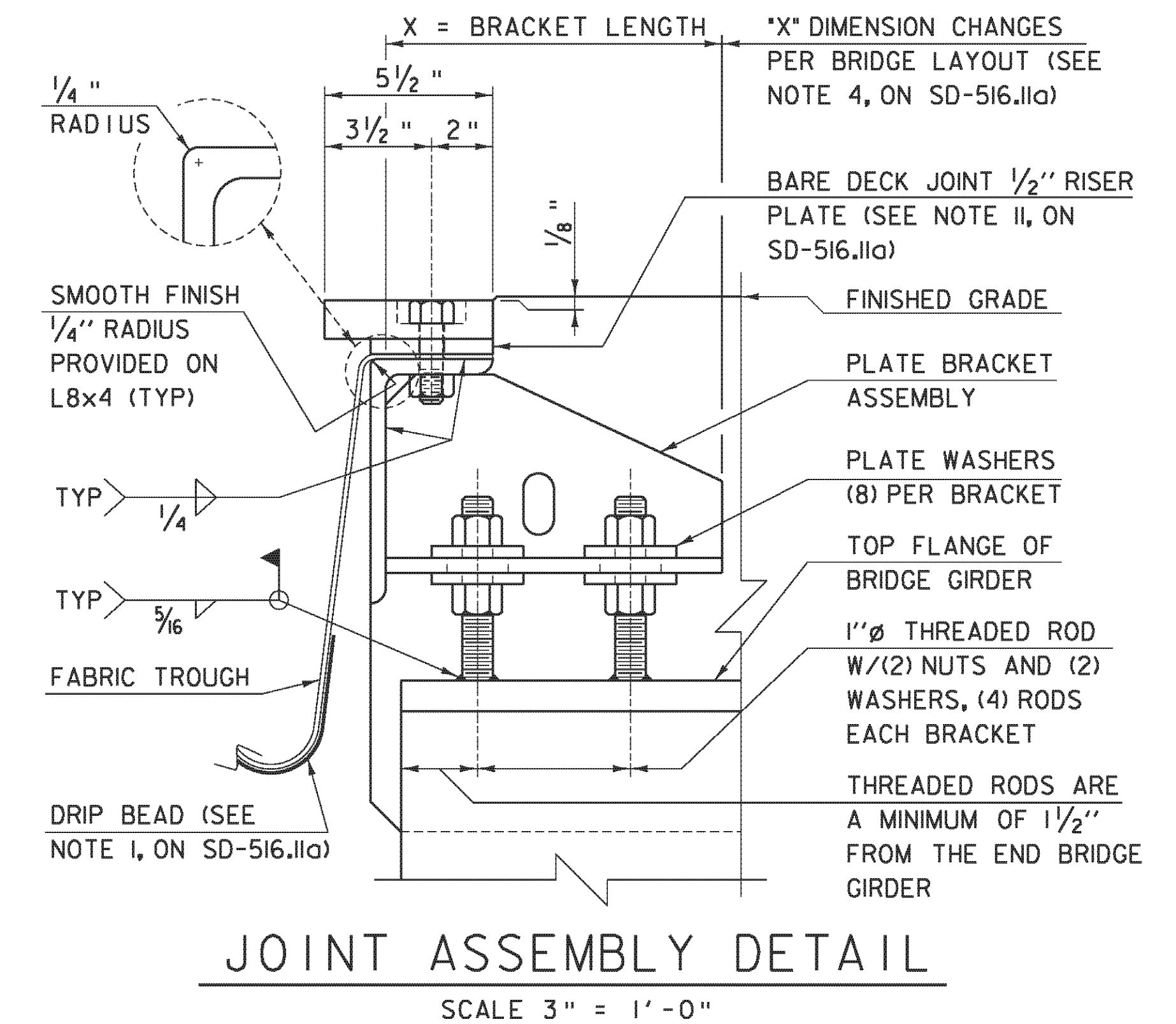
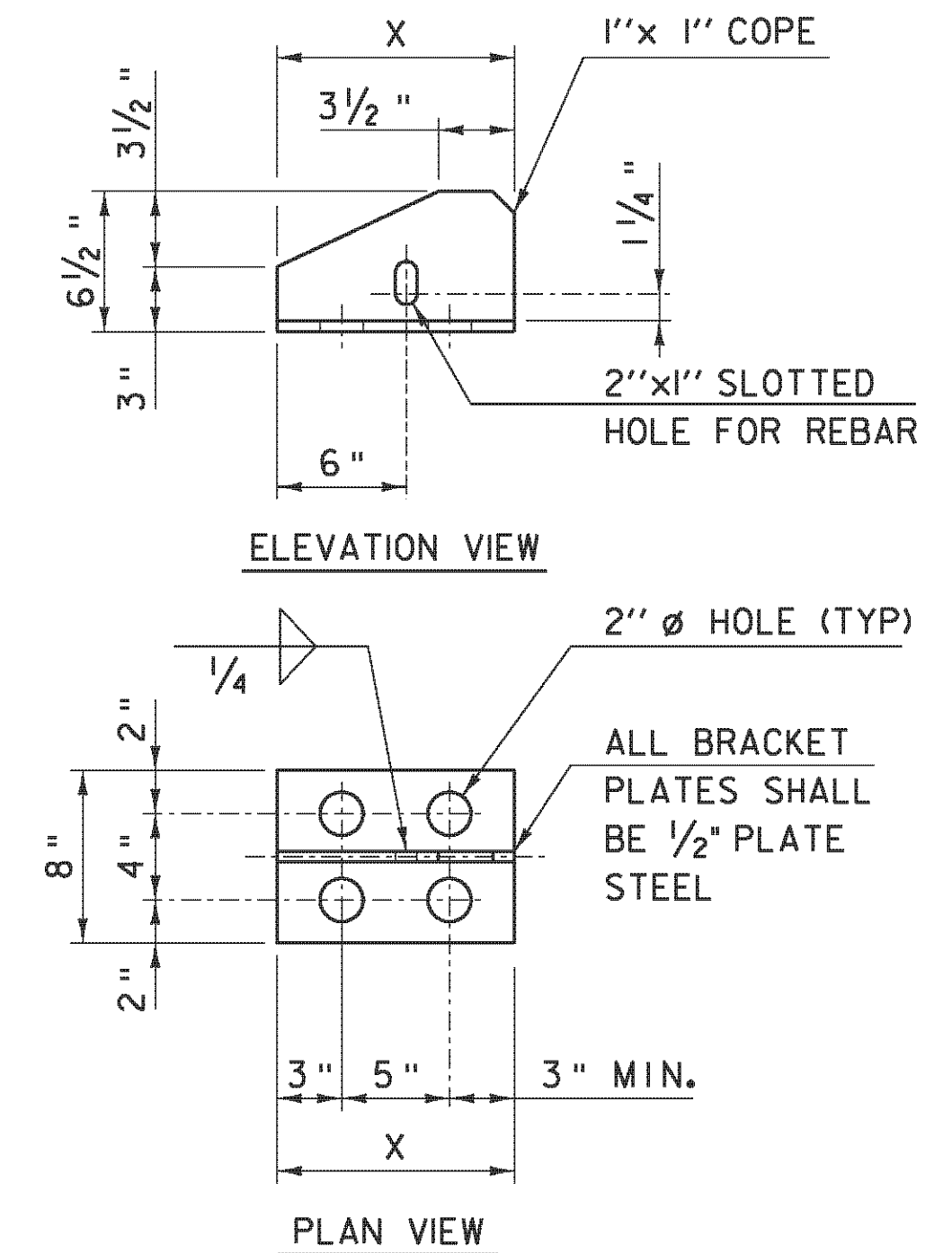
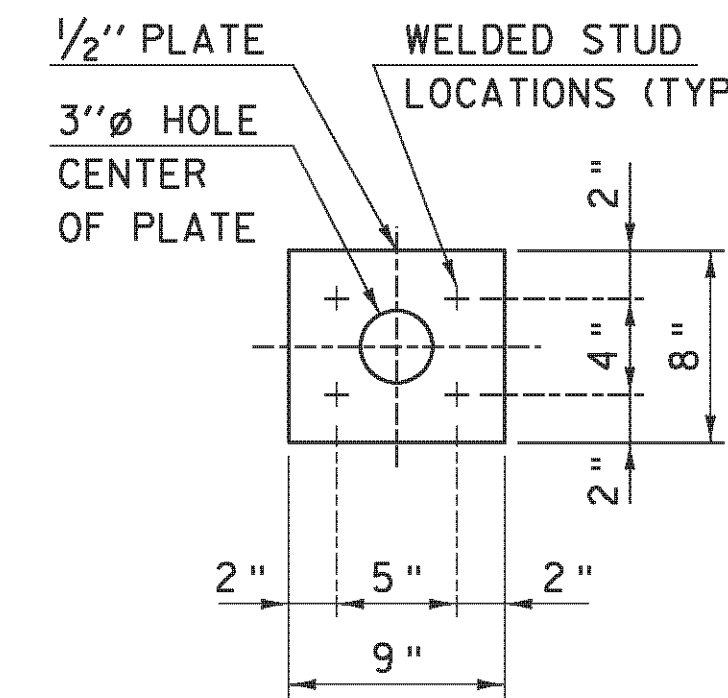


1. TROUGH SHALL BE FOLDED AT HIGH ENDS. TROUGH SHALL SLOPE AT MIN 2% DOWN TOWARD THE NEAREST DRAINAGE SPOUT HOPPER LOCATION.
2. BOLTS, NUTS AND WASHERS FOR FOLD SHALL MEET REQUIREMENTS OF SUBSECTION 714.04 AND SHALL BE GALVANIZED.

Temp (°F)	Expansion Length (ft)				
	"A" Distance (in)				
0	1 5/8	1 13/16	1 7/8	1 15/16	2 1/8
15	1 1/2	1 5/8	1 11/16	1 3/4	1 7/8
30	1 5/16	1 1/2	1 1/2	1 1/2	1 5/8
45	1 3/16	1 5/16	1 5/16	1 5/16	1 7/16
60	1 1/16	1 1/8	1 1/8	1 1/16	1 3/16
75	15/16	1	15/16	7/8	15/16
90	3/4	13/16	3/4	11/16	11/16
105	5/8	11/16	9/16	7/16	1/2

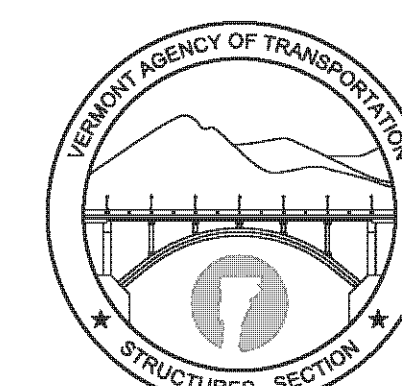
- 1) Expansion Length: Length of span, from Expansion Joint to nearest Fixed Bearing.
- 2) "A" Distance: measured distance during joint placement.
- 3) Temp: Approximate temperature of steel during joint placement.

PLATE WASHER DETAIL  
SCALE 3" = 1'-0"



REVISIONS	
FEBRUARY 24, 2011	APPROVED FOR USE BY VAOT STRUCTURES SECTION

BRIDGE EXPANSION JOINT,  
VERMONT



STRUCTURES  
DETAIL  
SD-516.11b