

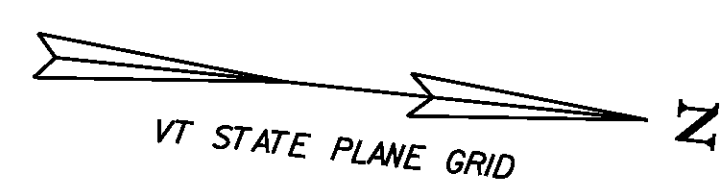
HD STEEL BEAM GUARDRAIL, GALVANIZED
 VT 14 STA 399+80.6 RT - VT 14 STA 400+05.68 RT
 VT 14 STA 399+88.9 LT - VT 14 STA 400+06.80 LT
 VT 14 STA 400+93.86 RT - VT 14 STA 401+12.3 RT
 VT 14 STA 400+93.64 LT - VT 14 STA 401+18.2 LT

HD STEEL BEAM GUARDRAIL, GALVANIZED/NESTED
 VT 14 STA 400+05.68 RT - VT 14 STA 400+93.86 RT
 VT 14 STA 400+06.80 LT - VT 14 STA 400+93.64 LT

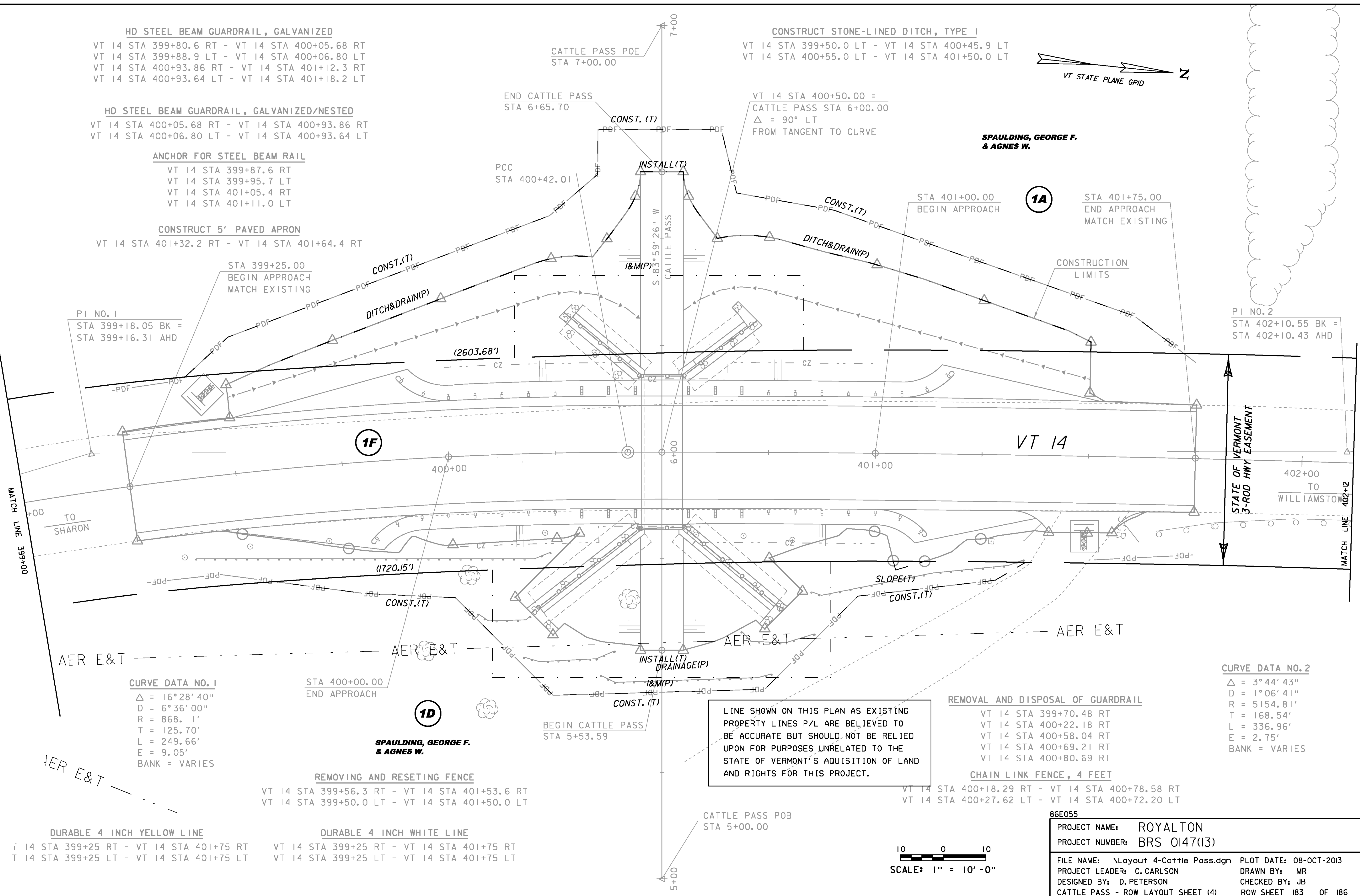
ANCHOR FOR STEEL BEAM RAIL
 VT 14 STA 399+87.6 RT
 VT 14 STA 399+95.7 LT
 VT 14 STA 401+05.4 RT
 VT 14 STA 401+11.0 LT

CONSTRUCT 5' PAVED APRON
 VT 14 STA 401+32.2 RT - VT 14 STA 401+64.4 RT

CONSTRUCT STONE-LINED DITCH, TYPE 1
 VT 14 STA 399+50.0 LT - VT 14 STA 400+45.9 LT
 VT 14 STA 400+55.0 LT - VT 14 STA 401+50.0 LT



SPAULDING, GEORGE F. & AGNES W.



PI NO. 1
 STA 399+18.05 BK =
 STA 399+16.31 AHD

PI NO. 2
 STA 402+10.55 BK =
 STA 402+10.43 AHD

CURVE DATA NO. 1
 $\Delta = 16^\circ 28' 40''$
 $D = 6^\circ 36' 00''$
 $R = 868.11'$
 $T = 125.70'$
 $L = 249.66'$
 $E = 9.05'$
 BANK = VARIES

CURVE DATA NO. 2
 $\Delta = 3^\circ 44' 43''$
 $D = 1^\circ 06' 41''$
 $R = 5154.81'$
 $T = 168.54'$
 $L = 336.96'$
 $E = 2.75'$
 BANK = VARIES

REMOVING AND RESETTING FENCE
 VT 14 STA 399+56.3 RT - VT 14 STA 401+53.6 RT
 VT 14 STA 399+50.0 LT - VT 14 STA 401+50.0 LT

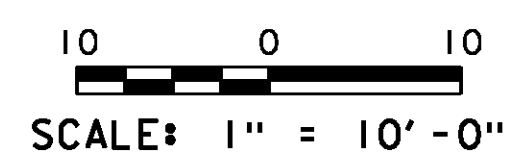
REMOVAL AND DISPOSAL OF GUARDRAIL
 VT 14 STA 399+70.48 RT
 VT 14 STA 400+22.18 RT
 VT 14 STA 400+58.04 RT
 VT 14 STA 400+69.21 RT
 VT 14 STA 400+80.69 RT

CHAIN LINK FENCE, 4 FEET
 VT 14 STA 400+18.29 RT - VT 14 STA 400+78.58 RT
 VT 14 STA 400+27.62 LT - VT 14 STA 400+72.20 LT

DURABLE 4 INCH YELLOW LINE
 RT 14 STA 399+25 RT - VT 14 STA 401+75 RT
 LT 14 STA 399+25 LT - VT 14 STA 401+75 LT

DURABLE 4 INCH WHITE LINE
 RT 14 STA 399+25 RT - VT 14 STA 401+75 RT
 LT 14 STA 399+25 LT - VT 14 STA 401+75 LT

LINE SHOWN ON THIS PLAN AS EXISTING
 PROPERTY LINES P/L ARE BELIEVED TO
 BE ACCURATE BUT SHOULD NOT BE RELIED
 UPON FOR PURPOSES UNRELATED TO THE
 STATE OF VERMONT'S ACQUISITION OF LAND
 AND RIGHTS FOR THIS PROJECT.



86E055

PROJECT NAME: ROYALTON
 PROJECT NUMBER: BRS 0147(13)

FILE NAME: \Layout 4-Cattle Pass.dgn PLOT DATE: 08-OCT-2013
 PROJECT LEADER: C. CARLSON DRAWN BY: MR
 DESIGNED BY: D. PETERSON CHECKED BY: JB
 CATTLE PASS - ROW LAYOUT SHEET (4) ROW SHEET 183 OF 186