

CONSTRUCT 5' WIDE PAVED APRON  
 VT 14 STA 388+02.2 LT - VT 14 STA 388+43.1 LT

CONSTRUCT GRAVEL DRIVE (12' WIDE)  
 VT 14 STA 388+25.0 LT  
 DRIVE NO.3 STA 30+32.6 LT

CONSTRUCT PAVED DRIVE (10' WIDE)  
 VT 14 STA 392+31.5 LT

SPECIAL PROVISION (REINFORCED SOIL SLOPE) W/ STONE FILL, TYPE III  
 VT 14 STA 388+00.0 RT - VT 14 STA 388+50.0 RT

RELOCATE MAILBOX, SINGLE SUPPORT  
 FROM DRIVE NO.3 STA 30+50.5 RT TO VT 14 STA 392+50.0 LT

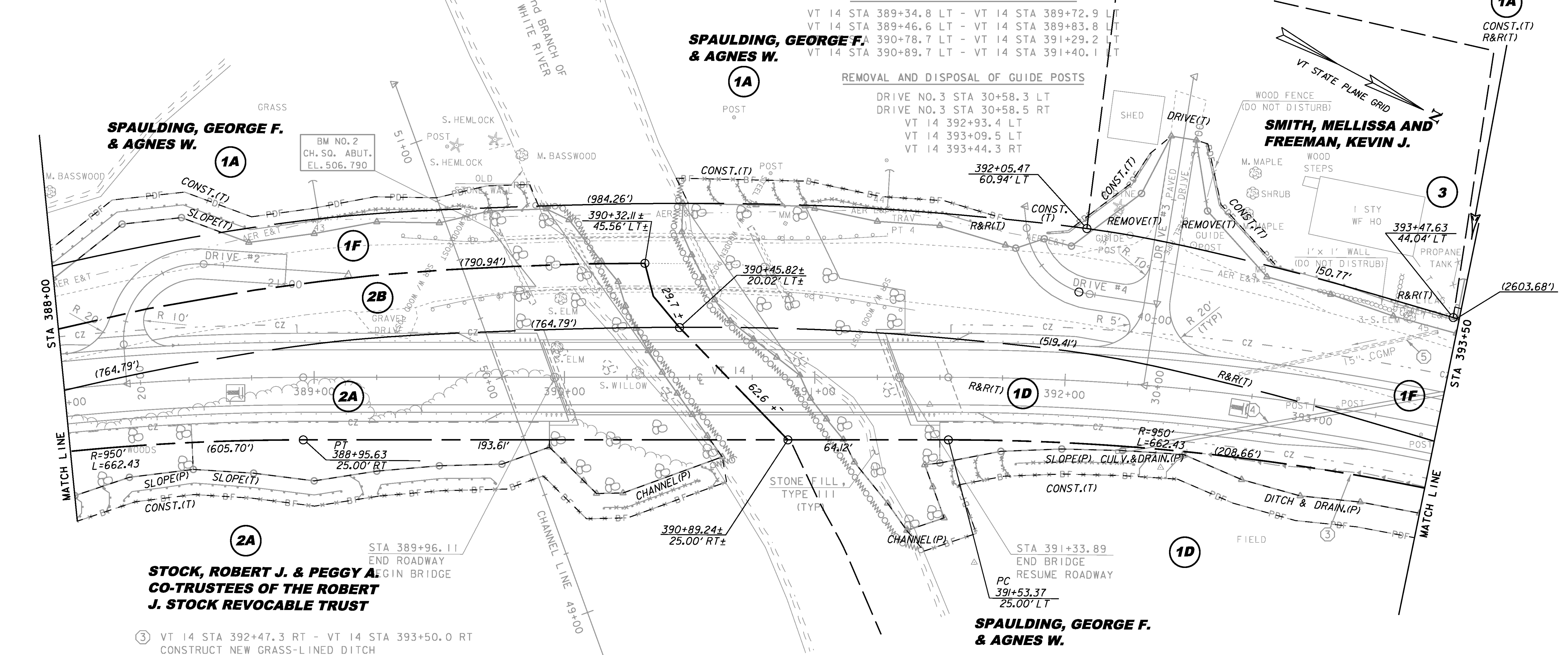
REMOVING AND RESETTING FENCE  
 VT 14 STA 390+78.7 LT - VT 14 STA 392+04.7 LT  
 VT 14 STA 390+89.7 LT - VT 14 STA 393+50.0 RT  
 VT 14 STA 391+48.7 RT - VT 14 STA 393+50.0 RT  
 VT 14 STA 393+44.9 LT - VT 14 STA 393+50.0 LT

BOX BEAM GUARDRAIL  
 VT 14 STA 388+00.0 RT - VT 14 STA 389+66.8 RT  
 VT 14 STA 388+57.9 LT - VT 14 STA 389+56.3 LT  
 VT 14 STA 391+63.1 LT - VT 14 STA 391+89.7 LT  
 VT 14 STA 391+73.7 RT - VT 14 STA 392+74.1 RT

MANUFACTURED TERMINAL SECTION, TANGENT  
 VT 14 STA 388+00.0 LT - VT 14 STA 388+02.6 LT  
 VT 14 STA 388+44.0 LT - VT 14 STA 388+57.9 LT  
 VT 14 STA 391+89.7 LT - VT 14 STA 392+03.5 LT  
 VT 14 STA 391+74.1 RT - VT 14 STA 392+88.3 RT

SPECIAL PROVISION (GUARDRAIL APPROACH SECTION TO CONCRETE COMBINATION BRIDGE RAILING)  
 VT 14 STA 389+56.3 LT - VT 14 STA 389+90.3 LT  
 VT 14 STA 389+66.8 RT - VT 14 STA 390+00.8 RT  
 VT 14 STA 391+29.2 LT - VT 14 STA 391+63.1 LT  
 VT 14 STA 391+39.7 RT - VT 14 STA 391+73.7 RT

BRIDGE RAILING, GALVANIZED STEEL TUBING/CONCRETE COMBINATION  
 VT 14 STA 389+90.3 LT - VT 14 STA 391+29.2 LT  
 VT 14 STA 390+00.8 RT - VT 14 STA 391+39.7 RT



- ③ VT 14 STA 392+47.3 RT - VT 14 STA 393+50.0 RT  
CONSTRUCT NEW GRASS-LINED DITCH
- ④ VT 14 STA 392+22.2 RT - VT 14 STA 393+74.4 LT  
NEW 18" X 160" PCCSP (0.064), CAAP (0.060),  
RCP CL. III OR CPEP (SL) OPTION
- ⑤ VT 14 STA 392+68.9 LT - VT 14 STA 393+43.0 LT  
EXISTING 15" CGMP & INLET HEADWALL - REMOVE

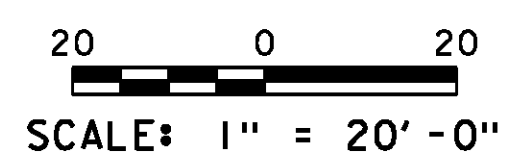
**EXISTING BRIDGE DATA**

THREE-SPAN CONCRETE T-BEAM SUPERSTRUCTURE WITH ASPHALT OVERLAY

CAST-IN-PLACE CONCRETE ABUTMENTS, WINGWALLS AND PIERS

BRIDGE LENGTH: 105'  
 BRIDGE WIDTH (FASCIA TO FASCIA): 23.7'  
 VERTICAL CLEARANCE UNDER BRIDGE: 12'

LINE SHOWN ON THIS PLAN AS EXISTING PROPERTY LINES P/L ARE BELIEVED TO BE ACCURATE BUT SHOULD NOT BE RELIED UPON FOR PURPOSES UNRELATED TO THE STATE OF VERMONT'S ACQUISITION OF LAND AND RIGHTS FOR THIS PROJECT.



86E055	PROJECT NAME: ROYALTON
	PROJECT NUMBER: BRS 0147(13)
FILE NAME: \BRIDGE 27 \Layout 2.dgn	PLOT DATE: 08-OCT-2013
PROJECT LEADER: C. CARLSON	DRAWN BY: MR
DESIGNED BY: D. PETERSON	CHECKED BY: JB
BRIDGE 27 ROW LAYOUT SHEET (2)	ROW SHEET 181 OF 186