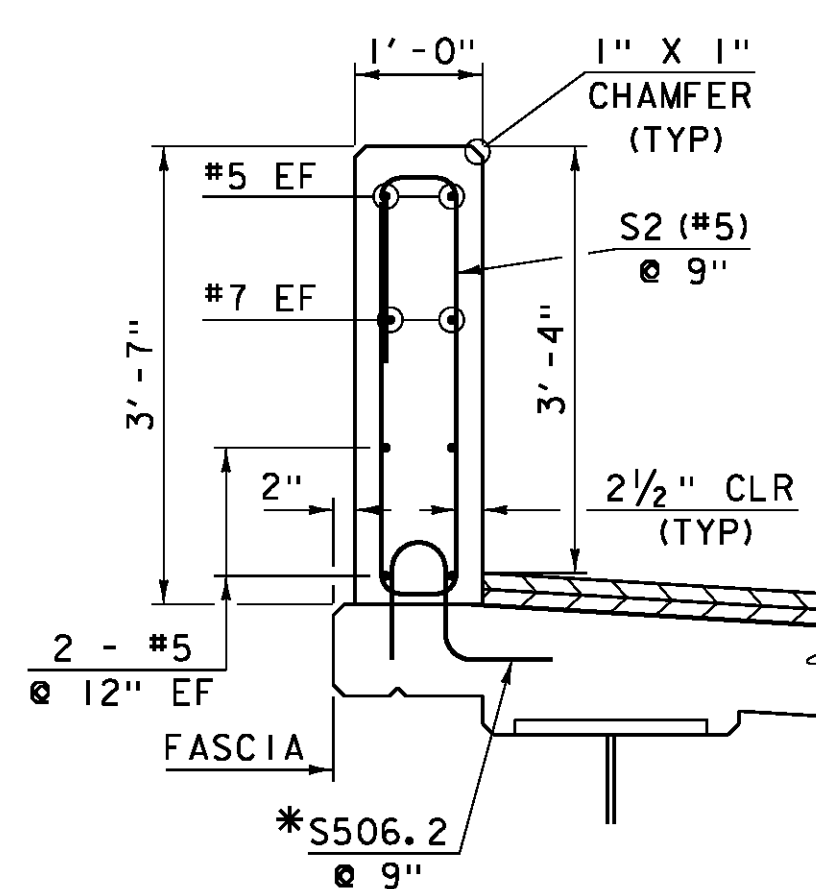
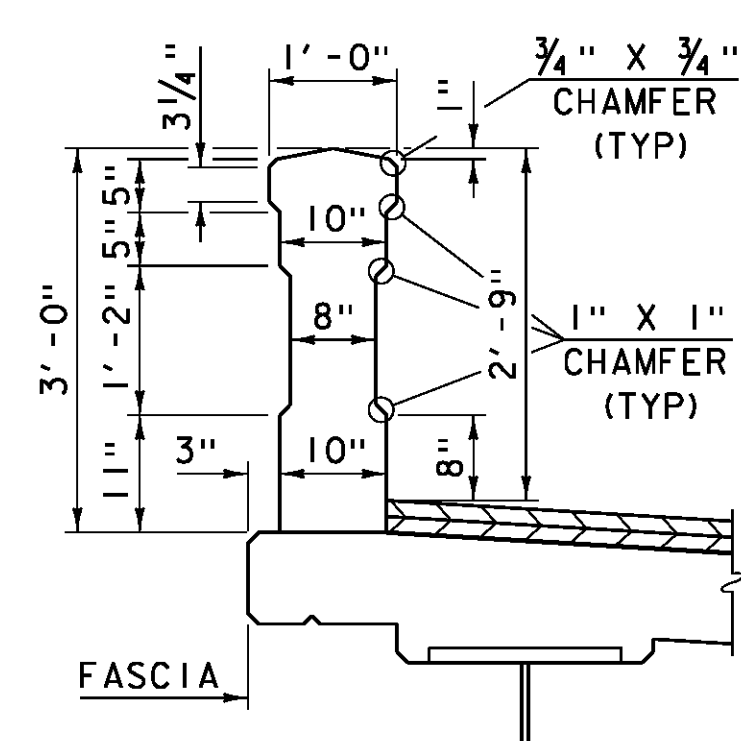


**PARTIAL BRIDGE RAIL ELEVATION
(VIEWED FROM CENTERLINE OF ROADWAY)**

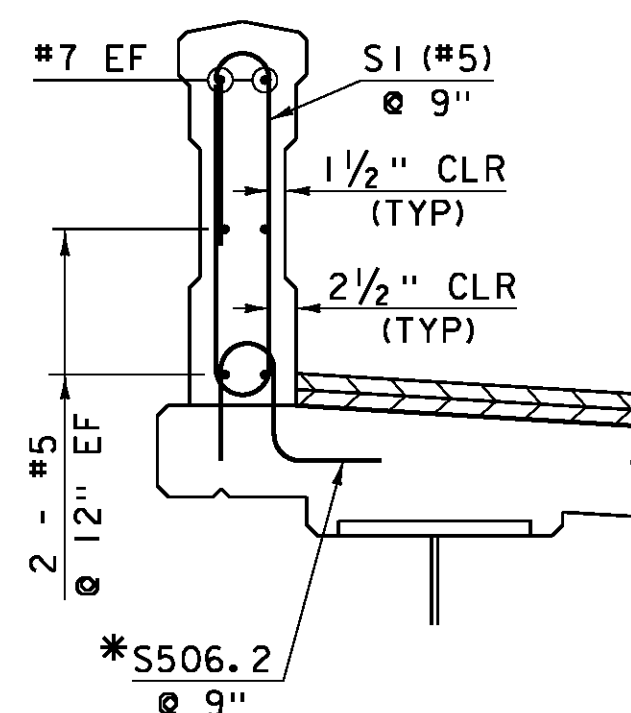
SCALE: 3/4" = 1'-0"



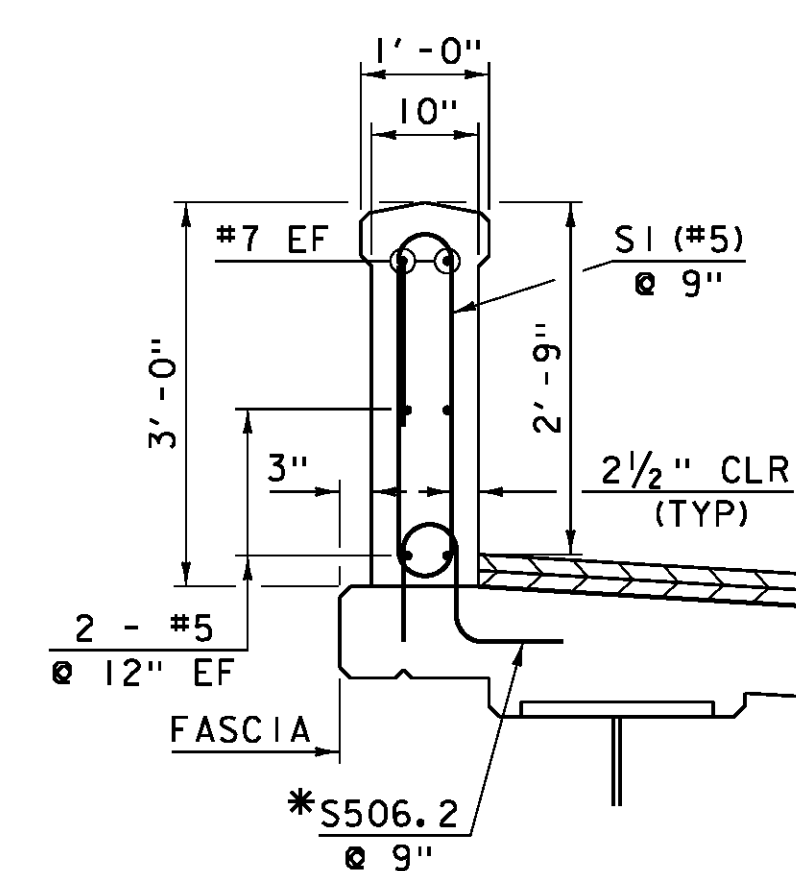
SECTION "A-A"
SCALE: 3/4" = 1'-0"



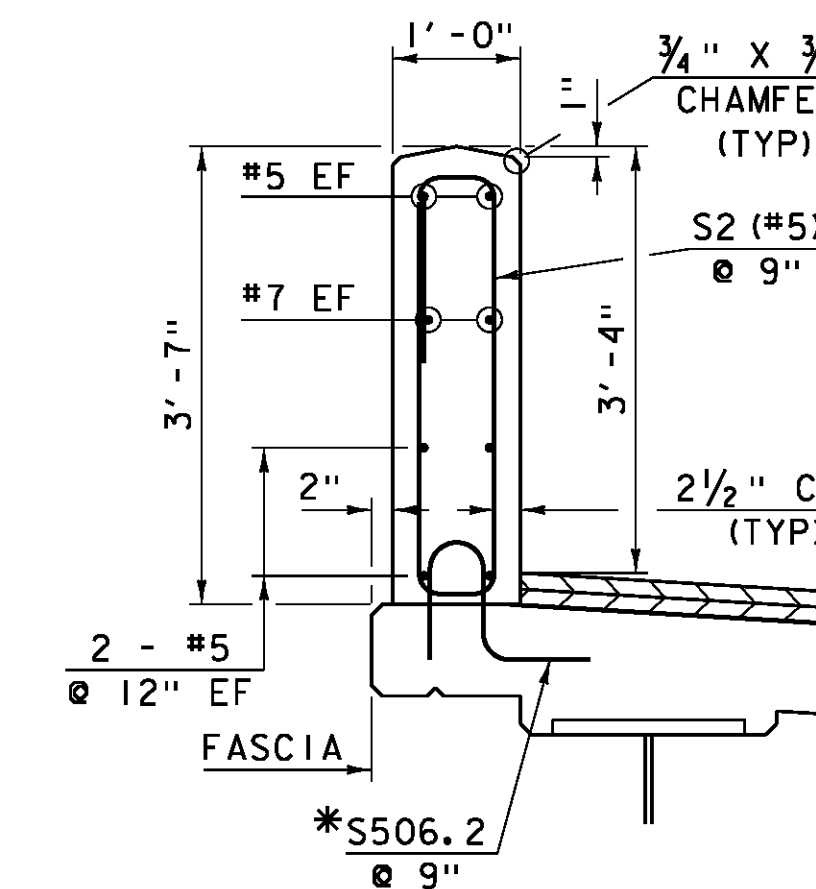
**SECTION "B-B"
WITHOUT REINFORCING**
SCALE: 3/4" = 1'-0"



SECTION "B-B"
SCALE: 3/4" = 1'-0"

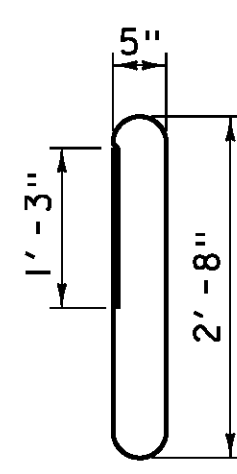
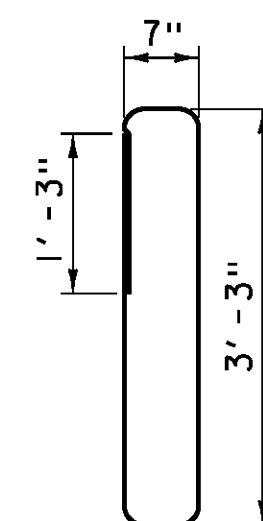


SECTION "C-C"
SCALE: 3/4" = 1'-0"



SECTION "D-D"
SCALE: 3/4" = 1'-0"

*PAID FOR UNDER PAY ITEM 507.12,
"REINFORCING STEEL, LEVEL 11".



S2 (#5) S1 (#5)
BRIDGE RAIL REINFORCING DETAILS
SCALE: 3/4" = 1'-0"

NOTE:

NF = NEAR FACE
FF = FAR FACE
EF = EACH FACE
▲ = CUT TO FIT IN FIELD
3" CLEAR, UNLESS OTHERWISE SPECIFIED ON THE PLANS.
2'-2" BAR LAP UNLESS OTHERWISE SPECIFIED ON THE PLANS.

NOTES:

- ALL REINFORCING STEEL IN THE BRIDGE RAIL SHALL BE LEVEL 11.
- LAP SPLICES FOR #7 BARS SHALL BE 3'-0".

PROJECT NAME: ROYALTON
PROJECT NUMBER: BRS 0147 (13)

FILE NAME: \BR 28\86e055rail.28.dgn PLOT DATE: 08-OCT-2013
PROJECT LEADER: C. CARLSON DRAWN BY: R. PELLETT
DESIGNED BY: D. PETERSON CHECKED BY: D. PETERSON
BRIDGE 28 BRIDGE RAIL DETAILS SHEET 132 OF 186