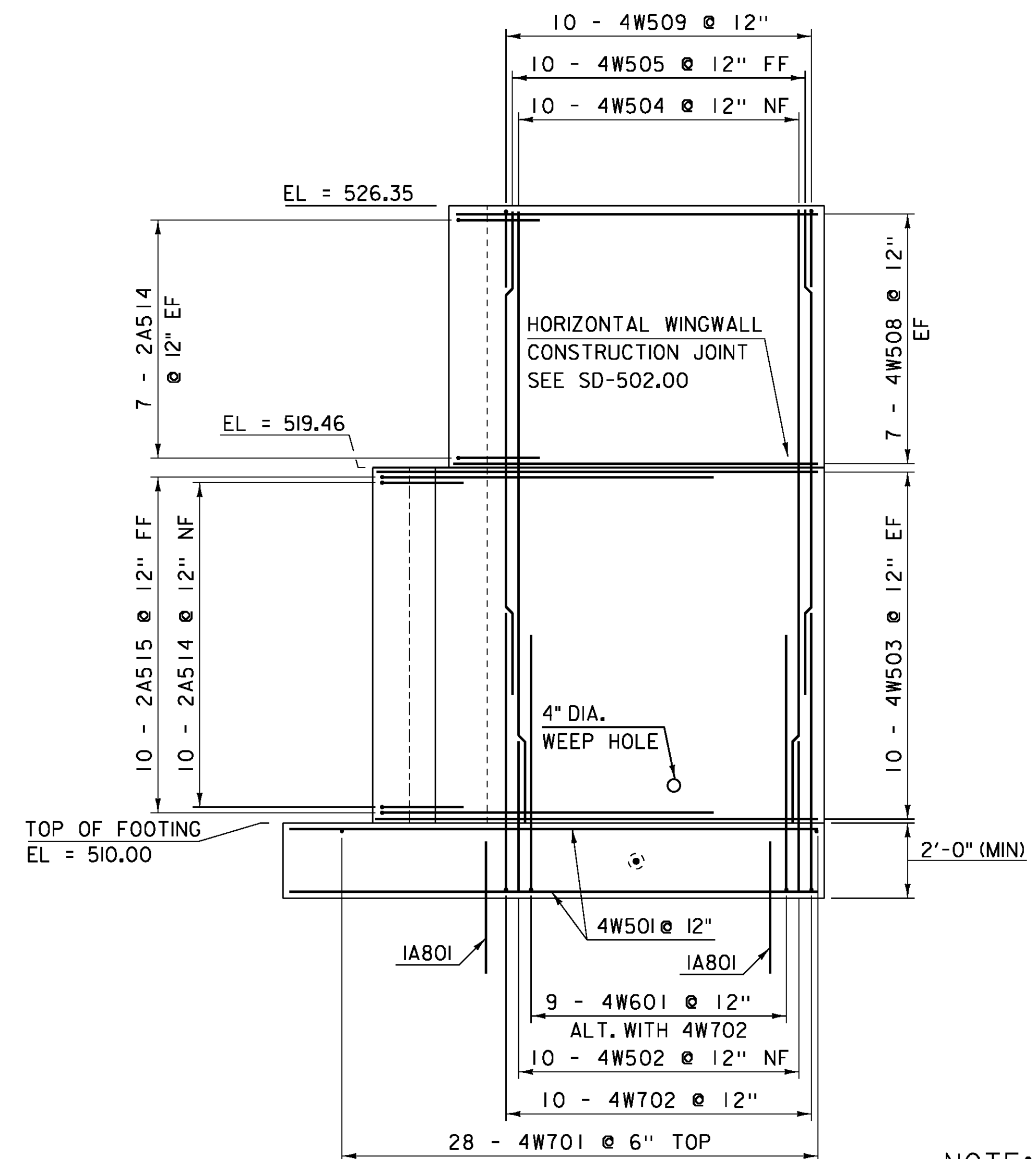


WINGWALL #3 ELEVATION

SCALE 3/8" = 1'-0"



WINGWALL #4 ELEVATION

SCALE 3/8" = 1'-0"

NOTE:

- NF = NEAR FACE
- FF = FAR FACE
- EF = EACH FACE
- ▲ = CUT TO FIT IN FIELD
- 3" CLEAR, UNLESS OTHERWISE SPECIFIED ON THE PLANS.
- 2'-2" BAR LAP UNLESS OTHERWISE SPECIFIED ON THE PLANS.

PROJECT NAME:	ROYALTON
PROJECT NUMBER:	BRS 0147 (13)
FILE NAME:	86e055/STR/86e055sub.dgn
PROJECT LEADER:	C.CARLSON
DESIGNED BY:	D.PETERSON
BRIDGE 28 WINGWALL 3 AND 4 ELEVATIONS	
PLOT DATE:	08-OCT-2013
DRAWN BY:	G.ROKES
CHECKED BY:	D.PETERSON
SHEET	128 OF 186