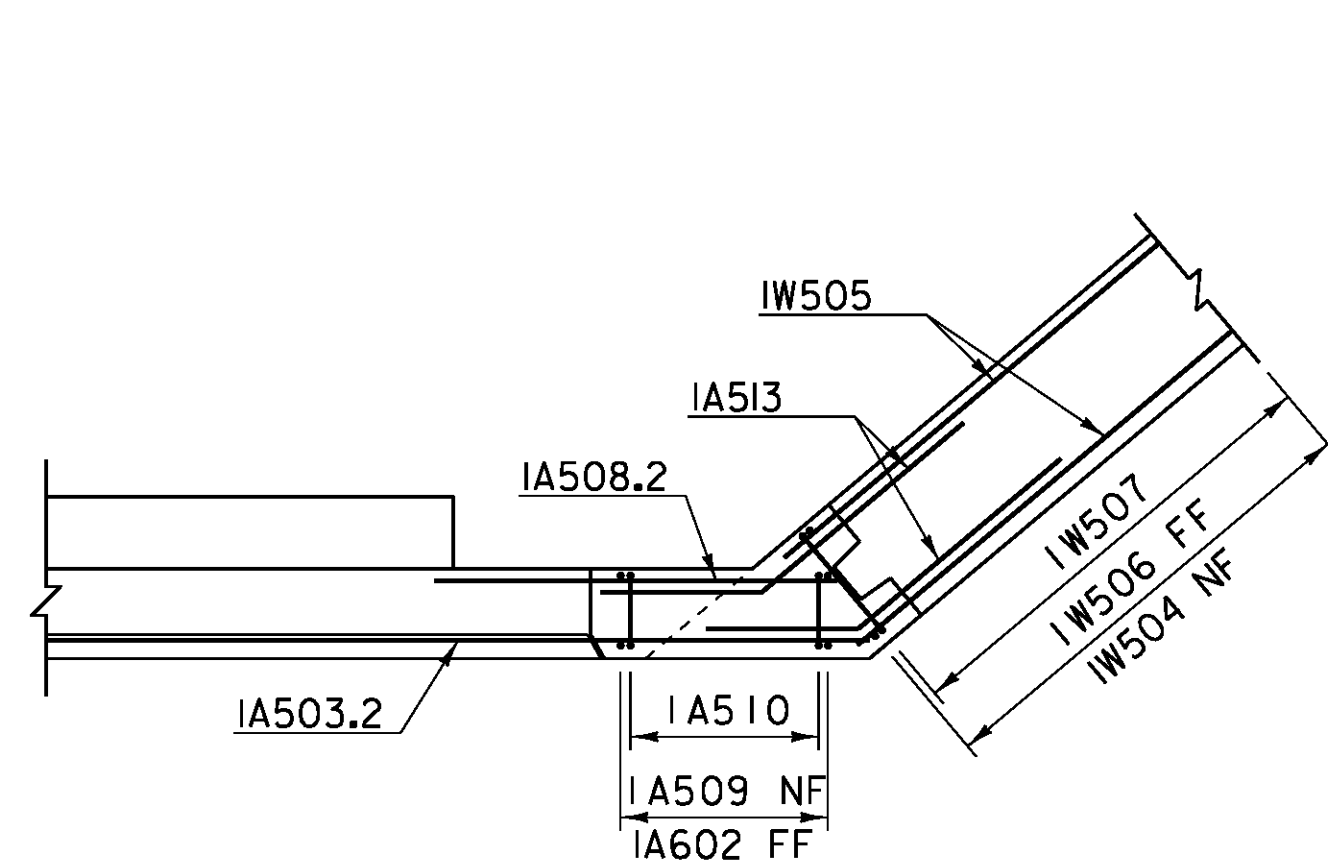


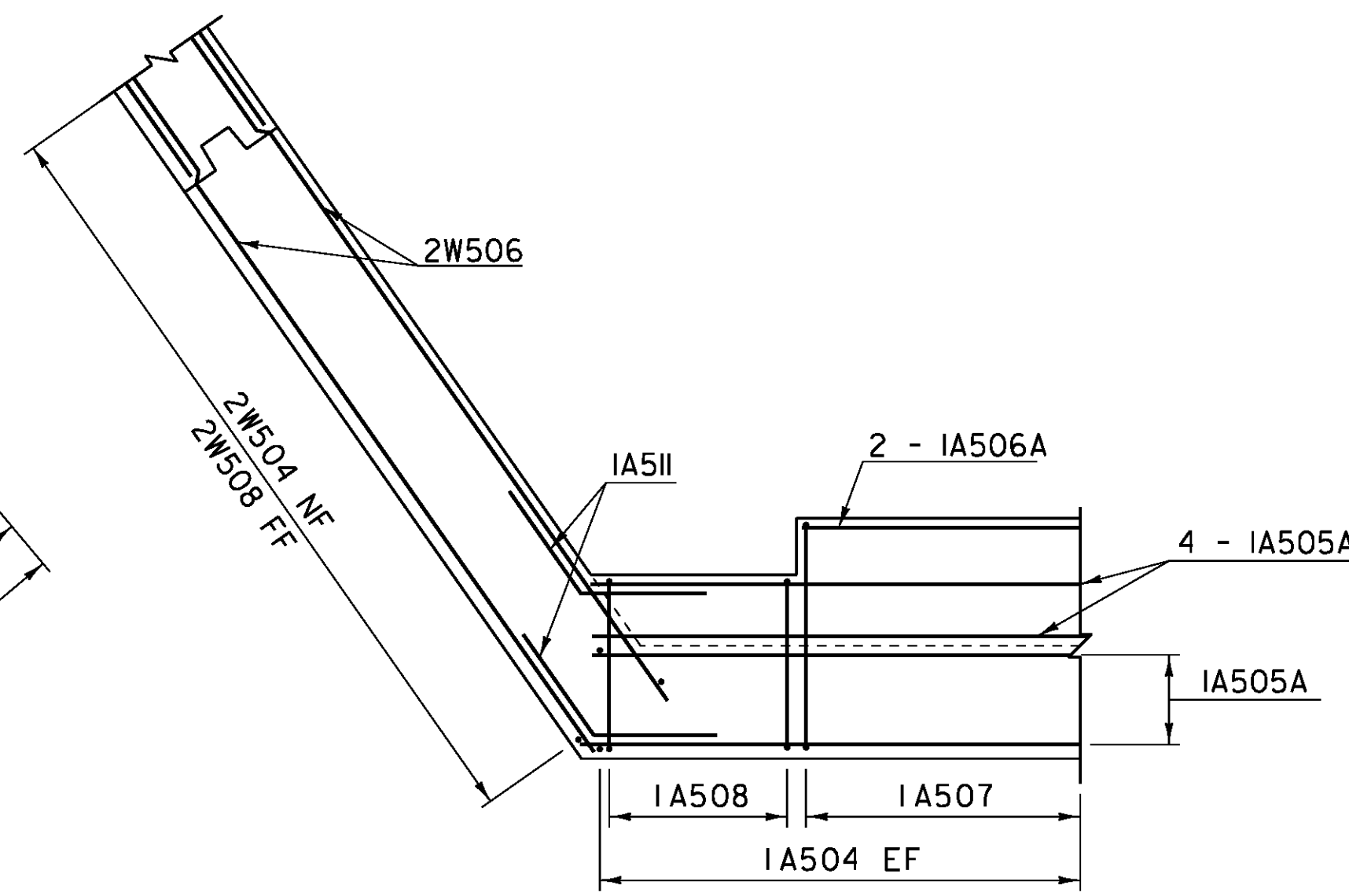
WINGWALL #1 CORNER
BELOW BRIDGE SEAT

SCALE 3/8" = 1'-0"



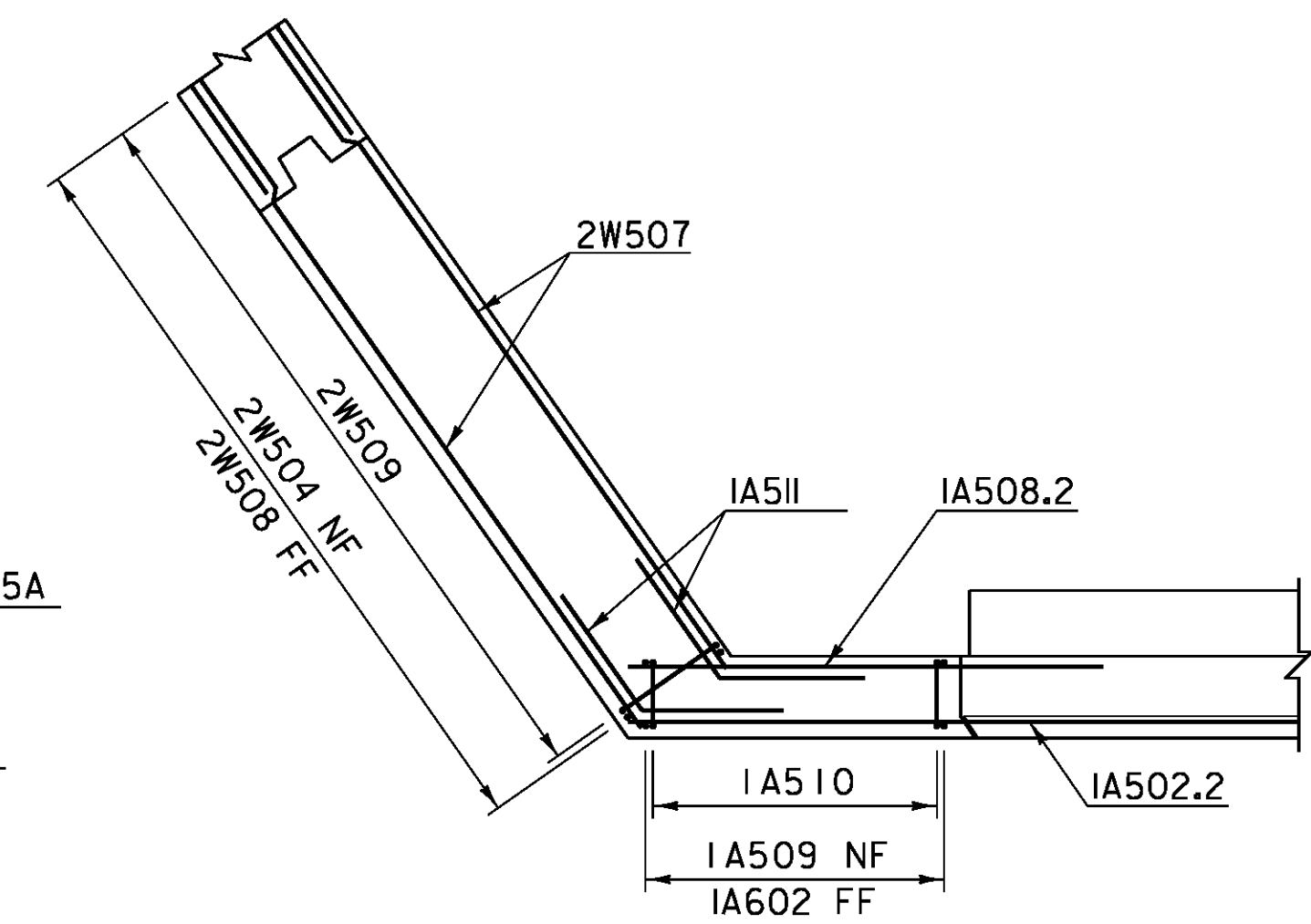
WINGWALL #1 CORNER
ABOVE BRIDGE SEAT

SCALE 3/8" = 1'-0"



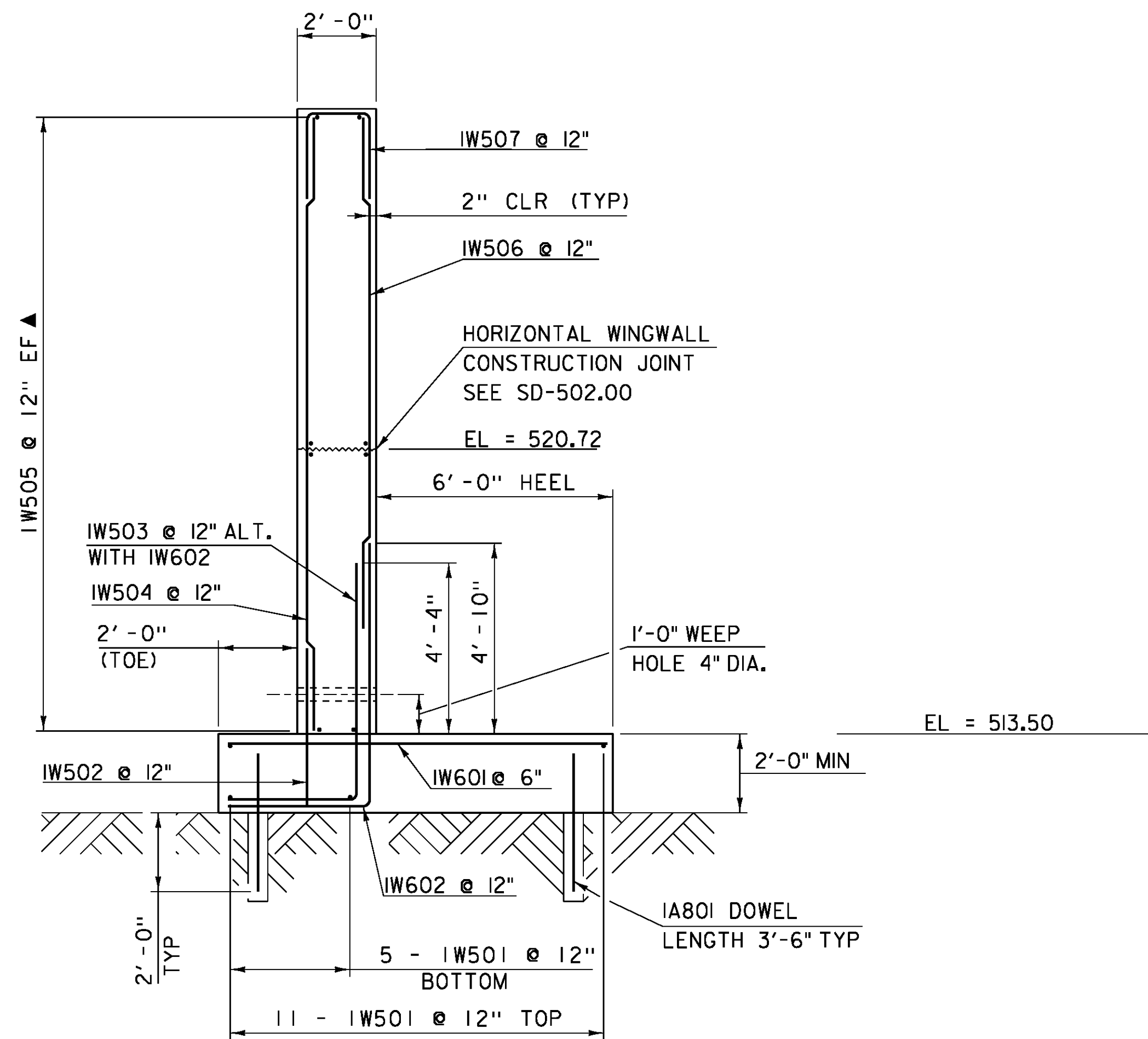
WINGWALL #2 CORNER
BELOW BRIDGE SEAT

SCALE 3/8" = 1'-0"



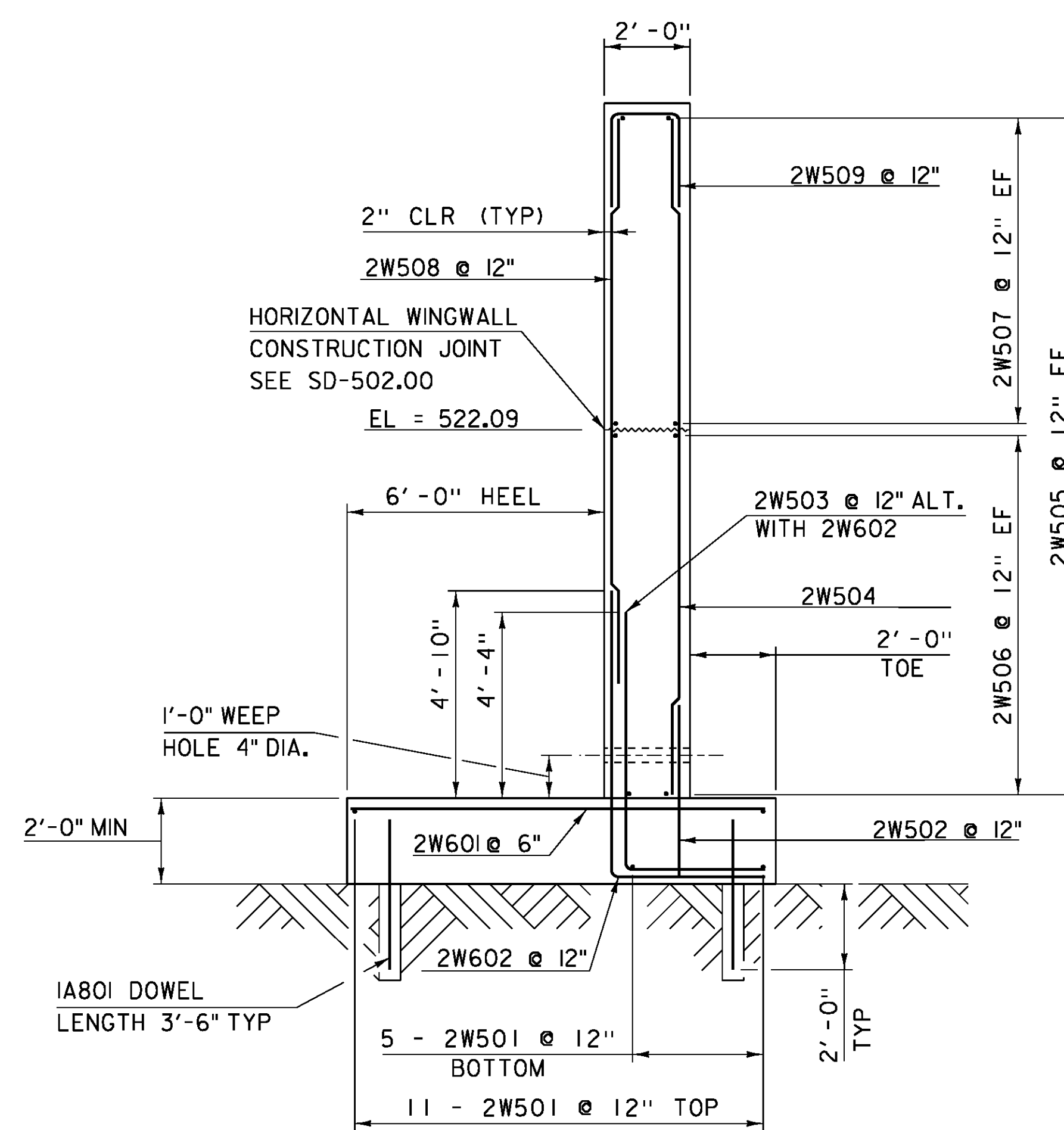
WINGWALL #2 CORNER
ABOVE BRIDGE SEAT

SCALE 3/8" = 1'-0"



WINGWALL #1 TYPICAL

SCALE 3/8" = 1'-0"



WINGWALL #2 TYPICAL

SCALE 3/8" = 1'-0"

NOTE:

- NF = NEAR FACE
- FF = FAR FACE
- EF = EACH FACE
- ▲ = CUT TO FIT IN FIELD
- 3" CLEAR, UNLESS OTHERWISE SPECIFIED ON THE PLANS.
- 2'-2" BAR LAP UNLESS OTHERWISE SPECIFIED ON THE PLANS.

PROJECT NAME: ROYALTON
PROJECT NUMBER: BRS 0147 (13)

FILE NAME: 86e055/STR/86e055sub.dgn PLOT DATE: 08-OCT-2013
PROJECT LEADER: C.CARLSON DRAWN BY: G.ROKES
DESIGNED BY: D.PETERSON CHECKED BY: D.PETERSON
BRIDGE 28 WINGWALL 1 AND 2 TYPICALS SHEET 123 OF 186