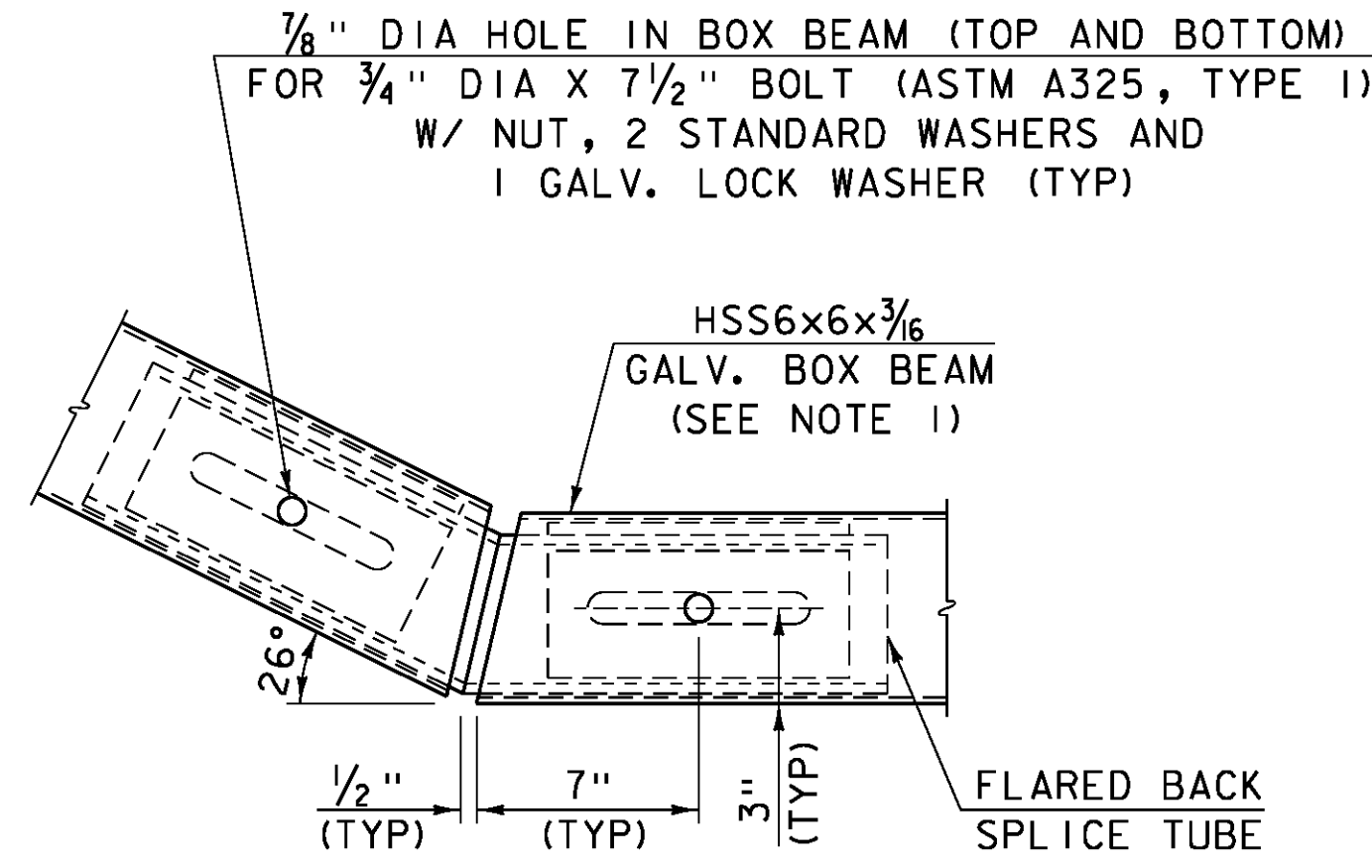
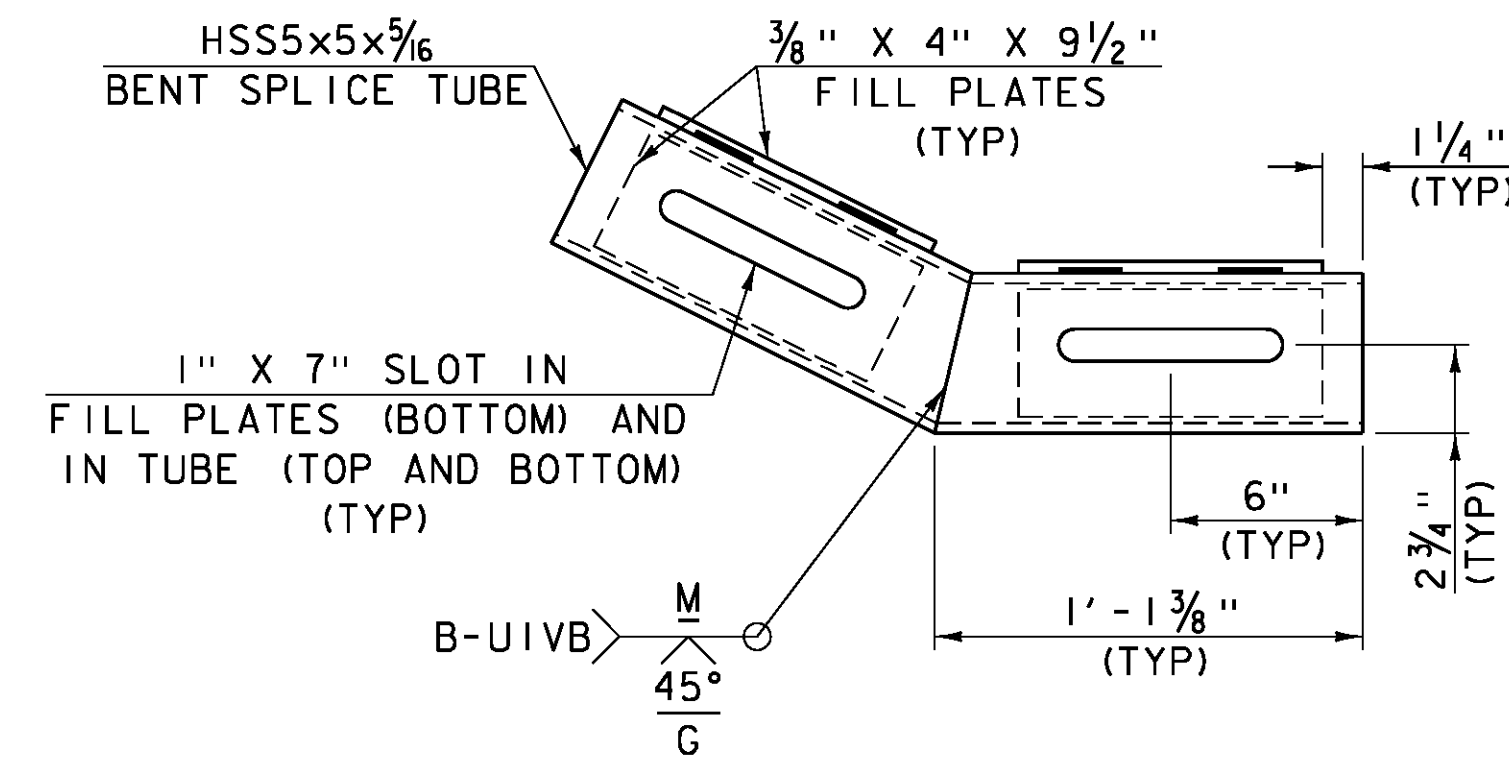


**ELEVATION**



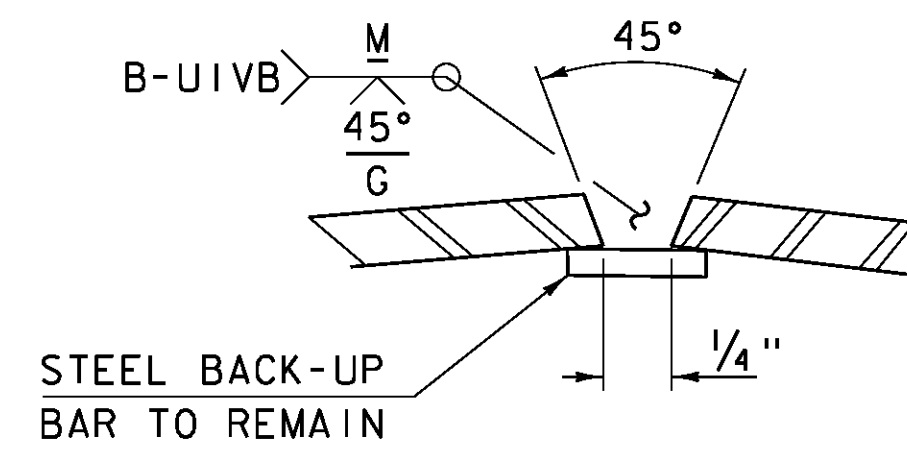
**PLAN BOTTOM RAIL FLARE BACK DETAIL**

NOT TO SCALE



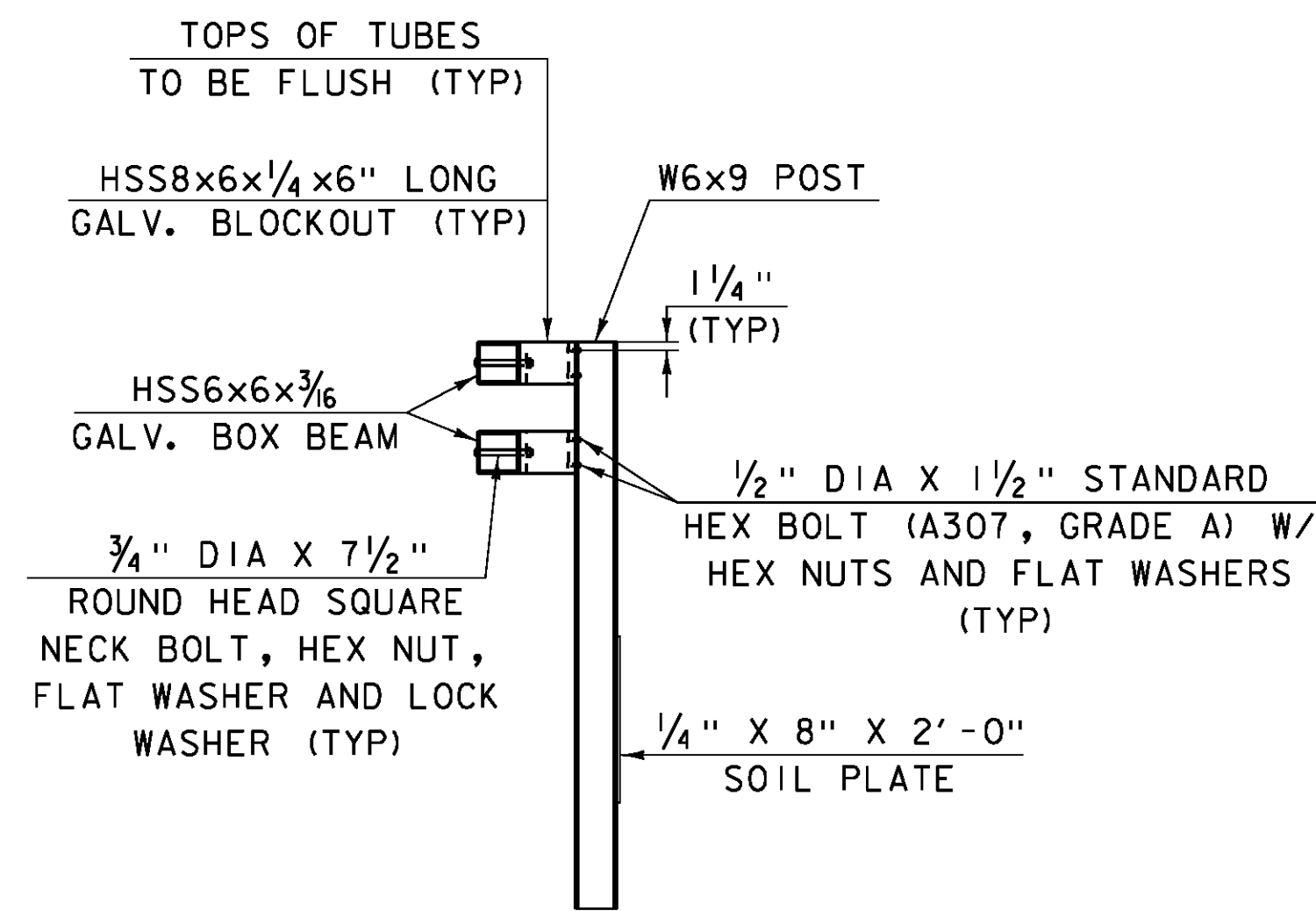
**PLAN FLARED BACK SPLICE TUBE DETAIL**

NOT TO SCALE



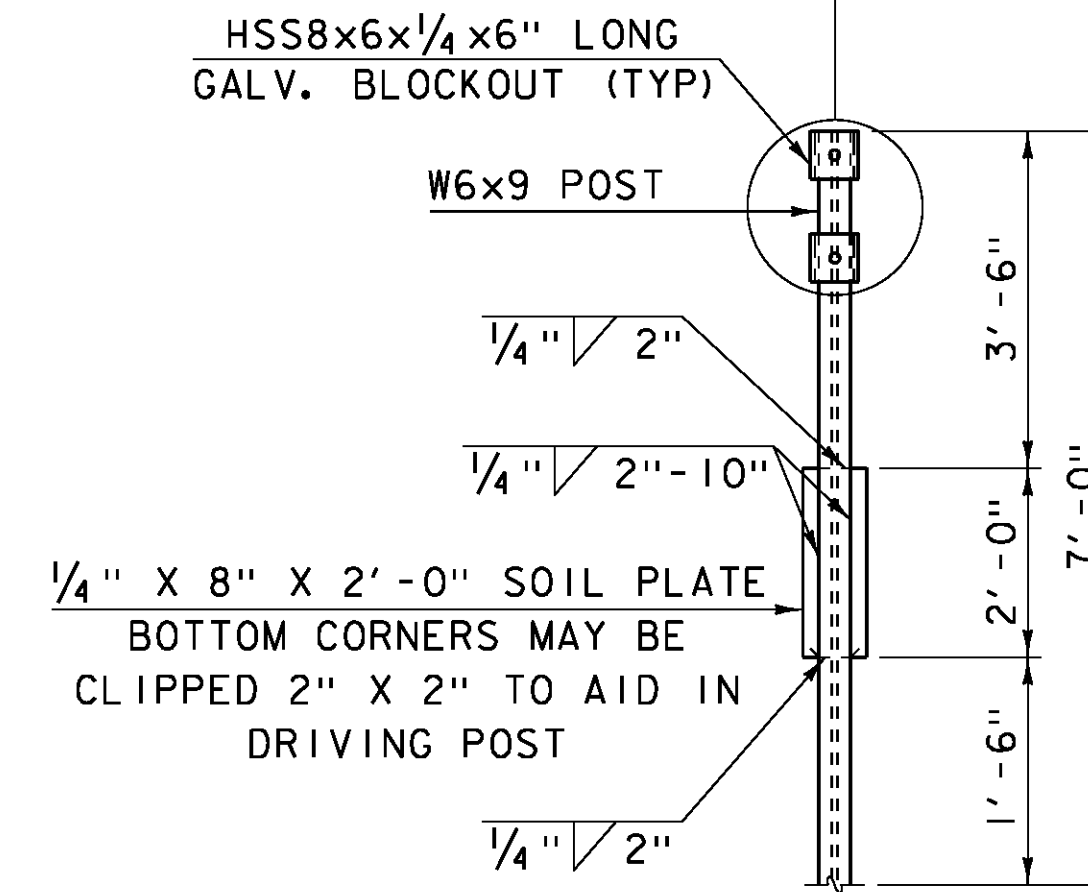
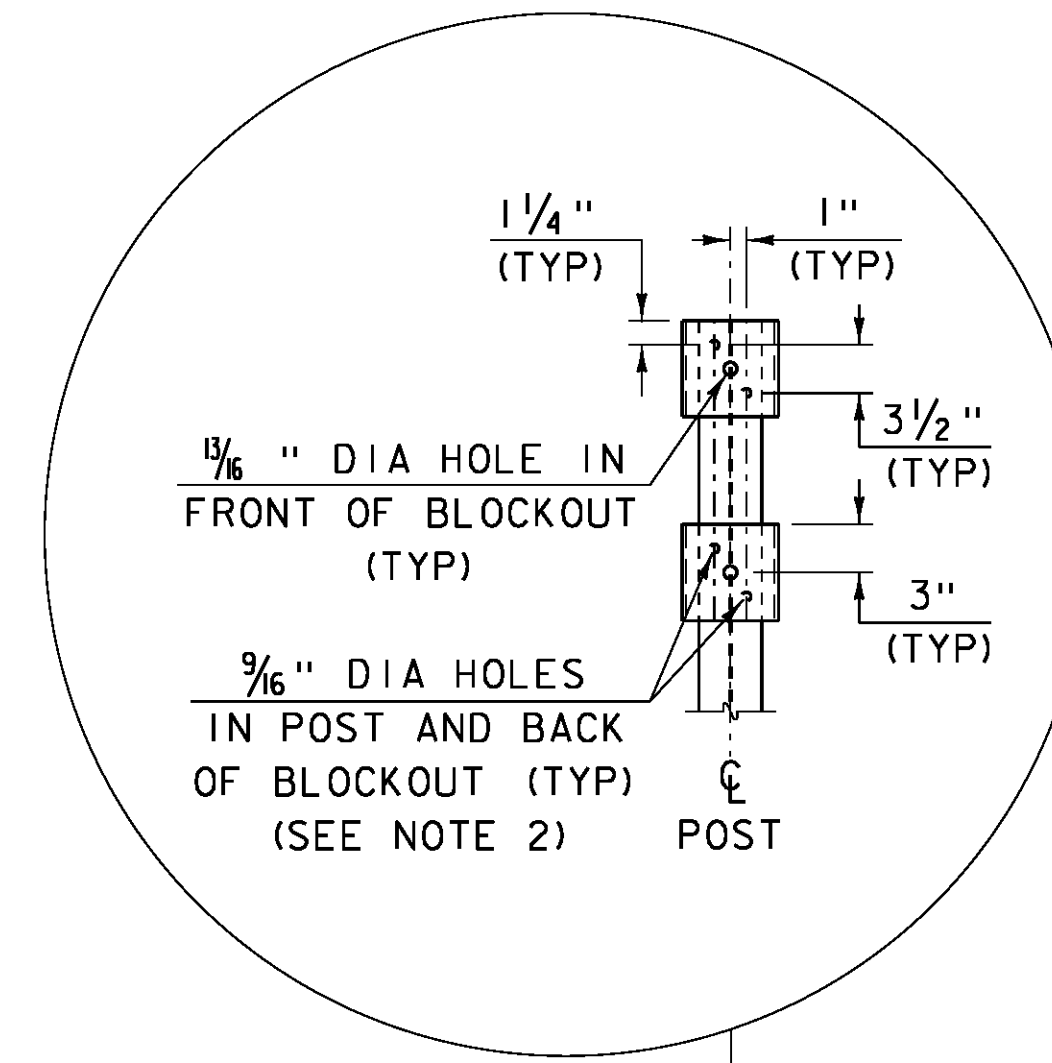
**WELD DETAIL FOR SPLICE TUBE**

NOT TO SCALE



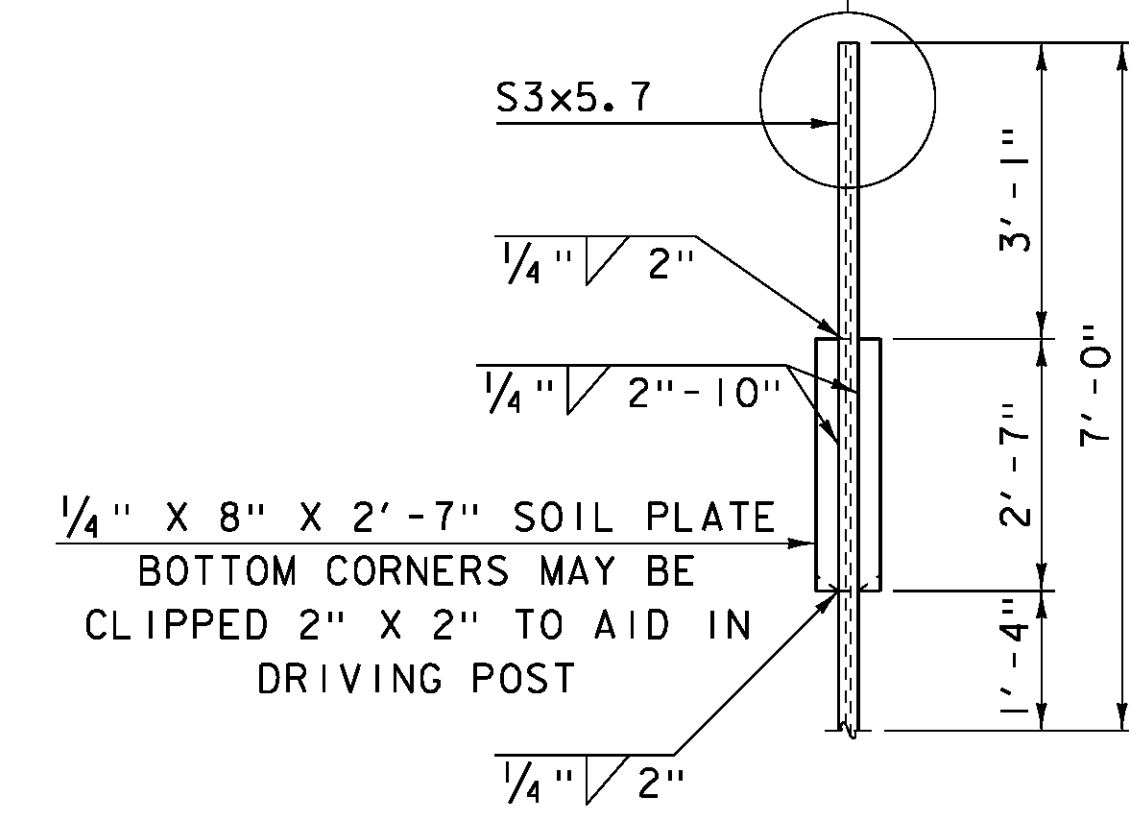
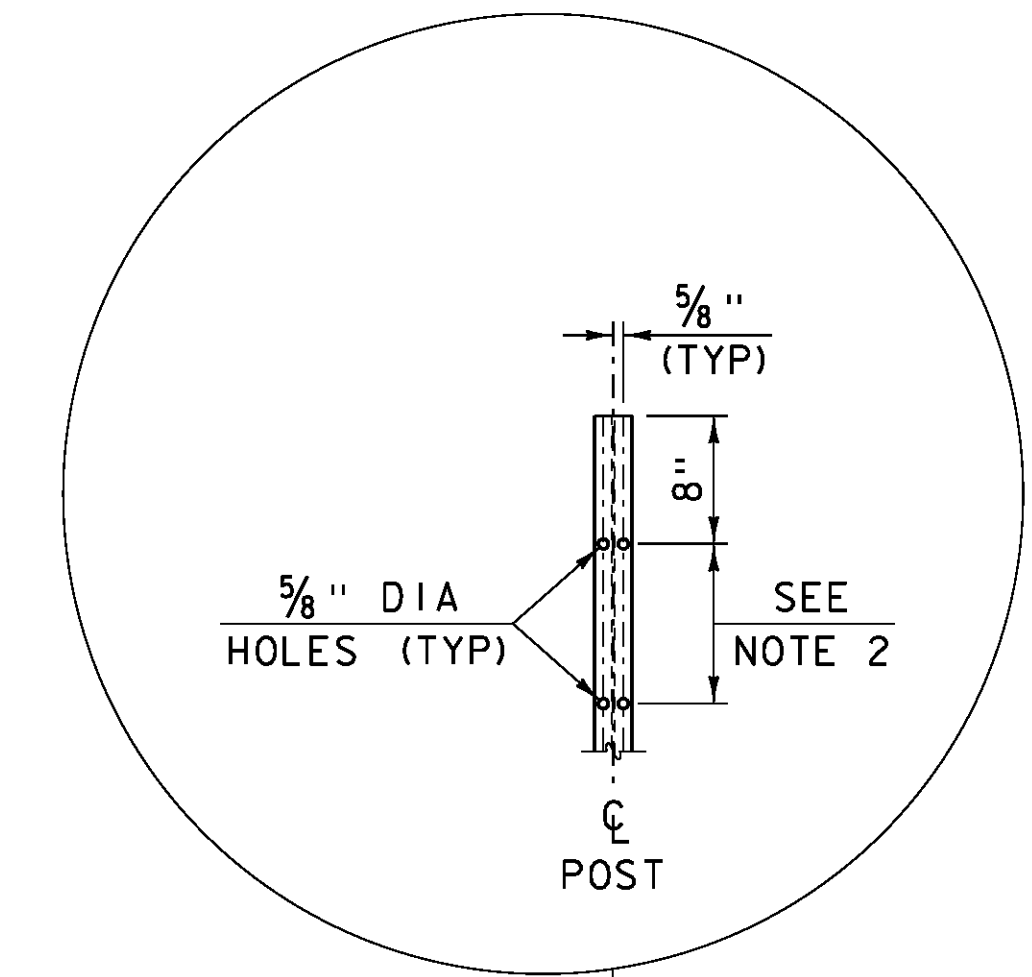
**HEAVY POST ELEVATION**

NOT TO SCALE



**HEAVY POST DETAIL**

NOT TO SCALE



**TRANSITION POST DETAIL**

NOT TO SCALE

**NOTES:**

1. PROTRUSIONS CAUSED BY WELDING OR GALVANIZING ARE NOT PERMITTED ON THE ADJOINING SURFACES OF THE BOX BEAM RAILS, SPLICE TUBES AND FILL PLATES.
2. HOLES IN POST FOR LOWER RAIL MAY BE LOCATED AND DRILLED IN THE FIELD. IF SO, GALVANIZING SHALL BE REPAIRED.

PROJECT NAME: ROYALTON  
PROJECT NUMBER: BRS 0147 (13)

FILE NAME: \BR 27\86e055rail.27.dgn PLOT DATE: 08-OCT-2013  
PROJECT LEADER: C. CARLSON DRAWN BY: D. PETERSON  
DESIGNED BY: D. PETERSON CHECKED BY: C. CARLSON  
BRIDGE 27 APPROACH RAIL DETAILS (2) SHEET 49 OF 186