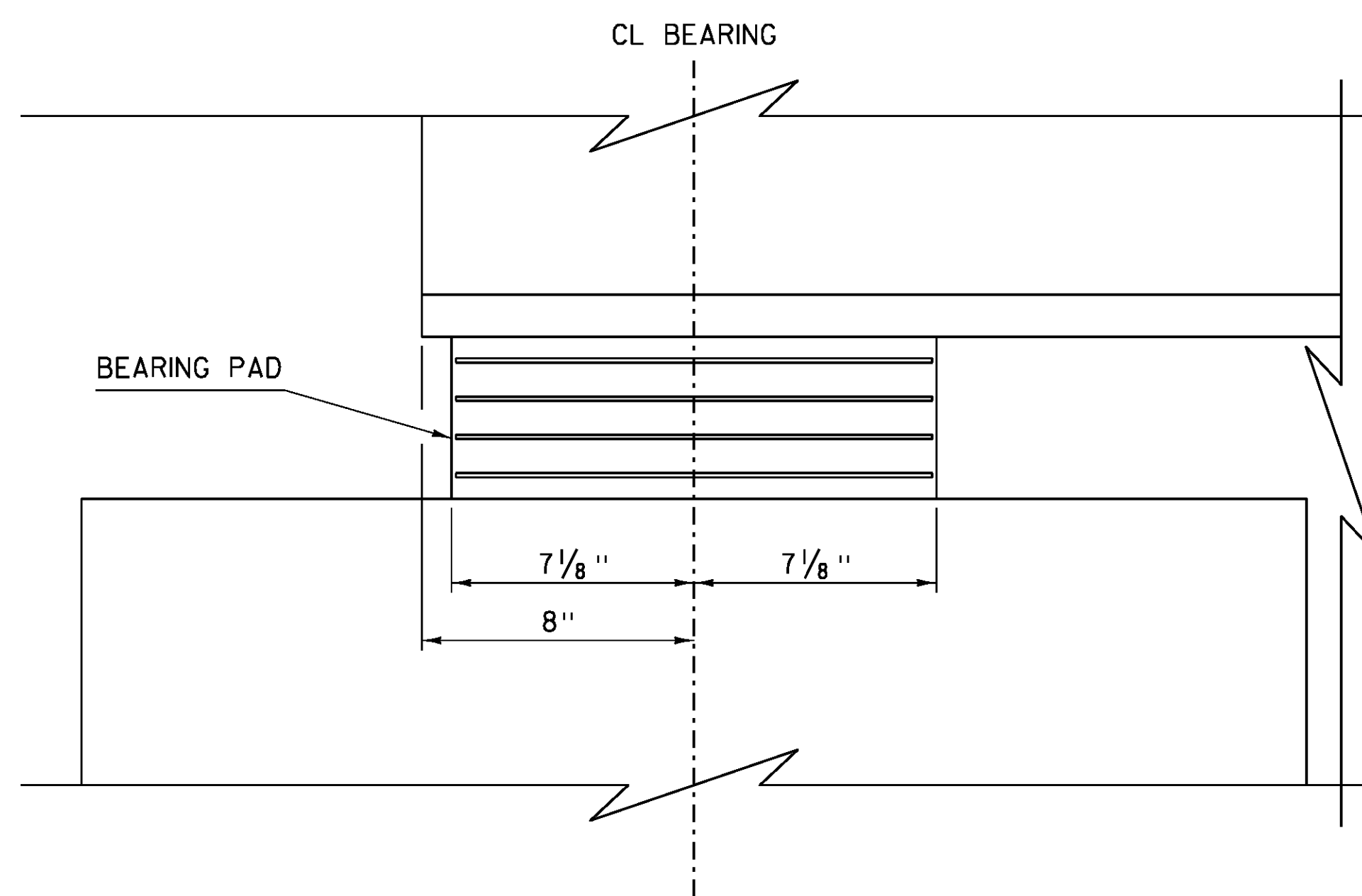


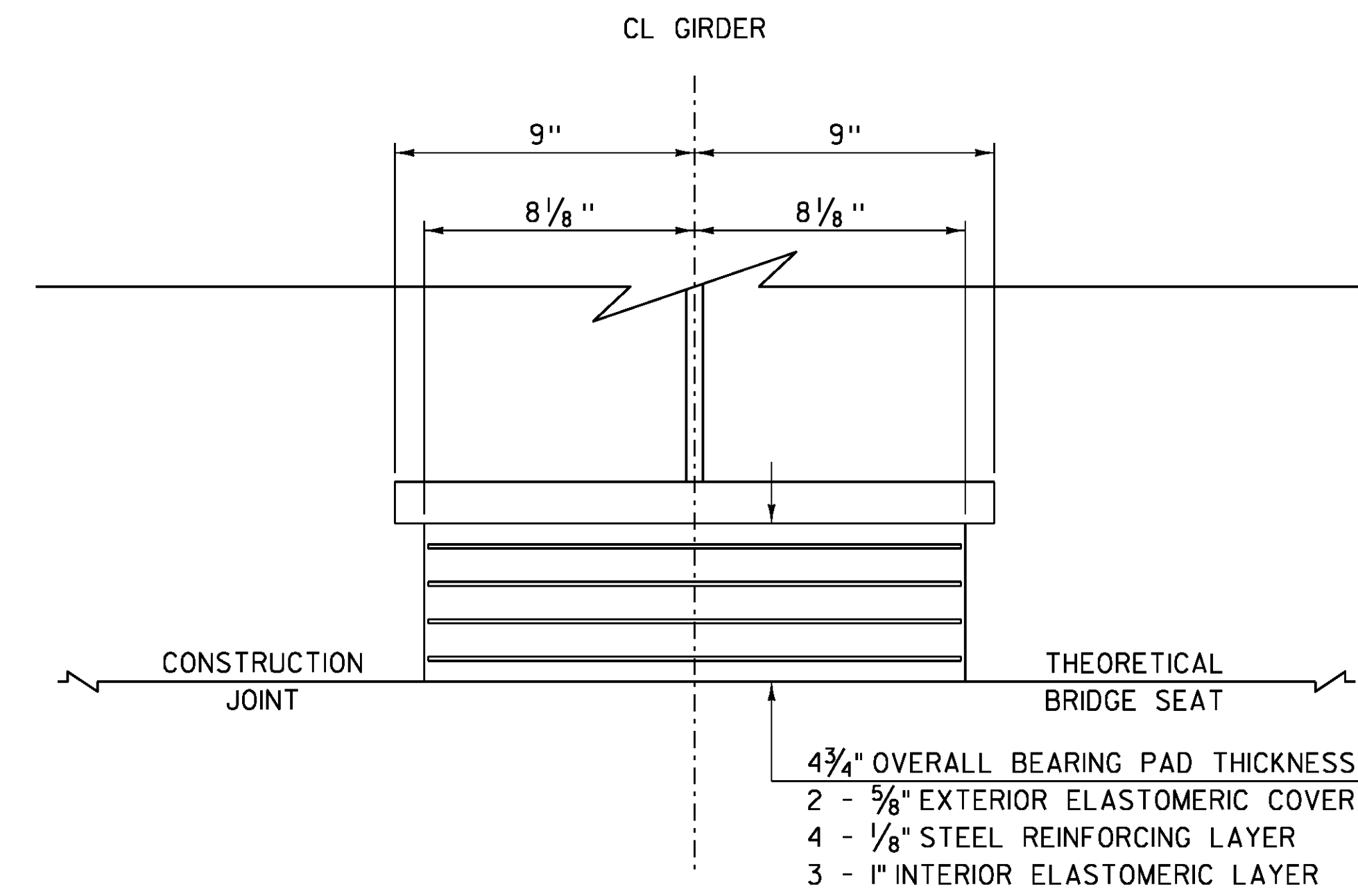
BEARING PLAN

SCALE: 3" = 1'-0"



BEARING ELEVATION

SCALE: 3" = 1'-0"



BEARING SECTION

SCALE: 3" = 1'-0"

BEARING DEVICE NOTES

1. BEARINGS SHALL BE PAID FOR UNDER THE ITEM 531.17 "BEARING DEVICE ASSEMBLY, STEEL REINFORCED ELASTOMERIC PAD" AND SHALL CONFORM TO APPLICABLE SUBSECTIONS OF SECTIONS 531 AND 731.
2. ALL REINFORCEMENT BETWEEN LAYERS OF ELASTOMERIC SHALL BE STEEL ASTM A36. ALL INTERNAL STEEL PLATES SHALL BE SAND BLASTED AND FREE OF COATINGS, RUST, AND MILL SCALE. THE PLATES SHALL BE FREE OF SHARP EDGES AND BURRS.
3. STEEL REINFORCED ELASTOMERIC PAD BEARINGS SHALL HAVE A MINIMUM OF 1/8" EDGE SEAL OF ELASTOMER INTEGRAL WITH THE BEARING OVER ALL INTERNAL PLATES.
4. FOR ELASTOMERIC BEARINGS, ALL MATERIALS SHALL CONFORM TO AASHTO M251M/M251.

PROJECT NAME: ROYALTON	PLOT DATE: 08-OCT-2013
PROJECT NUMBER: BRS 0147(I3)	DRAWN BY: N. COVEY
FILE NAME: s86e055sup.dgn	CHECKED BY: D. PETERSON
PROJECT LEADER: C. CARLSON	SHEET 38 OF 186
DESIGNED BY: D. PETERSON	
BRIDGE 27 BEARING DETAILS	