

CONSTRUCT 5' WIDE PAVED APRON

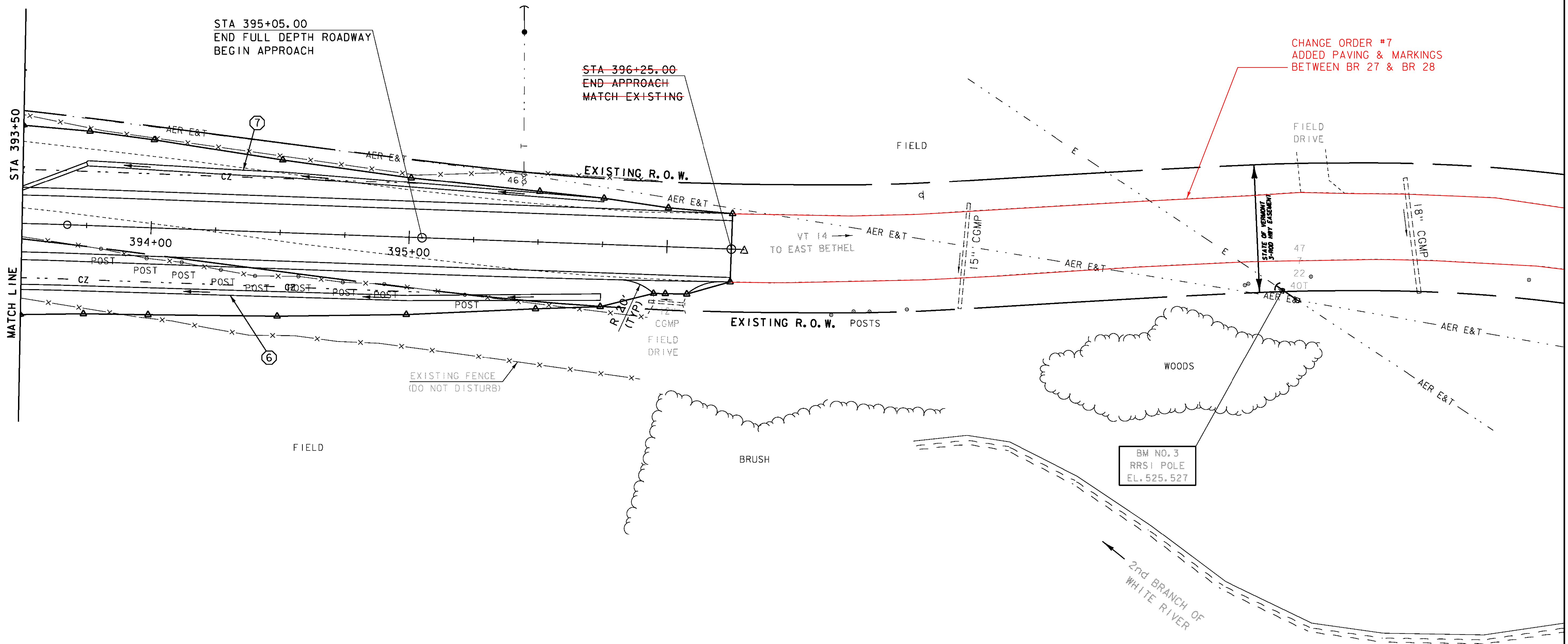
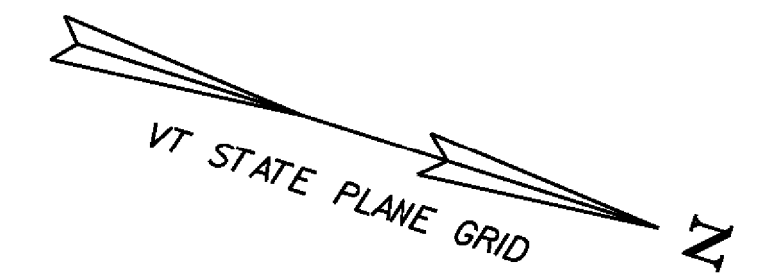
VT 14 STA 395+82.2 RT - VT 14 STA 396+21.4 RT

REMOVAL AND DISPOSAL OF GUIDE POSTS

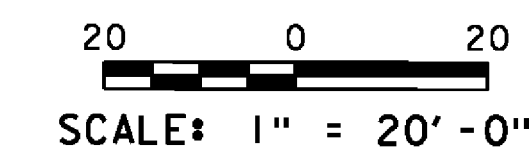
- VT 14 STA 393+80.9 RT
- VT 14 STA 393+98.7 RT
- VT 14 STA 394+12.4 RT
- VT 14 STA 394+27.6 RT
- VT 14 STA 394+40.9 RT
- VT 14 STA 394+57.7 RT
- VT 14 STA 394+74.9 RT
- VT 14 STA 394+91.0 RT
- VT 14 STA 395+22.4 RT

REMOVING AND RESETTING FENCE

VT 14 STA 393+50.0 RT - VT 14 STA 394+73.3 RT
 VT 14 STA 393+50.0 RT - VT 14 STA 395+93.4 RT
 VT 14 STA 393+50.0 RT - VT 14 STA 395+95.7 LT



- ⑥ VT 14 STA 393+50.0 RT - VT 14 STA 395+75.0 RT
CONSTRUCT NEW GRASS-LINED DITCH
- ⑦ VT 14 STA 393+75.0 LT - VT 14 STA 395+75.0 LT
CONSTRUCT NEW GRASS-LINED DITCH



PROJECT NAME:	ROYALTON
PROJECT NUMBER:	BRS 0147(13)
FILE NAME:	\\BR 27\s86e055bdr_27.dgn
PROJECT LEADER:	C. CARLSON
DESIGNED BY:	D. PETERSON
BRIDGE 27 LAYOUT (3)	
PLOT DATE:	08-OCT-2013
DRAWN BY:	L. BULLOCK
CHECKED BY:	C. CARLSON
SHEET	23 OF 186