

CONSTRUCT 5' WIDE PAVED APRON

VT 14 STA 388+02.2 LT - VT 14 STA 388+43.1 LT

CONSTRUCT GRAVEL DRIVE (12' WIDE)

VT 14 STA 388+25.0 LT
DRIVE NO.3 STA 30+32.6 LT

CONSTRUCT PAVED DRIVE (10' WIDE)

VT 14 STA 392+31.5 LT

SPECIAL PROVISION (REINFORCED SOIL SLOPE) W/ STONE FILL, TYPE III

VT 14 STA 388+00.0 RT - VT 14 STA 388+50.0 RT

RELOCATE MAILBOX, SINGLE SUPPORT

FROM DRIVE NO.3 STA 30+50.5 RT TO VT 14 STA 392+50.0 LT.

REMOVING AND RESETING FENCE

VT 14 STA 390+78.7 LT - VT 14 STA 392+04.7 LT
VT 14 STA 390+89.7 LT - VT 14 STA 393+50.0 RT
VT 14 STA 391+48.7 RT - VT 14 STA 393+50.0 RT
VT 14 STA 393+44.9 LT - VT 14 STA 393+50.0 LT

BOX BEAM GUARDRAIL

VT 14 STA 388+00.0 RT - VT 14 STA 389+66.8 RT
VT 14 STA 388+57.9 LT - VT 14 STA 389+56.3 LT
VT 14 STA 391+63.1 LT - VT 14 STA 391+89.7 LT
VT 14 STA 391+73.7 RT - VT 14 STA 392+74.1 RT

MANUFACTURED TERMINAL SECTION, TANGENT

VT 14 STA 388+00.0 LT - VT 14 STA 388+02.6 LT
VT 14 STA 388+44.0 LT - VT 14 STA 388+57.9 LT
VT 14 STA 391+89.7 LT - VT 14 STA 392+03.5 LT
VT 14 STA 391+74.1 RT - VT 14 STA 392+88.3 RT

REMOVAL AND DISPOSAL OF GUARDRAIL

VT 14 STA 389+34.8 LT - VT 14 STA 389+72.9 LT
VT 14 STA 389+46.6 LT - VT 14 STA 389+83.8 LT
VT 14 STA 390+78.7 LT - VT 14 STA 391+29.2 LT
VT 14 STA 390+89.7 LT - VT 14 STA 391+40.1 LT

REMOVAL AND DISPOSAL OF GUIDE POSTS

DRIVE NO.3 STA 30+58.3 LT
DRIVE NO.3 STA 30+58.5 RT
VT 14 392+93.4 LT
VT 14 393+09.5 LT
VT 14 393+44.3 RT

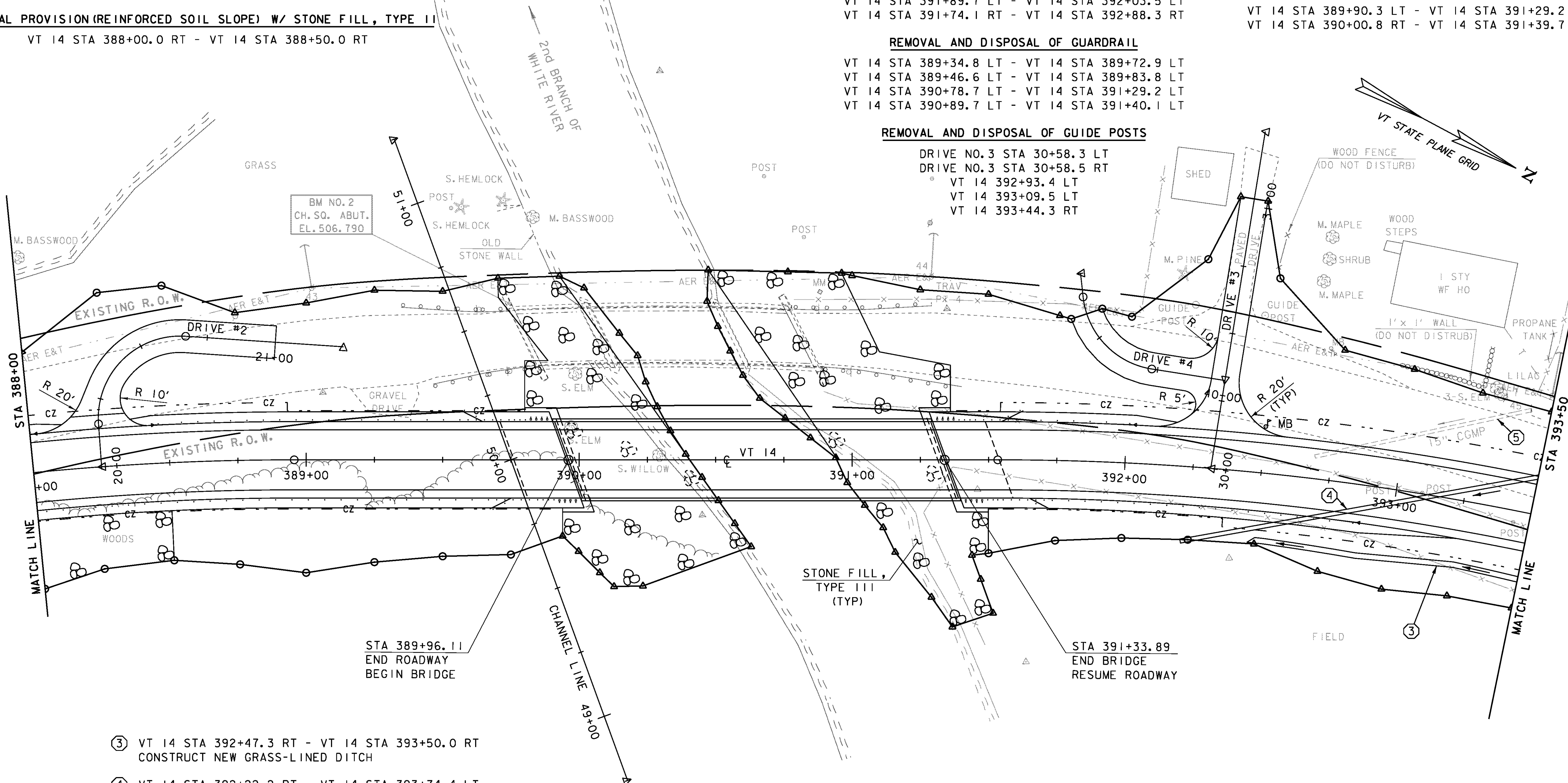
SPECIAL PROVISION (GUARDRAIL APPROACH SECTION TO CONCRETE COMBINATION BRIDGE RAILING)

VT 14 STA 389+56.3 LT - VT 14 STA 389+90.3 LT
VT 14 STA 389+66.8 RT - VT 14 STA 390+00.8 RT
VT 14 STA 391+29.2 LT - VT 14 STA 391+63.1 LT
VT 14 STA 391+39.7 RT - VT 14 STA 391+73.7 RT

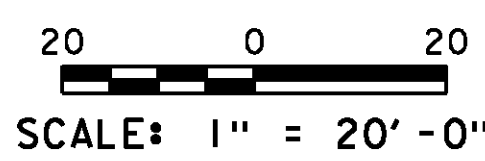
BRIDGE RAILING, GALVANIZED STEEL

TUBING/CONCRETE COMBINATION

VT 14 STA 389+90.3 LT - VT 14 STA 391+29.2 LT
VT 14 STA 390+00.8 RT - VT 14 STA 391+39.7 RT



- ③ VT 14 STA 392+47.3 RT - VT 14 STA 393+50.0 RT
CONSTRUCT NEW GRASS-LINED DITCH
- ④ VT 14 STA 392+22.2 RT - VT 14 STA 393+74.4 LT
NEW 18" X 160' PCCSP (0.064), CAAP (0.060),
RCP CL. III OR CPEP (SL) OPTION
- ⑤ VT 14 STA 392+68.9 LT - VT 14 STA 393+43.0 LT
EXISTING 15" CGMP & INLET HEADWALL - REMOVE



EXISTING BRIDGE DATA

THREE-SPAN CONCRETE T-BEAM SUPERSTRUCTURE
WITH ASPHALT OVERLAY

CAST-IN-PLACE CONCRETE ABUTMENTS, WINGWALLS
AND PIERS

BRIDGE LENGTH: 105'
BRIDGE WIDTH (FASCIA TO FASCIA): 23.7'
VERTICAL CLEARANCE UNDER BRIDGE: 12'

PROJECT NAME:	ROYALTON	FILE NAME:	\BR 27\s86e055bdr_27.dgn	PLOT DATE:	08-OCT-2013
PROJECT NUMBER:	BRS 0147(I3)	PROJECT LEADER:	C. CARLSON	DRAWN BY:	L. BULLOCK
		DESIGNED BY:	D. PETERSON	CHECKED BY:	C. CARLSON
		BRIDGE 27 LAYOUT (2)		SHEET	22 OF 186