

DRIVE NO. 2 CURVE DATA NO. 1

Δ = 97°57'59" RT
 D = 190°59'09"
 R = 30.00'
 T = 34.49'
 L = 51.30'
 E = 15.71'

CHANNEL LINE POE

STA 51+25.00
 N = 489047.3263
 E = 1617762.8914

DRIVE NO. 4 CURVE DATA

Δ = 74°52'05" RT
 D = 190°59'09"
 R = 30.00'
 T = 22.96'
 L = 39.20'
 E = 7.78'

DRIVE NO. 4 POE

STA 40+75.00
 N = 489292.2799
 E = 1617687.7131

DRIVE NO. 3 POE

STA 31+25.00
 N = 489327.4629
 E = 1617609.9639

DRIVE NO. 2 PI NO. 1

STA 20+50.25 BK =
 STA 20+32.56 AH
 Δ = 97°57'59" RT
 N = 488982.5450
 E = 1617876.7814

DRIVE NO. 2 PT NO. 1

STA 20+67.05
 N = 489013.9771
 E = 1617862.5820

DRIVE NO. 2 PC NO. 1

STA 20+15.76
 N = 489000.9636
 E = 1617905.9423

DRIVE NO. 2 POE

STA 21+25.00
 N = 489066.7842
 E = 1617838.7264

DRIVE NO. 4 PI

STA 40+50.10 BK=
 STA 40+43.37 AH
 Δ = 74°52'05" RT
 N = 489310.1178
 E = 1617713.8365

DRIVE NO. 4 PT

STA 40+66.33
 N = 489297.1677
 E = 1617694.8712

DRIVE NO. 3 STA 30+32.60 =

DRIVE NO. 4 STA 40+00.00 POB
 Δ = 90°16'12" LT
 N = 489357.4293
 E = 1617697.3659

VT 14 PI NO. 2

STA 392+60.88 BK =
 STA 392+60.01 AH
 Δ = 12°35'05" RT
 N = 489392.5190
 E = 1617711.5550

DRIVE NO. 4 PC

STA 40+27.13
 N = 489331.8061
 E = 1617706.2862

VT 14 PC NO. 2

STA 391+53.37
 N = 489297.7064
 E = 1617762.2384

VT 14 STA 392+31.49 =

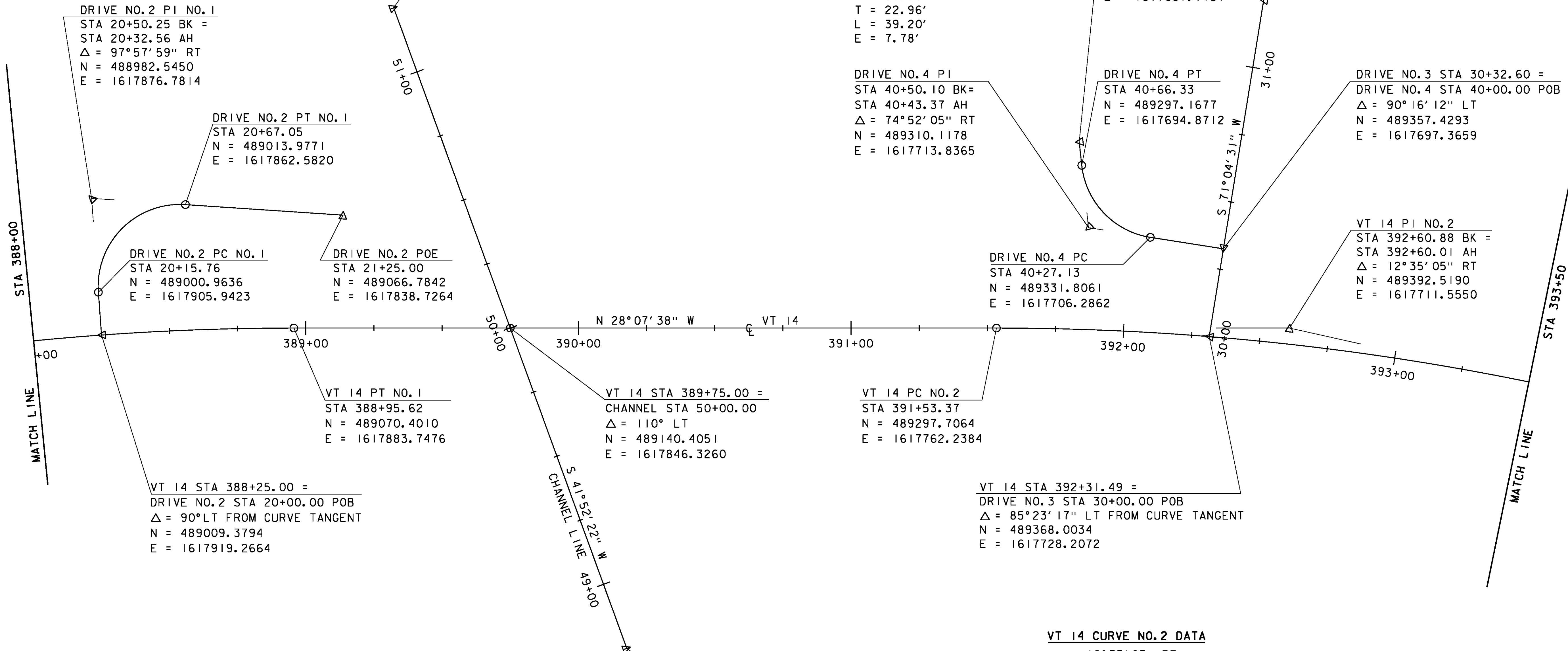
DRIVE NO. 3 STA 30+00.00 POB
 Δ = 85°23'17" LT FROM CURVE TANGENT
 N = 489368.0034
 E = 1617728.2072

VT 14 CURVE NO. 2 DATA

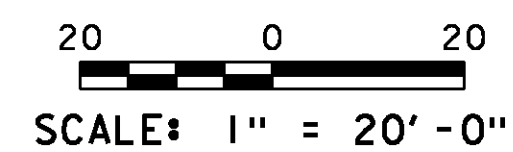
Δ = 12°35'05" RT
 D = 5°52'35"
 R = 975.00'
 T = 107.51'
 L = 214.15'
 E = 5.91'

CHANNEL LINE POB

STA 48+75.00
 N = 489233.4838
 E = 1617929.7607



DATUM	
VERTICAL	NAVD 88
HORIZONTAL	NAD 83 (96)
ADJUSTMENT	Compass



PROJECT NAME:	ROYALTON
PROJECT NUMBER:	BRS 0147(13)
FILE NAME:	\BR 27\s86e055alnldr_27.dgn
PROJECT LEADER:	C. CARLSON
DESIGNED BY:	D. PETERSON
BRIDGE 27 ALIGNMENT LAYOUT (2)	
PLOT DATE:	08-OCT-2013
DRAWN BY:	L. BULLOCK
CHECKED BY:	C. CARLSON
SHEET	19 OF 186