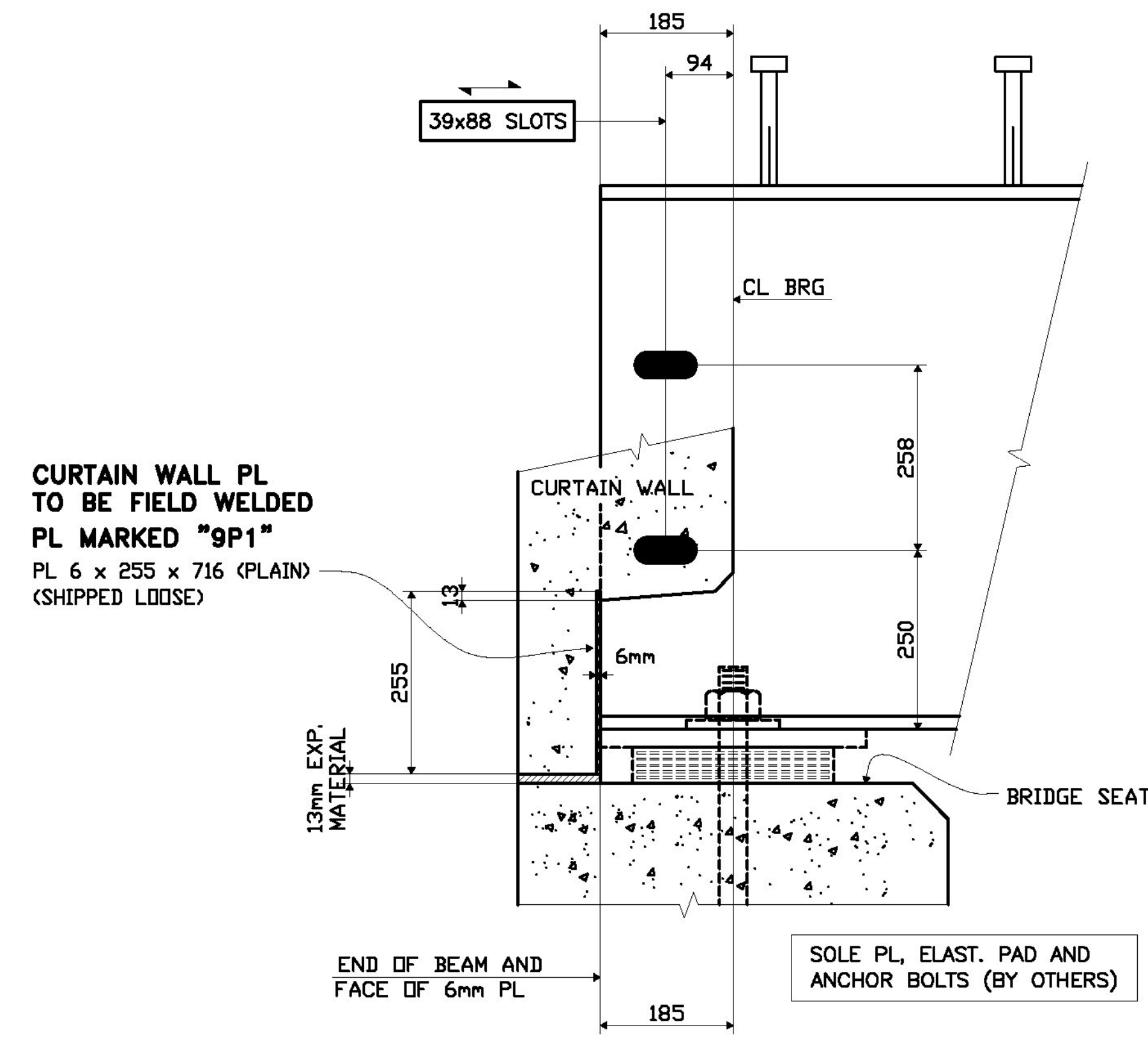


NOTE 1
 FIELD DRILL 24# (15/16)" HOLES FOR M22# (7/8)" H.S. BOLTS IN THE CONN. PL USING THE SHOP DRILLED HOLES IN THE FIELD INSTALLED DIAPHRAGM AS A TEMPLATE. (ONE END OF DIAPH. WHERE INDICATED)

SECTION A-A
 TYP. SECTION LOOKING UPSTATION



SECT. B (SHOWN)
SECT. C (OPP HAND)

Received Date: 3/25/11
 Checked By: Hiram Salls
 Approval Type: Approved As Noted
 Approved By: Chris Williams
 Date: 4/13/11

3							
2							
1							
REV. NO.	DATE	REVISION					
ERECTION PLAN							
PROJECT No. BRF 037-2(8) REPLACEMENT OF BRIDGE No. 71 TOWN OF EAST MONTPELIER, WASHINGTON COUNTY, VT							
FOSTER . PRECISE 3 FARM LANE GEORGETOWN, MA 01833-1843							
OWNER: STATE OF VERMONT AGENCY OF TRANSPORTATION CONTRACTOR: J.R. SLAW							
DRAWN BY	CHECKED BY	APP.	SHOP	DIST.	CONTRACT NO.	SHEET NO.	
PDC/WS 03-2011	PDC/SB 03-2011				3561	E2	