

GENERAL NOTES

SPECIFICATIONS

- ALL MATERIAL AND CONSTRUCTION SHALL CONFORM TO THE STATE OF VERMONT AGENCY OF TRANSPORTATION STANDARD SPECIFICATIONS FOR CONSTRUCTION, DATED 2006 AND ITS LATEST REVISIONS.
- THE AASHTO LRFD BRIDGE DESIGN SPECS. (4TH EDITION), DATED 2007 AND ITS LATEST REVISIONS.
- THE AASHTO LRFD BRIDGE CONSTRUCTION SPECS. (2ND EDITION), DATED 2004 AND ITS LATEST REVISIONS.
- ALL WELDING SHALL CONFORM TO THE PROVISIONS OF SUBSECTION 506.10 OF VTAOT. (BRIDGE WELDING CODE D1.5 ~LATEST EDITION)

MATERIAL SPECIFICATIONS

- ALL STRUCTURAL STEEL SHALL CONFORM TO THE REQUIREMENTS OF AASHTO DESIGNATION M270M GRADE 345W (WEATHERING STEEL PER SUBSECTION 714.03), UNCOATED.
- ALL BOLTS SHALL CONFORM TO AASHTO M164 (ASTM A325) TYPE 3.
- ALL BOLTS SHALL BE M22 (ϕ) HIGH STRENGTH HEAVY HEX HEAD IN STD. HOLES 24mm (1 1/8") U.O.N.

FABRICATION

- CVN- INDICATES CHARPY V-NOTCH TESTING REQUIRED (ZONE 2) PER STD. SPECS. SUBSECTION 714.01.
- MEMBERS WITH "CVN" REQUIREMENTS ARE: BEAMS AND DIAPH. CONNECTION PLATES.
- THE BOTTOM FLANGE OF STEEL BEAMS AT BEARING AREAS SHALL BE SHOP STRAIGHTENED AS NECESSARY TO PROVIDE UNIFORM CONTACT BETWEEN THE BEAM FLANGE & THE BEARING AT THE BRIDGE SEAT.
- STRUCTURAL ROLLED BEAMS SHALL BE CAMBERED TO THE AMOUNT SHOWN ON THE PLANS WITH A TOLERANCE OF 1/2" (-0,+12) FOR BEAMS 50'-0 (15M) OR LESS.
- FOR BEAMS GREATER THAN 50'-0 (15M), THE PLUS TOLERANCE OF 1/2" (12mm) SHALL BE INCREASED BY 1/8" (3mm) FOR EACH 10'-0 (3M) OR FRACTION THEREOF IN EXCESS OF 50'-0 (15M).
- WELD ELECTRODES SHALL BE: ER80S-Ni1

CLEANING

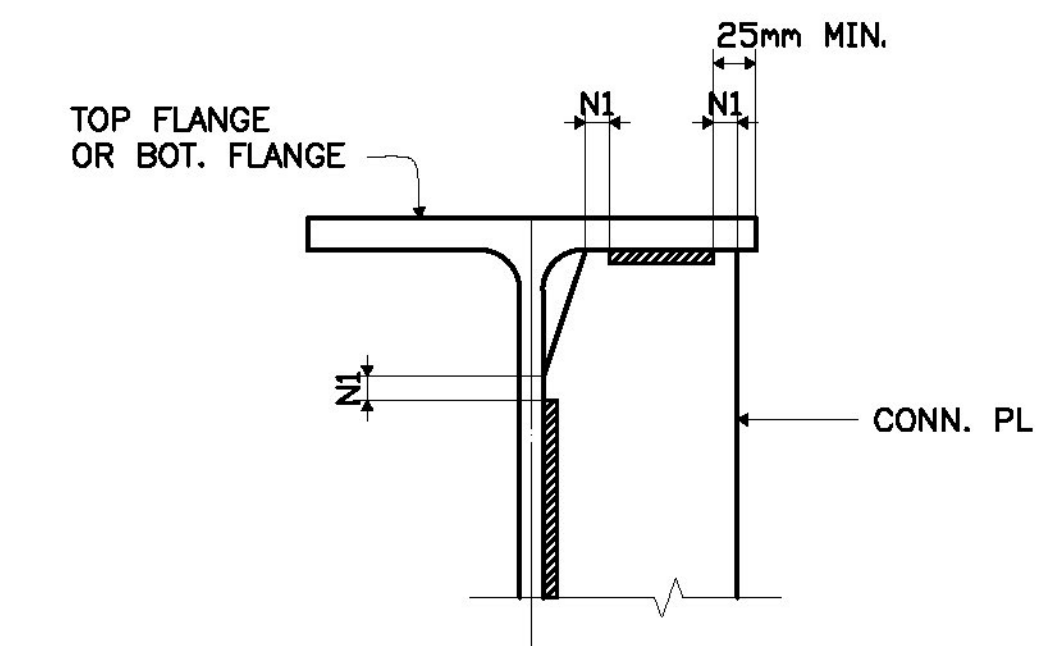
SURFACE PREPARATION
 SSPC-SP10 (NEAR WHITE BLAST CLEANING).
 PRIOR TO BLAST CLEANING, ALL OIL, GREASE OR OTHER FOREIGN MATTER SHALL BE REMOVED BY SOLVENT CLEANING (SSPC-SP1).

SHOP PAINTING:

NO PAINT REQUIRED FOR ALL STRUCTURAL STEEL.

INDEX OF DRAWINGS

SHEET	DESCRIPTION
GN1	GENERAL NOTES
E1, E2	STEEL ERECTION PLAN
P1	JOB STANDARD DETAILS
1 - 8	BEAM SUB-ASS'Y. DETAILS
9	DIAPHRAGM & MISC. DETAILS
10	SHOP ASSEMBLY DIAGRAMS



N1 = NO WELD FOR 10mm (3/8") MIN. TO 22mm (7/8") MAX.
 EXCEPT MUST MAINTAIN 25mm (1") FROM EDGE OF FLG.

TYP. WELDING DETAIL

Received Date: 3/25/11
 Checked By: Hiram Salls
 Approval Type: Approved
 Approved By: Chris Williams
 Date: 4/13/11

REV. NO.	DATE	REVISION
3		
2		
1		
GENERAL NOTES		
PROJECT No. BRF 037-2(8) REPLACEMENT OF BRIDGE No. 71 TOWN OF EAST MONTPELIER, WASHINGTON COUNTY, VT		
FOSTER . PRECISE 3 FARM LANE GEORGETOWN, MA 01833-1843		
OWNER: STATE OF VERMONT AGENCY OF TRANSPORTATION CONTRACTOR: J.R. SLAW		
DRAWN BY	CHECKED BY	APP. SHOP DIST. CONTRACT NO. SHEET NO.
PDC/WS 03-2011	PDC/SB 03-2011	3561 GN1