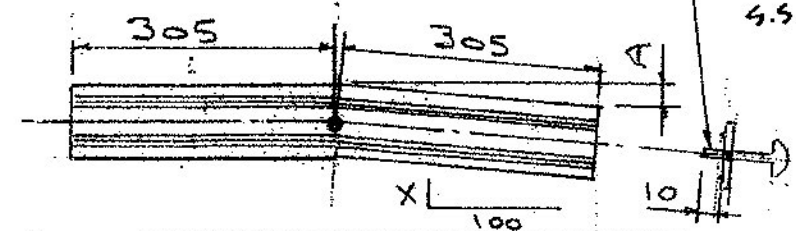
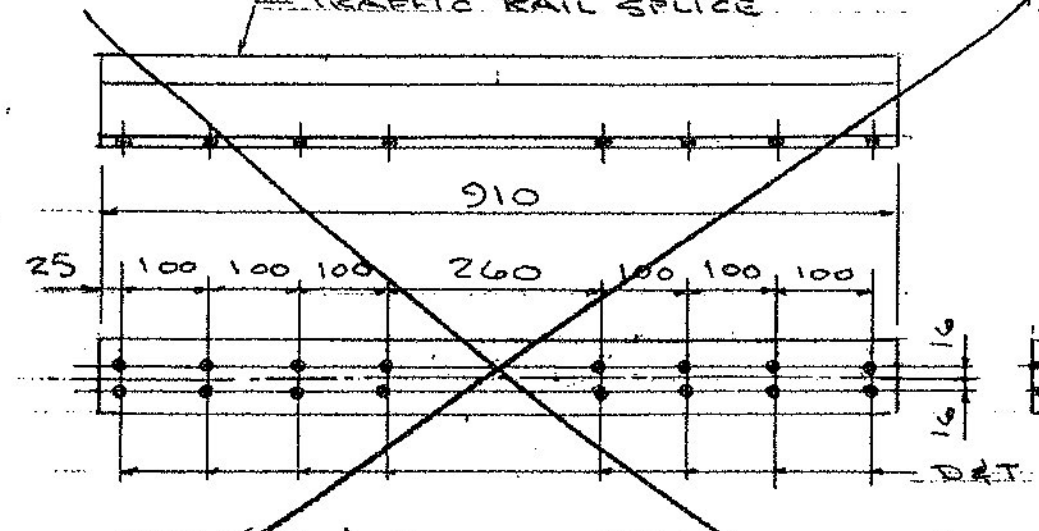


2x20 AL. PIN
DRIVE FIT

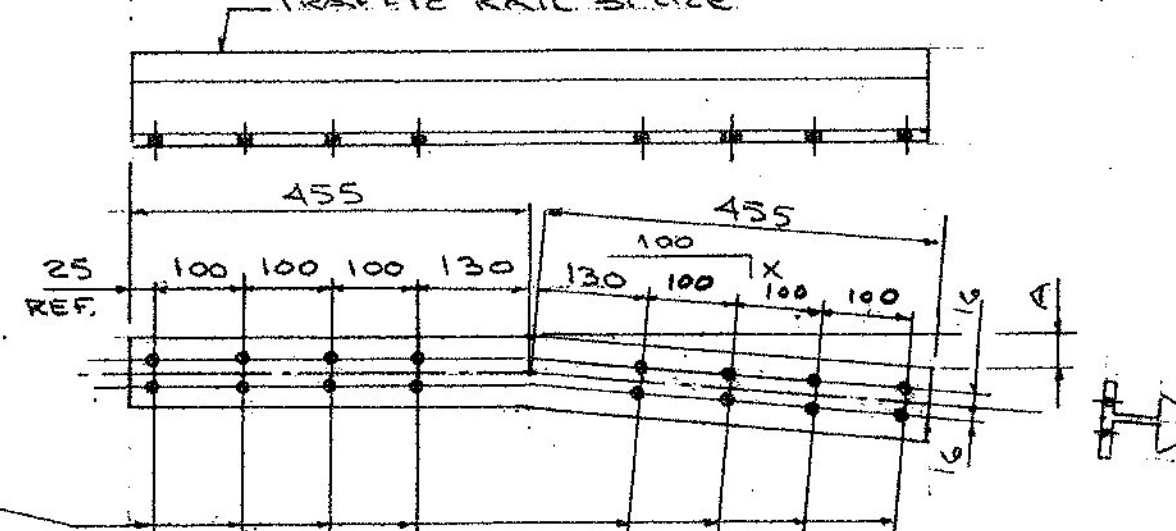


1/4-20 UNC x 3/4"
4.9 BT SCREW

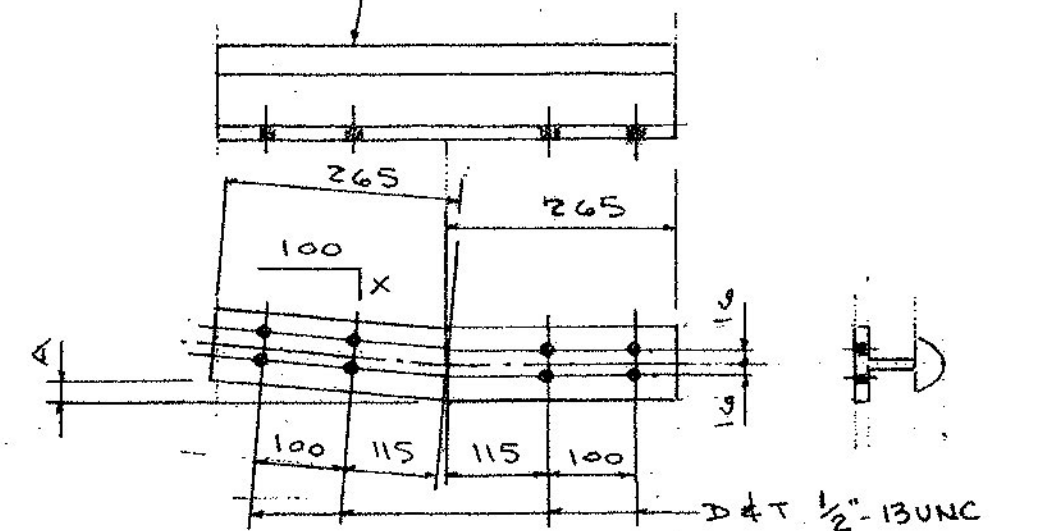
QUAN	MK	X	A
4	S3	8.9	27



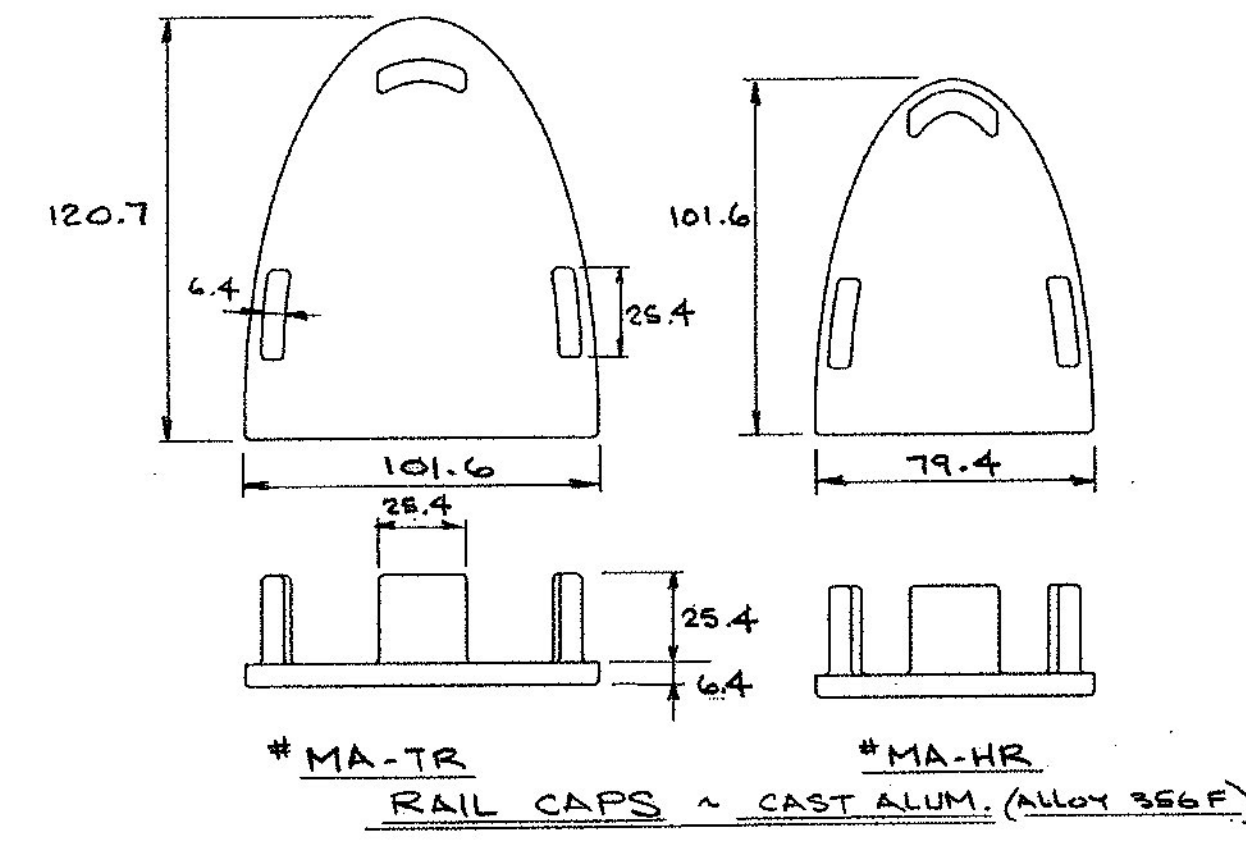
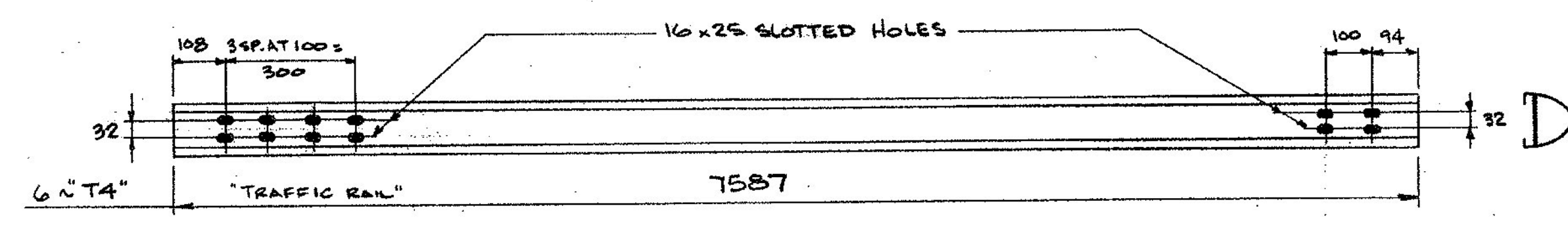
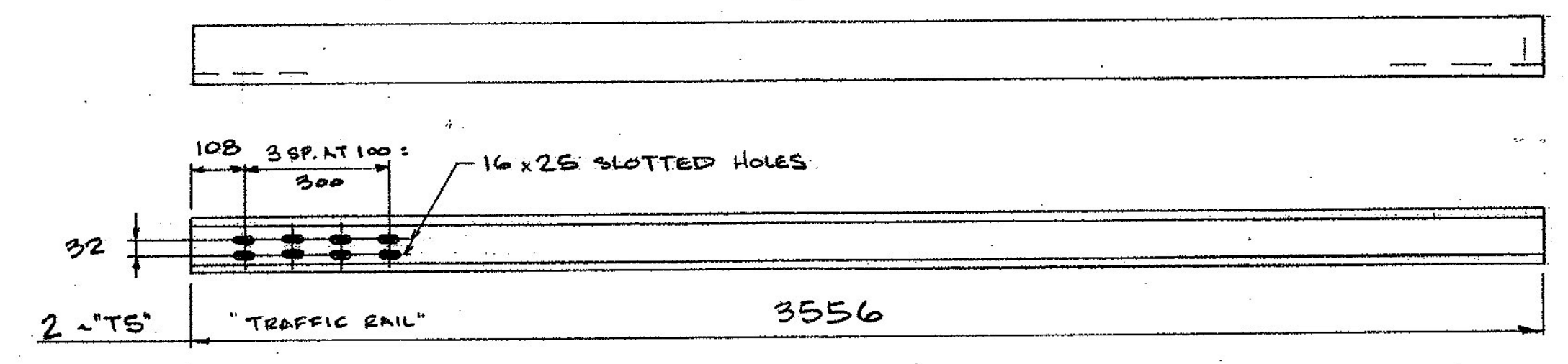
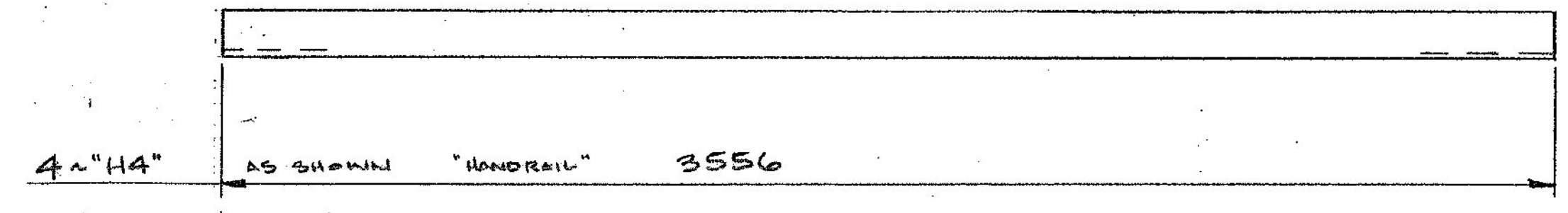
Splice TSI



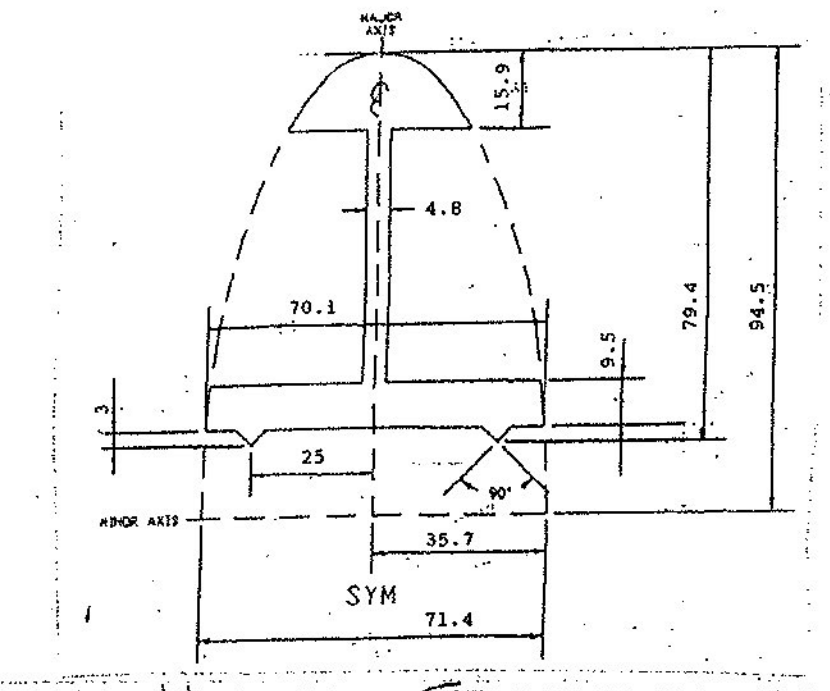
QUAN	MK	X	A
4	S4	4.4	20
4	S5	1	5



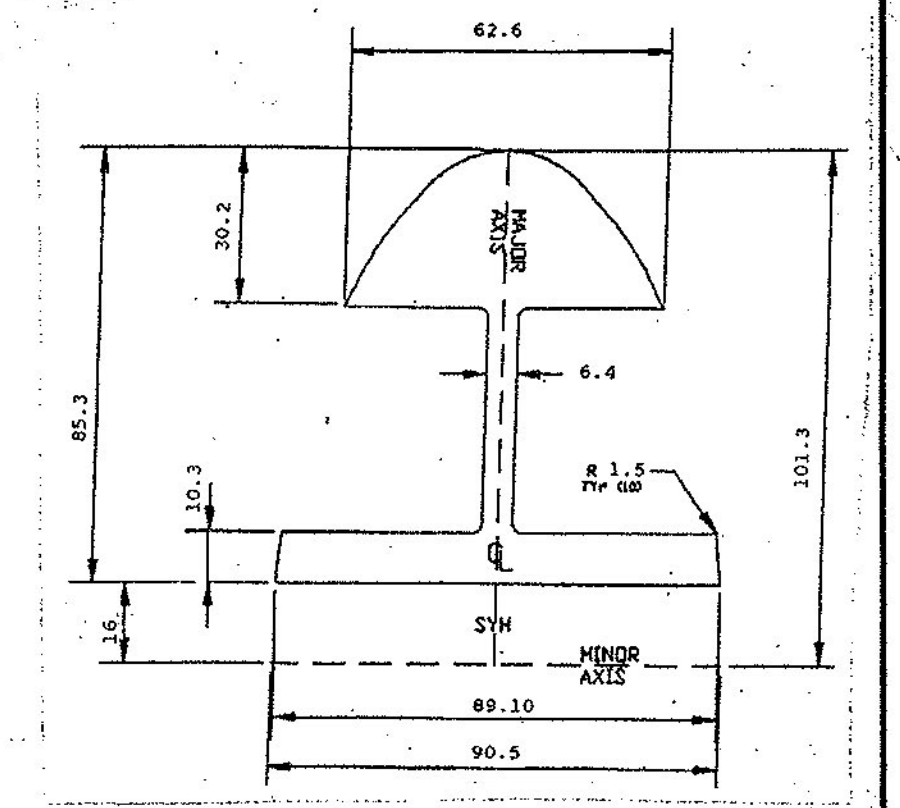
QUAN	MK	X	A
3	S6	4.4	12
3	S7	1	3



#MA-TR
RAIL CAPS ~ CAST ALUM. (ALLOY 356E)



HANDRAIL SPLICE
EXTRUSION
ALLOY 6061-T6



TRAFFIC RAIL SPLICE
EXTRUSION
ALLOY 6061-T6

Received Date: 6/1/11
Checked By: Hiram Salls
Reviewed By: Rob Young
Approval Type: Approved
Approved By: Chris Williams
Date: 6/13/11

FASTENERS ARE IN ENGLISH UNITS		DIMENSIONS ARE GIVEN IN MILLIMETERS	
AUCIELLO IRON WORKS INC 560 MAIN ST. HUDSON, MA (978) 568-8382			
VT. AGENCY OF TRANSPORTATION EAST MONTPELIER, VT. VT. RT. 14, BRIDGE # 17 BRF 037-2(B)			
AL. BRIDGE & APPROACH RAILING			
SURFACE PREP: NONE		FINISH: MILL	
DR: FR. LAFAYETTE, INC.			
CHK: 5-25-11		DWG. NO. BR-3006	
ISSUE	DATE	DESCRIPTION	BY
1	5-25-11	FOR APPROVAL	AB/7044-1002
			SHEET 2-P2 OF