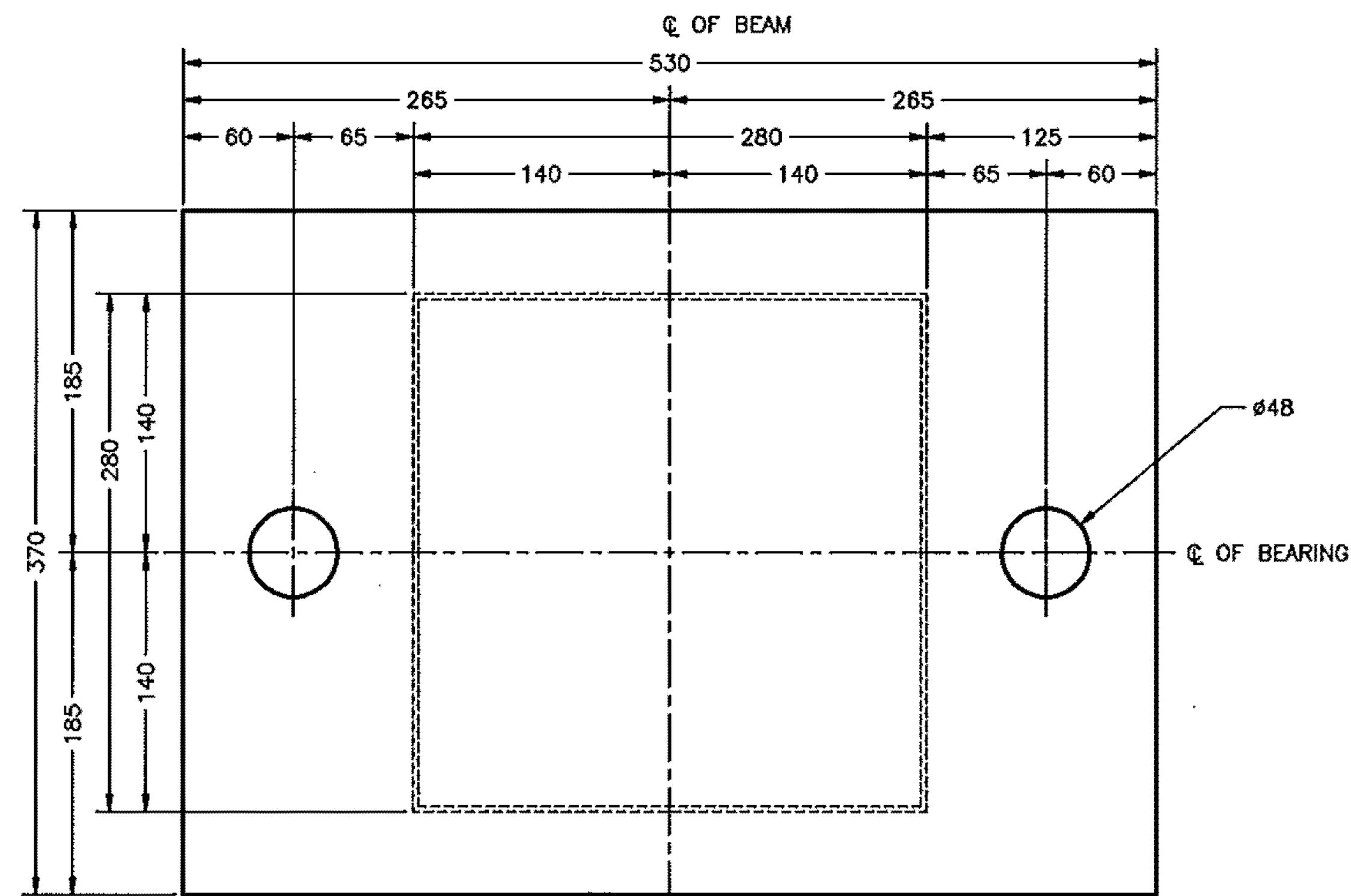


REVISIONS				
ZONE	REV	DESCRIPTION	DATE	APPROVED
--	A	PER ENGINEER'S MARK	3/4/11	C.A.M.

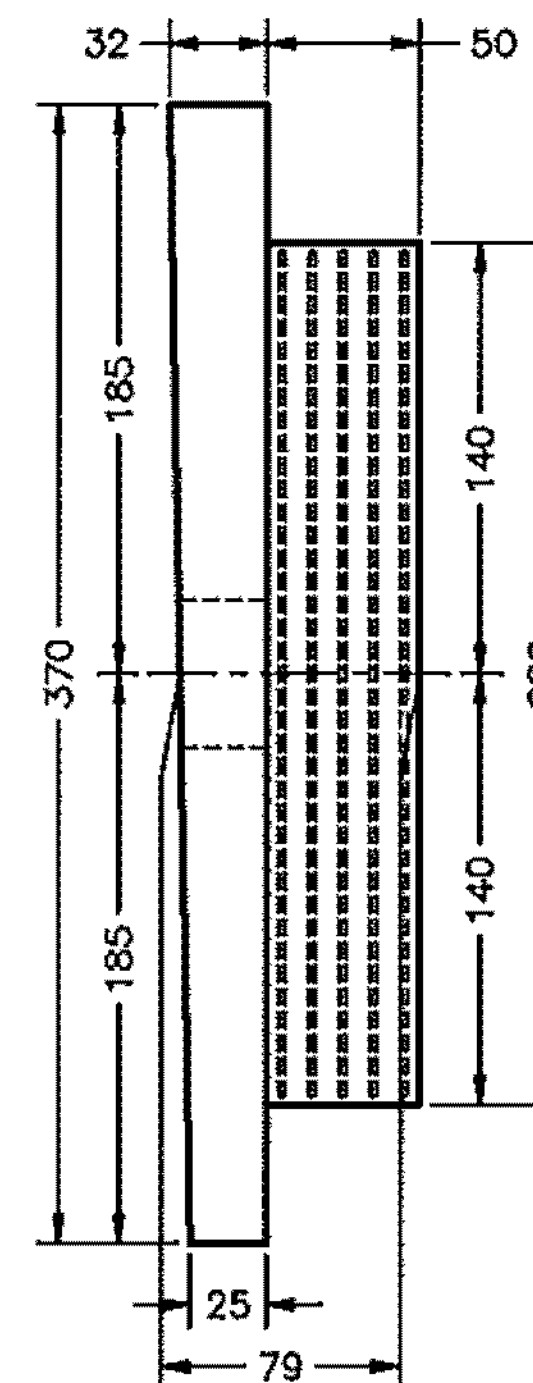
NOTES:

- BEARINGS TO BE MANUFACTURED ACCORDING TO AASHTO LRFD BRIDGE DESIGN SPECIFICATIONS 4th EDITION, SECTION 14, METHOD B.
- THE BEARINGS ARE DESIGNED SO THAT THE SUPERSTRUCTURE MAY BE ERECTED WHEN THE AMBIENT AIR TEMPERATURE IS WITHIN THE RANGE OF 20°F. TO 70°F.
- THE ELASTOMER AASHTO GR. (NATURAL RUBBER), TEMPERATURE GR. 4, SHALL HAVE A DUROMETER HARDNESS SHORE A 60 ± 5 POINTS.
- STEEL SHIM PLATES FOR INTERNAL LAMINATES SHALL BE AASHTO M270M/M270 GRADE 36. SHIMS SHALL BE SMOOTH CUT, DEBURRED, GRIT BLASTED, AND DEGREASED PRIOR TO VULCANIZATION.
- SOLE PLATES SHALL BE AASHTO M270M/M270 GRADE 50.
- ALL STEEL PRODUCED IN THE U.S.A.
- CONTACT PETER SOMOGYI , COORDINATOR.
- TOLERANCES: THICKNESS -0+2mm  
PLAN -0+2mm
- MANUFACTURING FACILITY LOCATION:  
AMSCOT STRUCTURAL PRODUCTS INC.  
241 EAST BLACKWELL STREET  
DOVER, NJ 07801
- ALL DIMENSIONS ARE IN MILLIMETERS
- ALL SOLE PLATES, ANCHOR BOLTS, NUTS AND WASHERS SHALL BE GALVANIZED AS PER STANDARD SPECIFICATIONS 506.15 AND 531.04(b), AS MODIFIED BY THE GENERAL SPECIAL PROVISIONS. PRIOR TO GALVANIZING, ALL CORNERS AND EDGES OF STEEL PLATES, SHAPES, ECT., SHALL BE GROUND TO A 1.6mm RADIUS.

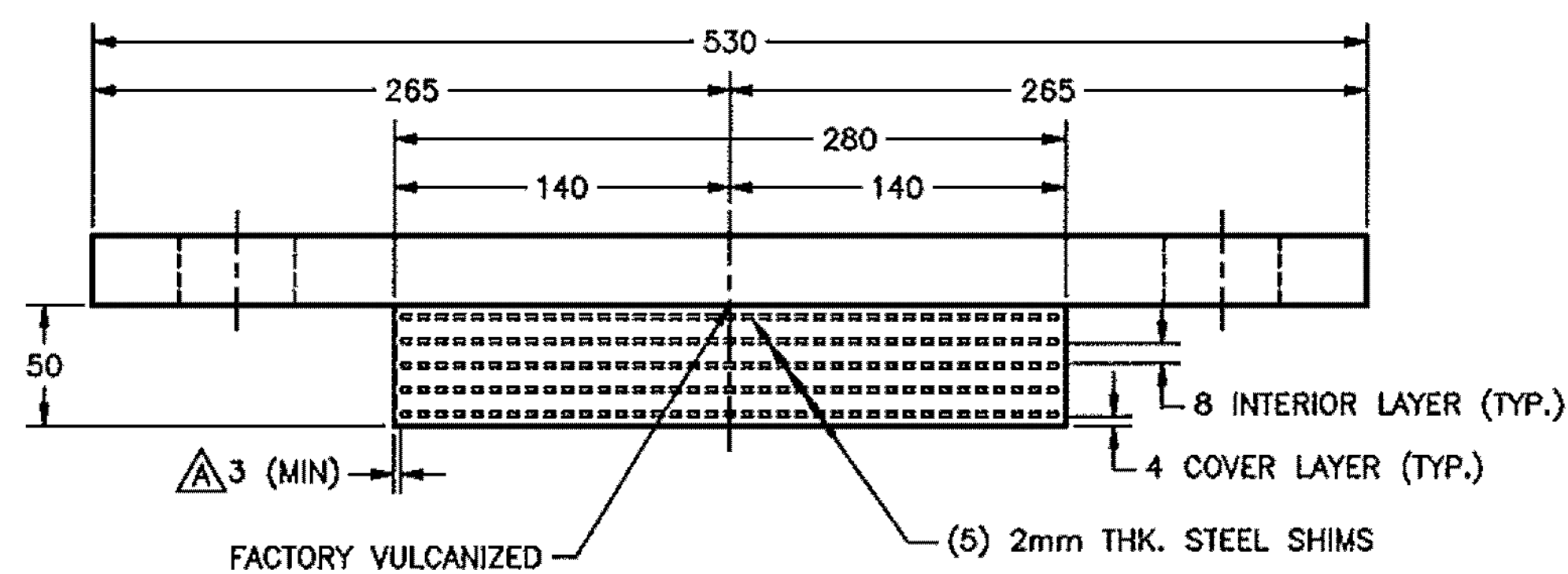


PLAN VIEW

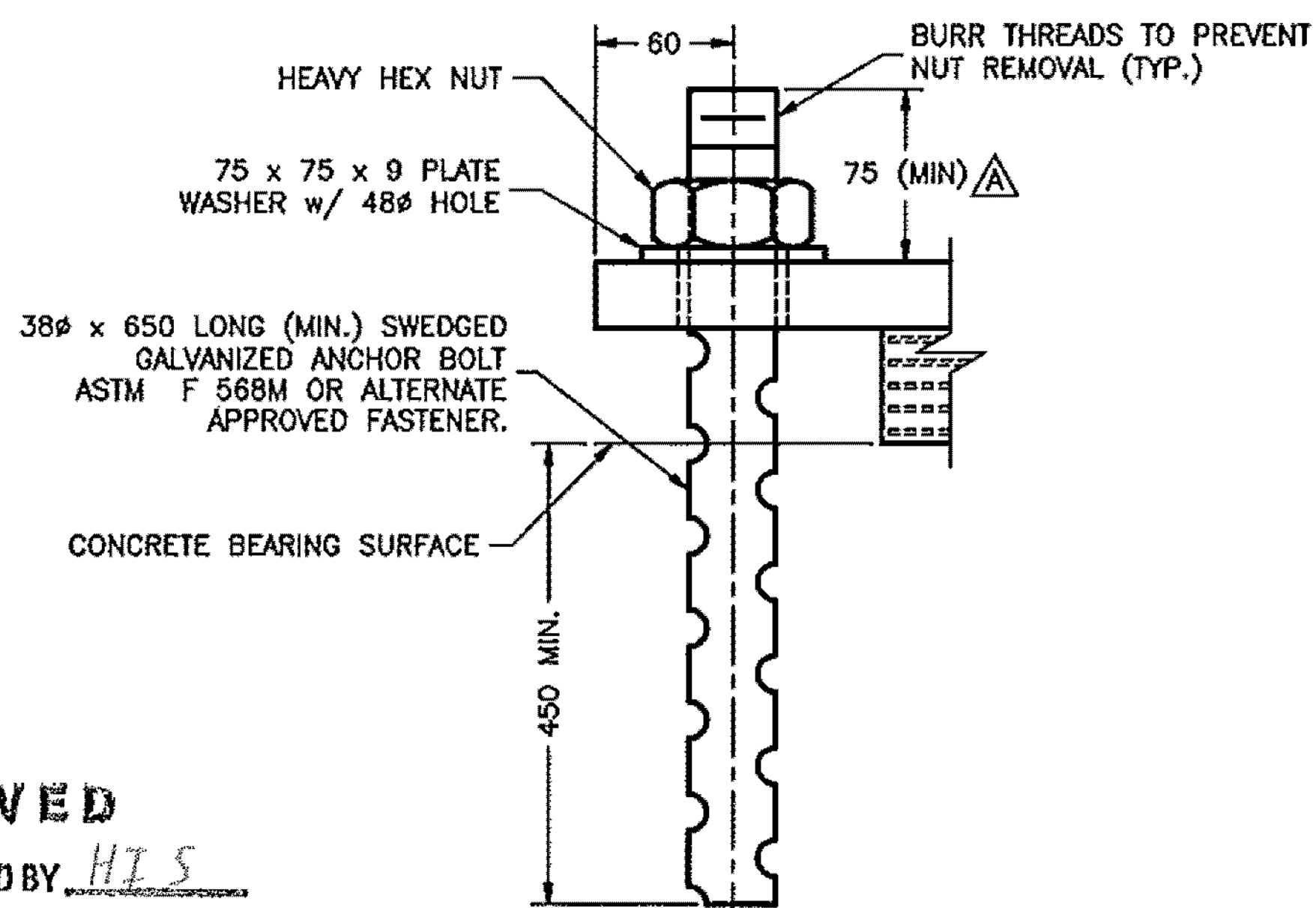
QTY REQ'D = 8 ASSY.  
ABUTMENT 1  
FIXED END



SIDE VIEW



ELEVATION VIEW



ANCHOR BOLT DETAIL

QTY. REQ'D = 16, 2 PER BEARING  
ABUTMENT 1

RECEIVED  
CK'D BY \_\_\_\_\_ OK'D BY H.T.S.

MAR 10 2011  
RESUBMIT \_\_\_\_\_ APPROVED ✓  
BY CPW DATE 3/11/11

VERMONT AGENCY OF TRANSPORTATION  
TOWN OF EAST MONTPELIER  
PROJECT NO. BRF 037-2 (8)

FIXED ELASTOMERIC  
BEARING DETAIL

**AMSCOT**  
STRUCTURAL PRODUCTS CORP.  
DOVER, NJ JOB # 3684

SCALE: N.T.S.	CHECKED: B.F.	DRAWN BY: C.A.M.
DATE: 12/28/10	REVISION: A	

FOR: AL ST. ONGE

DWG NO: ASO10A1RA SHEET NO. 1 OF 2