

EXISTING 3-ROD ROW
END MAINTENANCE AGREEMENT
 ZONE #1 TH 11
 I+080.00 LT 7.54M (24.75')

REMOVAL AND DISPOSAL
 OF GUARDRAIL
 STA I+086.000 LT - I+109.000 LT
 STA I+104.500 RT - I+107.500 RT
 STA I+129.000 RT - I+144.500 RT
 STA I+129.000 LT - I+130.500 LT

BRIDGE RAILING, 3 RAIL ALUMINUM
 STA I+110.070 LT - I+129.850 LT
 STA I+110.070 RT - I+129.520 RT
 HD STEEL BEAM GUARDRAIL, GALVANIZED
 STA I+085.600 LT - I+102.460 LT
 STA I+095.200 RT - I+102.460 RT
 STA I+137.140 RT - I+144.080 RT

CONSTRUCT DRIVE**
 STA I+092.000 RT - W/3000 PAVED APRON
 STA I+135.000 LT - PAVED DRIVE
 STA I+150.000 RT - PAVED DRIVE

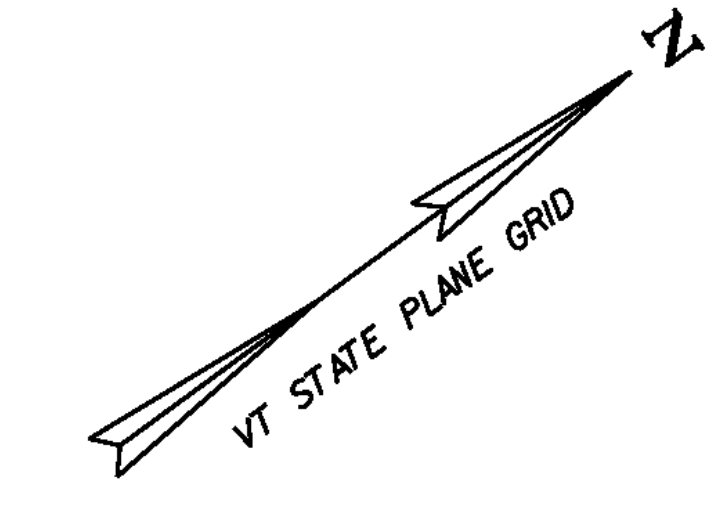
ANCHOR FOR STEEL BEAM RAIL
 STA I+085.000 LT
 STA I+097.000 RT
 STA I+143.000 RT

** PAVEMENT FOR DRIVES SHALL BE ONE
 40MM LIFT OF TYPE 111S PAVEMENT.

ALUMINUM APPROACH RAILING
 STA I+102.460 LT - I+110.070 LT
 STA I+102.460 RT - I+110.070 RT
 STA I+129.520 RT - I+137.140 RT
 STA I+129.850 LT - I+130.780 LT

UNDERGROUND UTILITIES
 * STA I+135.000 - SEWER LINE
 * STA I+160.000 - WATER LINE
 ■ APPROXIMATE LOCATION

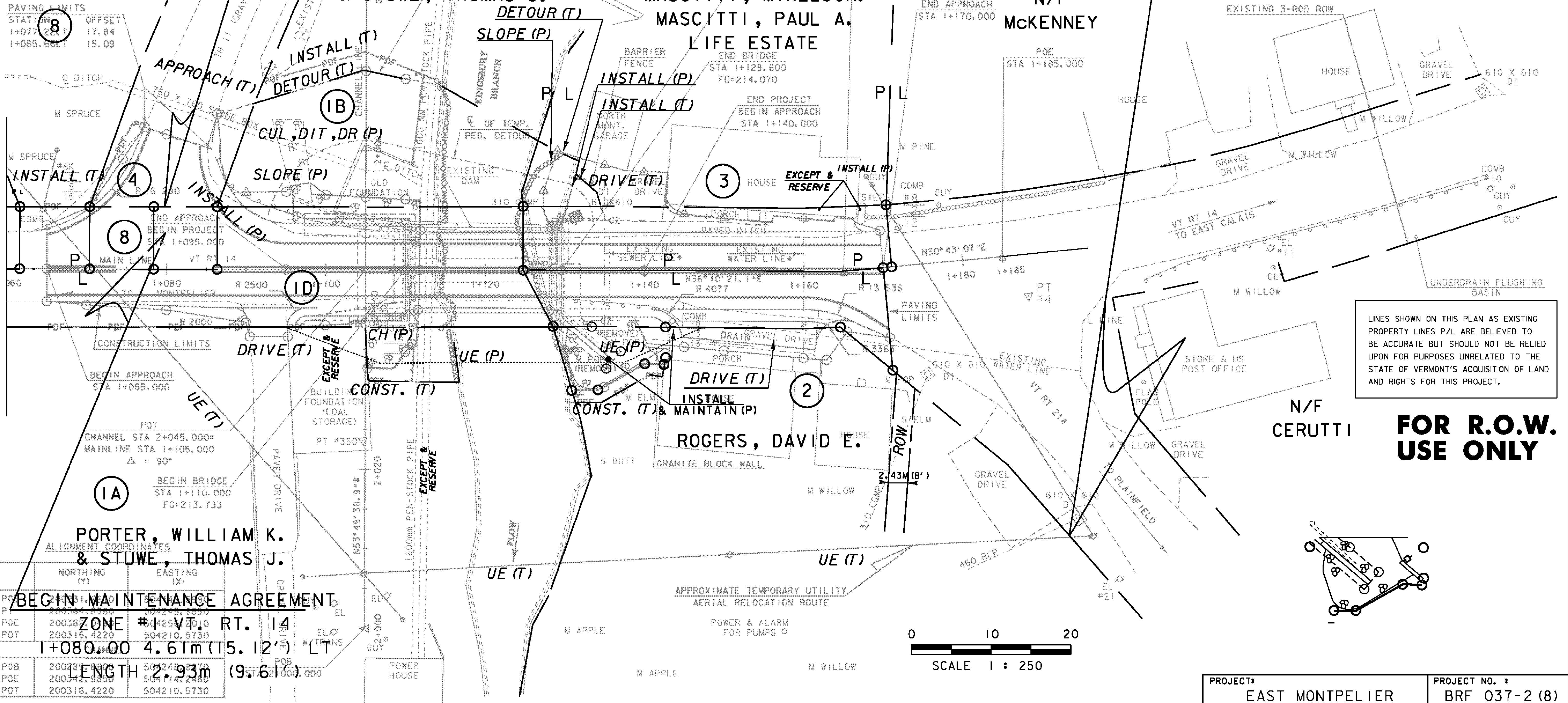
BARRIER FENCE
 (FOR PEDESTRIAN DETOUR)
 STA I+131 - I+135 LT
 (INCIDENTAL TO ITEM 528.12
 TEMPORARY PEDESTRIAN BRIDGE)



END R.O.W. PROJECT
BRF 037-2(8)
STA. 1+189.93 36.16m
(118.63')RT.

PAVING LIMITS

STATION	OFFSET
I+077.22 LT	17.84
I+085.60 LT	15.09

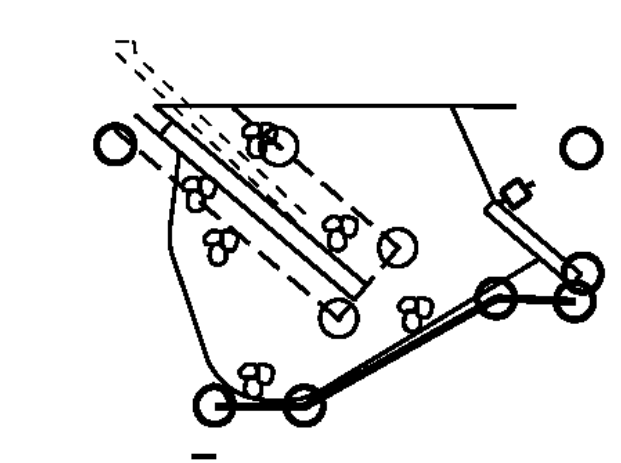
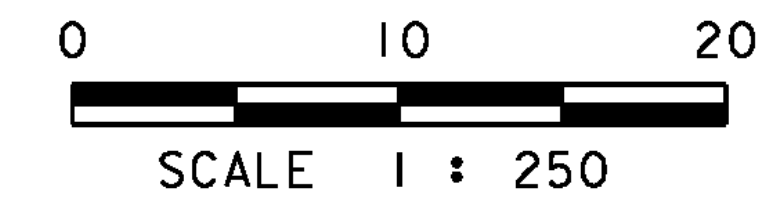


LINES SHOWN ON THIS PLAN AS EXISTING
 PROPERTY LINES P/L ARE BELIEVED TO
 BE ACCURATE BUT SHOULD NOT BE RELIED
 UPON FOR PURPOSES UNRELATED TO THE
 STATE OF VERMONT'S ACQUISITION OF LAND
 AND RIGHTS FOR THIS PROJECT.

**FOR R.O.W.
 USE ONLY**

BEGIN MAINTENANCE AGREEMENT
 ZONE #1 VT RT. 14
 I+080.00 4.61m (15.12') LT
 LENGTH 2.93m (9.61')

	NORTHING (Y)	EASTING (X)
POB	200381.6300	504251.2010
POE	200381.6300	504251.2010
POT	200316.4220	504210.5730
POT	200316.4220	504210.5730



DATUM

VERTICAL	USGS
HORIZONTAL	ASSUMED

EXISTING BRIDGE DATA
 YEAR BUILT = 1936
 SINGLE SPAN ROLLED BEAM
 OVERALL LENGTH = 18.90m (62')
 CLEAR SPAN = 17.98m (59')
 ROADWAY WIDTH = 7.32m (24')

PROJECT: EAST MONTPELIER	PROJECT NO. : BRF 037-2 (8)
DESIGN FILE NAME: re054zzz.dgn	PLOT DATE: 18-AUG-2010
IPARM FILE NAME: se054row2	SURVEY DATE: 3/93
SURVEYED BY: R. MOREAU	DRAWN BY: L.J. STONE
SQUAD LEADER: C.P. WILLIAMS	SHEET: 41 OF 63
ROW SHEET 14 OF 14	