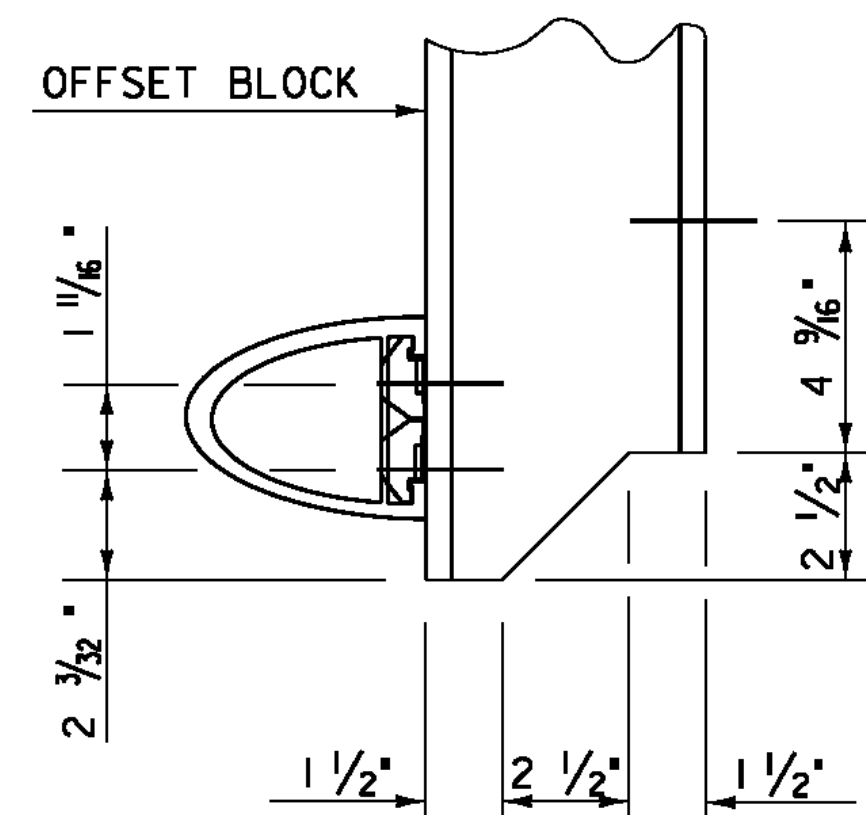
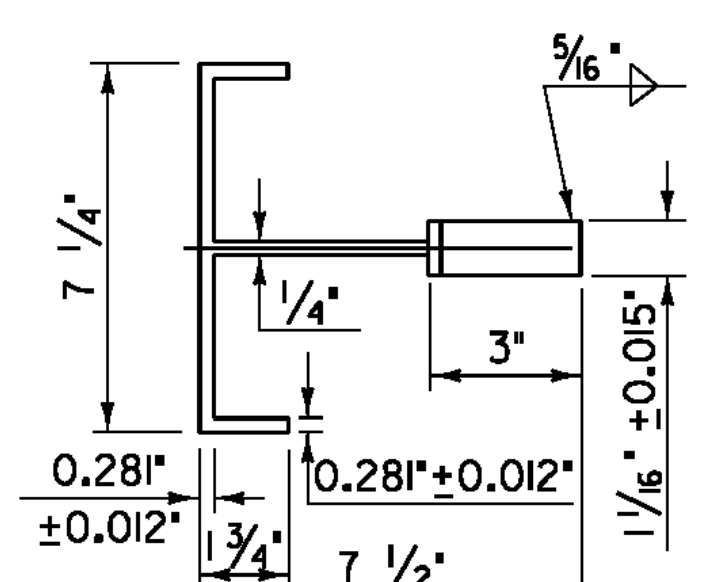


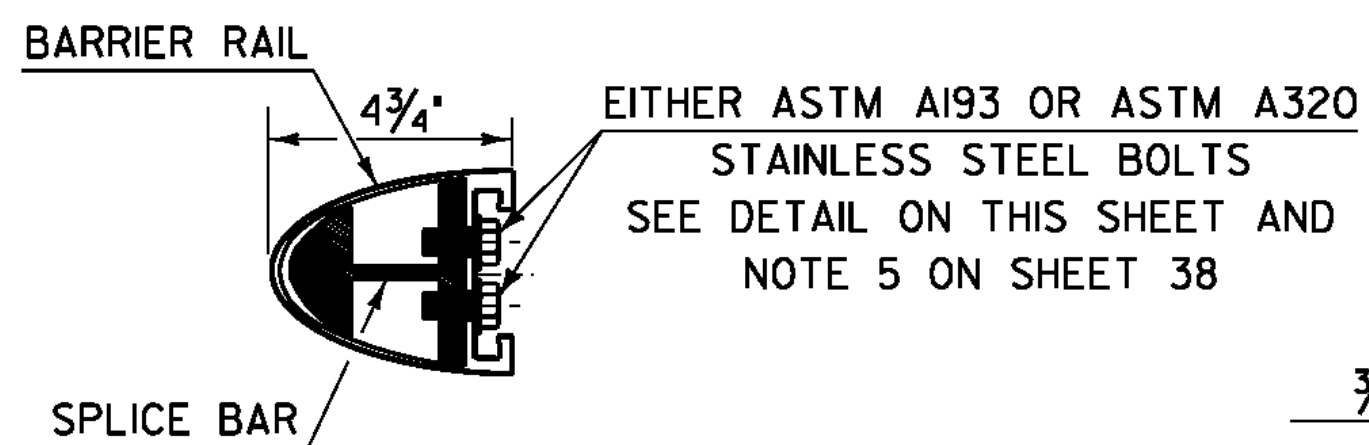
**POST SIDE VIEW**



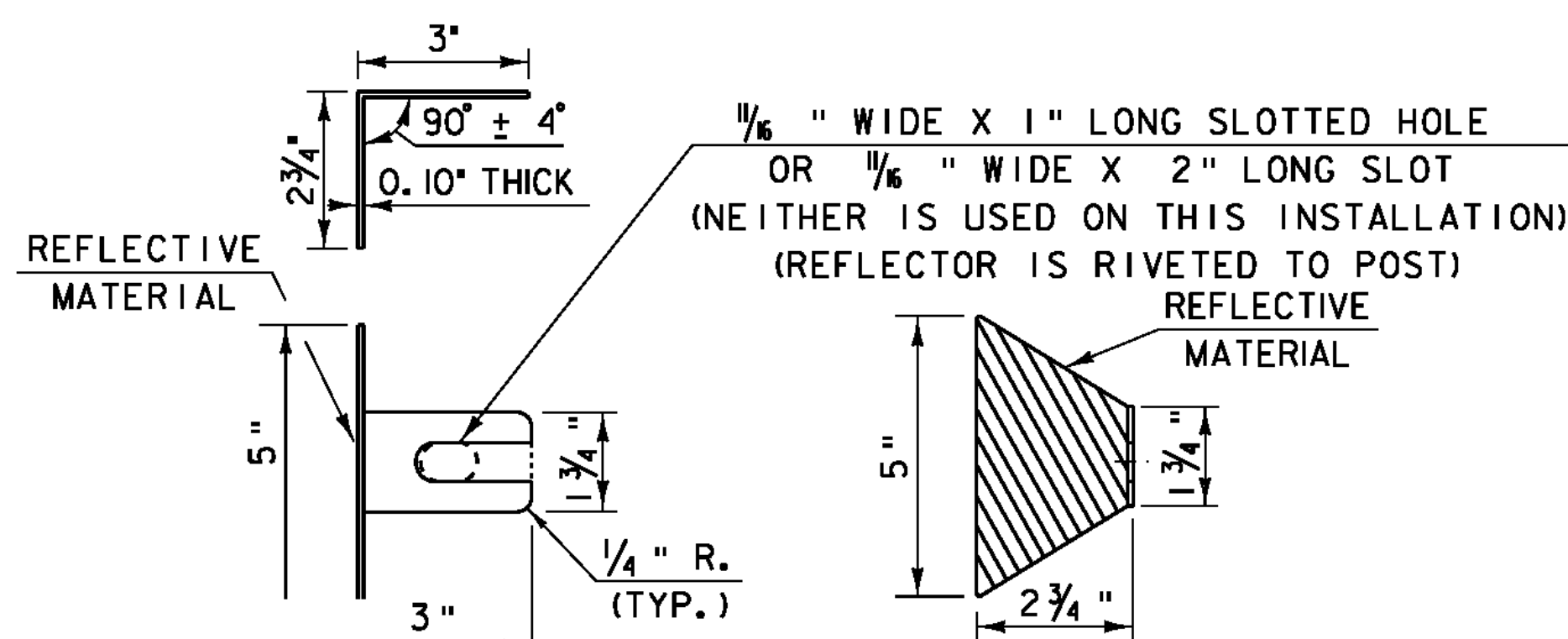
**COPING DETAIL**



**POST PLAN VIEW**



**TYPICAL SECTION THROUGH BARRIER RAIL SPLICE**



**REFLECTOR DETAILS**

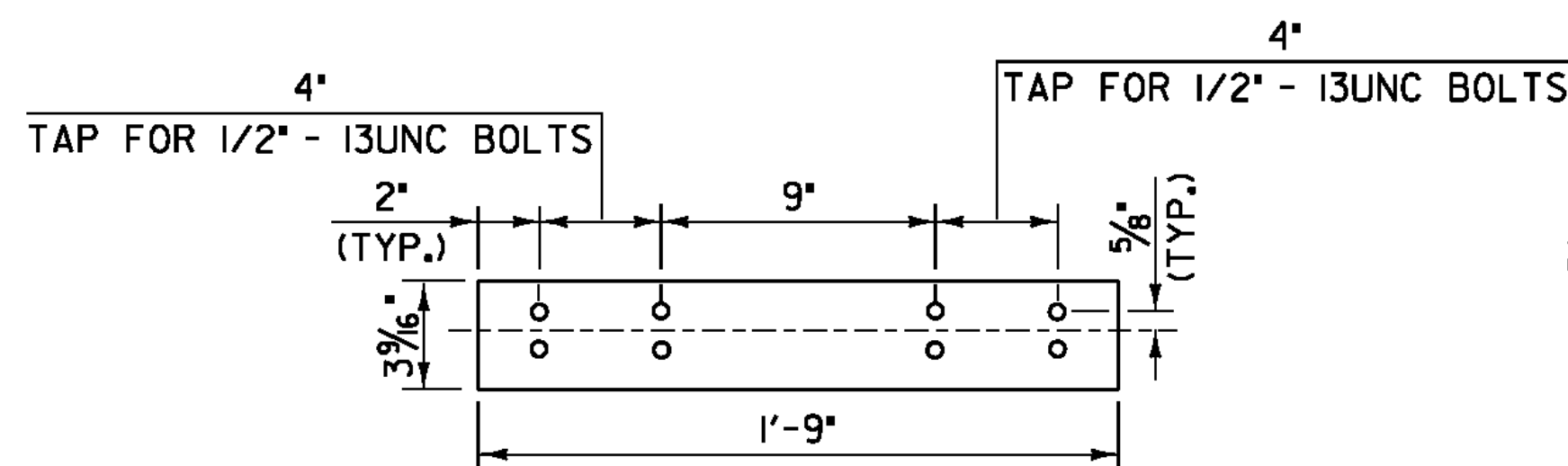
THIS REFLECTORIZED ALUMINUM DELINEATOR IS TO BE ERECTED EVERY 30 FEET (OR CLOSEST POST) WITH 2 NO. 8 X 3/4" SELF-TAPPING SCREWS.

DELINEATORS SHALL MEET SPECIFICATION REQUIREMENTS FOR ASTM B209 ALLOY 5052-H32.

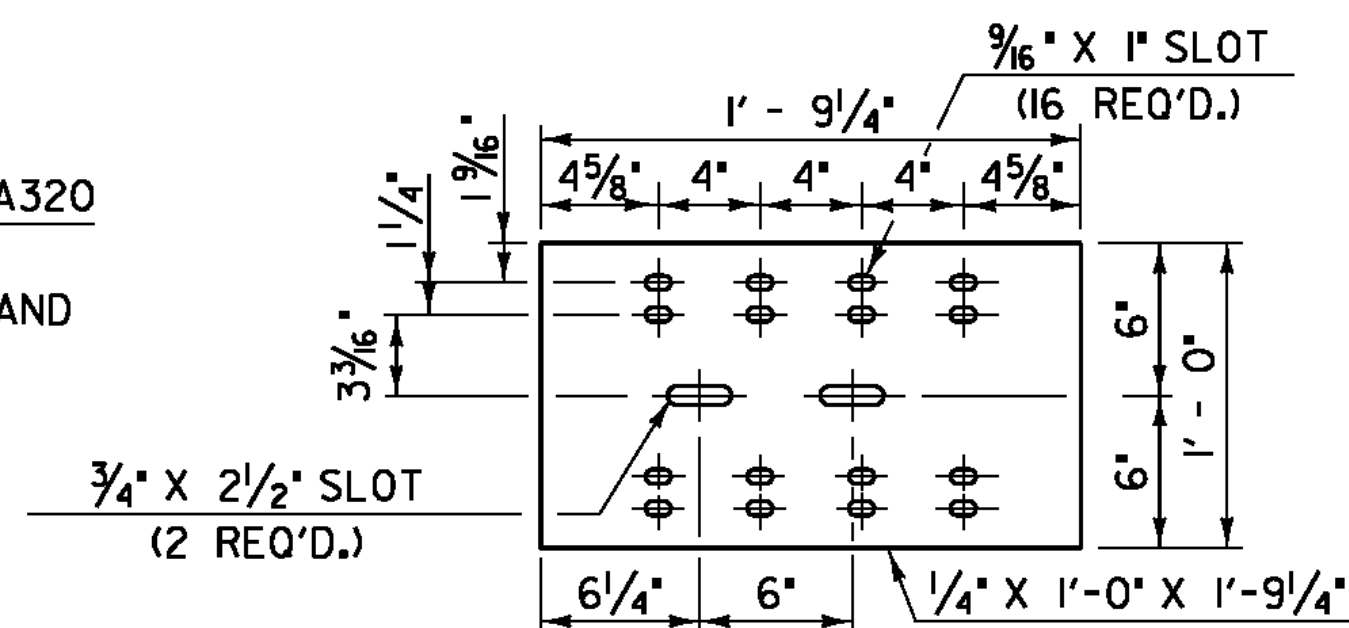
REFLECTIVE MATERIAL SHALL MEET THE REQUIREMENTS OF SUBSECTION 750.08 AND SHALL BE OF ENCAPSULATED LENS SILVER OR AMBER. AMBER IS TO BE INSTALLED ON THE DRIVER'S LEFT AND SILVER ON THEIR RIGHT.

ON BRIDGES WITH A SIDEWALK, DELINEATORS ARE NOT TO BE INSTALLED ON THE SIDEWALK SIDE OF THE BRIDGE (I.E. DELINEATORS INSTALLED ONLY ON THE CURB SIDE AND ON THE APPROACH RAIL ON THE CURB SIDE.)

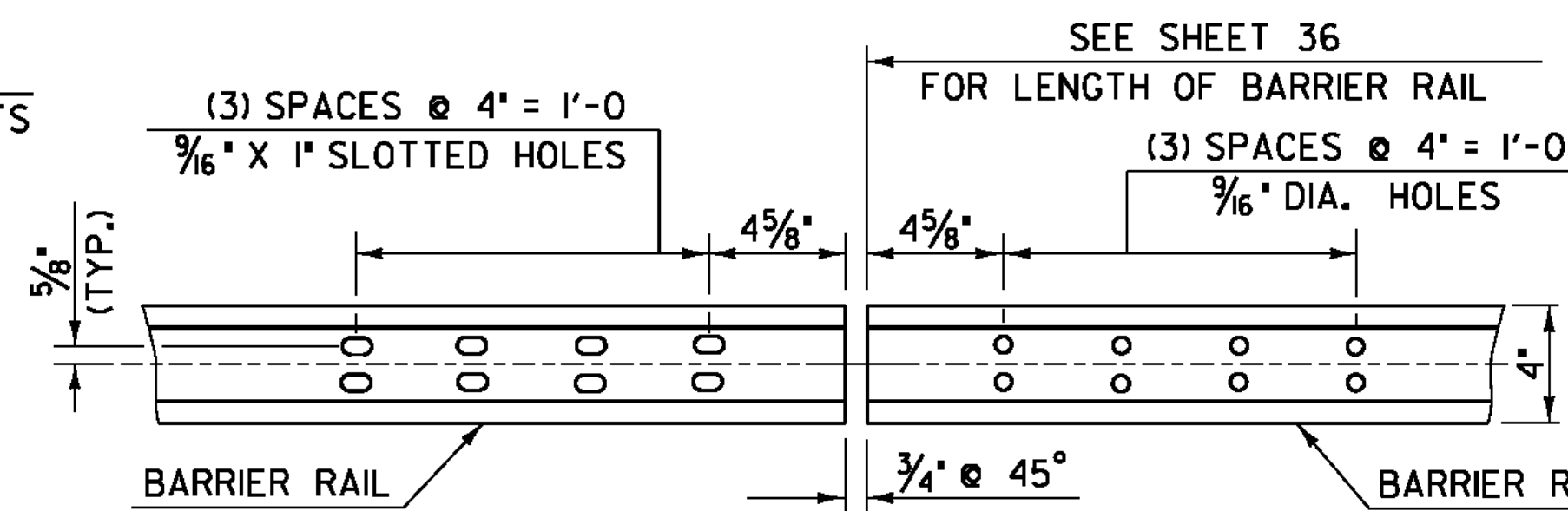
PAYMENT SHALL BE SUBSIDIARY TO ALL OTHER ITEMS.



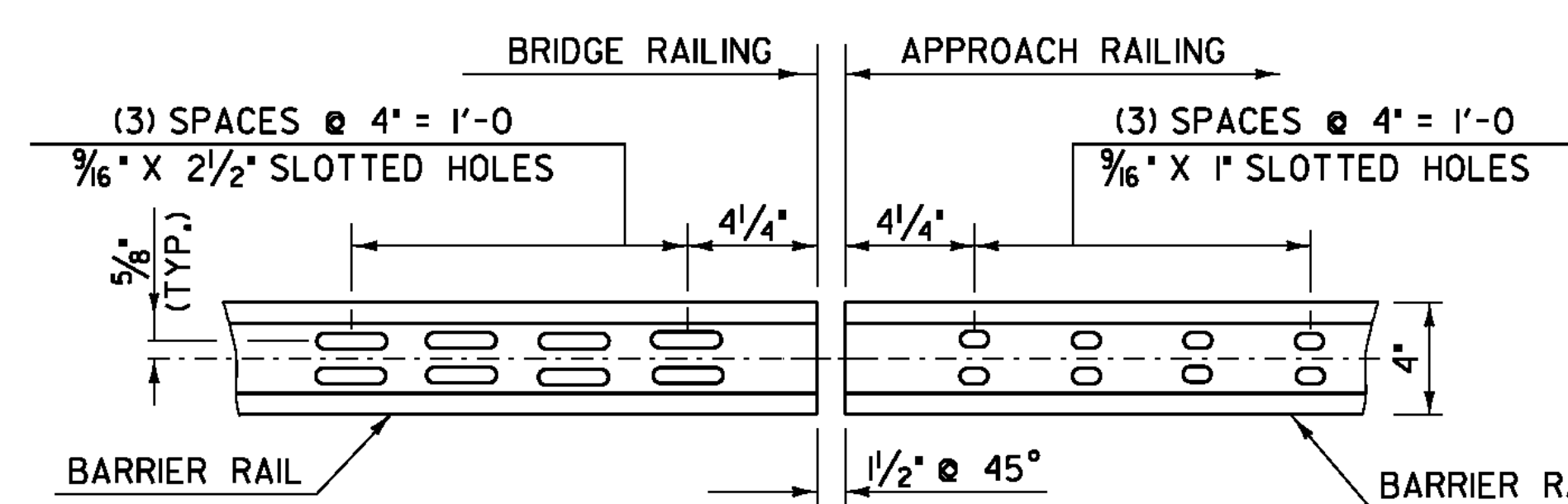
**ELEVATION OF BARRIER RAIL SPLICE BAR TO BE USED AT TRANSITION BETWEEN APPROACH RAIL & GUARD RAIL (FROM BACK)**



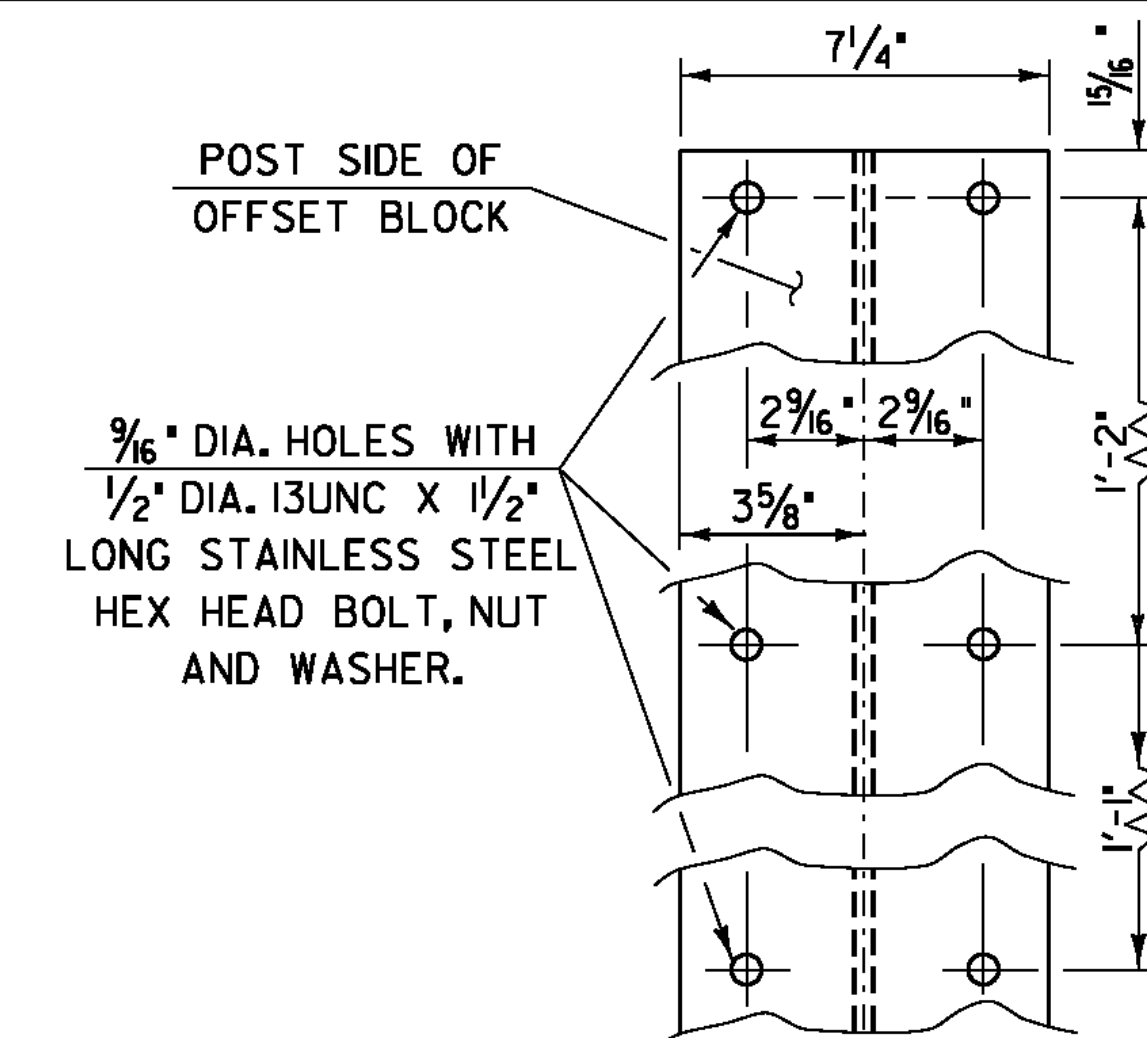
**BACK-UP PLATE DETAILS**



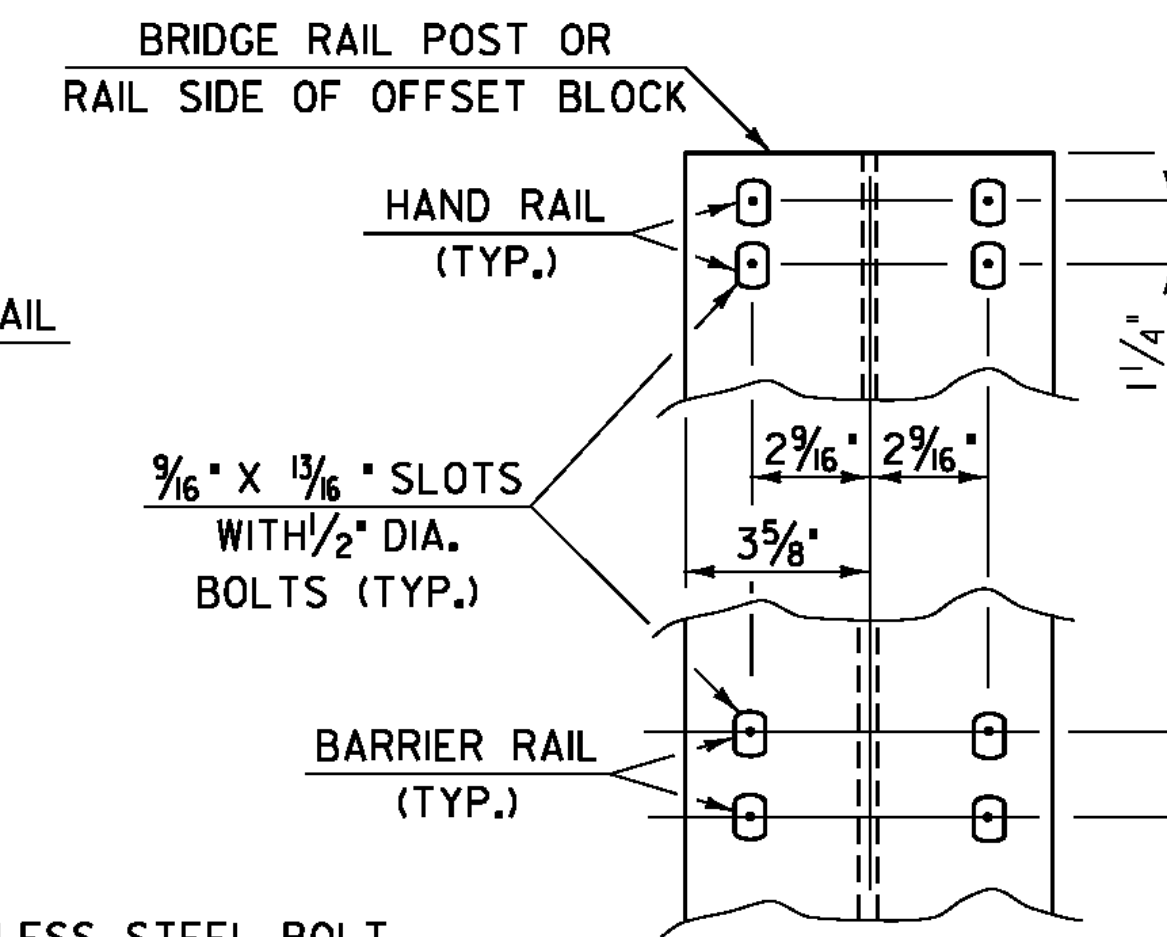
**ELEVATION OF BARRIER RAIL (FROM BACK) AT ALL INTERMEDIATE RAIL SPLICES**



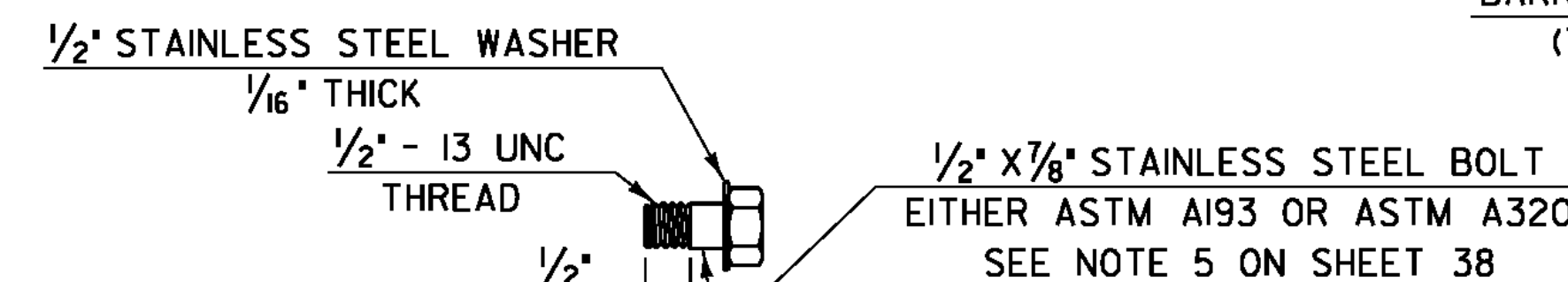
**ELEVATION OF BARRIER RAIL (FROM BACK)**



**OFFSET BLOCK CONNECTION**

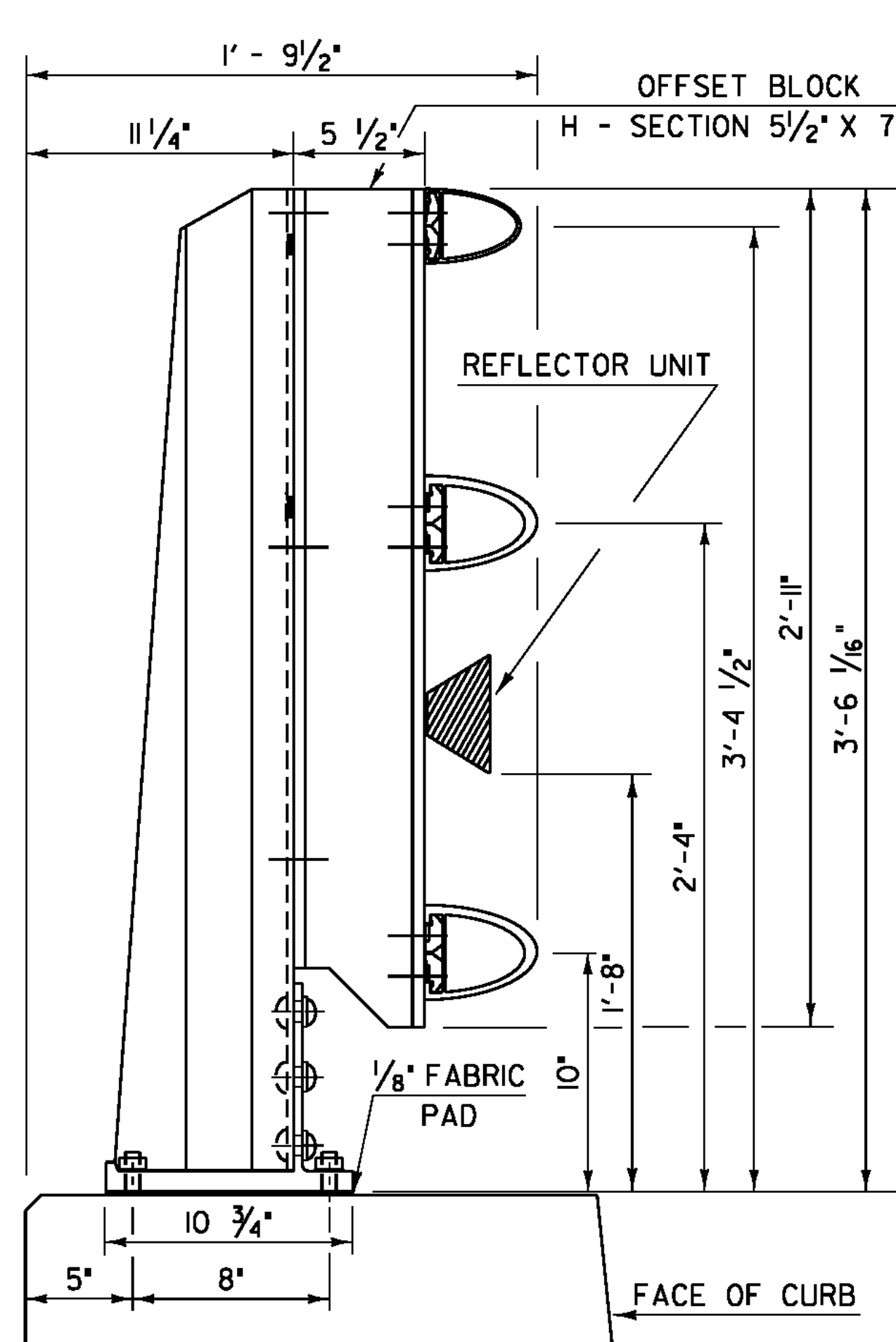


**RAIL CONNECTION**

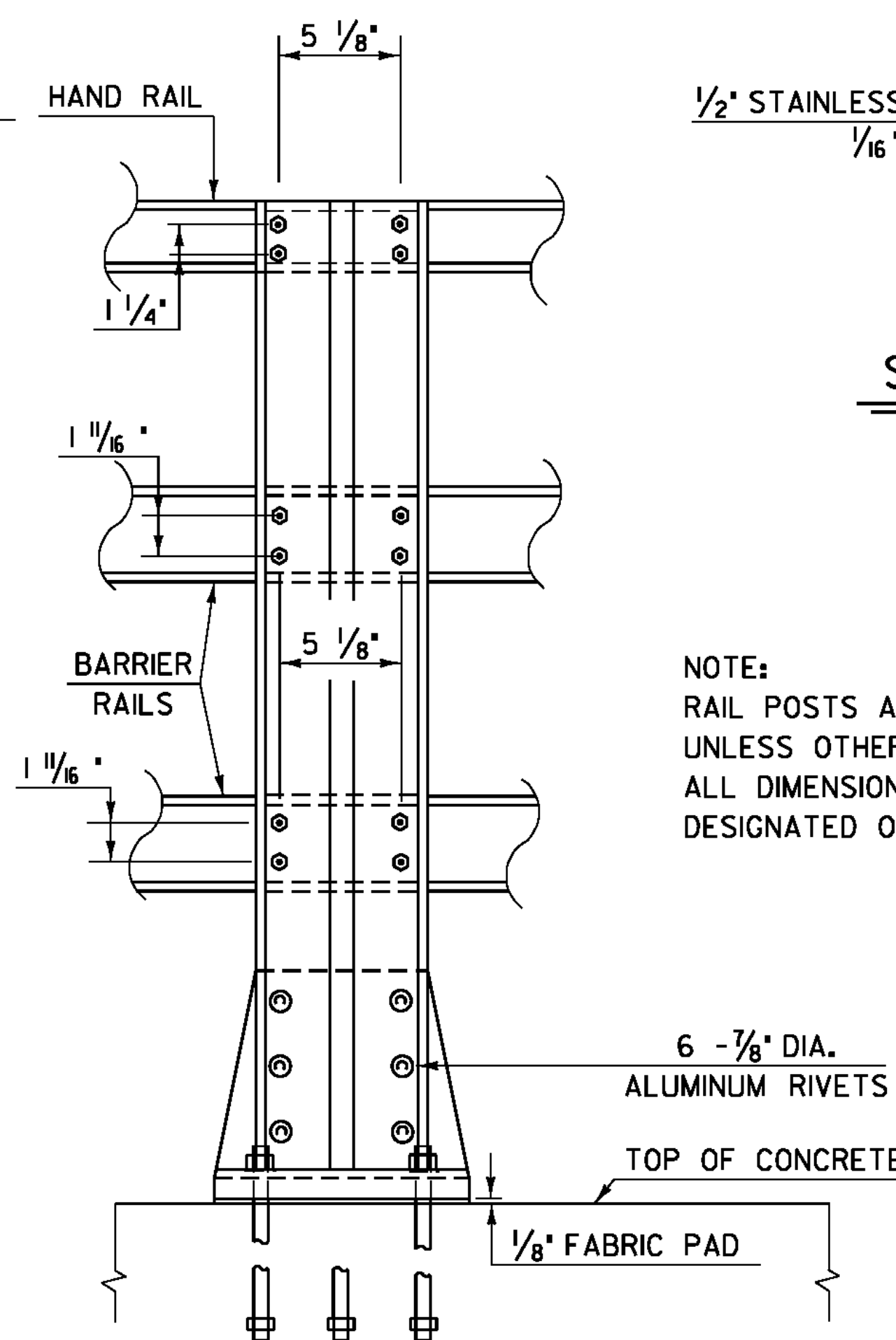


**STAINLESS STEEL BOLT DETAILS**

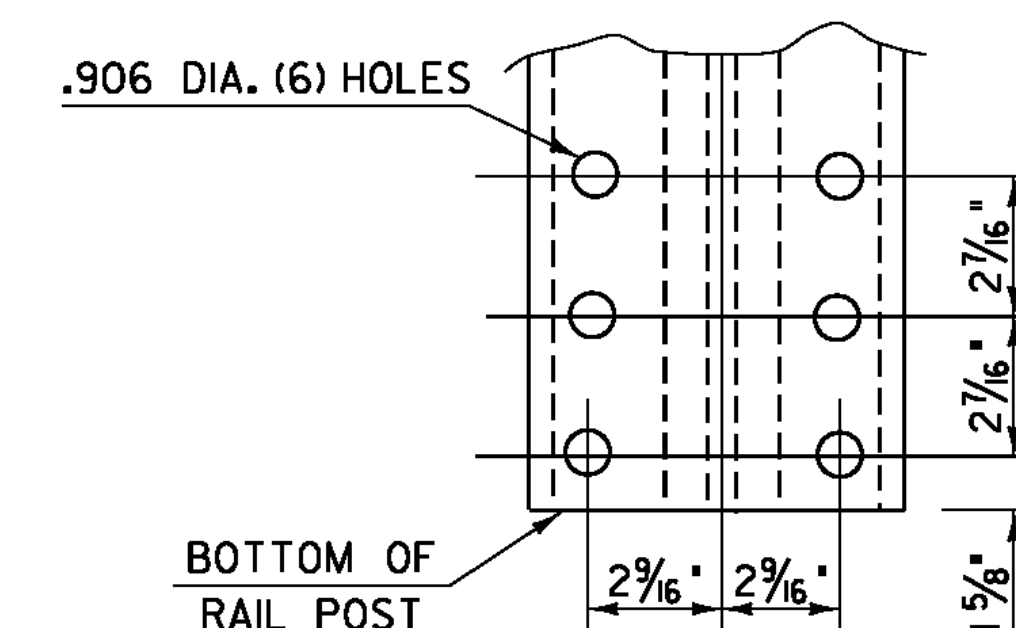
NOTE:  
RAIL POSTS ARE TO BE SET NORMAL TO GRADE UNLESS OTHERWISE DESIGNATED ON BRIDGE PLANS. ALL DIMENSIONS ARE TYPICAL UNLESS OTHERWISE DESIGNATED ON THE BRIDGE PLANS.



**RAIL POST DETAILS ON SUPERSTRUCTURE SIDE ELEVATION OF THREE RAIL TO BE USED ON CURB SIDE**



**OUTSIDE ELEVATION OF THREE RAIL POST**



**POST BASE BOLT HOLE DETAILS**

ALLOWABLE STRESSES:  
RAILING : 21,000 PSI TENSION  
22,000 PSI COMPRESSION  
POSTS : 17,000 PSI TENSION  
19,000 PSI COMPRESSION

NOTE: DETAILS IN ENGLISH UNITS

PROJECT: EAST MONTPELIER	PROJECT NO. # BRF 037 - 2 (8)
DESIGN FILE NAME: 86e054\Structures\se054rail.dgn	PLOT DATE: 18-AUG-2010
IPARM FILE NAME: raildet2.i	DRAWN BY: D.D. BEARD
DESIGNED BY: L.J. STONE	CHECKED BY: H. I. SALLS
SQUAD LEADER: C.P. WILLIAMS	ALUMINUM RAILING DETAILS 2
	SHEET: 37 OF 63