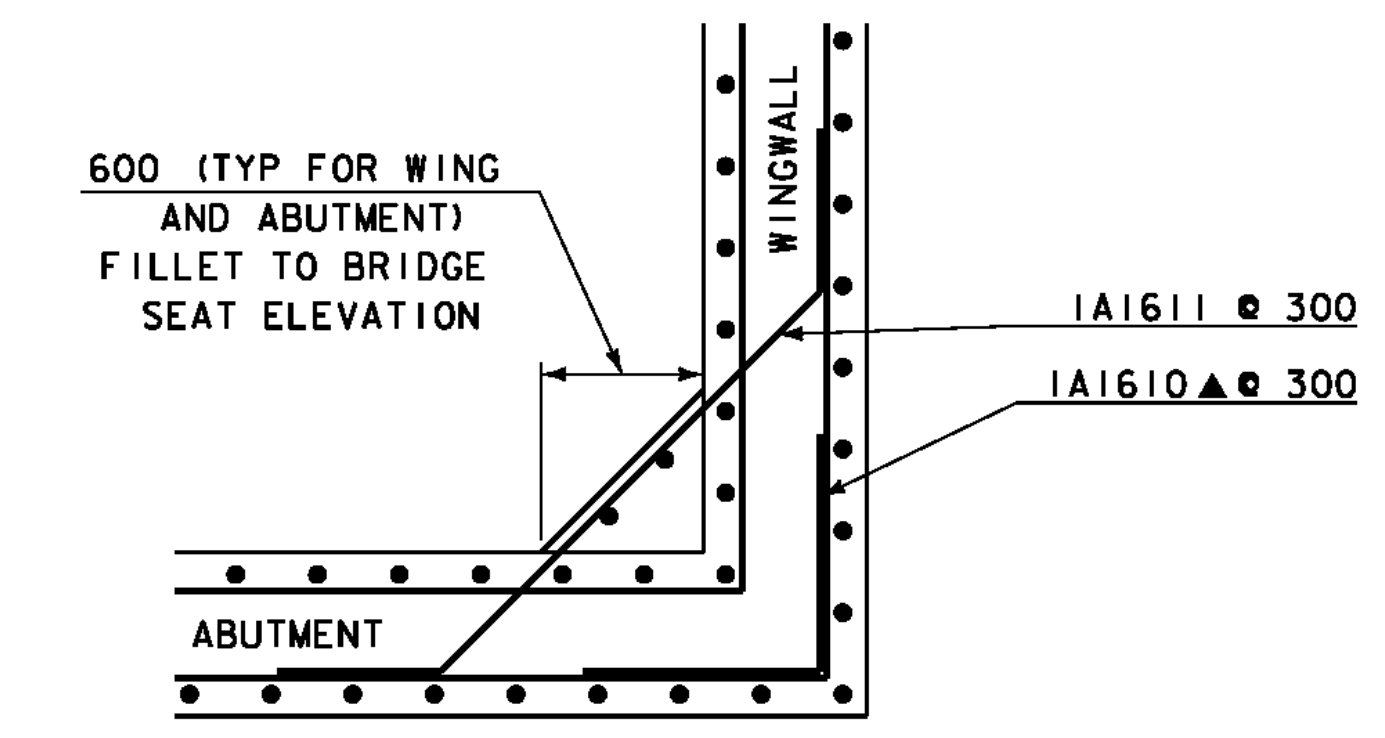


**WINGWALL CORNER DETAIL ABOVE BRIDGE SEAT (TYP)**

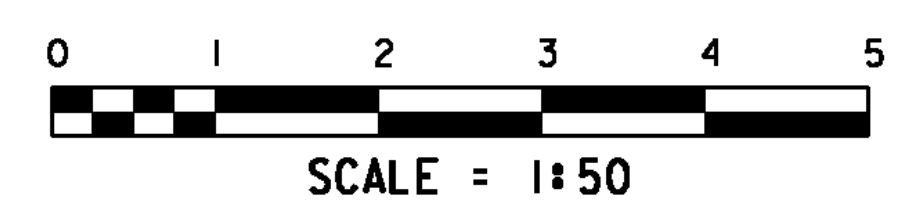


**WINGWALL CORNER DETAIL BELOW BRIDGE SEAT (TYP)**

**NOTE:**  
 NF = NEAR FACE  
 FF = FAR FACE  
 EF = EACH FACE  
 ▲ = CUT TO FIT IN FIELD

80 CLR. UNLESS OTHERWISE SPECIFIED ON THE PLANS.

ALL LAPS ARE 660 MIN UNLESS OTHERWISE SPECIFIED ON THE PLANS.



PROJECT: EAST MONTPELIER	PROJECT NO. # BRF 037-2 (8)
DESIGN FILE NAME: 86e054/Structures/se054sub.dgn	PLOT DATE: 18-AUG-2010
IPARM FILE NAME: se054ftgl.i	DRAWN BY: D.D. BEARD
DESIGNED BY: L.J. STONE	CHECKED BY: H.I. SALLS
SQUAD LEADER: C.P. WILLIAMS	ABUTMENT 1 FOOTING REINFORCEMENT SHEET: 29 OF 63