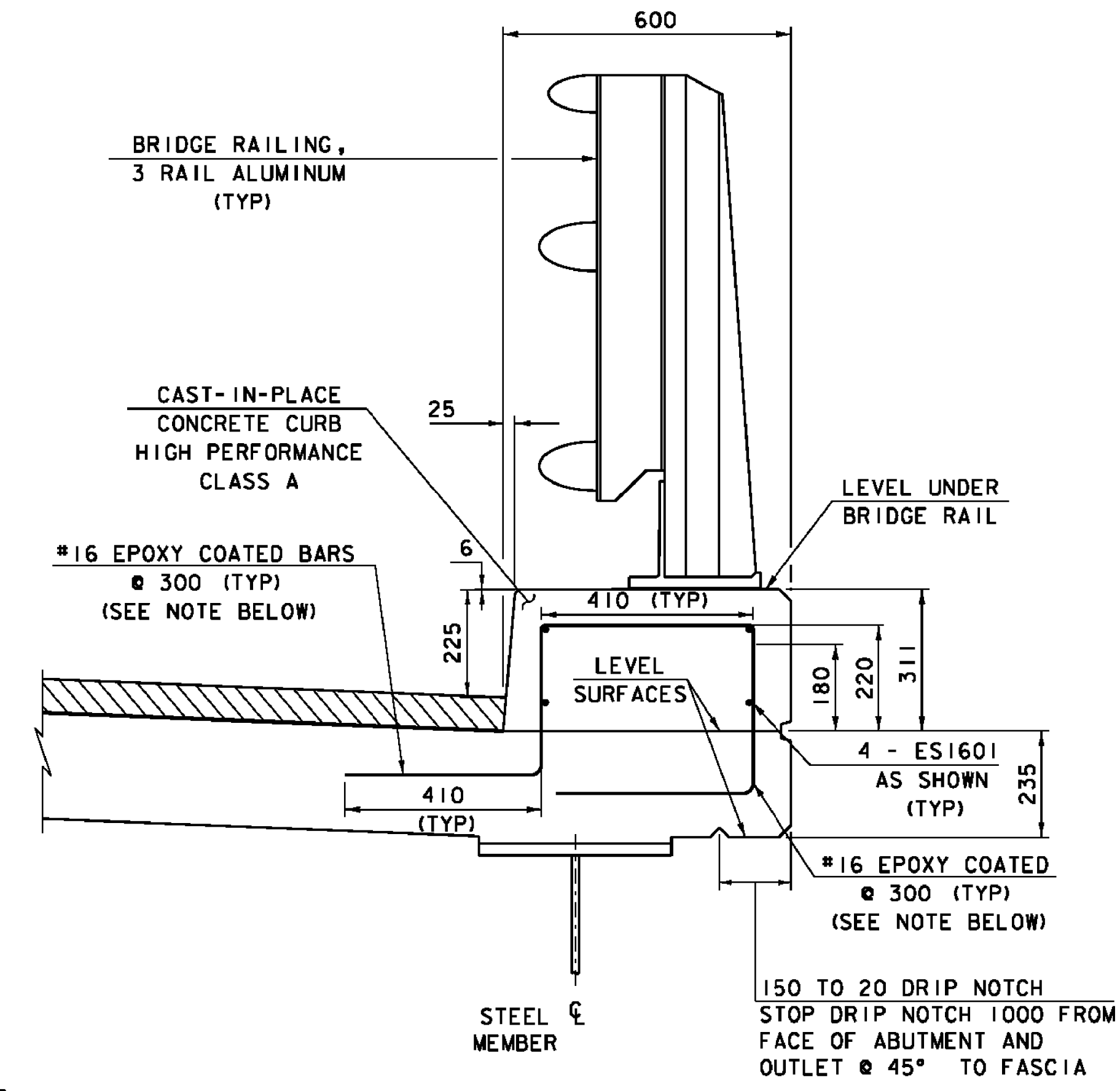
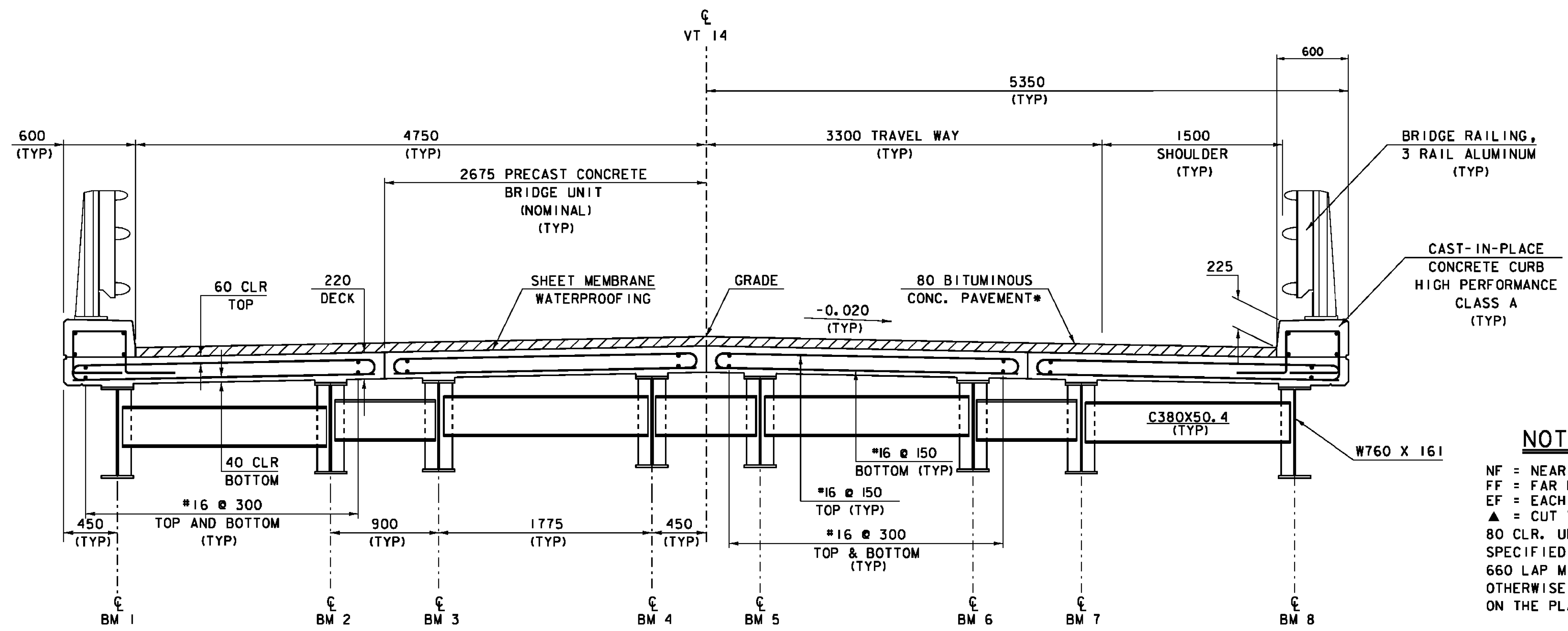


- NOTE**
1. THE SLABS SHALL BE PLACED AT THE NOMINAL SPACING SHOWN ON THE PLANS WITH A 1/4" WIDE GAP BETWEEN THE SLABS. THE WIDTH OF THE GAP CAN VARY DUE TO TOLERANCES OF THE SLABS.
 2. GROUT FOR THE SHEAR KEYS SHALL BE RODDED OR VIBRATED TO ENSURE THAT ALL VOIDS IN THE SHEAR KEYS ARE FILLED.

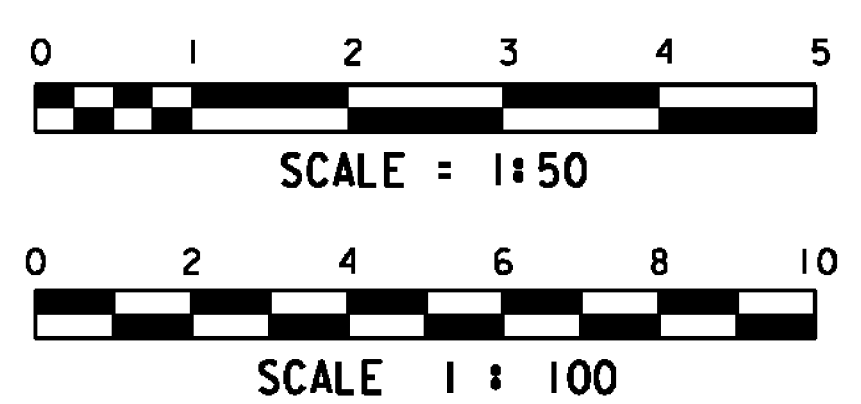
SEE REVISED SHEET 22A



- NOTE:**
- NF = NEAR FACE
FF = FAR FACE
EF = EACH FACE
▲ = CUT TO FIT IN FIELD
- 80 CLR. UNLESS OTHERWISE SPECIFIED ON THE PLANS
660 LAP MIN. UNLESS OTHERWISE SPECIFIED ON THE PLANS

- NOTE**
1. THE #16 EPOXY COATED CURB BARS SHALL BE SUPPLIED BY THE MANUFACTURER OF THE PRECAST BRIDGE UNITS AND SHALL BE INCLUDED IN THE UNIT BID PRICE FOR ITEM 900.675 "SPECIAL PROVISION (PRECAST CONCRETE/STEEL COMPOSITE SUPERSTRUCTURE)".

* 40 mm Type IIIS or IVS over 40 mm Type IIIS or IVS



PROJECT: EAST MONTPELIER	PROJECT NO. # BRF 037-2 (8)
DESIGN FILE NAME: 86e054\structures\se054sup	PLOT DATE: 18-AUG-2010
IPARM FILE NAME: se054deck.i	DRAWN BY: D.D. BEARD
DESIGNED BY: L.J. STONE	CHECKED BY: H.I. SALLS
SQUAD LEADER: C.P. WILLIAMS	SHEET: 22 OF 63
DECK STRUCTURAL DETAILS	