

**REMOVAL AND DISPOSAL OF GUARDRAIL**  
 STA 1+086.000 LT - 1+109.000 LT  
 STA 1+104.500 RT - 1+107.500 RT  
 STA 1+129.000 RT - 1+144.500 RT  
 STA 1+129.000 LT - 1+130.500 LT

**CONSTRUCT DRIVE\*\***  
 STA 1+092.000 RT - W/3000 PAVED APRON  
 STA 1+135.000 LT - PAVED DRIVE  
 STA 1+150.000 RT - PAVED DRIVE

**BRIDGE RAILING, 3 RAIL ALUMINUM W/ SPINDLES**  
 STA 1+110.070 LT - 1+129.850 LT  
 STA 1+110.070 RT - 1+129.520 RT

**HD STEEL BEAM GUARDRAIL, GALVANIZED**  
 STA 1+085.600 LT - 1+102.460 LT  
 STA 1+095.200 RT - 1+102.460 RT  
 STA 1+137.140 RT - 1+144.080 RT

**ANCHOR FOR STEEL BEAM RAIL**  
 STA 1+085.000 LT  
 STA 1+097.000 RT  
 STA 1+143.000 RT

**PORTLAND CEMENT CONCRETE SIDEWALK, 5"**  
 STA 1+104.000 RT - 1+110.000 RT  
 STA 1+129.600 RT - 1+135.600 RT

\*\* PAVEMENT FOR DRIVES SHALL BE ONE 40MM LIFT OF TYPE IIIS PAVEMENT.

**UNDERGROUND UTILITIES**  
 \* STA 1+135.000 - SEWER LINE  
 \* STA 1+160.000 - WATER LINE  
 \* APPROXIMATE LOCATION

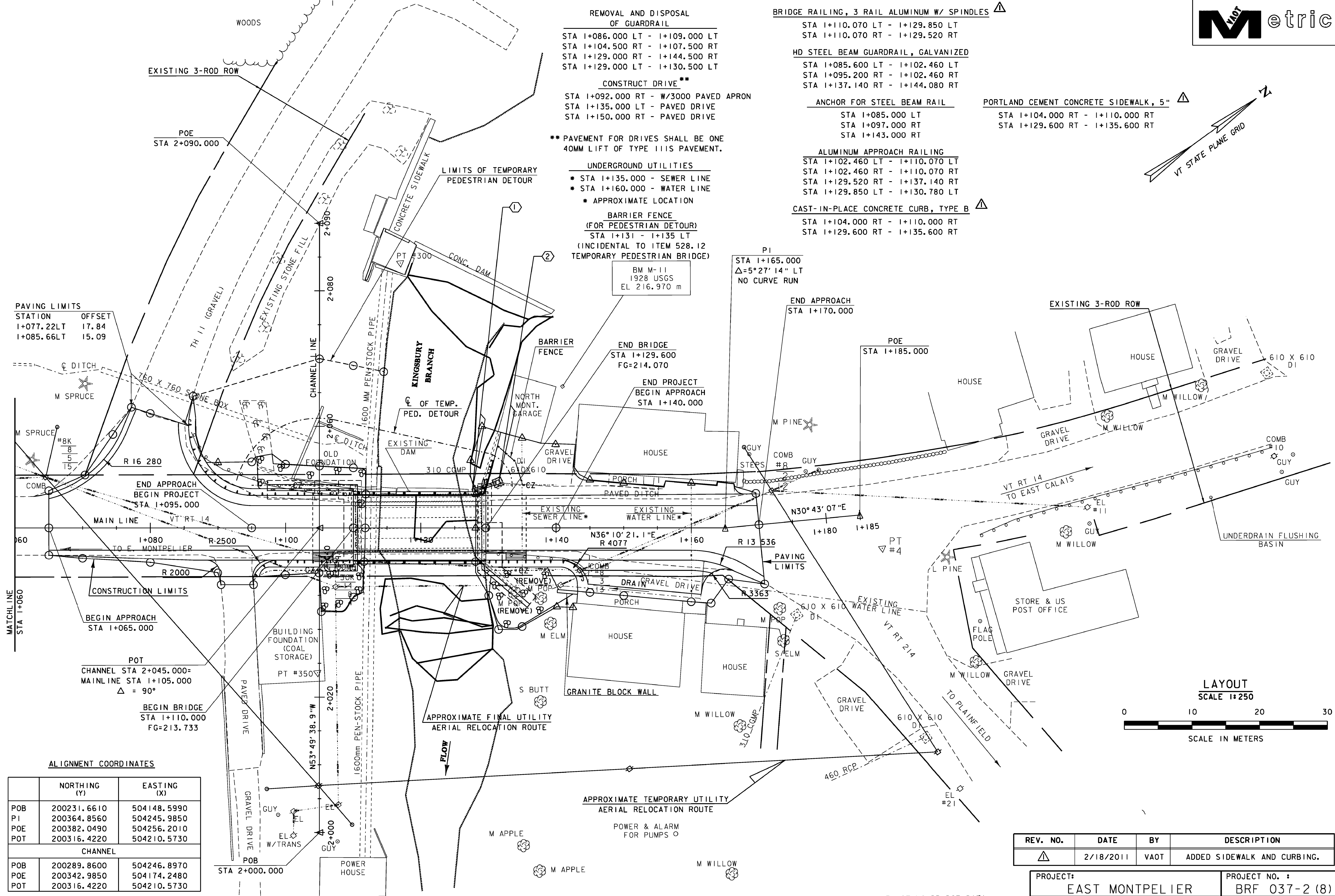
**BARRIER FENCE (FOR PEDESTRIAN DETOUR)**  
 STA 1+131 - 1+135 LT  
 (INCIDENTAL TO ITEM 528.12 TEMPORARY PEDESTRIAN BRIDGE)

**ALUMINUM APPROACH RAILING**  
 STA 1+102.460 LT - 1+110.070 LT  
 STA 1+102.460 RT - 1+110.070 RT  
 STA 1+129.520 RT - 1+137.140 RT  
 STA 1+129.850 LT - 1+130.780 LT

**CAST-IN-PLACE CONCRETE CURB, TYPE B**  
 STA 1+104.000 RT - 1+110.000 RT  
 STA 1+129.600 RT - 1+135.600 RT

**PAVING LIMITS**

STATION	OFFSET
1+077.22LT	17.84
1+085.66LT	15.09



**POT**  
 CHANNEL STA 2+045.000 = MAINLINE STA 1+105.000  
 $\Delta = 90^\circ$

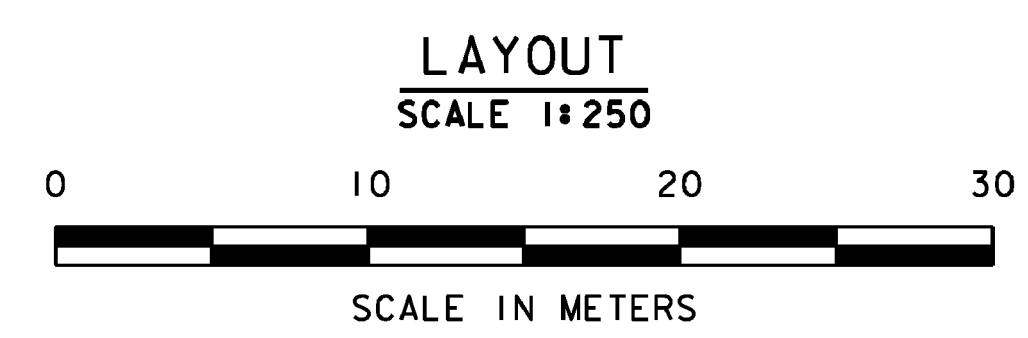
**BEGIN BRIDGE**  
 STA 1+110.000  
 FG=213.733

**ALIGNMENT COORDINATES**

	NORTHING (Y)	EASTING (X)
POB	200231.6610	504148.5990
PI	200364.8560	504245.9850
POE	200382.0490	504256.2010
POT	200316.4220	504210.5730
CHANNEL		
POB	200289.8600	504246.8970
POE	200342.9850	504174.2480
POT	200316.4220	504210.5730

**DATUM**

VERTICAL	USGS
HORIZONTAL	ASSUMED



① - ② SEE PIPE SECTIONS AND DRAINAGE DETAIL SHEET

APPROXIMATE TEMPORARY UTILITY AERIAL RELOCATION ROUTE

POWER & ALARM FOR PUMPS

**EXISTING BRIDGE DATA**  
 YEAR BUILT = 1936  
 SINGLE SPAN ROLLED BEAM  
 OVERALL LENGTH = 18.90m (62')  
 CLEAR SPAN = 17.98m (59')  
 ROADWAY WIDTH = 7.32m (24')

REV. NO.	DATE	BY	DESCRIPTION
△	2/18/2011	VAOT	ADDED SIDEWALK AND CURBING.

**PROJECT: EAST MONTPELIER** PROJECT NO.: BRF 037-2 (8)

DESIGN FILE NAME: 86e054/structures/SidewalkChange/Layout Sheet 2.dgn  
 IPARM FILE NAME: se0541a2.i PLOT DATE: 23-FEB-2011  
 SURVEYED BY: R. MOREAU SURVEY DATE: 3/93  
 SQUAD LEADER: C.P. WILLIAMS DRAWN BY: L.J. STONE  
 LAYOUT SHEET 2 SHEET: 10A OF 63