

REMOVAL AND DISPOSAL OF GUARDRAIL
 STA 1+086.000 LT - 1+109.000 LT
 STA 1+104.500 RT - 1+107.500 RT
 STA 1+129.000 RT - 1+144.500 RT
 STA 1+129.000 LT - 1+130.500 LT

CONSTRUCT DRIVE**
 STA 1+092.000 RT - W/3000 PAVED APRON
 STA 1+135.000 LT - PAVED DRIVE
 STA 1+150.000 RT - PAVED DRIVE

BRIDGE RAILING, 3 RAIL ALUMINUM
 STA 1+110.070 LT - 1+129.850 LT
 STA 1+110.070 RT - 1+129.520 RT

HD STEEL BEAM GUARDRAIL, GALVANIZED
 STA 1+085.600 LT - 1+102.460 LT
 STA 1+095.200 RT - 1+102.460 RT
 STA 1+137.140 RT - 1+144.080 RT

ANCHOR FOR STEEL BEAM RAIL
 STA 1+085.000 LT
 STA 1+097.000 RT
 STA 1+143.000 RT

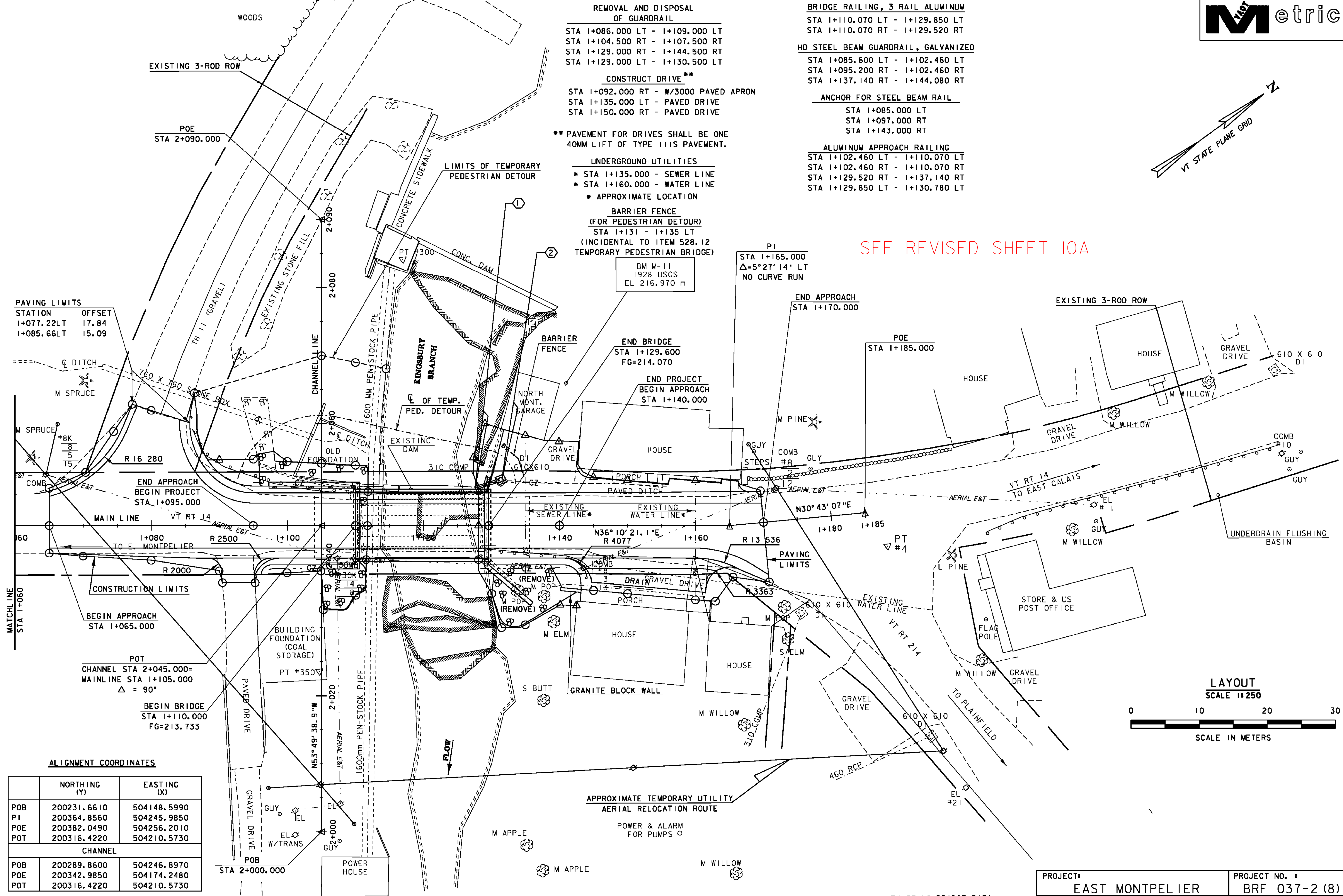
ALUMINUM APPROACH RAILING
 STA 1+102.460 LT - 1+110.070 LT
 STA 1+102.460 RT - 1+110.070 RT
 STA 1+129.520 RT - 1+137.140 RT
 STA 1+129.850 LT - 1+130.780 LT

** PAVEMENT FOR DRIVES SHALL BE ONE 40MM LIFT OF TYPE III S PAVEMENT.

UNDERGROUND UTILITIES
 * STA 1+135.000 - SEWER LINE
 * STA 1+160.000 - WATER LINE
 * APPROXIMATE LOCATION

BARRIER FENCE (FOR PEDESTRIAN DETOUR)
 STA 1+131 - 1+135 LT
 (INCIDENTAL TO ITEM 528.12 TEMPORARY PEDESTRIAN BRIDGE)

SEE REVISED SHEET 10A



PAVING LIMITS

STATION	OFFSET
1+077.22LT	17.84
1+085.66LT	15.09

CONSTRUCTION LIMITS

BEGIN APPROACH STA 1+065.000

POT CHANNEL STA 2+045.000 = MAINLINE STA 1+105.000 Δ = 90°

BEGIN BRIDGE STA 1+110.000 FG=213.733

ALIGNMENT COORDINATES

	NORTHING (Y)	EASTING (X)
POB	200231.6610	504148.5990
PI	200364.8560	504245.9850
POE	200382.0490	504256.2010
POT	200316.4220	504210.5730
CHANNEL		
POB	200289.8600	504246.8970
POE	200342.9850	504174.2480
POT	200316.4220	504210.5730

DATUM

VERTICAL	USGS
HORIZONTAL	ASSUMED

① - ② SEE PIPE SECTIONS AND DRAINAGE DETAIL SHEET

APPROXIMATE TEMPORARY UTILITY AERIAL RELOCATION ROUTE

POWER & ALARM FOR PUMPS

EXISTING BRIDGE DATA
 YEAR BUILT = 1936
 SINGLE SPAN ROLLED BEAM
 OVERALL LENGTH = 18.90m (62')
 CLEAR SPAN = 17.98m (59')
 ROADWAY WIDTH = 7.32m (24')

PROJECT:	EAST MONTPELIER	PROJECT NO.:	BRF 037-2 (8)
DESIGN FILE NAME:	86e054/structures/s86e054bdr.dgn	PLOT DATE:	18-AUG-2010
IPARM FILE NAME:	se054ia2.i	SURVEY DATE:	3/93
SURVEYED BY:	R. MOREAU	DRAWN BY:	L. J. STONE
SQUAD LEADER:	C.P. WILLIAMS	SHEET:	10 OF 63
LAYOUT SHEET 2			

