

SHOP DRAWING REVIEW

REVIEWED AS REQUIRED BY THE CONSTRUCTION CONTRACT DOCUMENTS AND APPROVED, BUT ONLY FOR CONFORMANCE TO THE DESIGN CONCEPT OF THE WORK, AND SUBJECT TO FURTHER LIMITATIONS AND REQUIREMENTS CONTAINED IN THE CONSTRUCTION CONTRACT DOCUMENTS.

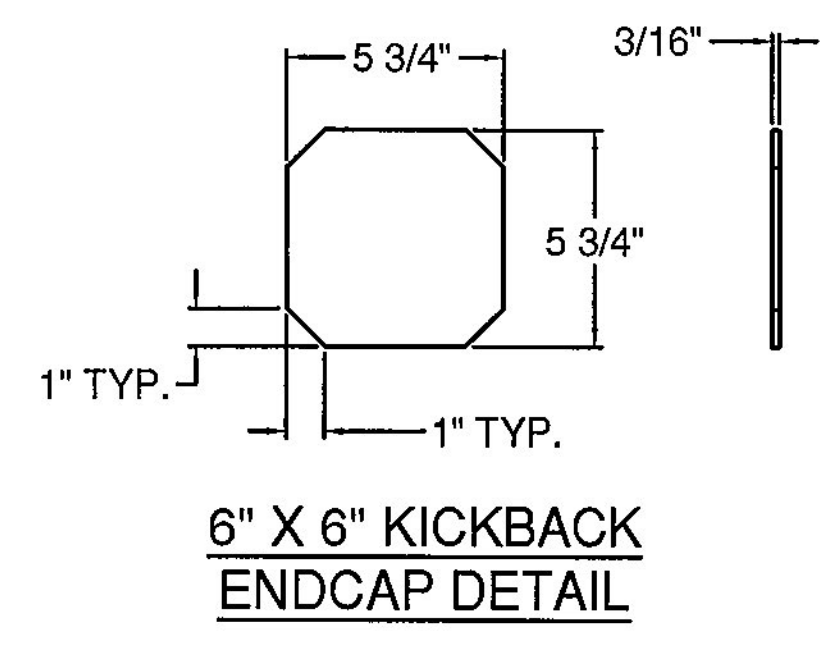
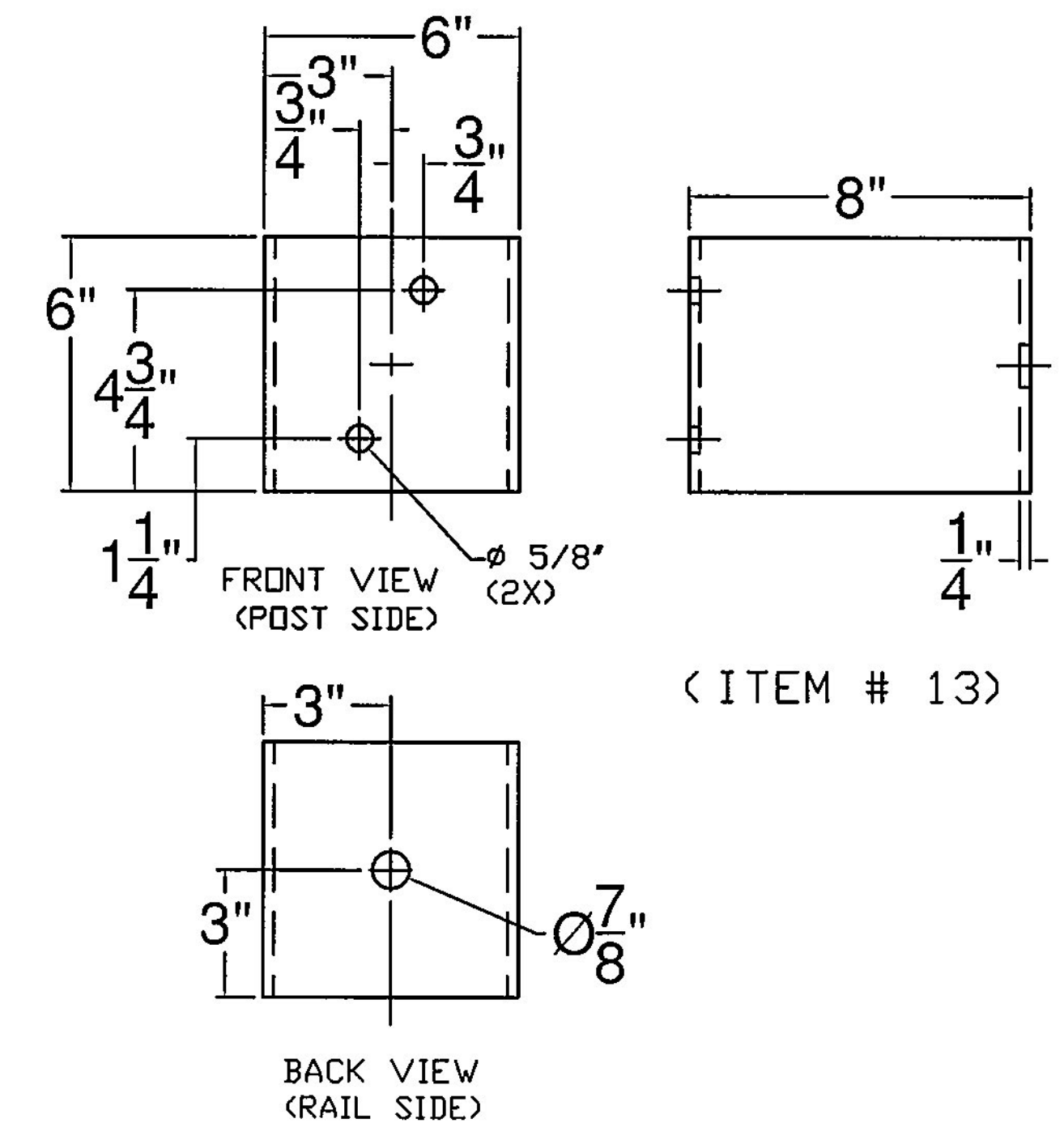
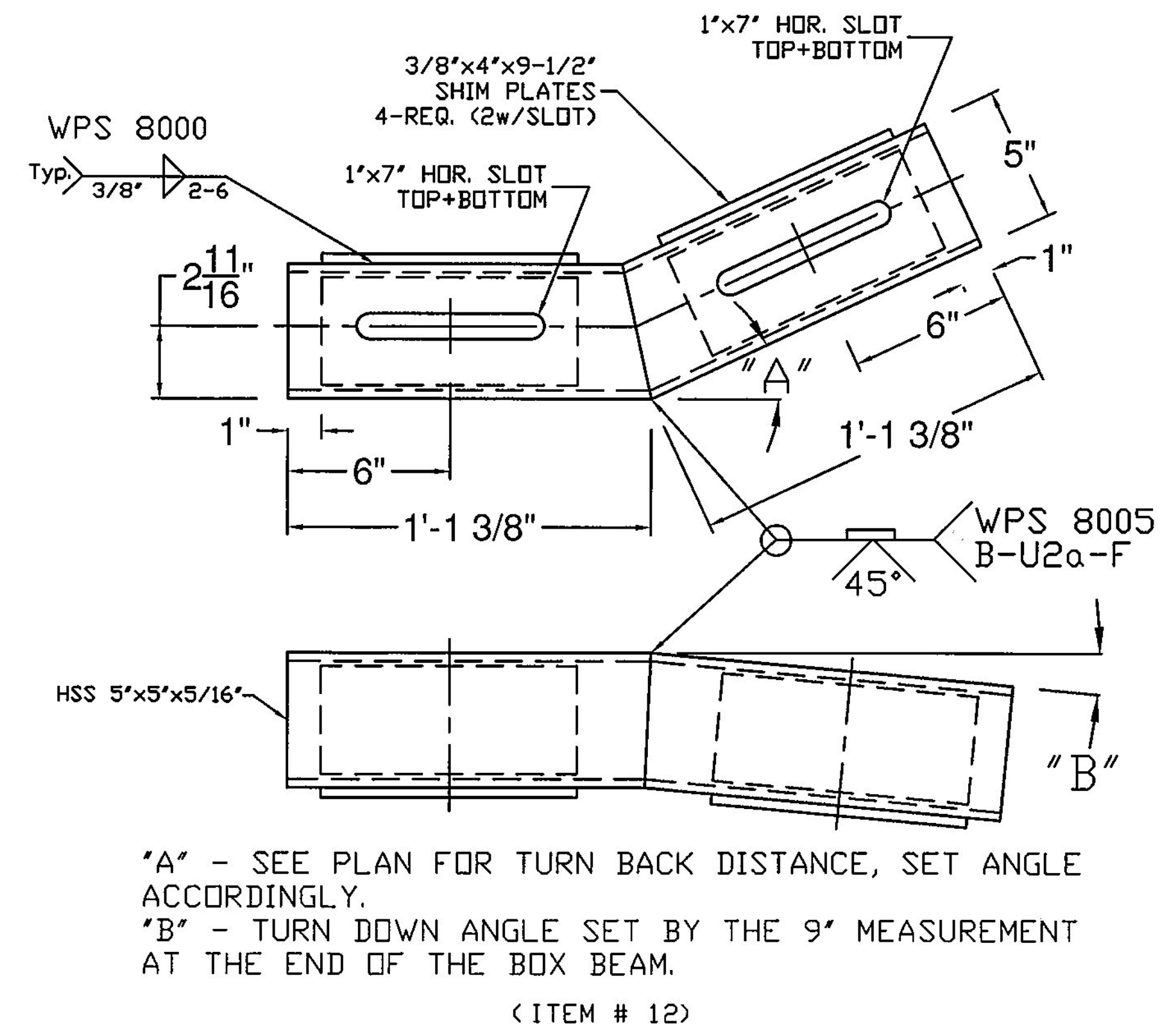
REJECTED REVISE AND RESUBMIT APPROVED AS NOTED

CORRECTIONS OR COMMENTS MADE ON THE SHOP DRAWINGS DURING THIS REVIEW DID NOT RELIEVE CONTRACTOR FROM COMPLIANCE WITH REQUIREMENTS OF THE DRAWINGS AND SPECIFICATIONS. THIS CHECK IS ONLY FOR REVIEW OF GENERAL CONFORMANCE WITH THE DESIGN CONCEPT OF THE PROJECT AND GENERAL COMPLIANCE WITH THE INFORMATION GIVEN IN THE CONTRACT DOCUMENTS. THE CONTRACTOR IS RESPONSIBLE FOR: CONFIRMING AND CORRELATING ALL QUANTITIES AND DIMENSIONS; SELECTING FABRICATION PROCESSES AND TECHNIQUES OF CONSTRUCTION; COORDINATING THEIR WORK WITH THAT OF ALL OTHER TRADES; AND PERFORMING THEIR WORK IN A SAFE AND SATISFACTORY MANNER.

CLD Consulting Engineers
540 Commercial Street
Manchester, NH 03101
603-689-8225

Job Number: 140116
Reviewed by: S. Beumont
Date: 02/27/2017

Vermont Agency of Transportation
RECEIVED
CK'D BY CLD/RYAN OK'D BY WPELLETIER
February 27, 2017
RESUBMIT nO Approved AsNoted
BY WPELLETIER DATE 03/02/2017



ITEM #: 621.72
STRUCTURAL STEEL TO COMPLY W/ ASTM A6
TOLERANCE UNLESS OTHERWISE NOTED:
FRACTIONS = ± 1/16"
ANGLES = ± 1/2"
DIAMETERS = ± 1/32"

SHEET 3 OF 4

TRANSITION - CONCRETE PARAPET TO HIGHWAY GUIDE RAIL
VT. ROUTE 2B (URBAN MINOR ARTERIAL) BRIDGE #6
TOWN OF ST. JOHNSBURY, CALEDONIA COUNTY, VT.

R NO.	DATE	DESCRIPTION	BY	R NO.	DATE	DESCRIPTION	BY
E				E			
V				V			

ELDERLEE, INC.
OAKS CORNERS, NEW YORK 14518
email: dlong@elderlee.com / eps@elderlee.com
Tel: 315-789-6670 Fax: 315-789-6615

CERTIFIED FABRICATOR
ORTHOGONAL PROJECTION

DRAWN E.P. 2/15/17
CHECKED D.L. 2/15/17
APPROVED
SCALE SCHEMATIC
DRAWING NO. FRL-ST. JOHNSBURY (20)