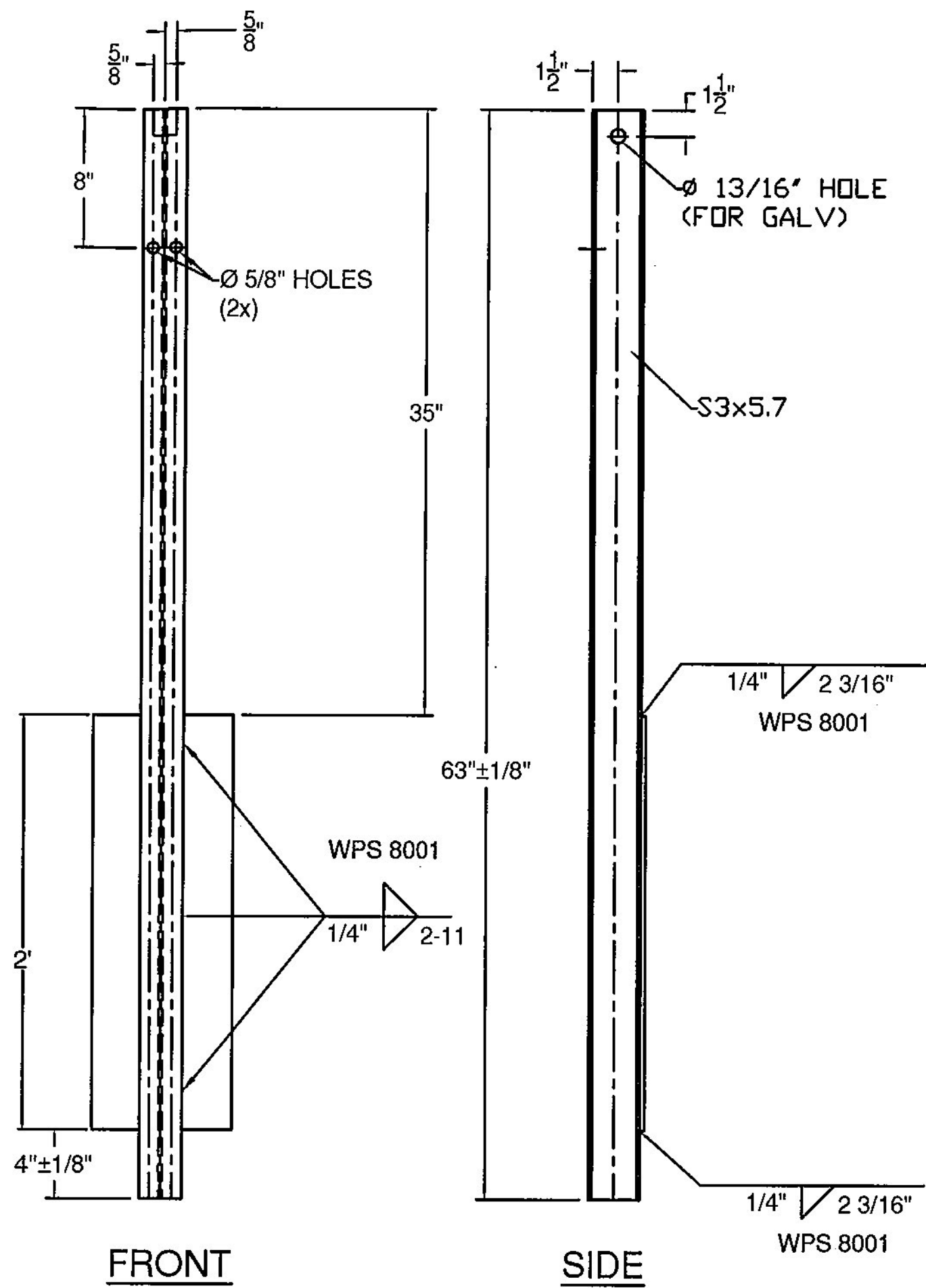
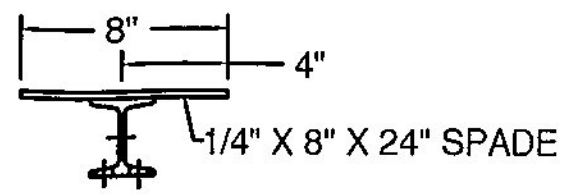
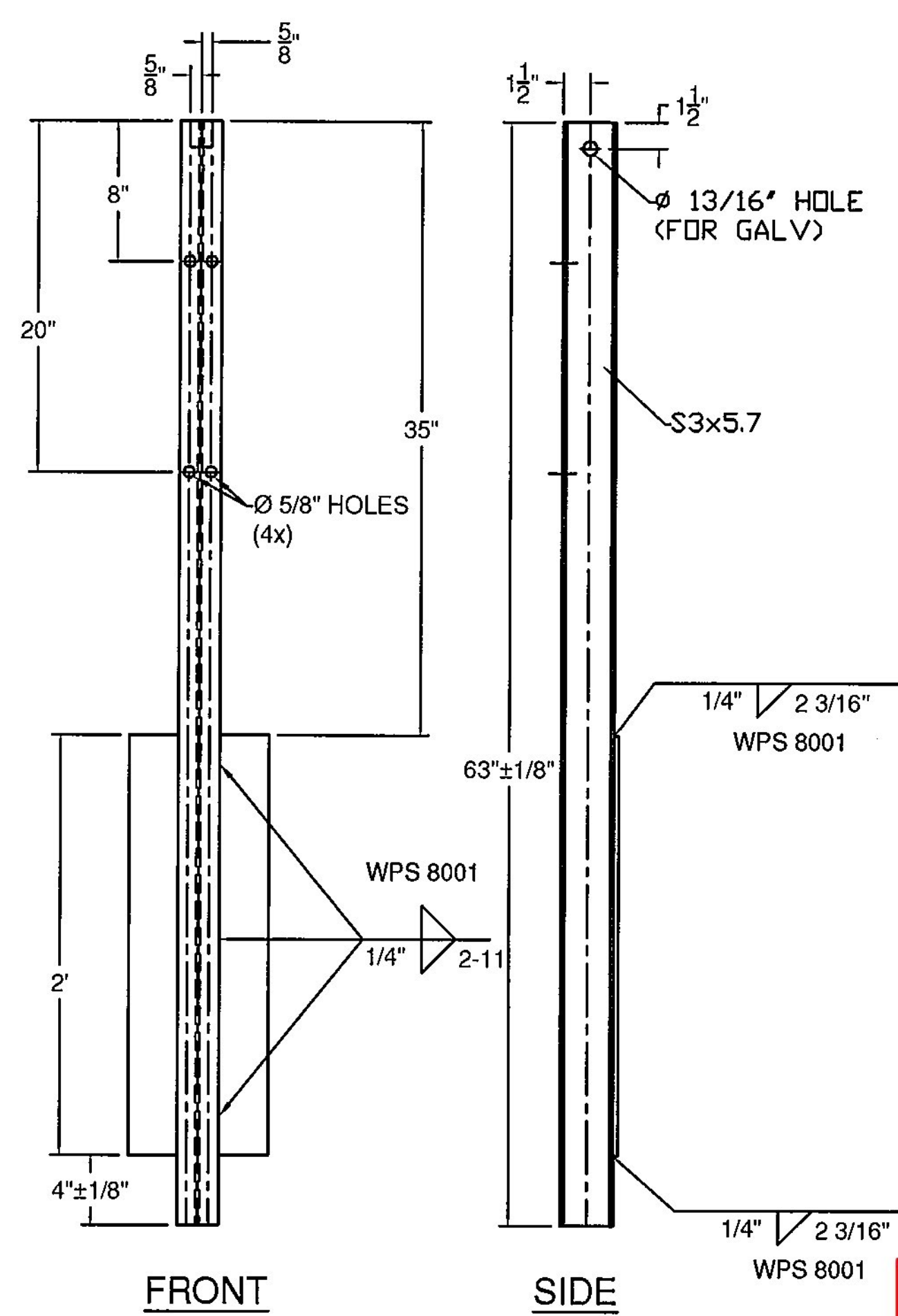
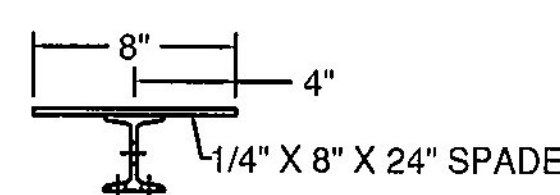


PLAN VIEW



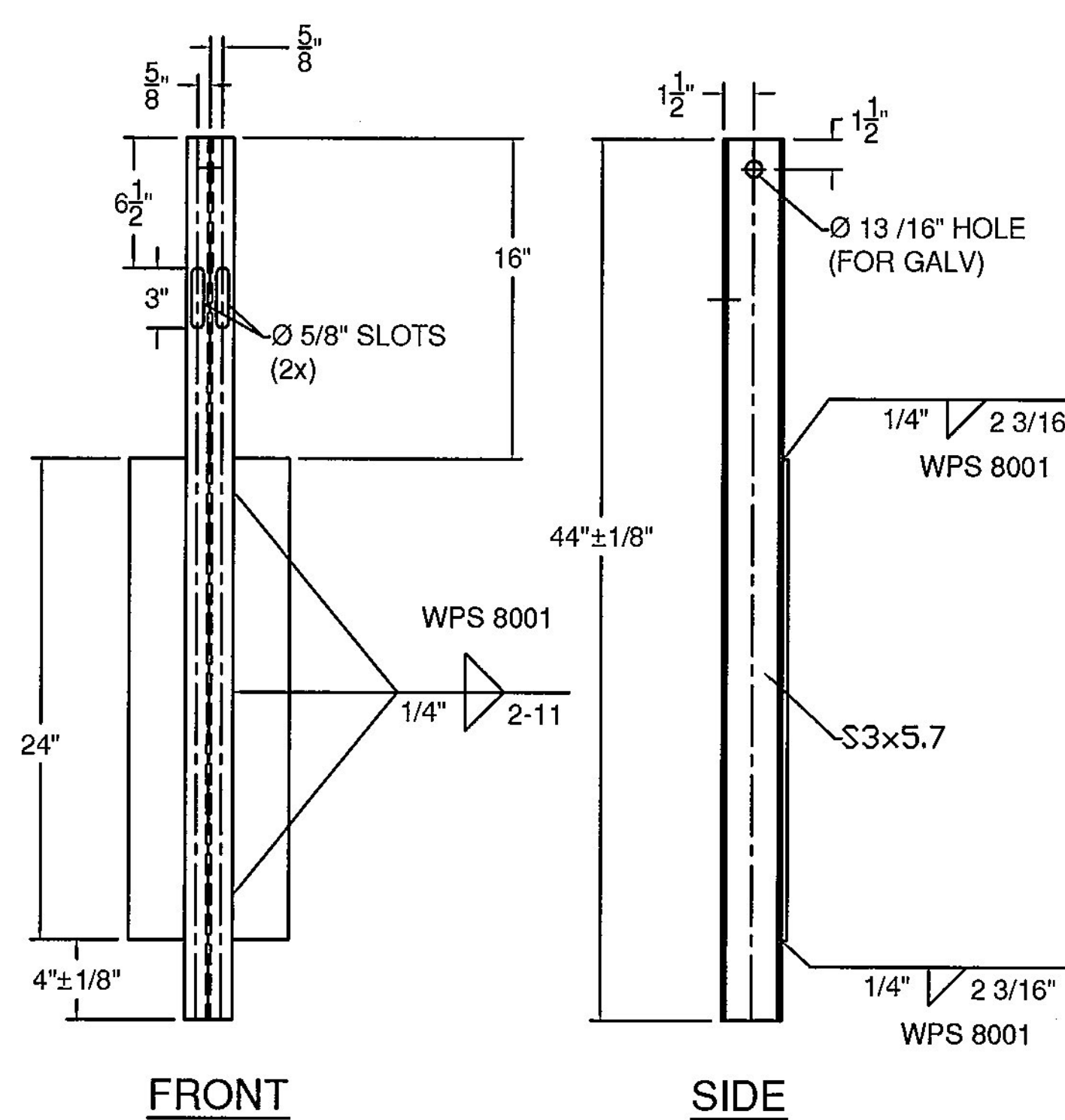
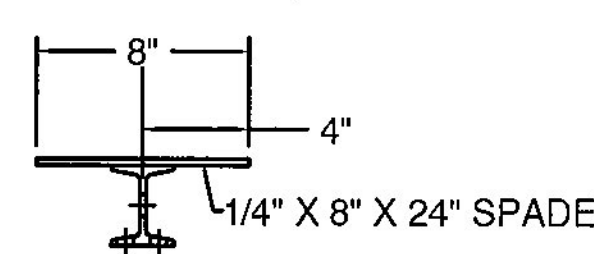
(ITEM # 1)

PLAN VIEW



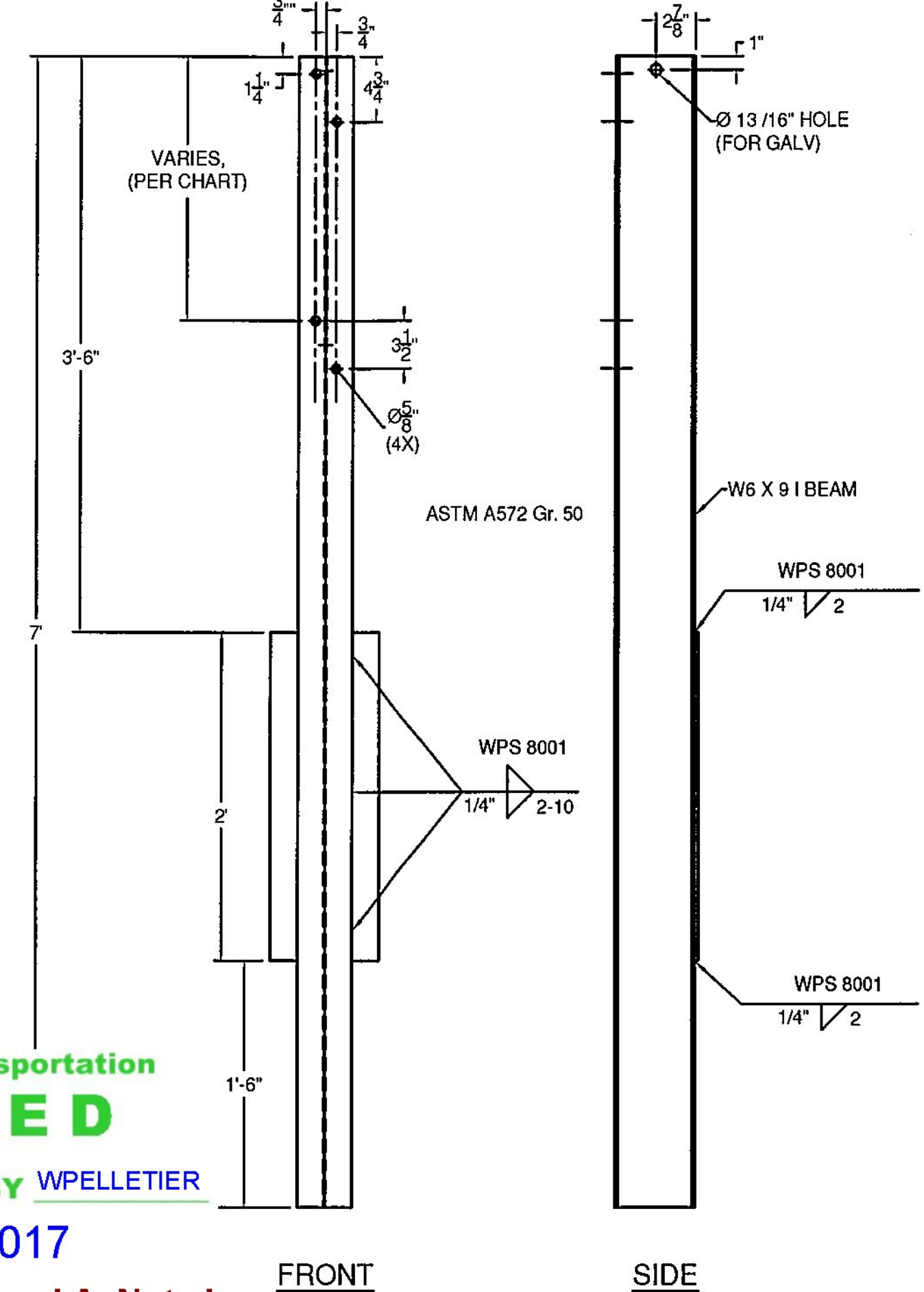
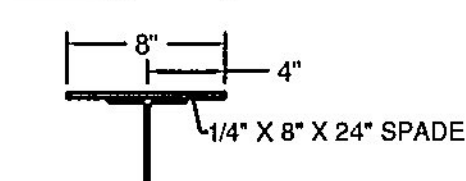
(ITEM # 2)

PLAN VIEW



(ITEM # 3)

PLAN VIEW



(ITEM # 4)

POST	LENGTH
1	1'-6 15/16"
2	1'-6 9/8"
3	1'-6 5/16"
4	1'-5 15/16"

**SHOP DRAWING REVIEW**

REVIEWED AS REQUIRED BY THE CONSTRUCTION CONTRACT DOCUMENTS AND APPROVED, BUT ONLY FOR CONFORMANCE TO THE DESIGN CONCEPT OF THE WORK, AND SUBJECT TO FURTHER LIMITATIONS AND REQUIREMENTS CONTAINED IN THE CONSTRUCTION CONTRACT DOCUMENTS.

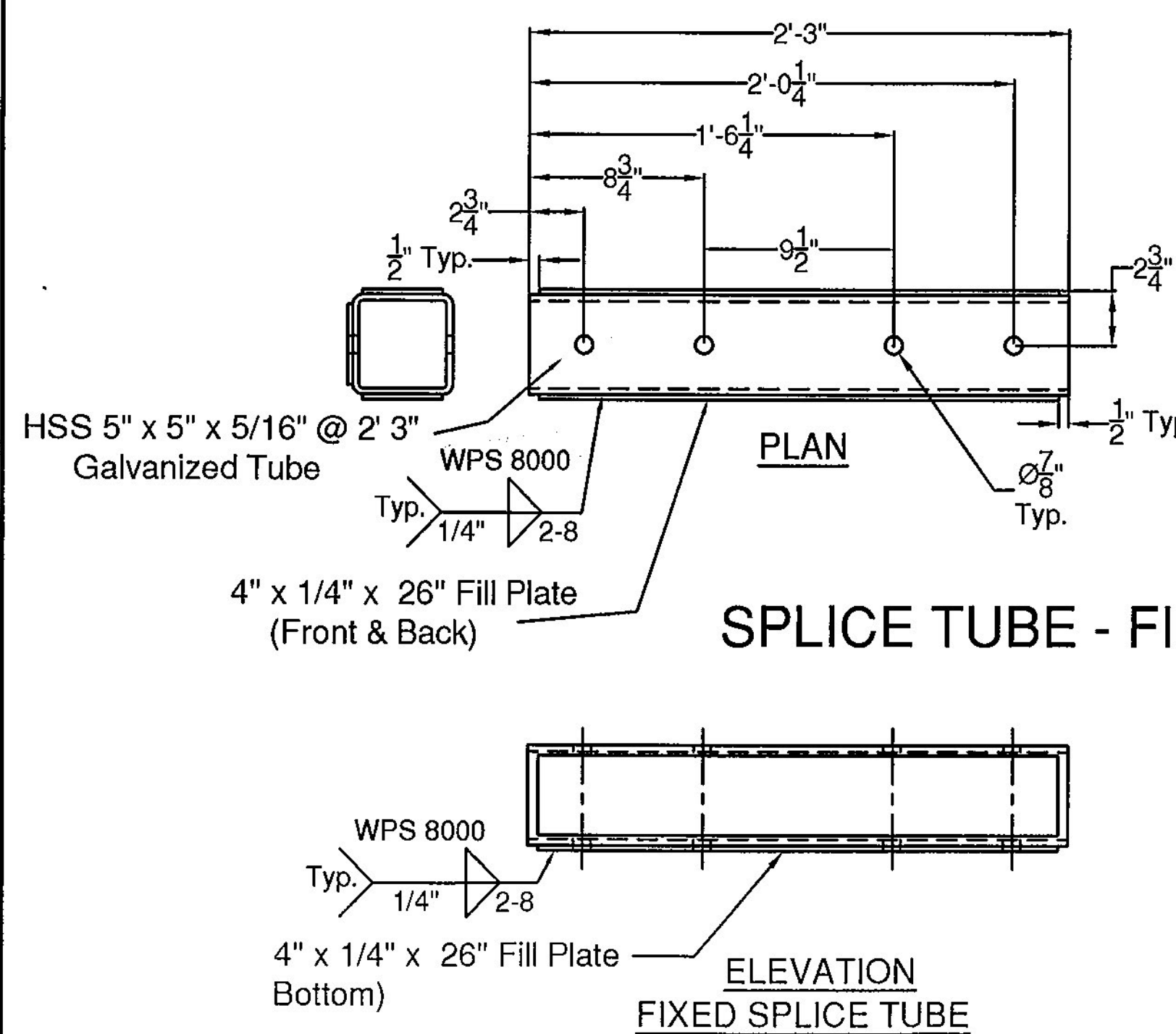
REJECTED  REVISE AND RESUBMIT  APPROVED AS NOTED

CORRECTIONS OR COMMENTS MADE ON THE SHOP DRAWINGS DURING THIS REVIEW DID NOT RELIEVE CONTRACTOR FROM COMPLIANCE WITH REQUIREMENTS OF THE DRAWINGS AND SPECIFICATIONS. THIS CHECK IS ONLY FOR REVIEW OF GENERAL CONFORMANCE WITH THE DESIGN CONCEPT OF THE PROJECT AND GENERAL COMPLIANCE WITH THE INFORMATION GIVEN IN THE CONTRACT DOCUMENTS. THE CONTRACTOR IS RESPONSIBLE FOR CONFIRMING AND CORRELATING ALL QUANTITIES AND DIMENSIONS; SELECTING FABRICATION PROCESSES AND TECHNIQUES OF CONSTRUCTION; COORDINATING THEIR WORK WITH THAT OF ALL OTHER TRADES; AND PERFORMING THEIR WORK IN A SAFE AND SATISFACTORY MANNER.

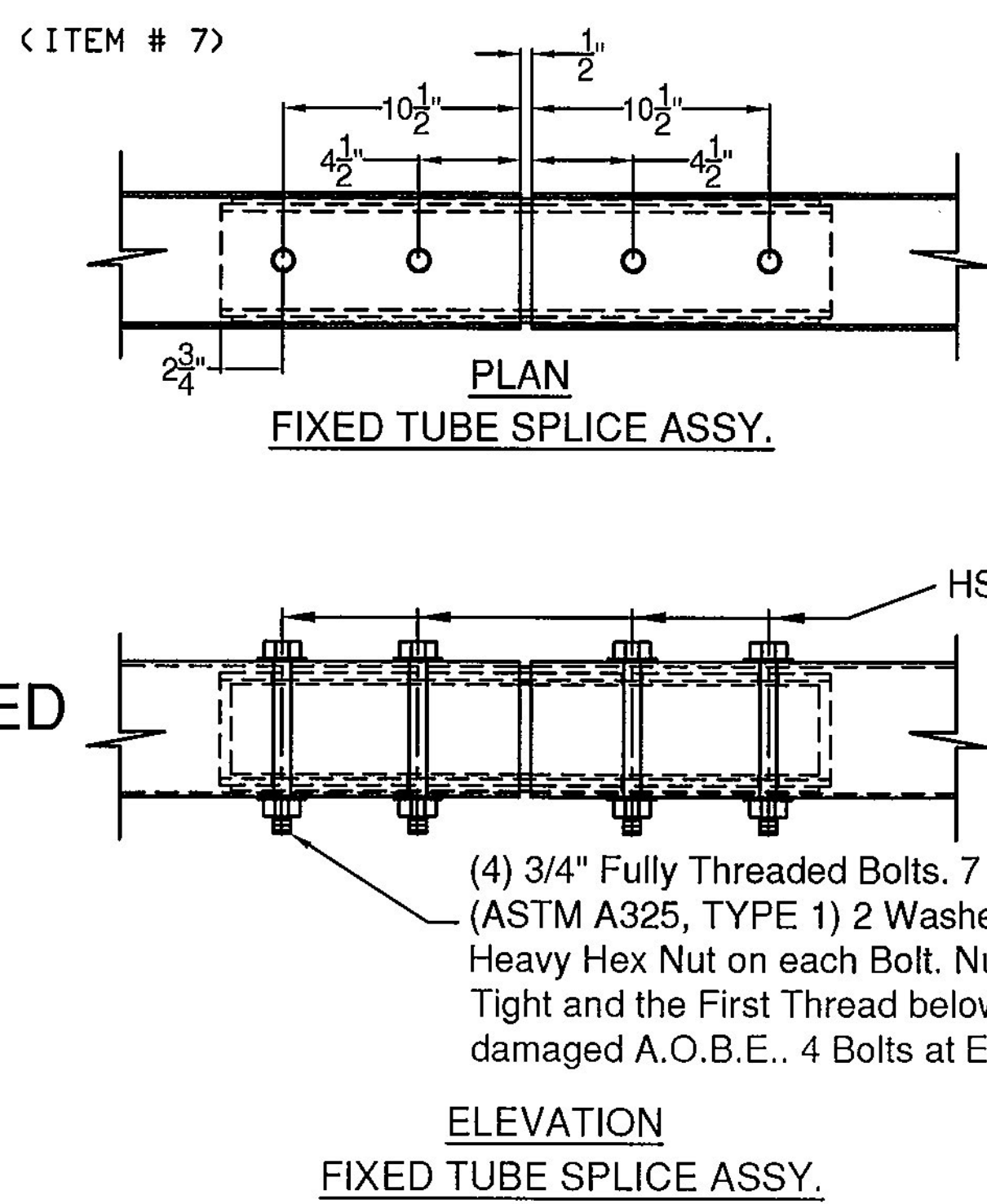
CLD Consulting Engineers  
580 Commercial Street  
Manchester, NH 03101  
603-888-8253

Job Number: 140116  
Reviewed by: S. Beaumont  
Date: 02/27/2017

Vermont Agency of Transportation  
**RECEIVED**  
CK'D BY CLD/RVYAN OK'D BY WPELLETIER  
February 27, 2017  
RESUBMIT nO Approved AsNoted  
BY WPELLETIER DATE 03/02/2017

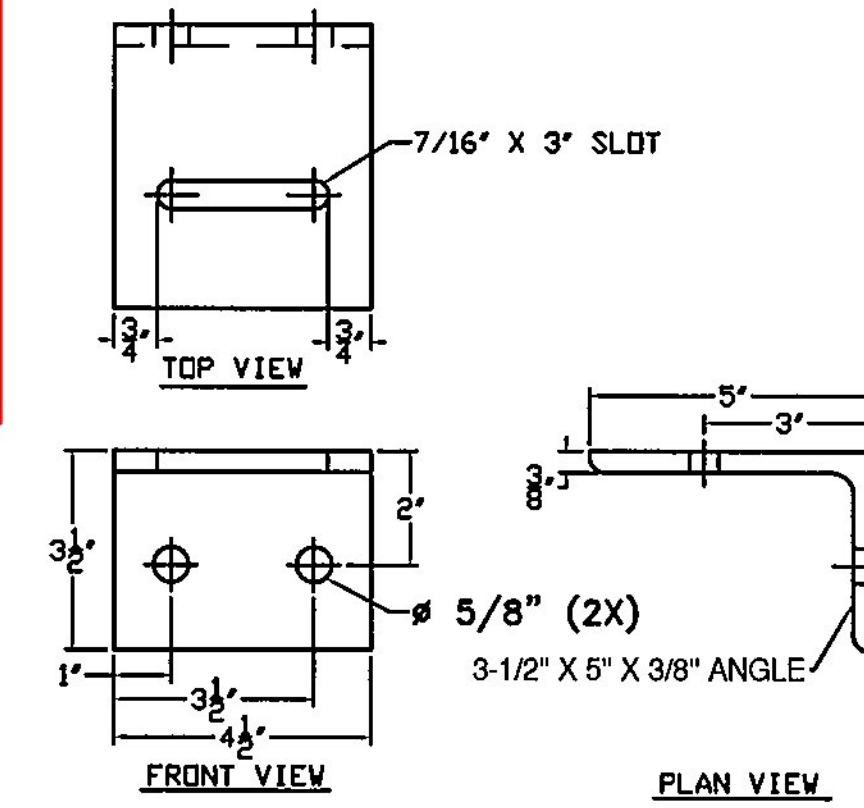


SPLICE TUBE - FIXED

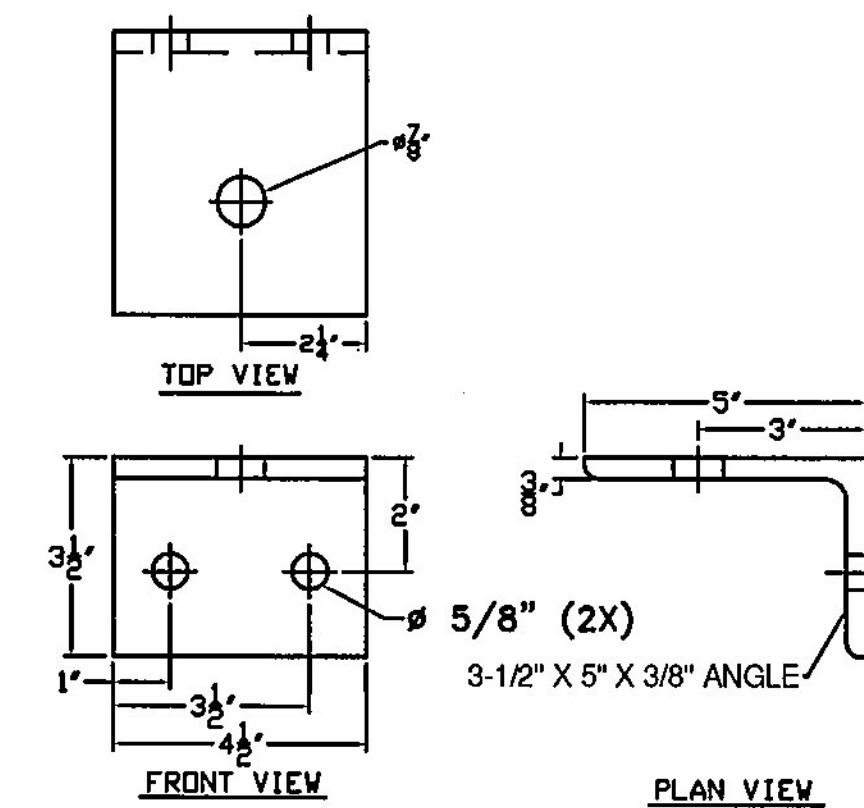


ELEVATION  
FIXED TUBE SPLICE ASSY.

(4) 3/4" Fully Threaded Bolts, 7 1/2" Long (ASTM A325, TYPE 1) 2 Washers and a Heavy Hex Nut on each Bolt. Nut to be Finger Tight and the First Thread below the nut to be damaged A.O.B.E.. 4 Bolts at Each Splice.



(ITEM # 10)



(ITEM # 11)

ITEM #: 621.72  
STRUCTURAL STEEL TO COMPLY W/ ASTM A6 TOLERANCE UNLESS OTHERWISE NOTED:  
FRACTIONS = ± 1/16"  
ANGLES = ± 1/2"  
DIAMETERS = ± 1/32"

SHEET 2 OF 4

**TRANSITION - CONCRETE PARAPET TO HIGHWAY GUIDE RAIL**  
VT. ROUTE 2B (URBAN MINOR ARTERIAL) BRIDGE #6  
TOWN OF ST. JOHNSBURY, CALEDONIA COUNTY, VT.

R NO.	DATE	DESCRIPTION	BY	R NO.	DATE	DESCRIPTION	BY
E				E			

DRAWN	E.P.	2/15/17
CHECKED	D.L.	2/15/17
APPROVED		
SCALE	SCHEMATIC	
DRAWING NO. FRL-ST. JOHNSBURY (20)		

**ELDERLEE, INC.**  
OAKS CORNERS, NEW YORK 14518  
email: dlong@elderlee.com / epeak@elderlee.com  
Tel: 315-789-6670 Fax: 315-789-6615