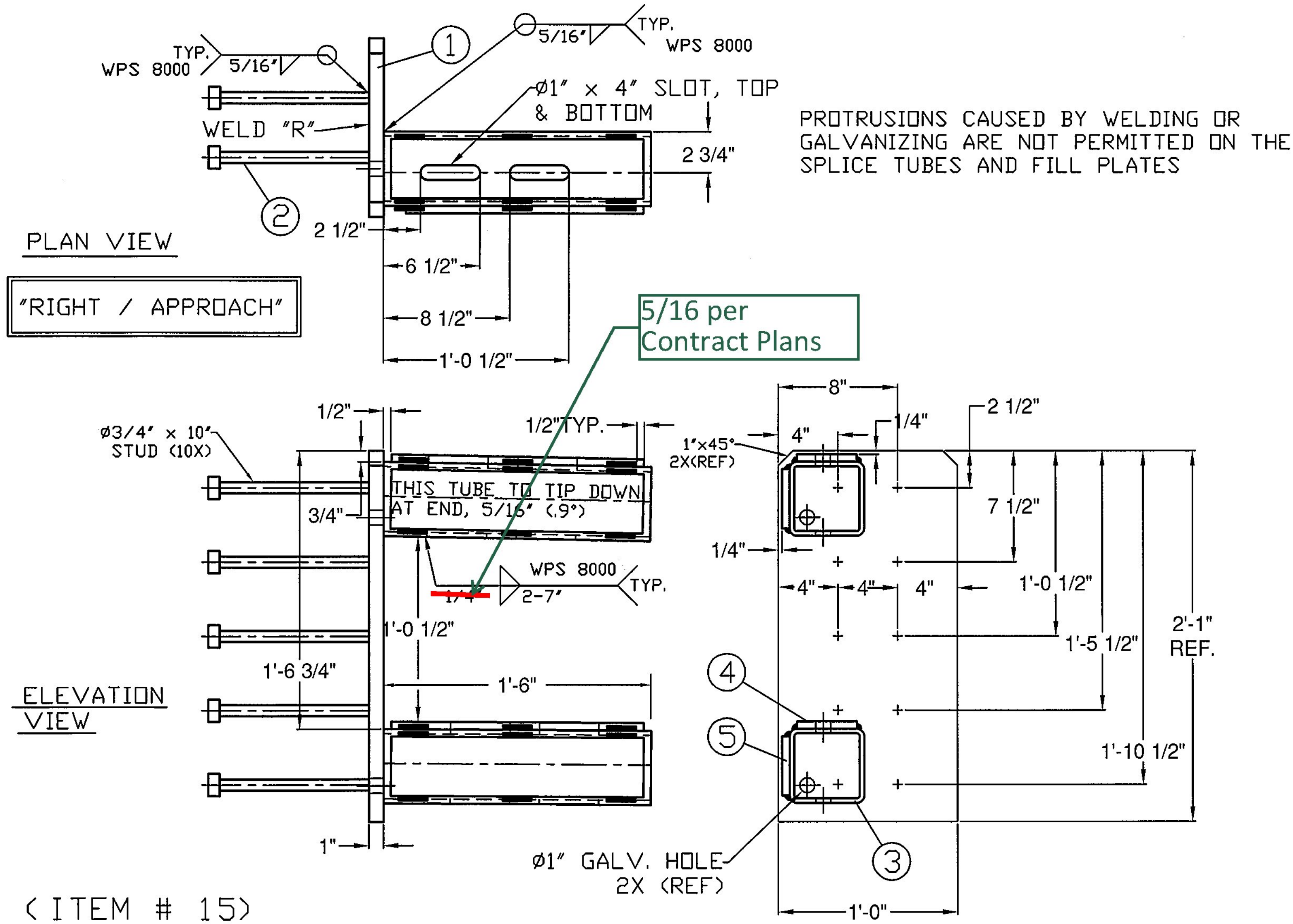
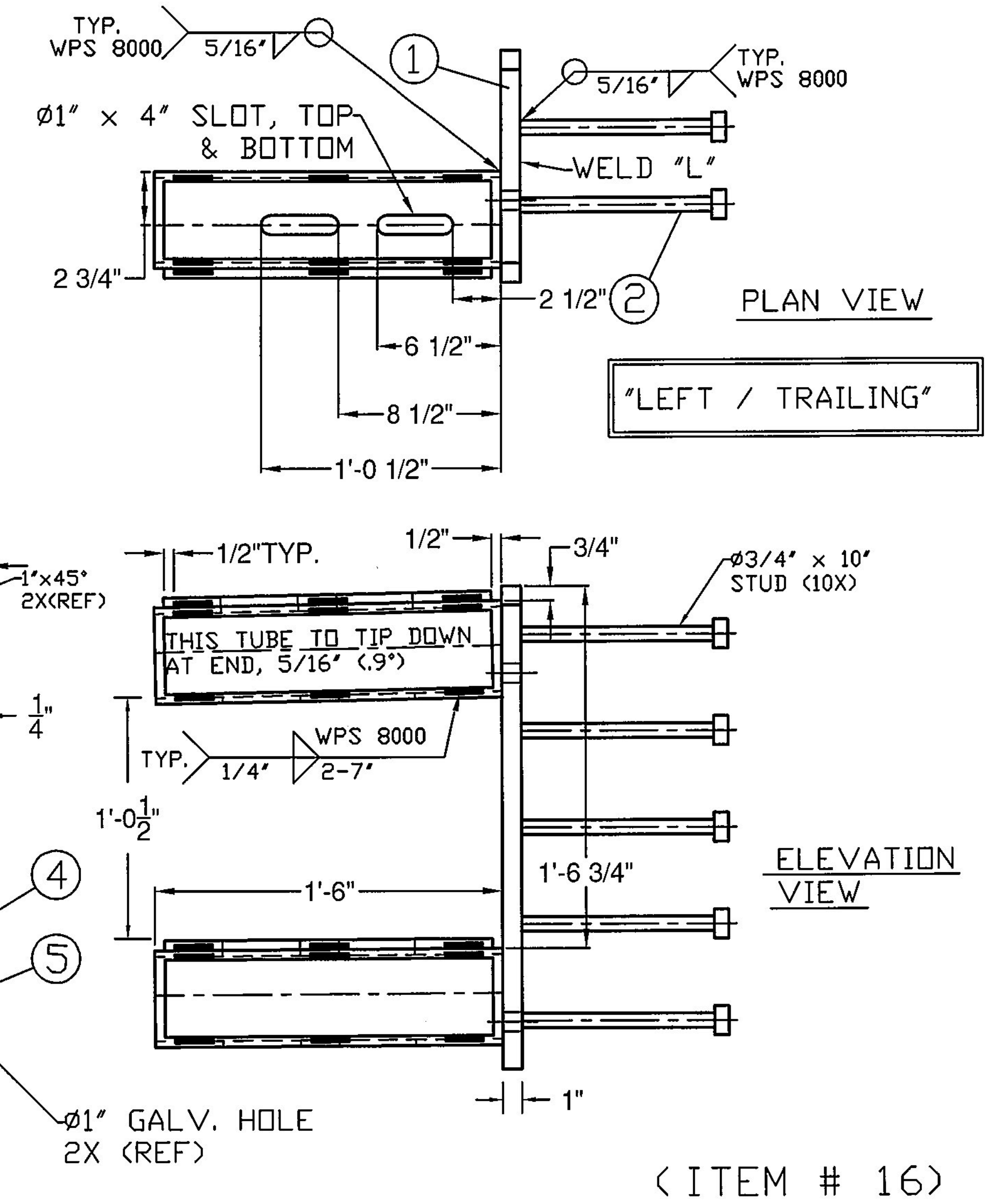


BILL OF MATERIALS			
ITEM #	QTY	DESCRIPTION	ASTM #
1	1	DBL TUBE WALL PLATE - 1' X 12" X 25'	ASTM A572 Gr. 50
2	10	Ø3/4" X 10" STUD	TO BE PURCHASED
3	2	5' X 5' X 5/16" TUBE W/ SLOTS @ 18"	ASTM A500 Gr. B
4	2	SHIM PL 1/2" X 4" X 17" W/ SLOTS	ASTM A709 Gr. 36
5	2	SHIM PL 1/2" X 4" X 17" (W/O SLOTS)	ASTM A709 Gr. 36

BILL OF MATERIALS			
ITEM #	QTY	DESCRIPTION	ASTM #
1	1	DBL TUBE WALL PLATE - 1' X 12" X 25'	ASTM A572 Gr. 50
2	10	Ø3/4" X 10" STUD	TO BE PURCHASED
3	2	5' X 5' X 5/16" TUBE W/ SLOTS @ 18"	ASTM A500 Gr. B
4	2	SHIM PL 1/2" X 4" X 17" W/ SLOTS	ASTM A709 Gr. 36
5	2	SHIM PL 1/2" X 4" X 17" (W/O SLOTS)	ASTM A709 Gr. 36



PROTRUSIONS CAUSED BY WELDING OR GALVANIZING ARE NOT PERMITTED ON THE SPLICE TUBES AND FILL PLATES



**SHOP DRAWING REVIEW**

REVIEWED AS REQUIRED BY THE CONSTRUCTION CONTRACT DOCUMENTS AND APPROVED, BUT ONLY FOR CONFORMANCE TO THE DESIGN CONCEPT OF THE WORK, AND SUBJECT TO FURTHER LIMITATIONS AND REQUIREMENTS CONTAINED IN THE CONSTRUCTION CONTRACT DOCUMENTS.

REJECTED  REVISE AND RESUBMIT  APPROVED AS NOTED

CORRECTIONS OR COMMENTS MADE ON THE SHOP DRAWINGS DURING THIS REVIEW DID NOT RELIEVE CONTRACTOR FROM COMPLIANCE WITH REQUIREMENTS OF THE DRAWINGS AND SPECIFICATIONS. THIS CHECK IS ONLY FOR REVIEW OF GENERAL CONFORMANCE WITH THE INFORMATION GIVEN IN THE CONTRACT DOCUMENTS. THE CONTRACTOR IS RESPONSIBLE FOR CONFIRMING AND CORRELATING ALL QUANTITIES AND DIMENSIONS; SELECTING FABRICATION PROCESSES AND TECHNIQUES OF CONSTRUCTION; COORDINATING THEIR WORK WITH THAT OF ALL OTHER TRADES; AND PERFORMING THEIR WORK IN A SAFE AND SATISFACTORY MANNER.

CLD Consulting Engineers  
240 Commercial Street  
Manchester, NH 03101  
603-468-6223

Job Number: 140116  
Reviewed by: S. Beaumont  
Date: 02/27/2017

Vermont Agency of Transportation  
**RECEIVED**  
CK'D BY CLD/Ryan OK'D BY WPELLETIER  
February 27, 2017  
RESUBMIT nO Approved AsNoted  
BY WPELLETIER DATE 03/02/2017

ITEM #: 525.45  
STRUCTURAL STEEL TO COMPLY W/ ASTM A6  
TOLERANCE UNLESS OTHERWISE NOTED:  
FRACTIONS = ± 1/16"  
ANGLES = ± 1/2"  
DIAMETERS = ± 1/32"

BRIDGE RAIL DETAILS SHEET  
VT. ROUTE 2B (URBAN MINOR ARTERIAL) BRIDGE #6  
TOWN OF ST. JOHNSBURY, CALEDONIA COUNTY, VT.

R	NO.	DATE	DESCRIPTION	BY	R	NO.	DATE	DESCRIPTION	BY
E					E				

ELDERLEE, INC.  
OAKS CORNERS, NEW YORK 14518  
email: dlong@elderlee.com / epeek@elderlee.com  
Tel: 315-789-6670 Fax: 315-789-6615

CERTIFIED FABRICATOR  
ORTHOGONAL PROJECTION

DRAWN	E.P.	2/15/17
CHECKED	D.L.	2/15/17
APPROVED		
SCALE	SCHEMATIC	
DRAWING NO. FRL-ST. JOHNSBURY (20)		