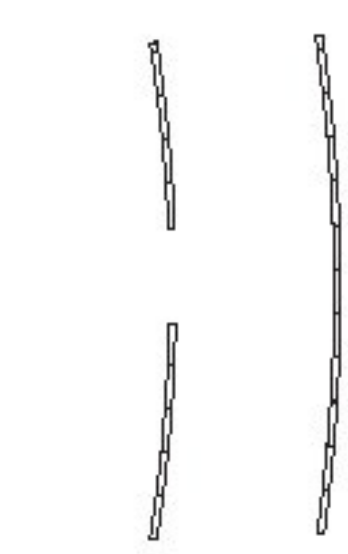
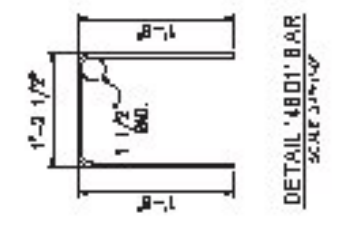
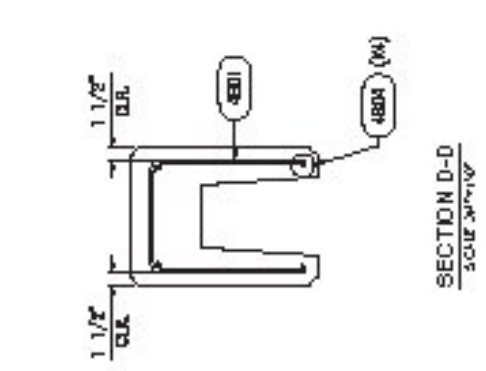
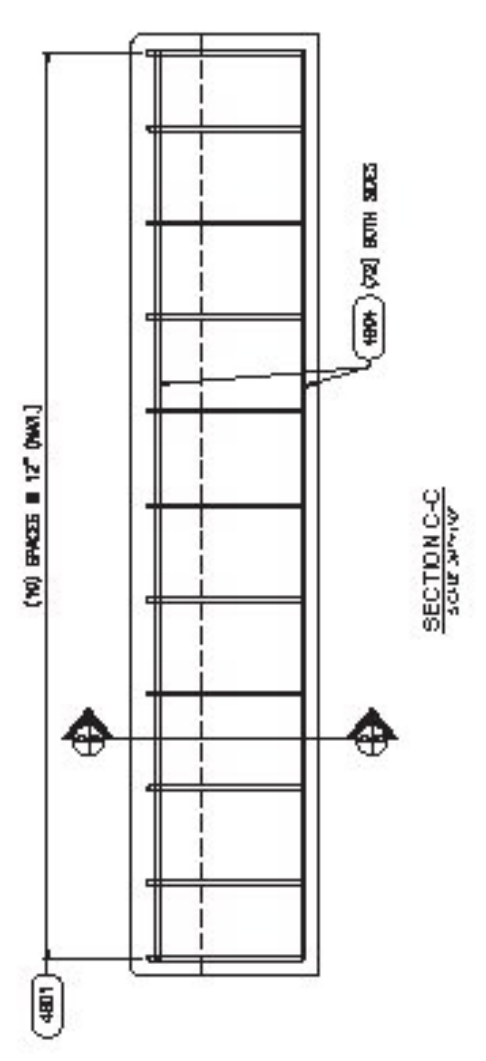
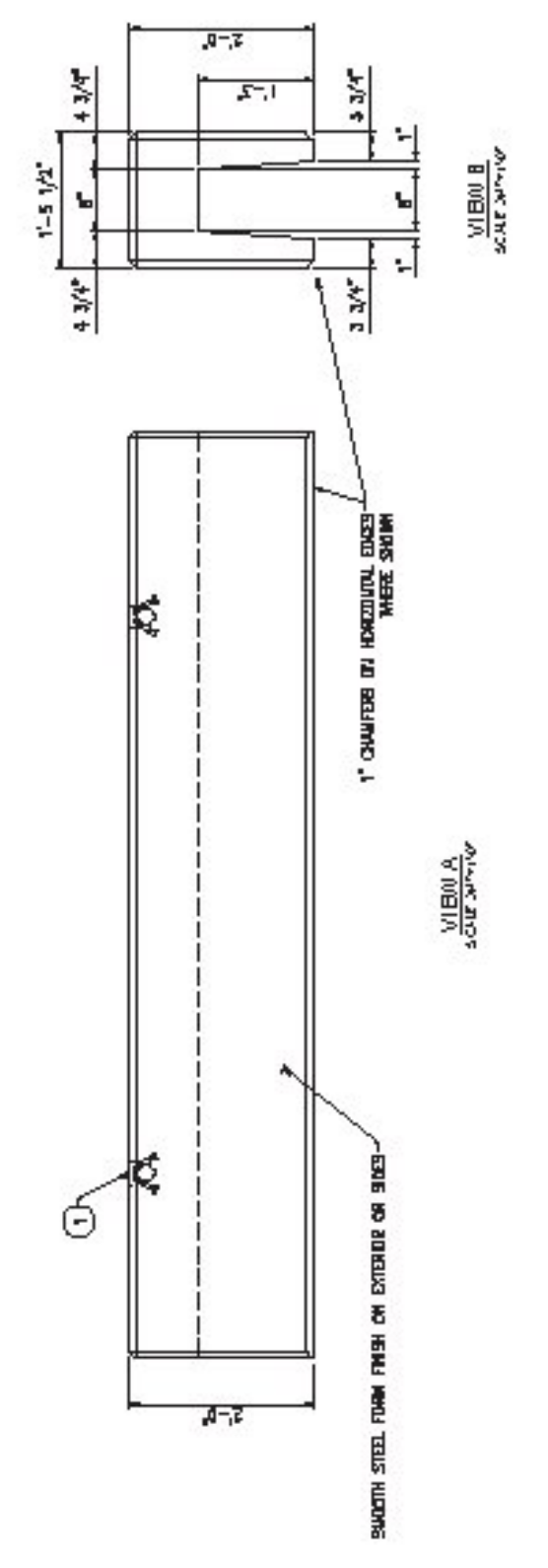


NOTE: ALL LAYERS BEHIND REINFORCEMENT AND LAYERS BEHIND REINFORCEMENT SHALL BE CONCRETE. ALL LAYERS BEHIND REINFORCEMENT SHALL BE CONCRETE.

BAR CHART (EPOXY COATED)						
ID#	QTY/PC	TYPE	SIZE	TYPE	LENGTH	WGT
401	11	11	#4	D	7'-0"	5.0000
402	4	4	#4	SM	8'-0" 3/4"	6.0000

ID#	QTY/PC	TOTAL	DESCRIPTION	WGT
1	2	2	NO. 401A1 7'-0" LONG, 4" DIA.	
2	1	1	NO. 401A2 8'-0" LONG, 4" DIA.	
3	1	1	NO. 401A3 8'-0" LONG, 4" DIA.	

MAXIMUM 2" MAX. CLEARANCE FROM ALL EXISTING SURFACES UNLESS NOTED OTHERWISE.



SHOP DRAWING REVIEW

REVIEWED AS REQUIRED BY THE CONSTRUCTION CONTRACT DOCUMENTS AND APPROVED, BUT ONLY FOR CONFORMANCE TO THE DESIGN CONCEPT OF THE WORK, AND SUBJECT TO FURTHER LIMITATIONS AND REQUIREMENTS CONTAINED IN THE CONSTRUCTION CONTRACT DOCUMENTS.

REJECTED REVISE AND RESUBMIT APPROVED AS NOTED

CORRECTIONS OR COMMENTS MADE ON THE SHOP DRAWINGS DURING THIS REVIEW DO NOT RELIEVE CONTRACTOR FROM COMPLIANCE WITH REQUIREMENTS OF THE DRAWINGS AND SPECIFICATIONS. THIS CHECK IS ONLY FOR REVIEW OF GENERAL CONFORMANCE WITH THE DESIGN CONCEPT OF THE PROJECT AND DOCUMENTS. THE CONTRACTOR IS RESPONSIBLE FOR CORRECTING AND CORRELATING ALL DIMENSIONS AND DIMENSIONS. SELECTING FABRICATION PROCEDURES AND TECHNIQUES OF CONSTRUCTION. COORDINATING THEIR WORK WITH ALL TRADES AND PERFORMING THEIR WORK IN A SAFE AND SATISFACTORY MANNER.

CFD Consulting Engineers
100 Main Street
Manchester, NH 03101
(603) 888-8888

Job Number: 14-0116
Reviewed by: A. GIRALDI
Date: 4/7/17

Vermont Agency of Transportation
RECEIVED
CK'D BY CLD OK'D BY WBP
April 6, 2017
RESUBMIT no Approved
BY WPELLETTIER DATE 04/07/2017

- DESIGN NOTES**
- CONCRETE SHALL BE 4000 PSI STRENGTH, 5% AIR ENTRAINMENT, AND 2.5% MINIMUM SLUMP. ALL SURFACES SHALL BE FINISHED TO A SMOOTH FINISH.
 - ALL SURFACES SHALL BE FINISHED TO A SMOOTH FINISH.
 - ALL SURFACES SHALL BE FINISHED TO A SMOOTH FINISH.
- APPROVED BY: WBP
DATE: 04/07/2017

BAR WEIGHT TOTALS	
#	BAR WGT.



CONCRETE WEIGHT TOTALS	
#	CONCRETE WGT.

CW-3
(1) REQD.