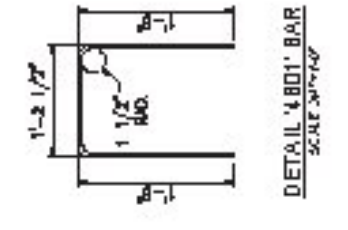
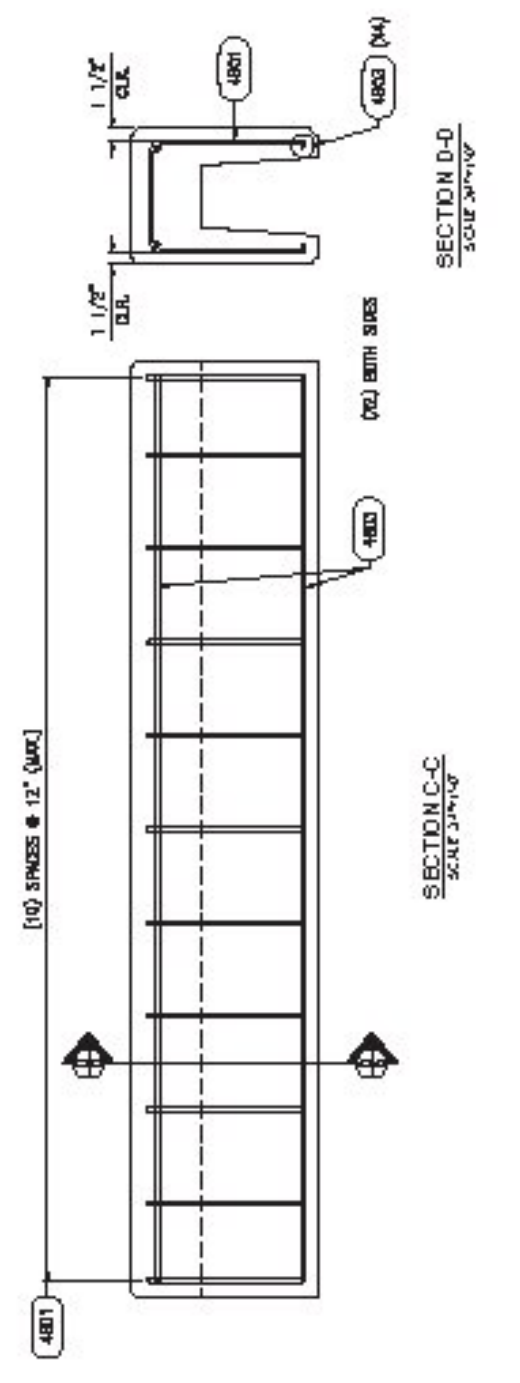
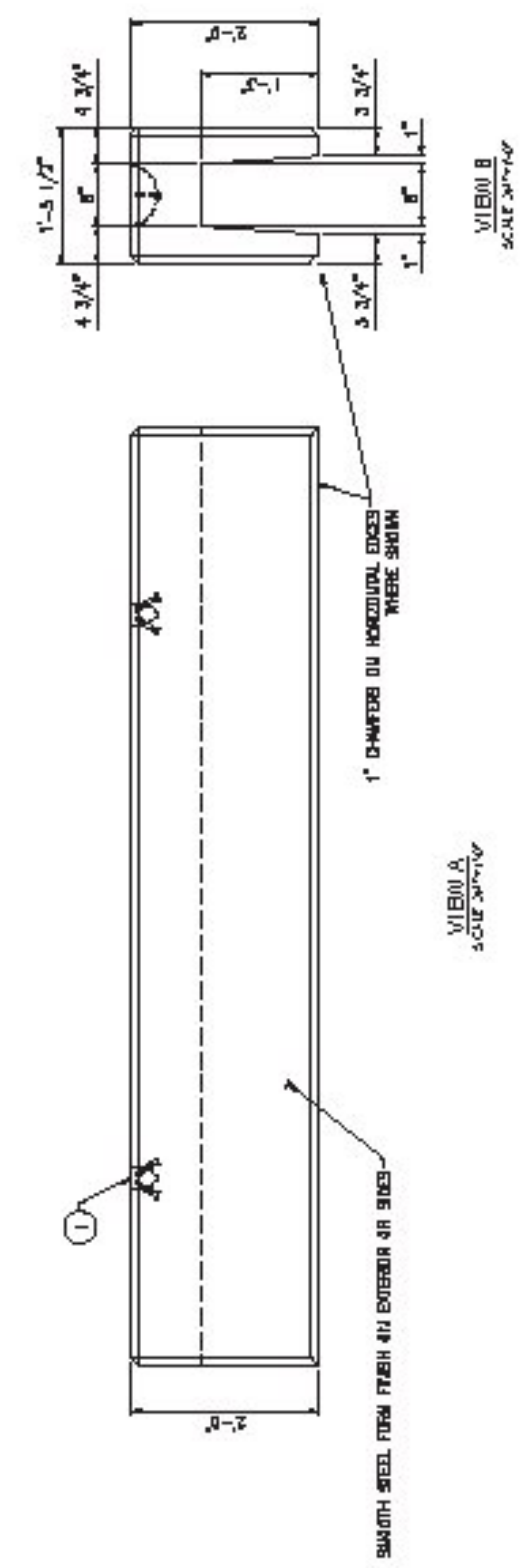


MAINTAIN 2" MIN. CLEARANCE FROM ALL EXISTING SURFACES UNLESS NOTED OTHERWISE.



LEGEND
SEE DRAWING

SHOP DRAWING REVIEW

REVIEWED AS REQUIRED BY THE CONSTRUCTION CONTRACT DOCUMENTS AND COMMENTS MADE BY THE ARCHITECT OR ENGINEER SHALL BE SUBJECT TO THE GENERAL COMPLIANCE WITH THE DESIGN CONCEPT OF THE PROJECT AND DOCUMENTED BY THE CONTRACTOR'S RESPONSIBLE FOR CONFORMING AND SATISFACTORY MANNER.

REVIEWED AND APPROVED
 REJECTED
 REVISE AND RESUBMIT
 APPROVED AS NOTED

CORRECTIONS OR COMMENTS MADE ON THE SHOP DRAWINGS DURING THIS REVIEW DO NOT RELIEVE CONTRACTOR FROM COMPLIANCE WITH REQUIREMENTS OF THE CONTRACT AND SUBJECT TO FURTHER LIMITATIONS AND REQUIREMENTS CONTAINED IN THE CONSTRUCTION CONTRACT DOCUMENTS.

CD CONSULTING ENGINEERS
 300 Commercial Street
 South Burlington, VT 05403
 802.888.5223

Job Number: 14-0116
 Reviewed by: A. GIRALDI
 Date: 4/7/17

DESIGN NOTES

CONCRETE: MINIMUM STRENGTH - 3000 PSI @ 28 DAYS.
 ALL REINFORCEMENT SHALL BE EPOXY COATED UNLESS NOTED OTHERWISE.
 ALL BARS SHALL BE EPOXY COATED UNLESS NOTED OTHERWISE.
 ALL BARS SHALL BE EPOXY COATED UNLESS NOTED OTHERWISE.
 ALL BARS SHALL BE EPOXY COATED UNLESS NOTED OTHERWISE.

BILL OF MATERIALS

NO.	QTY	UNIT	DESCRIPTION	REV.
1	1	1	REINFORCING STEEL - 10' SPACES @ 12" (MAX)	1
2	1	1	REINFORCING STEEL - 150' WITH SPAC	1

BAR CHART (REV. 01/17)

NO.	QTY	TYPE	SIZE	TYPE	LENGTH	REV.
1	1	1	10'	10'	10'	1
2	1	1	150'	150'	150'	1

Vermont Agency of Transportation
RECEIVED
 CK'D BY CLD OK'D BY WBP
 April 6, 2017
 RESUBMIT BY WPELLETIER n0 Approved DATE 04/07/2017

BAR WEIGHT TOTALS

NO.	QTY	WEIGHT
1	1	317.0 LBS.

CW-2
 (1) REQD.