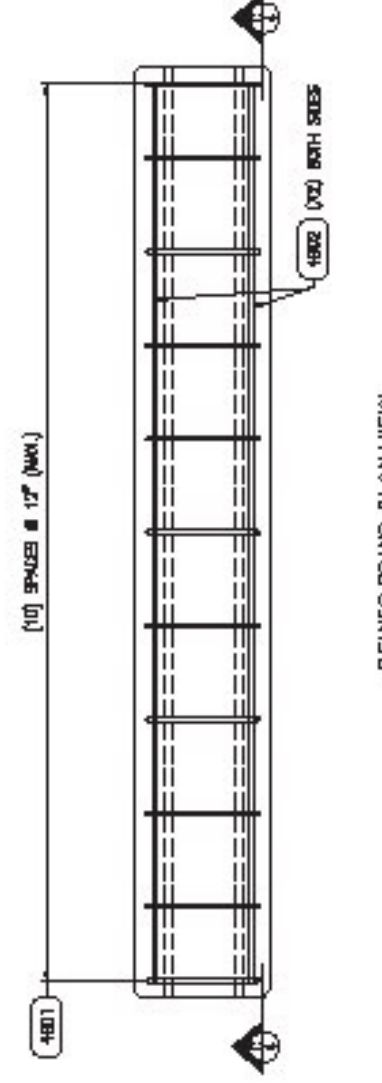
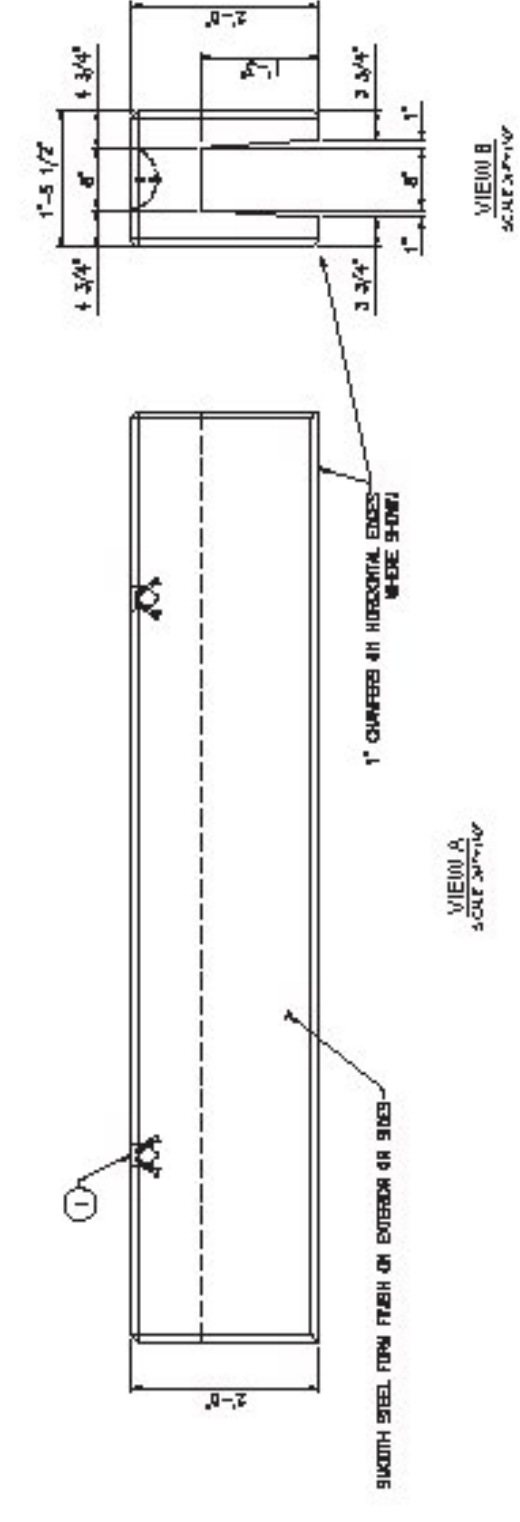


PLAN VIEW A  
SCALE: 1/8\"/>

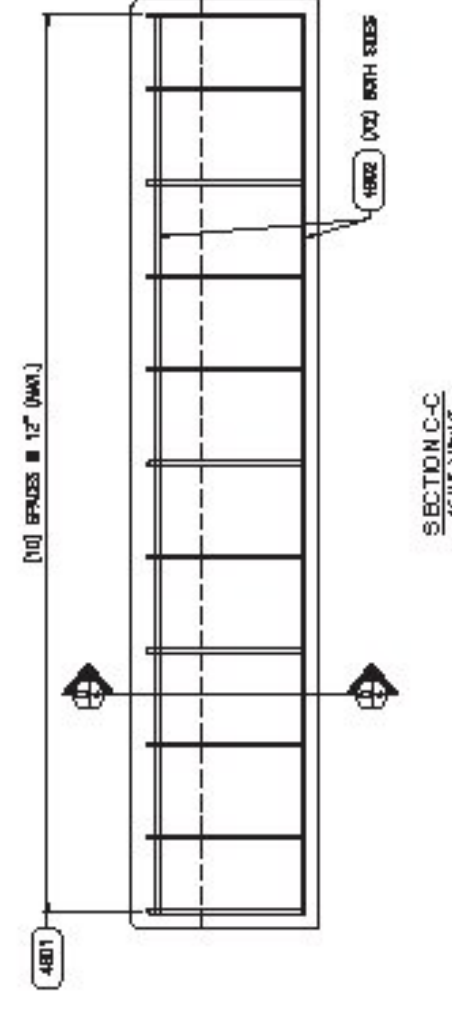


REINFORCING BAR PLAN VIEW  
SCALE: 1/8\"/>

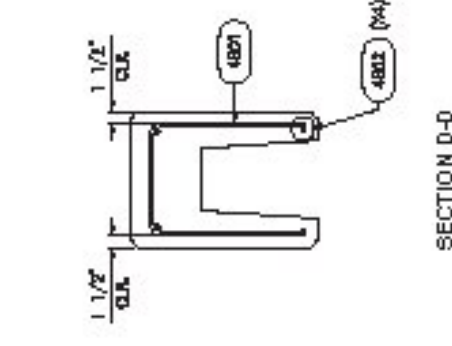
MAINTAIN 2\"/>



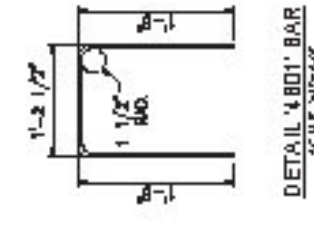
VIEW A  
SECTION A-A  
SCALE: 3/4\"/>



SECTION C-C  
SCALE: 3/4\"/>



SECTION D-D  
SCALE: 3/4\"/>



DETAIL A: BARS  
SCALE: 3/4\"/>

LEGEND  
SEE DRAWING

**SHOP DRAWING REVIEW**

REVIEWED AS REQUIRED BY THE CONSTRUCTION CONTRACT DOCUMENTS AND APPROVED, BUT ONLY FOR CONFORMANCE TO THE DESIGN CONCEPT OF THE WORK, AND SUBJECT TO FURTHER LIMITATIONS AND REQUIREMENTS CONTAINED IN THE CONSTRUCTION CONTRACT DOCUMENTS.

REJECTED  REVISE AND RESUBMIT  APPROVED AS NOTED

CORRECTIONS OR COMMENTS BASED ON THE SHOP DRAWINGS DURING THIS REVIEW DO NOT RELIEVE CONTRACTOR FROM COMPLIANCE WITH REQUIREMENTS OF THE DRAWINGS AND SPECIFICATIONS. THIS CHECK IS ONLY FOR REVIEW OF GENERAL CONFORMANCE WITH THE DESIGN CONCEPT OF THE PROJECT AND DOES NOT CONSTITUTE AN ENDORSEMENT OF THE CONTRACTOR'S WORK. THE CONTRACTOR IS RESPONSIBLE FOR CONFIRMING AND CORRECTING ALL QUANTITIES AND DIMENSIONS. SELECTING FABRICATION PROCESSES AND TECHNIQUES OF CONSTRUCTION, COORDINATING THEIR WORK, AND PERFORMING THEIR WORK IN A SAFE AND SATISFACTORY MANNER.

**CTD**  
 CTD Consulting Engineers  
 100 Main Street, 3rd Floor  
 Manchester, NH 03101  
 603-666-0022

Job Number: 14-0110  
 Reviewed by: A. GIRALDI  
 Date: 4/7/17

Vermont Agency of Transportation  
**RECEIVED**  
 CK'D BY CLD OK'D BY WBP  
 April 6, 2017  
 RESUBMIT nO Approved  
 BY VPELLETIER DATE 04/07/2017

| NO. | QTY/PC | TYPE | DESCRIPTION     | UNIT |
|-----|--------|------|-----------------|------|
| 1   | 1      | BAR  | REINFORCING BAR | PC   |
| 2   | 0.23   | PC   | REINFORCING BAR | PC   |

| NO. | QTY/PC | TYPE | DESCRIPTION     | UNIT |
|-----|--------|------|-----------------|------|
| 1   | 1      | BAR  | REINFORCING BAR | PC   |
| 2   | 0.23   | PC   | REINFORCING BAR | PC   |

**DESIGN NOTES**

CONCRETE: MINIMUM STRENGTH - 4000 PSI. ALL MIXES TO BE PERFORMED IN ACCORDANCE WITH THE VERMONT MIX DESIGN MANUAL. ALL MIXES TO BE PERFORMED IN ACCORDANCE WITH THE VERMONT MIX DESIGN MANUAL. ALL MIXES TO BE PERFORMED IN ACCORDANCE WITH THE VERMONT MIX DESIGN MANUAL.

REINFORCING BAR: ALL BARS TO BE PERFORMED IN ACCORDANCE WITH THE VERMONT MIX DESIGN MANUAL. ALL BARS TO BE PERFORMED IN ACCORDANCE WITH THE VERMONT MIX DESIGN MANUAL. ALL BARS TO BE PERFORMED IN ACCORDANCE WITH THE VERMONT MIX DESIGN MANUAL.

| BAR WEIGHT TOTALS |            |
|-------------------|------------|
| PC                | TOTAL LB.  |
| 1                 | 100        |
| 2                 | 200        |
| <b>TOTAL</b>      | <b>300</b> |

CW-1  
(28) REQD.