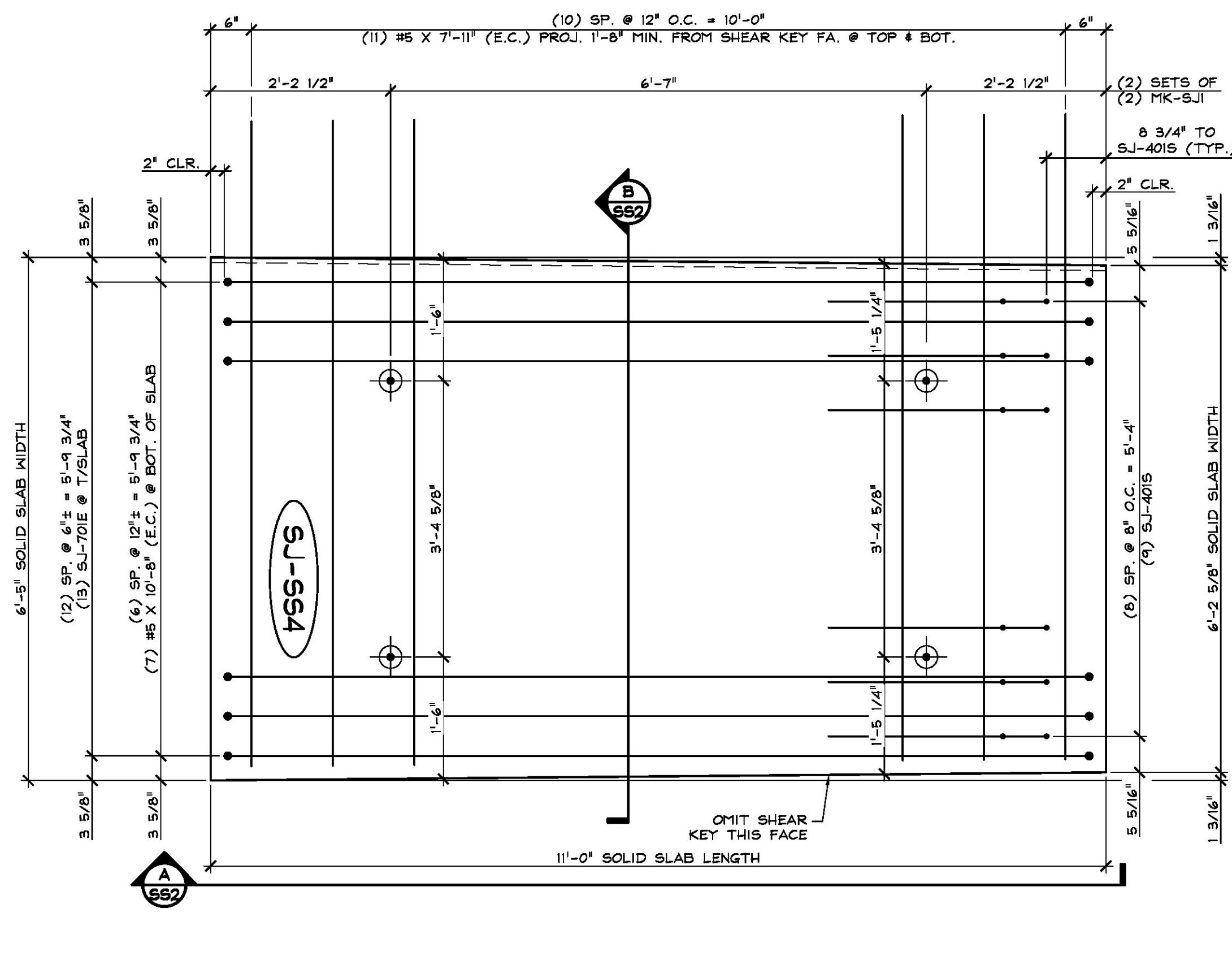
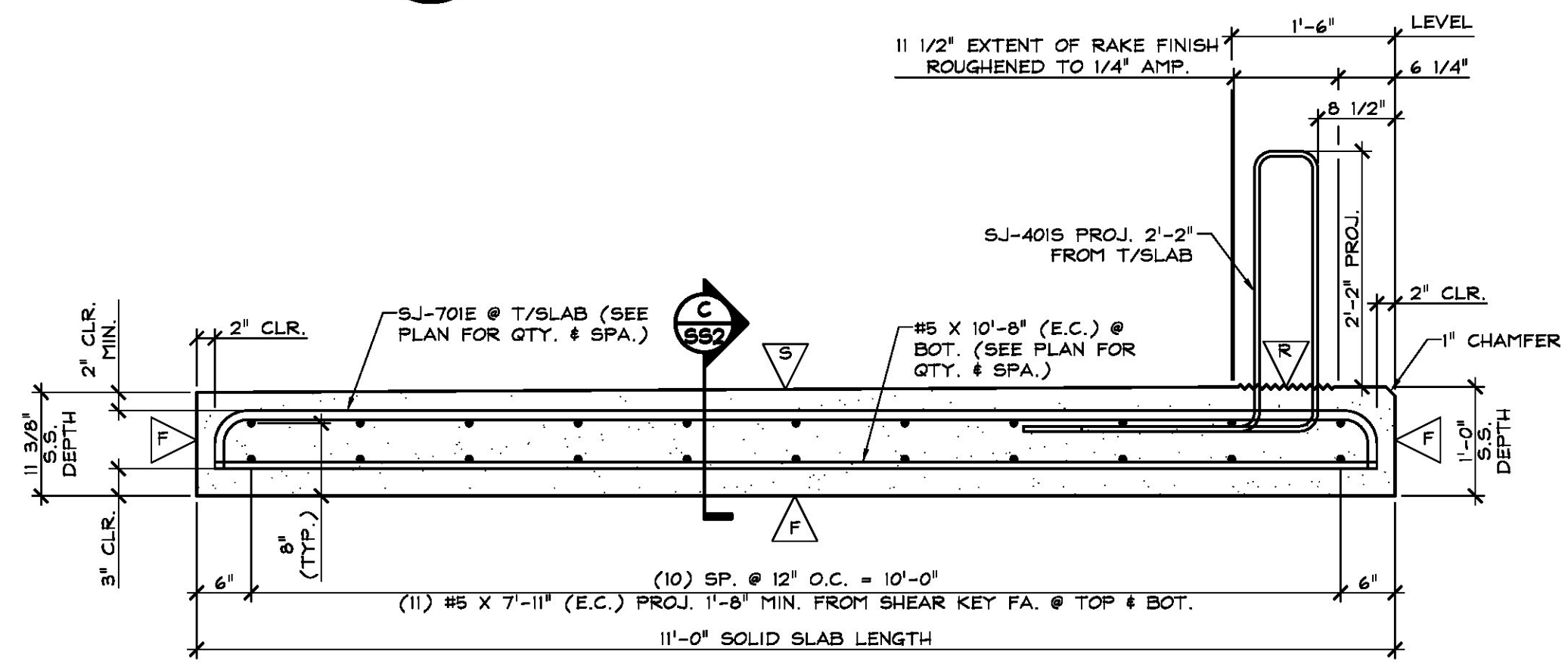


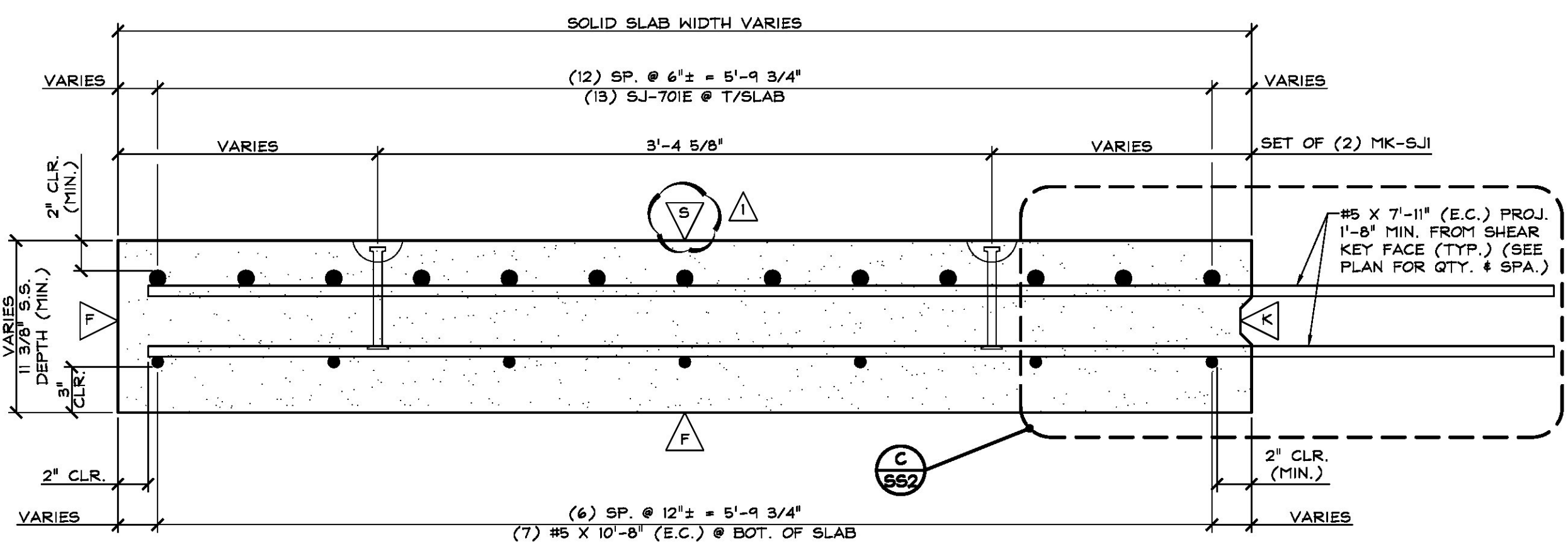
1 PLAN VIEW INFORM
SS2 3/4" = 1'-0"



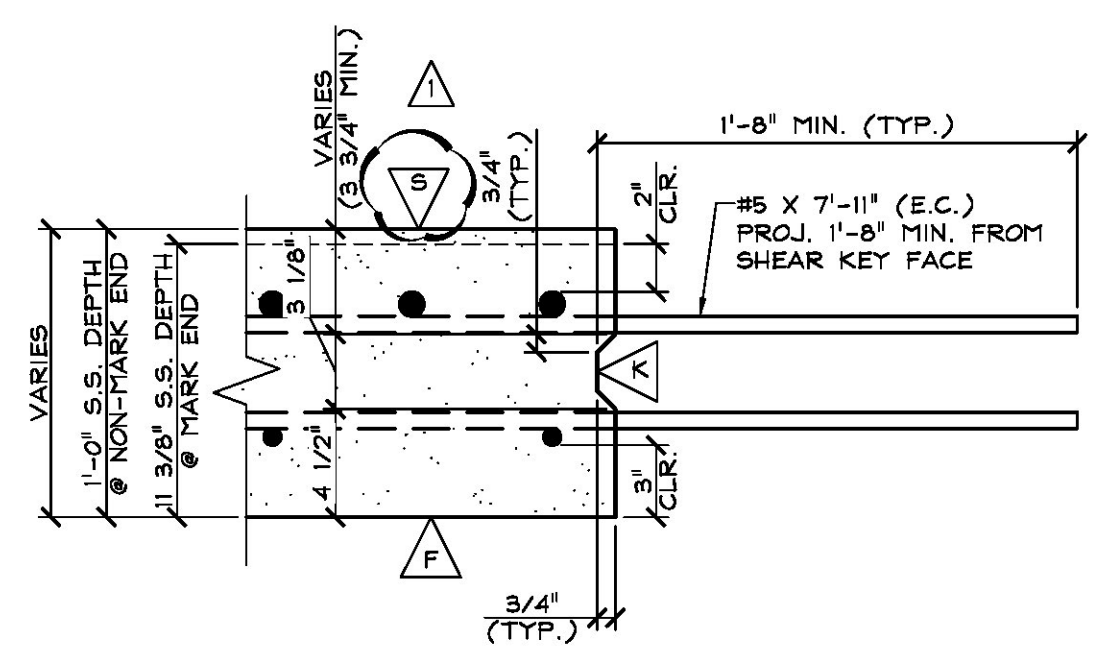
2 PLAN VIEW INFORM
SS2 3/4" = 1'-0"



A LONGITUDINAL SECTION
SS2 3/4" = 1'-0"



B TRANSVERSE SECTION
SS2 1 1/2" = 1'-0"



C SHEAR KEY SECTION
SS2 1 1/2" = 1'-0"

Vermont Agency of Transportation
RECEIVED
 CKD BY CLD OK'D BY VBP
 March 6, 2017
 RESUBMIT NO. Approved
 BY WPE/LETTER DATE 03/16/2017

SHOP DRAWING REVIEW

REVIEWED AS REQUIRED BY THE CONSTRUCTION CONTRACT DOCUMENTS AND APPROVED, BUT ONLY FOR CONFORMANCE TO THE DESIGN CONCEPT OF THE WORK, AND SUBJECT TO FURTHER LIMITATIONS AND REQUIREMENTS CONTAINED IN THE CONSTRUCTION CONTRACT DOCUMENTS.

REJECTED REVISE AND RESUBMIT APPROVED AS NOTED

CORRECTIONS OR COMMENTS MADE ON THE SHOP DRAWINGS DURING THIS REVIEW DO NOT RELIEVE CONTRACTOR FROM COMPLIANCE WITH REQUIREMENTS OF THE DRAWINGS AND SPECIFICATIONS. THIS CHECK IS ONLY FOR REVIEW OF GENERAL CONFORMANCE WITH THE DESIGN CONCEPT OF THE PROJECT AND GENERAL COMPLIANCE WITH THE INFORMATION GIVEN IN THE CONTRACT DOCUMENTS. THE CONTRACTOR IS RESPONSIBLE FOR CONFIRMING AND CORRELATING ALL QUANTITIES AND DIMENSIONS, SELECTING FABRICATION PROCESSES AND TECHNIQUES OF CONSTRUCTION, COORDINATING THEIR WORK WITH THAT OF ALL OTHER TRADES, AND PERFORMING THEIR WORK IN A SAFE AND SATISFACTORY MANNER.

<small>CLD Consulting Engineers 540 Commercial Street Manchester, NH 03101 603-688-8223</small>	<small>Job Number: 14E0116 Reviewed by: AEG Date: 3/16/17</small>
--	---

- △ DENOTES FORM FINISH
- ▽ DENOTES SMOOTH FLOAT FINISH
- ▽ DENOTES ROUGHENED FINISH (SEE GENERAL NOTE #10, SHEET 'F')
- △ DENOTES RAKE FINISH ROUGHENED TO 1/4" AMPLITUDE

SHOP NOTE:
 28-DAY STRENGTH = 5,000 PSI
 HANDLING STRENGTH = 3,000 PSI
 DESIGN MIX #445M5CC

MARK: SJ-SS3	QTY.: 1	WT.: 5.09 T	VOL.: 2.52 cy
MARK: SJ-SS4	QTY.: 1	WT.: 5.09 T	VOL.: 2.52 cy

MATERIAL LIST / SOLID SLAB				
ITEM	MARK	DESCRIPTION	QTY./SLAB	
			SS3	SS4
1	SJ-4015	#4 BENT BAR (STAINLESS STEEL)	9	9
2				
3		#5 X 7'-11" (EPOXY COATED)	22	22
4		#5 X 10'-8" (EPOXY COATED)	7	7
5				
6	SJ-701E	#7 BENT BAR (EPOXY COATED)	13	13
7				
8	MK-SJI	DAYTON 2T X 6 3/4" SWIFT LIFT (GALV.) (DOMESTIC)	4	4
9				
10				

3-6-17 REVISED AS NOTED

APPROVAL STAMP:

J.P. CARRARA & SONS INC. Precast & Prestress Manufacturer <small>2464 ONE STR., MIDDLEBURY, VERMONT 05753 Phone: (802)388-6361 Fax: (802)388-9010</small>	J.P. SICARD, INC. CONTRACTOR BARTON, VERMONT
STATE OF VERMONT AGENCY OF TRANSPORTATION COUNTY OF CALEDONIA	
TOWN OF ST. JOHNSBURY VT ROUTE 2B, URBAN MINOR ARTERIAL BRIDGE NO.: 6 PROJECT NO.: BF 7000(20)	
PRECAST SOLID SLAB DETAILS	

DATE: FEB. 6, 2017
 SCALE: NOTED
 CHKD: M.W. DFTM: A.S.
 JOB NO: 23507-017
 DWG. NO: **SS2**