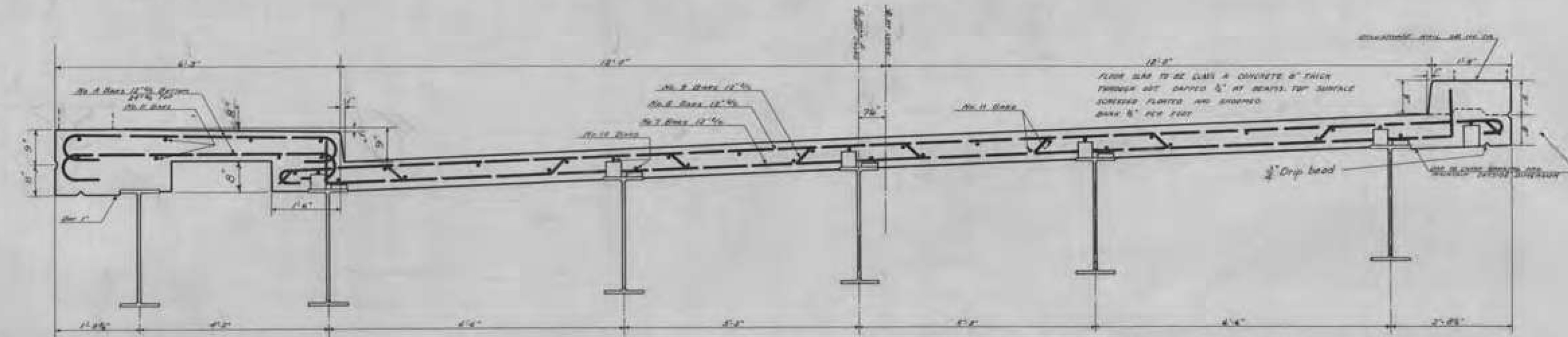
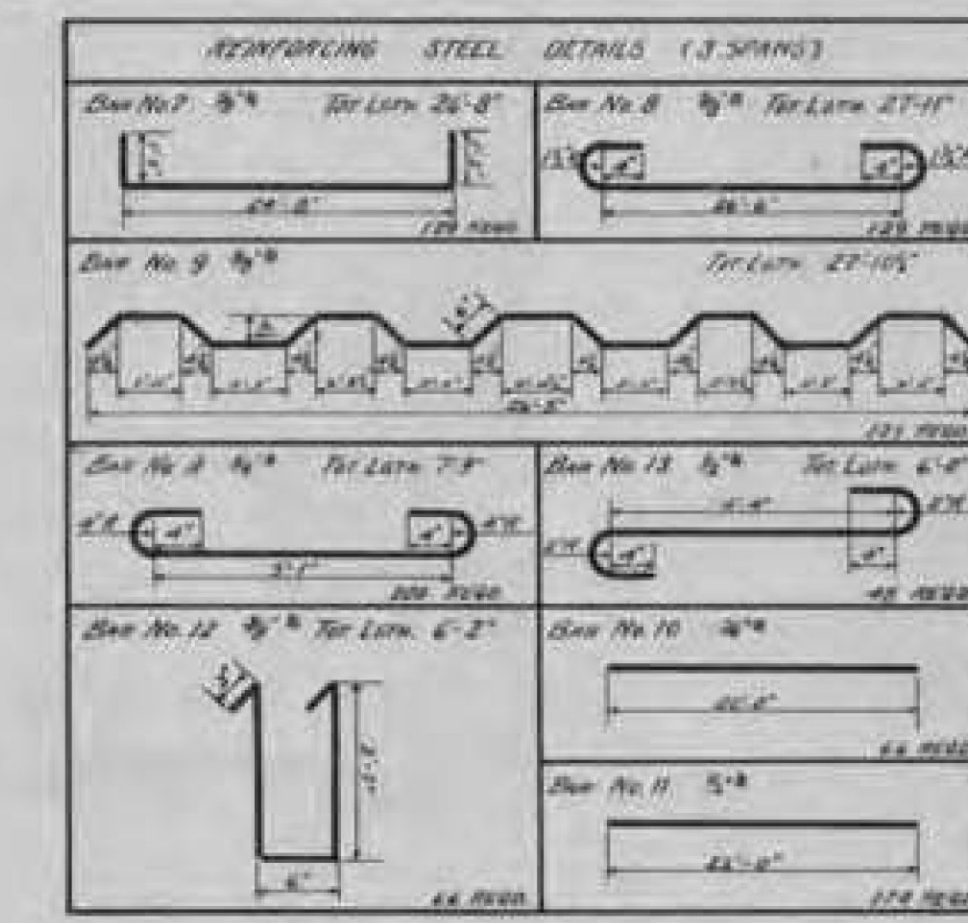


PLAN OF SUPERSTRUCTURE
SCALE 1/4" = 1'-0"

FOR DETAILS NOT SHOWN ON THIS SHEET SEE
STANDARD SPEC. S.I.D. 65, 70, 24, 25, 26,
DETAILS OF 40' CLEAR SPAN.



SECTION OF SUPERSTRUCTURE AT C. OF BRIDGE
SCALE 3/4" = 1'-0"



SPECIAL DETAILS SUPERSTRUCTURE
ST. JOHNSBURY OVERPASS
W.F.G.H. 118 E

ESTIMATED QUANTITIES

Concrete (Cubic Yds)	156.00	Designed by	H.G. Brewer
Reinforcing Steel (Lbs)	18,827.00	Drawn by	
Structural Steel (Lbs)	1,100.00	Traced by	Jan 24, 1922
		Checked by	C.P.S.
		Scale	No. 1/4" = 1'-0"
			Sheet 2 of 2 Sheets

ST. JOHNSBURY
BF 7000(20)
REVISION #2 - 12/05/2016
"FOR REFERENCE ONLY"