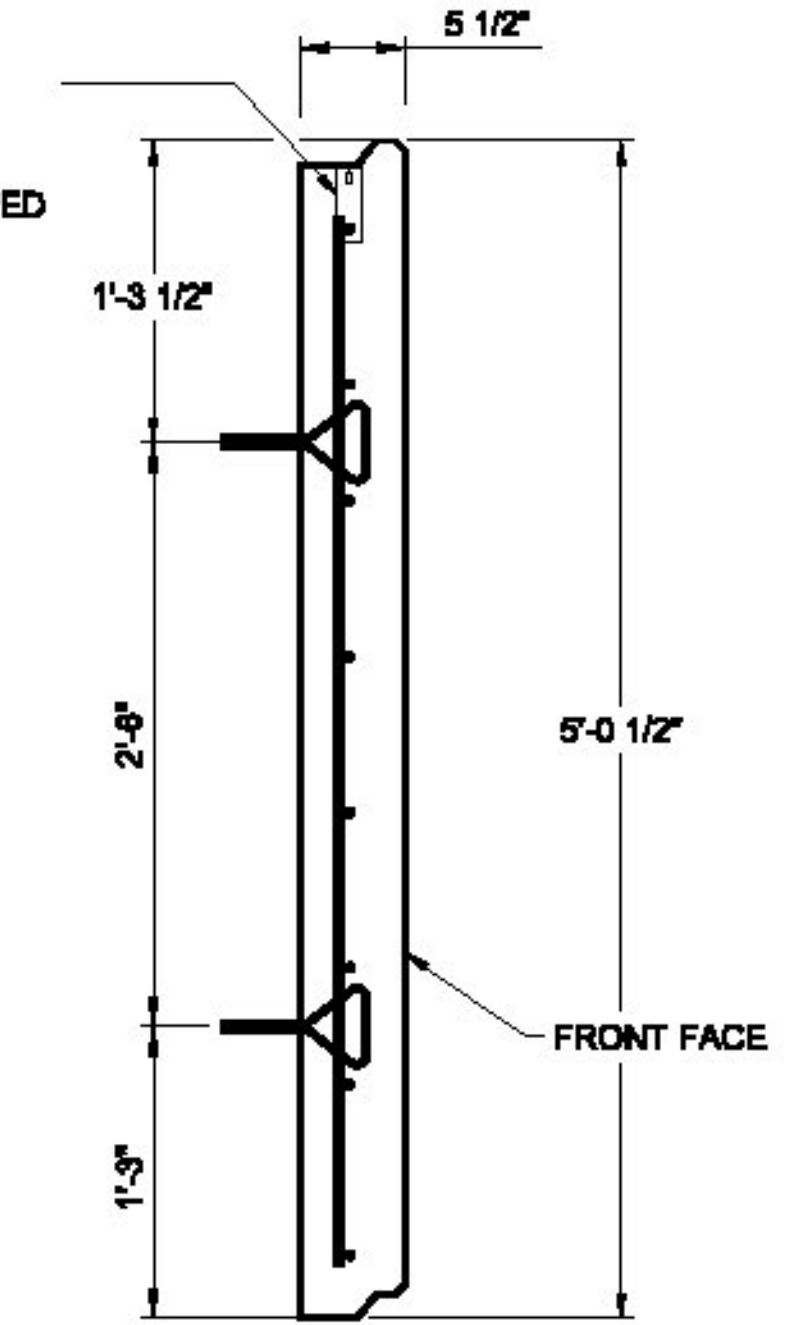


- NOTE:**
1. MINIMUM 2" COVER AT ALL EDGES.
 2. CENTER REBAR IN FORM AT BACK OF PANEL.
 3. TRIM AS REQUIRED.
 4. MINIMUM #4 BAR BOTH WAYS.
 5. TIE REBAR TOGETHER AT INTERSECTION POINTS.

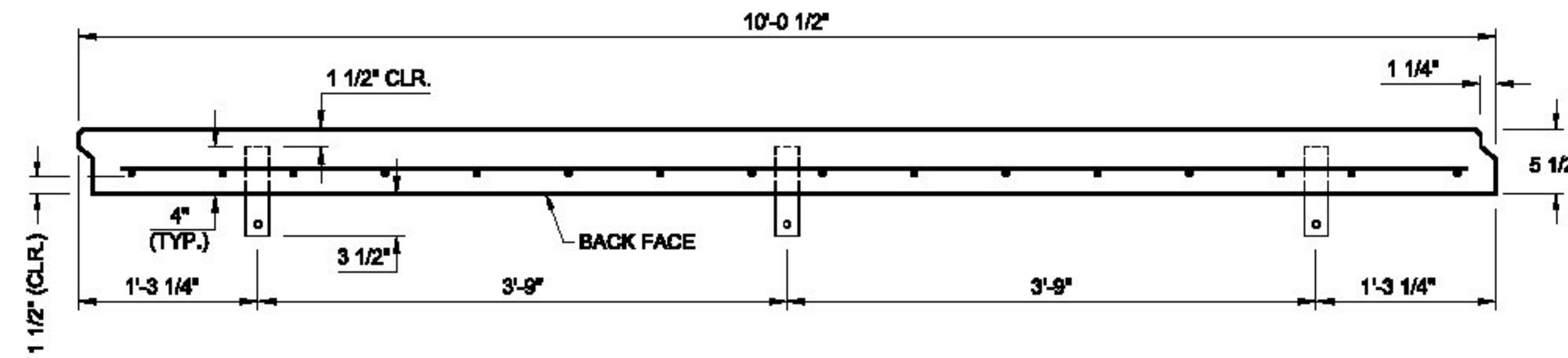
A
10 **OPTIONAL PANEL REINFORCEMENT**
STANDARD

PANEL LIFT ANCHOR SHALL BE DAYTON SUPERIOR (TWO TON) P-94 FLEET-LIFT T-ANCHOR (PRODUCT CODE FL110, HOT-DIPPED GALVANIZED) OR EQUIVALENT.



NOTE:
THICKNESS OF PANEL SHALL INCREASE TO ACCOMMODATE ANY REQUIRED ARCHITECTURAL FINISH.

C
10 **STANDARD RECTANGULAR PANEL**
SECTION VIEW



B
10 **ANCHOR PLACEMENT**
SECTION VIEW

REV	DESCRIPTION	BY	DATE
PROPRIETARY AND CONFIDENTIAL			
THIS DRAWING IS SOLE PROPERTY OF BIG R MANUFACTURING, LLC AND CONTAINS PROPRIETARY INFORMATION FOR USE WITH THIS PROJECT ONLY. ANY REPRODUCTION IN PART OR AS A WHOLE WITHOUT WRITTEN PERMISSION IS STRICTLY PROHIBITED.			

VISTAWALL SYSTEMS
P.O. Box 1290 • Greeley, Colorado 80632-1290
(970) 356-9600 • Fax:(970) 356-9621 • www.bigrbridge.com

PROPOSED IMPROVEMENT BRIDGE PROJECT
TOWN OF ST. JOHNSBURY COUNTY OF CALEDONIA
VT ROUTE 2B BRIDGE NO. 6

STANDARD COMPONENT DETAILS
SHEET 2 OF 8
SCP MSE RETAINING WALL
GRID-STRIP SOIL REINFORCING

THE DESIGN CONTAINED HEREIN IS BASED ON INFORMATION SUPPLIED BY OTHERS. BIG R BRIDGE IS CERTIFYING INTERNAL STABILITY OF THE STRUCTURE ONLY. EXTERNAL AND GLOBAL STABILITY REQUIREMENTS ARE THE RESPONSIBILITY OF OTHERS

REFERENCE DRAWINGS
NOT FOR CONSTRUCTION

VW15-00388
DESIGNED BY CDA
DRAWN BY ARO
CHECKED BY CDA
SHEET NO. 10 OF 16