

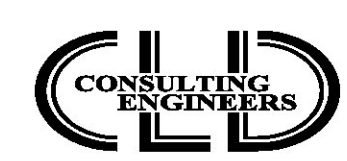
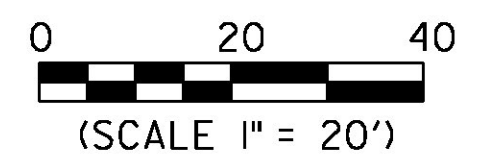
SOIL INFORMATION:
SALMON-ADAMANT COMPLEX
VERY ROCKY, 15%-25% SLOPES
K = 0.64, HIGHLY ERODIBLE
HYDROLOGIC SOIL GROUP: B

SOIL INFORMATION:
SALMON-ADAMANT COMPLEX
VERY ROCKY, 25%-50% SLOPES
K = 0.64, HIGHLY ERODIBLE
HYDROLOGIC SOIL GROUP: B

SOIL INFORMATION:
SALMON-ADAMANT COMPLEX
VERY ROCKY, 15%-25% SLOPES
K = 0.64, HIGHLY ERODIBLE
HYDROLOGIC SOIL GROUP: B

SOIL INFORMATION:
SALMON-ADAMANT COMPLEX
VERY ROCKY, 25%-50% SLOPES
K = 0.64, HIGHLY ERODIBLE
HYDROLOGIC SOIL GROUP: B

BENCH MARK
CHISELED SQUARE
ON BOUNDARY MARKER
ELEV= 703.27



PROJECT NAME:	ST. JOHNSBURY	PLOT DATE:	10/26/2016
PROJECT NUMBER:	BF 7000(20)	DRAWN BY:	W.GORDON
FILE NAME:	86e048/z86e048bdreroex.dgn	CHECKED BY:	P.SHEDD
DESIGNED BY:	M.HALEY	EPSC EXISTING PLAN SHEET	SHEET 63 OF 70

CLD 14-016 MODEL: L01

