

- ① STA. 26+69.7 LT MAIN ST. / 501+33.3 LT UNIV. : 2-6"x90" WELD STEEL ELLS--2'0" VERTICAL OFFSET HEADED UP GOING EAST--9/24/70. 5' DEEP TO 3'0" DEEP.
- ② STA. 27+04.4 LT MAIN ST. / 501+28.9 RT UNIV. : 6"x6"x6" WELD STEEL TEE. 4'4" WEST OF TEE--6" LUB. PLUG VALVE. 1'4" SOUTH OF TEE--6" LUB. PLUG VALVE. 9/24/70.

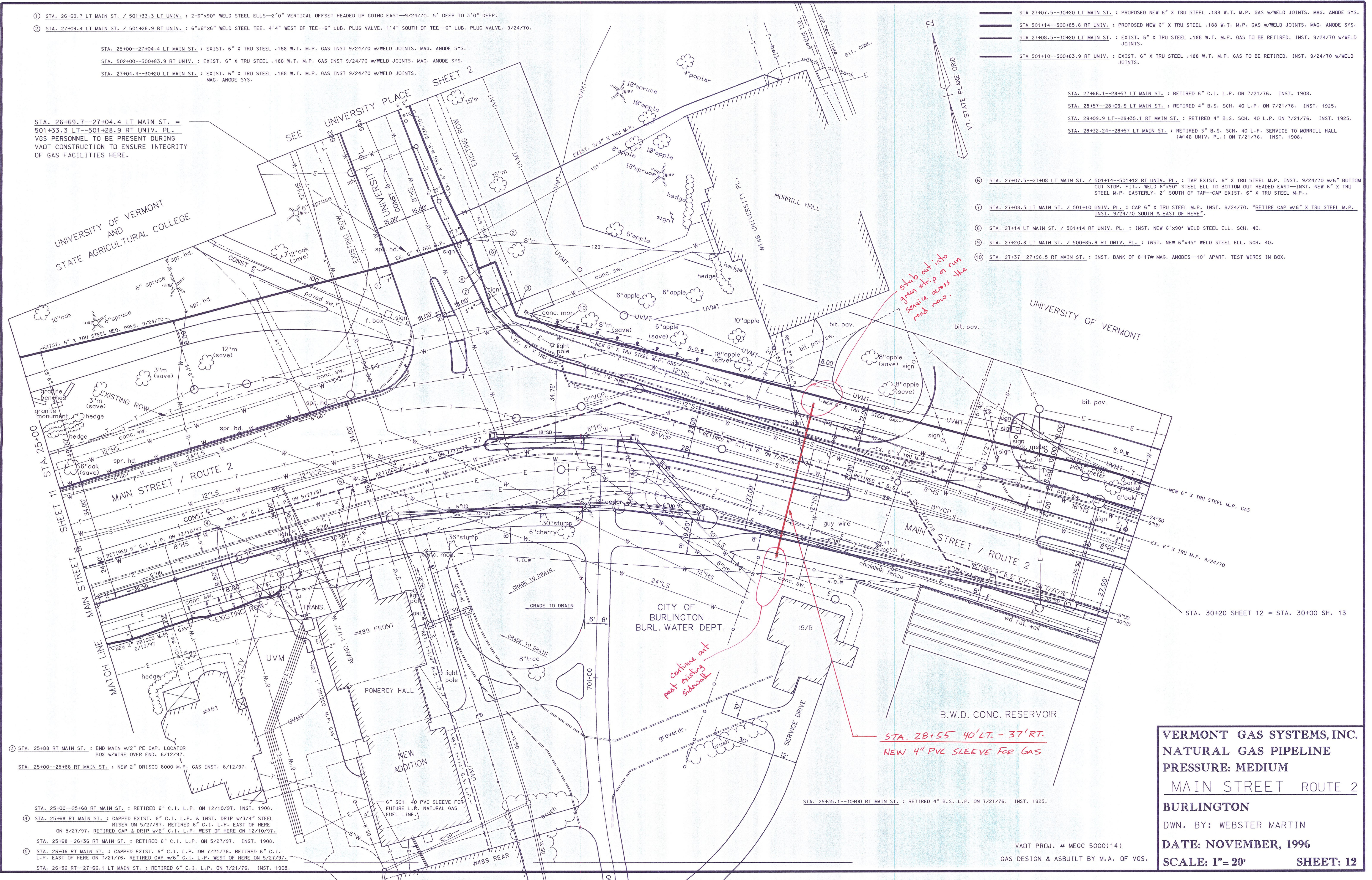
STA. 25+00--27+04.4 LT MAIN ST. : EXIST. 6" X TRU STEEL .188 W.T. M.P. GAS INST 9/24/70 W/WELD JOINTS. MAG. ANODE SYS.
 STA. 502+00--500+83.9 RT UNIV. : EXIST. 6" X TRU STEEL .188 W.T. M.P. GAS INST 9/24/70 W/WELD JOINTS. MAG. ANODE SYS.
 STA. 27+04.4--30+20 LT MAIN ST. : EXIST. 6" X TRU STEEL .188 W.T. M.P. GAS INST 9/24/70 W/WELD JOINTS. MAG. ANODE SYS.

STA. 26+69.7--27+04.4 LT MAIN ST. = 501+33.3 LT--501+28.9 RT UNIV. PL. VGS PERSONNEL TO BE PRESENT DURING VAOT CONSTRUCTION TO ENSURE INTEGRITY OF GAS FACILITIES HERE.

- STA 27+07.5--30+20 LT MAIN ST. : PROPOSED NEW 6" X TRU STEEL .188 W.T. M.P. GAS W/WELD JOINTS. MAG. ANODE SYS.
- STA 501+14--500+85.8 RT UNIV. : PROPOSED NEW 6" X TRU STEEL .188 W.T. M.P. GAS W/WELD JOINTS. MAG. ANODE SYS.
- STA 27+08.5--30+20 LT MAIN ST. : EXIST. 6" X TRU STEEL .188 W.T. M.P. GAS TO BE RETIRED. INST. 9/24/70 W/WELD JOINTS.
- STA 501+10--500+83.9 RT UNIV. : EXIST. 6" X TRU STEEL .188 W.T. M.P. GAS TO BE RETIRED. INST. 9/24/70 W/WELD JOINTS.

- STA. 27+66.1--28+57 LT MAIN ST. : RETIRED 6" C.I. L.P. ON 7/21/76. INST. 1908.
- STA. 28+57--28+09.9 LT MAIN ST. : RETIRED 4" B.S. SCH. 40 L.P. ON 7/21/76. INST. 1925.
- STA. 29+09.9 LT--29+35.1 RT MAIN ST. : RETIRED 4" B.S. SCH. 40 L.P. ON 7/21/76. INST. 1925.
- STA. 28+32.24--28+57 LT MAIN ST. : RETIRED 3" B.S. SCH. 40 L.P. SERVICE TO MORRILL HALL (#146 UNIV. PL.) ON 7/21/76. INST. 1908.

- ⑥ STA. 27+07.5--27+08 LT MAIN ST. / 501+14--501+12 RT UNIV. PL. : TAP EXIST. 6" X TRU STEEL M.P. INST. 9/24/70 W/6" BOTTOM OUT STOP. FIT. WELD 6"x90" STEEL ELL TO BOTTOM OUT HEADED EAST--INST. NEW 6" X TRU STEEL M.P. EASTERLY. 2' SOUTH OF TAP--CAP EXIST. 6" X TRU STEEL M.P..
- ⑦ STA. 27+08.5 LT MAIN ST. / 501+10 UNIV. PL. : CAP 6" X TRU STEEL M.P. INST. 9/24/70. "RETIRED CAP W/6" X TRU STEEL M.P. INST. 9/24/70 SOUTH & EAST OF HERE".
- ⑧ STA. 27+14 LT MAIN ST. / 501+14 RT UNIV. PL. : INST. NEW 6"x90" WELD STEEL ELL. SCH. 40.
- ⑨ STA. 27+20.8 LT MAIN ST. / 500+85.8 RT UNIV. PL. : INST. NEW 6"x45" WELD STEEL ELL. SCH. 40.
- ⑩ STA. 27+37--27+96.5 RT MAIN ST. : INST. BANK OF 8-17# MAG. ANODES--10' APART. TEST WIRES IN BOX.



Stub out into green strip on run service across the road now.

Continue out past existing sidewalk.

STA. 28+55 40'LT. - 37'RT. NEW 4" PVC SLEEVE FOR GAS

VERMONT GAS SYSTEMS, INC.
NATURAL GAS PIPELINE
PRESSURE: MEDIUM
MAIN STREET ROUTE 2
BURLINGTON
 DWN. BY: WEBSTER MARTIN
DATE: NOVEMBER, 1996
SCALE: 1"=20' **SHEET: 12**

- ③ STA. 25+88 RT MAIN ST. : END MAIN W/2" PE CAP. LOCATOR BOX W/WIRE OVER END. 6/12/97.
- STA. 25+00--25+88 RT MAIN ST. : NEW 2" DRISCO 8000 M.P. GAS INST. 6/12/97.
- STA. 25+00--25+68 RT MAIN ST. : RETIRED 6" C.I. L.P. ON 12/10/97. INST. 1908.
- ④ STA. 25+68 RT MAIN ST. : CAPPED EXIST. 6" C.I. L.P. & INST. DRIP W/3/4" STEEL RISER ON 5/27/97. RETIRED 6" C.I. L.P. EAST OF HERE ON 5/27/97. RETIRED CAP & DRIP W/6" C.I. L.P. WEST OF HERE ON 12/10/97.
- STA. 25+68--26+36 RT MAIN ST. : RETIRED 6" C.I. L.P. ON 5/27/97. INST. 1908.
- ⑤ STA. 26+36 RT MAIN ST. : CAPPED EXIST. 6" C.I. L.P. ON 7/21/76. RETIRED 6" C.I. L.P. EAST OF HERE ON 7/21/76. RETIRED CAP W/6" C.I. L.P. WEST OF HERE ON 5/27/97.
- STA. 26+36 RT--27+66.1 LT MAIN ST. : RETIRED 6" C.I. L.P. ON 7/21/76. INST. 1908.

STA. 29+35.1--30+00 RT MAIN ST. : RETIRED 4" B.S. L.P. ON 7/21/76. INST. 1925.

VAOT PROJ. # MEGC 5000(14)
 GAS DESIGN & ASBUILT BY M.A. OF VGS.